



MOPHATO

3

BUKA YA
MOITHUTI

Platinum

Dipalo

S Bota • G Agherdien • N Johnson • G Van der westhuizen

Platinum Dipalo Mophato wa 3 Buka ya Morutwana

Maskew Miller Learning
10 Freedom Way, Milnerton, Cape Town, 7441

© Maskew Miller Learning (Pty) Ltd 2022

Ditokelo tsotlhe di sireleditswe. Ga go karolo ya kgatiso e, e e ka boelediawang, ya bolokwa mo mofuteng o o ka tlhagiswang gape ka ona, kgotsa ya gaswa mo sebopegong sengwe le sengwe kgotsa ka mokgwa o o rileng (eleketeroniki, ka motšhine, ka kgatiso kgotsa ka mokgwa o mongwe o o sa dumeletsegeng) ntle le gore go bonwe tumelano e e kwadilweng fa fatshe ya mong wa ditshiamelo tse di sireleditsweng tsa bokwadi pele.

Fa o batla go rebolelwa tetla ya go ka gatisa lekgetlo le lengwe gape kgotsa go dirisa karolo nngwe le nngwe ya buka eno, o kopiwa gore o ikgolaganye le Setlhophu se se reboletanang ka Ditshwanelo le Tetla mo go 021 532 6000 kgotsa ka go romela imeile mo go rightsgranting@mml.co.za.

Kgatiso ya 1 ka 2025

ISBN 978-1-779-83430-0
ePDF 978-1-834-98689-0

Mophasalatsi Thandi Kgosana
Morulaganyimogolo Khanga Slinda
E rulagantswe ke Christine de Nobrega
Mothalo wa bokwante ka MML Visual Design
Botaki jwa bokwante ka MML Visual Design
Mothalo wa buka ka MML Visual Design
Botaki ka MML
Thulaganyo ya mokwalo ka STRAIVE le Lizette Watkiss
E gatisitswe ke

Ditebogo

Bakwadi le mophasalatsi ba lebogela tshebediso ya ditshwantsho go tswa go:

p46, zizou7; p54a, PixaHub/Shutterstock; p54b, robuart; p54c, doom.ko; p54d, John Kasawa; p120, Morphart Creation; p157, Evikka/Shutterstock; p166a, szefei; p166b, Art789; p169a, Ahmad Muflih Syarifuddin; p169b, Ahmad Muflih Syarifuddin; p169c, szefei; p170a, i-am-helen; p170b, i-am-helen; p170c, Ahmad Muflih Syarifuddin; p170d, Ahmad Muflih Syarifuddin; p178a, Mark_Rimsky; p178b, Mark_Rimsky; p178c, Mark_Rimsky; p179a, Mark_Rimsky; p179b, Mark_Rimsky; p202, Morphart Creation; p216, zizou7; p227, Morphart Creation; p236, Viktor I; p238a, zizou7; p241, hxdbzxy

O a amogelwa mo maitemogelong a rona a thuto

Morutwana yo o rategang,

Re a go amogela mo bukeng eno ya thuto e e kgatlhang thata! O tlike go kopana le batsayakarolo ba ba gakgamatsang; fela jaaka fa motsayakarolo mongwe le mongwe a kgethegile ka tsela ya gagwe, le wena o kgethegile fela jalo!

Mo bukeng ya gago ya thuto o tlike go bona dilo tse di latelang, tse di tla go thusang fa o ntse o ithuta le go ribolola dilo tse dintsi thata.

- **A re simolole:** Setlhogo sengwe le sengwe se simolola ka tshedimosetso e e bothokwa ya se o tla bong o ithuta ka sone.
- **Nako ya go utulola:** Metshameko e e monate e e tla go kgothaletsang go utulola dikgopolo tse dintšhwa go ithuta dilo tse dintle le go rarabolola marangrang.
- **Mafoko a mantšhwa:** Ithute mafoko a mantšhwa a a tla go thusang go godisa letlotlo la gago la mafoko.
- **A re bone:** Kwa bokhutlong jwa setlhogo sengwe le sengwe, dira ditiro tseno gore o kgone go nna motlotlo ka se o ithutileng sone!
- **Tlhatlhobo e e tlhomameng:** Seno se tla tlhatlhoba gore o tthagantse go le kana kang dilo tsothe tse di ntseng di rutiwa mo kgweditharong eo.

Buka eno ya thuto e tla go kgothaletsa go dira o le mongwe, le ka ditlhopho. Lo tla opela, lo bine lo bo lo ithute mmogo. Tlhomamisa gore o baakanyetsa phaposiborutelo nngwe le nngwe o bo o botse morutabana dipotso di le dintsi ka mo o ka kgonang ka gone.

Ipaakanyetse go ithuta, go tshameka le go tlhama le ditsala tsa gago.

Itumelele go ithuta.

Diteng

Kgweditsharo 1

Lefelo la diteng: Setlhogo		Ditsebe	Tsebe mo bukeng ya mosebetsi ya DBE
Simolola ka dipalo!		1	
	Simolola dipalo	2	
	A re tlhole kitso ya gago	3	
	A re simolole loeto la rona la go bala!	4	B I: 6
	Go bala kwa pele le kwa morago ka 2, 3 le 4	7	B I: 7-8
	Monate wa dipalo	10	B I: 101, 105, 113
	Go tshameka ka diopereshene tse di farologaneng	12	B I: 37, 42-49, 119-120, 124, 138
	Dipalo tsa tlhogo ka nnete e e kgatlhisang	19	B I: 12, 120
	Go bala didirisiwa ka tsela e e ikanyegang	24	B I: 4, 50, 52, 56
	Go bala le go peleta	30	B I: 6, 38, 39
	Go tshwantshanya dipalo	32	B I: 37
	Go arognaya dipalo tse dikgolo	34	B I: 10, 38-41
	Motshameko wa patlo: Lebelo la dipalo	37	B I: 42-49
	Go fenyha ka dipalo	38	B I: 68-69
	Bagaka ba dipalo	43	B I: 68-69
	Go bolela nako	48	B I: 26-27, 74-75, 122
	Go dira ka dikhalentara	50	B I: 75
	Dipaterone tse di kgatlhisang le dipopego	51	B I: 21
	Go batla dipopego mo tikologong ya nrona	54	B I: 22-23
	Go lekanya sentle	56	B I: 28-29
	Batlhotlhomisi ba tshedimosetso	59	
	Bagaka ba dipalo: Ikgantshe ka bokgoni jwa gago!	63	



Kgweditharo 2

Lefelo la Diteng: Sethogo	Ditsebe	Tsebe mo bukeng ya mosebetsi ya DBE
Tekatekanyo ya bokgoni jwa rona jwa dipalo!	68	
Maselamose a dipalophatlho	69	
Go bala ka go agela mo motshamekong wa dipalo	72	B I: 10-11, 38-39
Go ribolola dipaterone ka dikatiso	73	B I: 5, 104
Ribolola le go senole sephira sa go bala ka dikatiso	76	B I: 5, 65, 91
Tatelano e e tlhatlhogang le e e fologang	79	B I: 77, 92, 97
Go feta kgotsa kwa tlase	82	B I: 4, 37, 93
Kamano fa gare ga + le -	83	B I: 12, 87-88, 98, 102
Go nale bokgoni jwa dipalo tsa tlhogo!	87	B I: 117-119, 121
Go batla le go atolosa dipaterone tsa dipalo	91	B I: 16-17
Go ribolola diphiri tsa dipalo	93	B I: 38-41
Go dira ka dipalo tse dikgolo	95	B I: 16-17
Go tlhaloganya ditsela tsa go balela	96	B I: 42-48
Go tlhaloganya kabelano le kago ya ditlhopho	98	B I: 68-71
Madi a dikolosa lefatshe: Go tlhaloganya madi	101	B I: 18-19, 126
Bapisa: Go dira dikgolagano ka dipalophatlho	102	B I: 128-132
Dipalophatlho – Karolo ya palotlalo	104	B I: 128-132
Go fopholetsa le go lekanya boleele ka didirisiwa tse di kgatthisang	109	B I: 28-29, 94-95
Go dira dipaterone tse dintle ka dipopego	110	B I: 21
Go dira dipopego tsa 2D	113	B I: 25
Dipopo mo betaking	114	B I: 22-23
Go kokoanya le go sekaseka tshedimosetso	115	B I: 34-35
Patlisiso ya diruiwa tse di botsalano	117	B I: 34-35, 51
Bagaka ba dipalo: Supa bokgoni jwa gago!	120	



Kgweditsharo 3

Lefelo la Diteng: Setlhogo	Ditsebe	Tsebe mo bukeng ya mosebetsi ya DBE
Go batlisisa ka naga ya dipalo	128	
Go batlisisa ditsela tsa dipalo!	131	B 2: 25
Go bala ka go dikatiso (2, 3 le 4)	134	B 2: 34, 38, 40-42, 46
A re batleng ditsela tse di fi tlhegileng le Topo!	139	B 2: 34, 38, 40-42, 46
Botsipa ba dipalo tsa tlogo	141	B 2: 25, 28, 34, 38, 40, 42, 46, 50
Matshwao a dipalo le maina a dipalo	143	B 2: 5, 11, 15, 73, 77, 85
Go rulaganya dipalo mo nageng ya dipalo	145	B 2: 25, 31, 36, 37
Go aga le go agolola dipalo	147	B 2: 5, 11, 15, 73, 77
Go agolola dipalo le go tlhologanya dipalo	148	B 2: 5, 11, 15, 73, 77
Go menaganya le go ripa dipalo gare	150	B 2: 94
Go tlhakanya ka poeletso mo go isang kwa katisong	154	B 2: 34, 38, 40-42
Nako ya go batlisisa	156	B 2: 28, 34, 40, 43
Go lemoga Karoganyo	161	B 2: 28, 34, 40, 43
Go rarabolola ditharaano tsa madi	162	B 2: 62-64, 90-99
Go dira pelo	163	B 2: 35, 62
Nako le sebaka mo nageng	164	B 2: 32-33, 88, 97
Dipopego tsa tlholego	175	B 2: 6-7
Go batlisisa ka fa re bonang dilo ka teng	178	B 1: 23-23, 134-135
Re rutegile go le kae?	181	



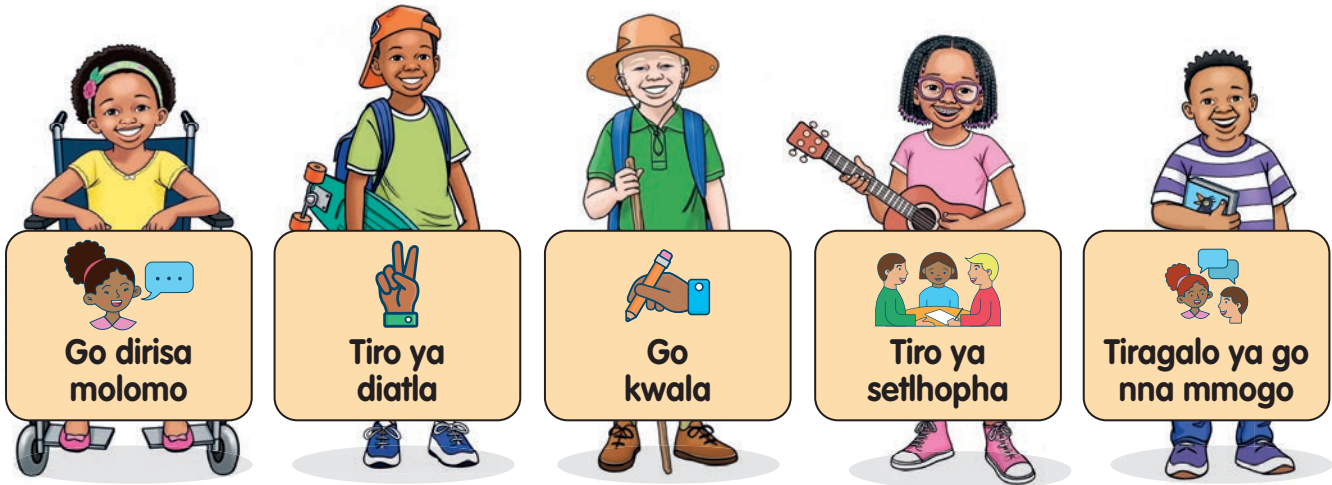
a

Kgweditharo 4

Lefelo la Diteng: Setlhogo	Ditsebe	Tsebe mo bukeng ya mosebetsi ya DBE
Go ipaakanyetsa ngwaga e e tlang	184	
Go Batlisisa Dipalo le Dipaterone tsa go bala	187	B 1: 7, 8, 21, 56, 58, 70
Go balela kwa pele le kwa morago ka 20, 25, 50 le 100	191	B 1: 124 B 2: 38, 42, 50, 65, 128
Thulaganyo ya go ya godimo le tlase	193	
Go nna mogaka wa dipalo	194	B 1: 62-67
Maitemogelo a dipalo tsa naga	195	
Go arola ga naga	197	B 2: 20
Go nna le bokgoni jwa go bala dilo ka tsela e e Ikanyegang	198	
Go bala le go peleta	199	B 2: 5, 11, 15, 73, 77, 85
Fetsa ka maatla ka go rulaganya le go tshwantshanya	200	B 1: 11, 97, 101, 102
Go tlhaloganya bolengkemedi le go arola	202	B 1: 80-82
O amogetswe mo patlisisong e kgolo ya dipalo!	204	B 1: 10, 112 B 2: 23, 73, 77
Tlhakanya le go ntsha o dirisa melapalo	207	B 1: 55, 62, 65, 70
Dipalo mo tikologong ya sekolo	208	B 2: 28, 34, 39, 40
Kgang ya madi	212	B 1: 19, 109, 127 B 2: 62-64, 90-91
Go ntsha dipalo tsa palo tse tharo	213	B 2: 21, 23
Nako ya kgang: Go reka monate	215	B 2: 21, 23
Dipalophatlho: Dikarolo tsa palotlalo	216	B 2: 120-122
Dipalophatlho le didiriswa	219	B 2: 54-58
Go dirisa dipalophatlho mo botshelong jwa letsatsi le letsatsi	221	B 2: 120-122
Nako le sebaka	222	B 1: 127
Puo ya molomo le pono	224	B 1: 134-135
Go ipaakanyetsa Mophato wa 4	227	
Lenaneo la nako ya go tshameka la moithuti mongwe le mongwe ka beke	231	



Tsela ya go dirisa buka eno



Mafoko a mantšhwa

dirisa mafoko a a sa raraanang e e bogale e bile e phepa go nonotsha pono kgopolo nngwe le nngwe.

Tiragalo ya bobedi

Re dira le tsala e e mo tseleng bothata jo bo khutshwane kgotsa tiro.

Go nwa ka molomo

Motlotlo wa mo phaposiborutelong kgotsa ka molomo kgwetlho.

Tlhatlhubo le Tlhatlhubo ya kwa bokhutlong jwa paka

Teko eno e e tlang ka bokhutlo jwa nngwe le nngwe lobaka.

Dibopego bakeng sa mediro

Tiro ya sethophha

Tiro e e mosola go dira ka diatla.

Tiro e e mosola
Go dira ka diatla tiro

Go kwala

Setshwantsho se re se dirisang go kwala mo tirong ya rona ya dibuka.

Ipaakanyetse go ithuta, go tshameka le go tlhama le ditsala tsa gago. Itumelele go ithuta!

Kgweditsharo 1: Simolola ka dipalo!

150 170 200
192 132 180
162 140

Dithogo tse di akareditsweng

- Go bala
- Dipalo tsa tlhogo
- Bala didirisiwa ka tsela e e ikanyegang
- Matshwao a dipalo le maina a dipalo
- Tlhalosa, bapisa le go rulaganya dipalo
- Bolengkemedi
- Rarabolola ditharaano mo tirisong
- Go balela (go se mo tirisong)
- Dipalophatlho
- Tekanyo
- Dipaterone, tiriso le alejebora
- Boalo le popego
- Go dira ka tshedimosetso ya dipalo

Lefatshe le go se nang go bala mo go lona

Akanya lefatshe le go se nang yo o itseng go bala mo go lona. Sengwe le sengwe se ka nna boima thata.

Kwa sekolong, go rulaganya baithuti ka wena mo moleng go ka tliša ketsaetsego. O ka se itse gore a o wa ntlha, wa bobedi kgotsa wa boraro.

Kwa mmarakeng, go reka dijo go ne go tla nna thata. O ne o ka se itse gore a o na le madi a a lekaneng kgotsa gore o ka kopa diapole di le kae.

Kwa gae, o ne o ka se itse gore ke nako mang. O ne o tla sokola go baka kuku o sa itse gore o dire metswako ka selekanyo se se kae. Metshameko e ne e ka se kgonege. O ka tshameka jang patlaka kgotsa wa boloka maduo o sa bale?



A re thole kitso ya gago

1. Go balela pele le go balela morago

Tlatsa dipalo tse di tlhaelang ka go balela kwa pele kgotsa kwa morago.

- a. 17; 18; 19; ___; ___; ___
- b. 95; 96; 97; ___; ___; ___
- c. 54; 53; 52; ___; ___; ___
- d. 180; 179; 178; ___; ___; ___
- e. ___; ___; ___; 149; 150; 151

2. Go lemoga dipalo le go kwala matshwao

a. Bapisa lefoko lengwe le lengwe la palo le letshwao la lona.

Masometlhano-tharo	92
Masomesupa-robodi	53
Masomerobongwe-pedi	78

b. Kwala letshwao la palo la lefoko a - **lesome le botlano**.

3. Go tlhakanya le go ntsha go fitlha go 20

- a. O na le dinamune di le 12 mme o tsaya tse dingwe di le 5. O na le dinamune di le kae ka kakaretso?
- b. $15 - 6$ ke bokae?
- c. Tom o ne a na le dimonamone di le 18. O naya tsala ya gagwe 7. O setse ka dimonamone di le kae?

4. Dithulagano le ditharabololo tsa tharaano

- a. Kgwedi ya boraro ya ngwaga ke efe?
- b. Kwala malatsi a beke ka tatelano, go simolola ka Mosupologo.
- c. Fa e le gore gompiano ke Mosupologo, e tla bo e le letsatsi lefe mo nakong ya malatsi a le mane?
- d. Lerang o na le R15. O reka setshamekisi ka R9. O setse ka madi a le kae?
- e. Bese e na le manno a le 20. Fa go tserwe ditulo di le 7, go setse ditulo di le kae?

A re simolole loeto la rona la go bala!

Metshameko ya naga



Tshameka motshameko ono wa go bala le tsala ya gago. O tla ikatisa go phopholetsa, go aga ditlhopha le go bala dibadi.

Leka bokgoni jwa gago mme o bapise dipholo tsa gago go bona gore diphopholetso tsa gago di nepagetse go le kana kang.

O tla tlhoka:

- Kgamele e e nang le dibadi di ka nna 100 (dikonopo, dibaga, matlapa, dimabole).
- Pampiri le pensele.

Se o se dirang:

1. **Refosanang:** Mongwe le mongwe o tsaya diatla tse pedi tse di tletseng dibadi mme a di kopanye mo sethopheng se le sengwe mo tafoleng.
2. **Fopholetsa:** Mongwe le mongwe o fopholetsa palo ya dibadi. Kwala phopholetso ya gago fa fatshe.
3. **Sethopho:** Rulaganya dibadi ka ditlhopha tse di nang le dibadi di le 10. Go setse dibadi di le kae?
4. **Bala:** Bala palo ya ditlhopha mme o batle palo yotlhe ya dibadi.
5. **Bapisa:** Bapisa palogotlhe le phopholetso ya gago. A di a tshwana?
6. **Buisana:** A phopholetso ya gago e ne e le gaufi le palo ya nnete kgotsa nnyaa? O dirisitse leano lefe **go dira phopholetso ya gago?**

Go bala go monate!

Go bala go na le seabe se se bothokwa mo matshelong a rona a letsatsi le letsatsi. Akanya ka dilo tse o di badileng gompieno. Ke goreng o ne o di bala? O dirileng ka dipalo?



Go balela pele go raya go simolola ka palo le go tlhakanya fa o ntse o bala. Sekao, fa o simolola ka 1 le bo o balela kwa pele ka bo-1, o tsenya 1 nako le nako: 1, 2, 3, 4, 5 jalo le jalo.

Go balela morago go raya go simolola ka palo le go ntsha fa o ntse o bala. Sekao, fa o simolola ka 5 o bo o balela kwa morago ka 1, o ntsha 1 nako le nako: 5, 4, 3, 2, 1 go fitlha o fitlha kwa go 0.

Fa o balela kwa pele, o tsamaela ka fa mojang mo moleng wa dipalo. Fa o bala o boela kwa morago, o tsamaela kafa molemeng mo moleng wa dipalo. O tlhoka bokgoni jono go tlhakanya le go ntsha, le go tlhaloganya kafa dipalo di dirisanang mmogo ka gona.

Go balela kwa pele le kwa morago ka 1

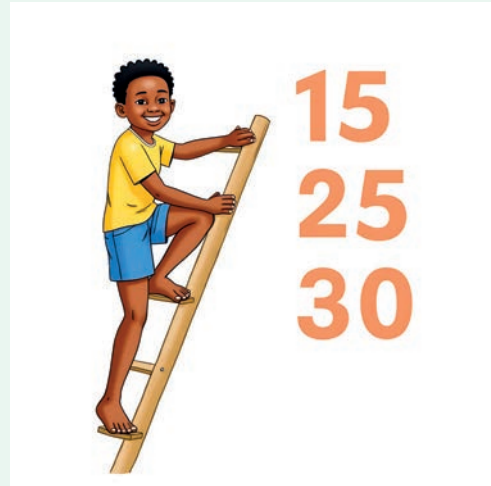
O ka bala ka ditsela tse di farologaneng. Sekao, o bala ka di-1 jaana: 1, 2, 3, 4, 5 ...

O tshwanetse go kgona go balela kwa pele le kwa morago ka 1 go tswa mo palong epe fela e e fa gare ga 0 le 180.

Sekao se se dirilweng

Bala kwa pele le kwa morago ka 1. Kwala dipalo.

1. 0; 1; ___; ___; ___
2. 17; 18; 19; ___; ___; ___
3. ___; ___; ___; 95; 96; 97
4. ___; ___; ___; 178; 179; 180



Tharabololo

1. 0; 1; **2; 3; 4**
2. 17; 18; 19; **20; 21; 22**
3. **92; 93; 94**; 95; 96; 97
4. **175; 176; 177**; 178; 179; 180



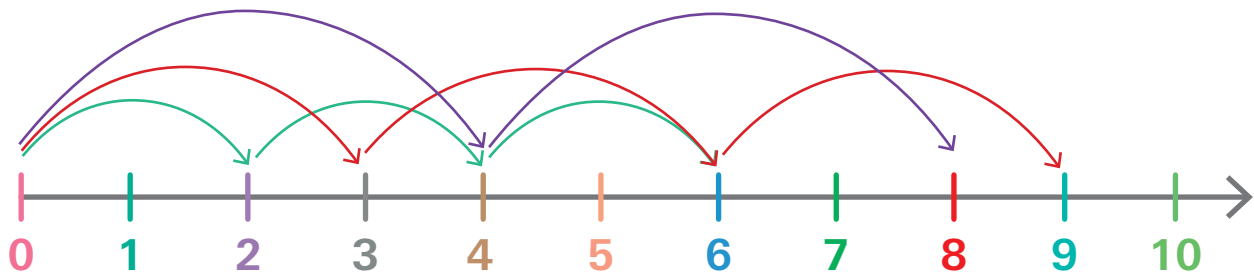
Tirwana

Tlatsa dipalo tse di tlaelang. Balela kwa pele le kwa morago ka 1.

1. 1; 2; 3; ___; ___; ___; ___; ___; ___
2. 10; 11; 12; ___; ___; ___; ___; ___; ___
3. ___; ___; ___; ___; 34; 33; 32; 31; 30
4. ___; ___; ___; 76; ___; ___; ___; 72
5. ___; ___; ___; 50; ___; ___; ___; 54

Go balela kwa pele le kwa morago ka 2; 3 le 4

O ka bala gape ka 2: 2; 4; 6; 8; 10; ka 3: 3; 6; 9; 12; 15; le ka 4: 4; 8; 12; 16; 20.



Tsela e o tlhophang go bala ka yone e ikaegile ka gore o batla go dira eng ka dipholo. O tshwanetse go kgona go bala ka 2; 3; le 4 mo dipalong tse di fa gare ga 0 le 80, le go tswa mo katisong epe ya 2; 3 le 4.



Katiso: karabo e o e bonang fa o atisa palo nngwe ka palo e nngwe e e feletseng

Dikatiso tsa 2 ke 2; 4; 6; 8 jalo jalo.

Dikatiso tsa 3 ke 3; 6; 9; 12 jalo jalo.

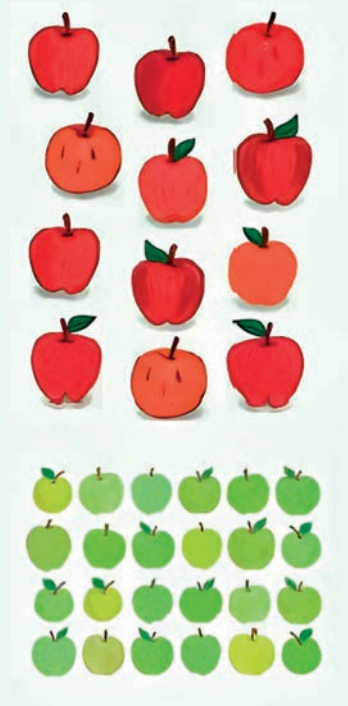
Dikatiso tsa 4 ke 4; 8; 12; 16 jalo jalo.

Dikao tse di dirilweng

1. Balela kwa pele le kwa morago ka 2.
 - a. 0; 2; ___; ___; ___
 - b. 31; 29; 27; ___; ___; ___
2. Balela kwa pele le kwa morago ka 3.
 - a. 0; 3; ___; ___; ___
 - b. ___; ___; ___; 70; 73; ___; ___
3. Balela kwa pele le kwa morago ka 4.
 - a. 0; 4; ___; ___; ___
 - b. 27; 23; 19; ___; ___; ___

Tharabololo

1.
 - a. 0; 2; **4; 6; 8**
 - b. 31; 29; 27; **25; 23; 21**
2.
 - a. 0; 3; **6; 9; 12**
 - b. **61; 64; 67**; 70; 73; **76; 79**
3.
 - a. 0; 4; **8; 12; 16**
 - b. 27; 23; 19; **15; 11; 7**





Tirwana

1. Kopolola o feleetse. Bala ka 2.
 - a. 2; 4; 6; ___; ___; ___; ___; ___; ___
 - b. 26; 24; 22; ___; ___; ___; ___; ___; ___
 - c. ___; ___; ___; ___; 30; 32; 34; 36; 38
 - d. ___; ___; ___; ___; 68; 66; 64; ___; ___
 - e. ___; ___; ___; 50; ___; ___; ___; 58
2. Kopolola o feleetse. Bala ka 3.
 - a. 1; 4; 7; ___; ___; ___; ___; ___; ___
 - b. 22; 19; ___; ___; ___; ___; ___; ___
 - c. ___; ___; ___; ___; 30; 33; 36; ___
 - d. ___; ___; ___; 56; 53; 50; ___; ___
 - e. ___; ___; ___; 23; ___; ___; ___; 35
3. Kopolola o feleetse. Bala ka 4.
 - a. 2; 6; 10; ___; ___; ___; ___; ___; ___
 - b. 30; 26; ___; ___; ___; ___; ___; ___
 - c. ___; ___; ___; ___; 30; 34; 38; 42
 - d. ___; ___; ___; 67; 63; 59; ___; ___
 - e. ___; ___; ___; 50; ___; ___; ___; 34



Monate wa dipalo

Go balela pele le morago ka 5; 10 le 100

Fa re **balela pele** re tsenya (+) palo e le nngwe nako le nako. Fa re **balela kwa morago**, re ntsha (-) palo e le nngwe nako le nako.

Sekao se se dirilweng

Balela pele ka 5 go tswa go 35 go ya go 50	Balela morago ka 5 go tswa go 50 go ya go 35
$35 + 5 = 40$	$50 - 5 = 45$
$40 + 5 = 45$	$45 - 5 = 40$
$45 + 5 = 50$	$40 - 5 = 35$

Balela pele ka 10 go tswa go 35 go ya go 65	Balela morago ka 10 go tswa go 65 go ya go 35
$35 + 10 = 45$	$65 - 10 = 55$
$45 + 10 = 55$	$55 - 10 = 45$
$55 + 10 = 65$	$45 - 10 = 35$

Balela pele ka 100 go tswa go 100 go ya go 500	Balela morago ka 100 go tswa go 500 go ya go 100
$100 + 100 = 200$	$500 - 100 = 400$
$200 + 100 = 300$	$400 - 100 = 300$
$300 + 100 = 400$	$300 - 100 = 200$
$400 + 100 = 500$	$200 - 100 = 100$

Ka go oketsa fa re balela kwa pele le go ntsha fa re balela kwa morago, re balela ka tsela e e tlhamaletseng le e e rulagantsweng. Fa re nna re ikatisa, re tla kgona go bala sentle mo mathakoreng ka bobedi!



Tirwana

1. Kopolola mme o feleetse. Bala ka 5.

- 0; 5; 10; ___; ___; ___; ___; ___
- 50; 45; 40; ___; ___; ___; ___; ___
- ___; ___; ___; ___; 31; 36; ___; ___; ___
- 39; 34; ___; ___; ___; ___; ___; ___

2. Kopolola mme o feleetse. Bala ka 10.

- 0; 10; ___; ___; ___; ___; ___; ___
- 70; 60; ___; ___; ___; ___; ___
- ___; ___; 31; 41; 51; ___; ___; ___
- 84; 74; ___; ___; ___; ___; ___

3. Kopola mme o feleetse. Bala ka 100.

- 100; ___; ___; ___; ___
- 500; ___; ___; 200; ___
- ___; 220; ___; ___
- 455; 355; ___; ___



Go tshameka ka ditiragatso tse di farologaneng

Kamano fa gare ga go tlhakanya (+) le go ntsha (-)

Go tlhakanya le go ntsha di tshwana le ditsala tse dikgolo. Di dira mmogo mo dipalong go re thusa go tlhaloganya kafa dipalo di fetogang ka teng.



Fa re tlhakanya, re kopanya dipalo go dira palo e kgolwane. Fa re ntsha, re tlosa mo palong go dira palo e nnye.

Sekao: $45 + 5 = 50$ and $50 - 5 = 45$

Re a re go tlhakanya le go ntsha ke **ditiragatso tse di farologaneng**.



Pharologanyo: tse di ganetsanang

Tlhakanya (+ tsenya): go balela pele

Ntsha (- fokotsa): balela morago

Opereishene(tiragatso): letshwao le le supang gore o dire eng, jaaka +, -, \times le \div



Tirwana

1. Kopolola le go feleletsa ditiragatso.

tiragatso	tiragatso e e farologaneng
$5 + 1 = \underline{\quad}$	$\underline{\quad} - 1 = 5$
$8 + \underline{\quad} = 10$	$10 - \underline{\quad} = 8$
$10 - 3 = \underline{\quad}$	$3 + \underline{\quad} = 10$
$25 + 30 = \underline{\quad}$	$\underline{\quad} - 30 = 25$
$\underline{\quad} + 13 = 100$	$100 - \underline{\quad} = 13$
$195 - \underline{\quad} = 135$	$135 + \underline{\quad} = 195$

2. Dirisa mareo e kgolo kgotsa e nnye go feleletsa.

Sekao: 108 e kgolo 98.

- 124 ke _____ 121.
- 142 ke _____ 146.
- 155 ke _____ 153.
- 164 ke _____ 169.
- 182 ke _____ 172.
- 196 ke _____ 205.



Tatelano e e thatlogang le e e fologang

Fa re rulaganya lenaane la dipalo go tswa mo go tse dinnye go ya go tse dikgolo, re a re dipalo di rulagantswe ka **tatelano e e thatlogang**.

Fa re di rulaganya go tswa mo go tse dikgolo go ya go tse dinnye, ra re dipalo di rulagantswe ka **tatelano e e fologang**.

Sekao se se dirilweng

1. Rulaganya dipalo ka tatelano e e thatlogang. Bua gore a di sala morago paterone ya go balela kwa pele ka 1; 2; 3; 4; 5; 10 kgotsa 100.
 - a. 2; 4; 3; 0; 1
 - b. 22; 18; 21; 20; 19; 17
2. Rulaganya dipalo ka tatelano e e fologang. Bua gore aa di sala morago paterone ya go balela kwa morago ka 1; 2; 3; 4; 5; 10 kgotsa 100.
 - a. 34; 10; 26; 2; 6; 14; 22; 18; 30
 - b. 50; 60; 10; 80; 70; 20; 40; 30

Tharabololo

1.
 - a. 0; 1; 2; 3; 4 – go balela kwa pele ka 1
 - b. 17; 18; 19; 20; 21; 22 – go balela kwa pele ka 1
 - c. 27; 29; 31; 33; 35; 37 – go balela kwa pele ka 2
2.
 - a. 34; 30; 26; 22; 18; 14; 10; 6; 2 – go balela kwa morago ka 4
 - b. 50; 45; 40; 35; 30; 25; 20 – go balela kwa morago ka 5



Tirwana

1. Rulaganya ka tatelano e e tlhatlogang. Bua gore aa di sala morago paterone ya go bala ka 1; 2; 3; 4; 5; 10 kgotsa 100.
 - a. 175; 179; 180; 177; 173; 176; 174; 178
 - b. 20; 16; 10; 26; 14; 18; 22; 24; 12
 - c. 56; 77; 74; 59; 68; 71; 62; 65
 - d. 18; 14; 38; 26; 30; 22; 10; 34
 - e. 44; 34; 29; 39; 24
 - f. 34; 64; 44; 24; 54
 - g. 320; 120; 220; 420
2. Rulaganya ka tatelano e e fologelang. Bua gore a di sala morago paterone ya go balela morago ka 1; 2; 3; 4; 5; 10 kgotsa 100.
 - a. 159; 160; 158; 156; 155; 157
 - b. 28; 36; 34; 40; 38; 32; 42; 44; 30
 - c. 63; 69; 54; 66; 51; 48; 60; 57
 - d. 32; 28; 48; 24; 40; 44; 20; 36
 - e. 48; 38; 33; 53; 43
 - f. 42; 22; 52; 32; 62
 - g. 150; 450; 350; 250
3. Simolola ka 80. Kwala dipalo tsotlhe ka tatelano e e tlhatlogang, o di bala ka di 5 go isa go 100.
4. Simolola ka 100. Kwala dipalo tsotlhe ka tatelano e e fologang, o di bala ka di 2 go isa go 92.

Go balela kwa pele le kwa morago

Go fitlha jaanong, re ntse re balela kwa pele le kwa morago go fitlha go 180. Jaanong, re tla ithuta go bala go fitlha go 200.

Sekao se se dirilweng

1. Kopolola o feleetse. Bala ka 2.
 - a. 190; 192; ___; ___; ___; ___
 - b. 200; 198; ___; ___; ___; ___
2. Kopolola o feleetse. Bala ka di 3.
 - a. 185; 188; ___; ___; ___; ___
 - b. 200; 197; ___; ___; ___; ___
3. Kopolola o feleetse. Bala ka 4.
 - a. 164; 168; ___; ___; ___; ___
 - b. 200; 196; ___; ___; ___; ___
4. Kopolola o feleetse. Bala ka 5.
 - a. 175; 180; ___; ___; ___; ___
 - b. 200; 195; ___; ___; ___; ___



5. Kopolola o feleetse. Bala ka 10.

a. 150; 160; ___; ___; ___; ___

b. 200; 190; ___; ___; ___; ___

Tharabololo

1. a. 190; 192; **194; 196; 198; 200**

b. 200; 198; **196; 194; 192; 190**

2. a. 185; 188; **191; 194; 197; 200**

b. 200; 197; **194; 191; 188; 185**

3. a. 164; 168; **172; 176; 180; 184**

b. 200; 196; **192; 188; 184; 180**

4. a. 175; 180; **185; 190; 195; 200**

b. 200; 195; **190; 185; 180; 175**

5. a. 150; 160; **170; 180; 190; 200**

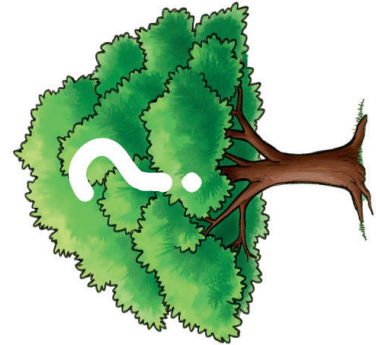
b. 200; 190; **180; 170; 160; 150**



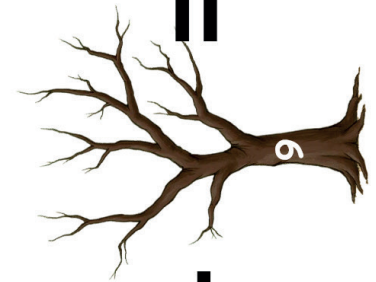


Tirwana

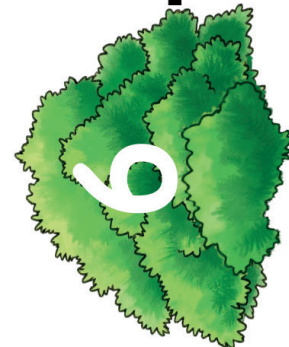
1. Kopolola o feleletse. Bala ka di 2.
 - a. ___; ___; ___; 196; 198; 200
 - b. ___; ___; ___; 194; 192; 190
2. Kopolola o feleletse. Bala ka di 3.
 - a. 185; ___; ___; ___; ___; 200
 - b. 198; ___; ___; ___; ___; 183
3. Kopolola o feleletse. Bala ka di 4.
 - a. 184; 188; ___; ___; 200
 - b. 179; 175; ___; ___; 163
4. Kopolola o feleletse. Bala ka di 5.
 - a. ___; ___; ___; ___; 195; 200
 - b. 193; ___; ___; ___; ___; 168
5. Kopolola o feleletse. Bala ka di 10.
 - a. ___; ___; ___; 180; 190; 200
 - b. ___; ___; ___; 160; 150
6. Rulaganya ka tatelano e e tthatlogang. Bua gore a di sala morago paterone ya go bala ka 1; 2; 3; 4; 5; 10 kgotsa 100.
 - a. 175; 200; 180; 185; 190; 175
 - b. 191; 197; 185; 194; 188; 200
 - c. 198; 194; 192; 196; 190; 200
 - d. 200; 500; 100; 300; 400



||



+



Dipalo tsa tlhogo ka nnete e e kgathisang

Ditogamaano tsa dipalo tsa tlhogo

Dipalo tsa tlhogo ke bokgoni jo bo akaretsang go rarabolola dipalo ka bonako mo tlhogong ya gago, ntle le go dirisa pampiri, dikhalekhuleita kgotsa didirisiwa tse dingwe. E thusa go tokafatsa tlhologanyo ya gago ya dipalo, e leng maatla a gago a go tlhologanya le go dira ka dipalo bonolo. Fa o kgona go araba dipotso tsa dipalo ka bonako, go dira gore o itshepe le go go baakanyetsa dipalo tse di kwa godimo.





Tirwana

Leka go araba dipotse tse ka tlhogo ka bofefo jo bo kgonegang.

1. Go tlhakanya
 - a. $150 + 30$ ke bokae?
 - b. $75 + 25$ ke bokae?
 - c. $130 + 70$ ke bokae?
2. Go ntsha
 - a. $200 - 75$ ke bokae?
 - b. $180 - 40$ ke bokae?
 - c. $145 - 25$ ke bokae?
3. Go menaganya gabedi
 - a. Gabedi 45.
 - b. Gabedi 60.
 - c. Gabedi 110.
4. Go ripa gare
 - a. Seripagare sa 100 ke ____
 - b. Seripagare sa 150 ke ____
 - c. Seripagare sa 80 ke ____



Leka go araba dipotso tseno mo tlhogong ya gago ka bonako jo bo kgonegang. Fa dipotso dingwe di go fa matsapa, leka go dirisa maano a a fa tlase go go thusa go di rarabolola ka bonako.

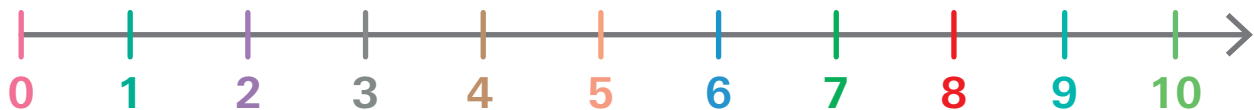
Ditogamaano tsa go balela

Fa o rarabolola dipalo tsa tlhogo, go na le mekgwa e mentsi e o ka e dirisang. Maano ano a go thusa go kgaoganya ditharaano ka dikgato tse di bonolo gore o kgone go a rarabolola mo tlhogong ya gago.

Kwala palo e kgolo pele: Fa o tlhakanya kgotsa o ntsha, ka metha simolola ka palo e kgolwane. Se se dira gore go nne botlhofo go balela kwa pele kgotsa kwa morago.

Sekao: Mo palong ya $45 + 150$, simolola ka 150 o bo o tsenya 45 . Seno se bonolo go na le go simolola ka 45 o bo o tsenya 150 .

Dirisa molapalo: Mola wa dipalo ke sedirisiwa sa pono se se go thusang go bona dipalo ka tatelano.



O ka akanya ka molapalo kgotsa wa o tshwantsha ka go o thala go go thusa go tlhakanya kgotsa go ntsha. Fa o tlhakanya, **tsamaela kwa mojeng** mo molapalong. Fa o ntsha, **tsamaela kwa molemeng**.

Sekao: Go rarabolola $120 - 30$, simolola ka 120 mo molapalong mme o tsamaye mo diphatlheng di le 30 go ya molemeng, o feleletsa mo go 90 .



Oketsa gabedi kgotsa ripa ka bogare.

Fa o menaganya palo gabedi, o oketsa palo eo ka e e tshwanang le yona. Fa o kgaoganya palo ka seripagare, o e kgaoganya ka go lekana ga 2. Tse ke maano a a bonako le a a mosola a dipalo tsa tlhogo.

Sekao: Go menaganya 50 gabedi, e akanye jaaka $50 + 50 = 100$. Go kgaoganya 100 ka seripagare, e akanye jaaka $100 \div 2 = 50$.

Aga kgotsa o agolole

Leano leno le akaretsa go kgaoganya dipalo ka dikarolo tse dinnye go dira gore go tlhakanya kgotsa go ntsha go nne motlhofo. O ka aga palo ka go tlhakanya go fitlhelela palo. O ka thuba palo ka go ntsha dikarolo.

Sekao: Go tlhakanya $195 + 15$, sa ntlha kgaoganya 195 go nna $100 + 90 + 5$, o be o tsenya $5 + 10 = 15$. O sala ka $100 + 90 + 5 + 15$.

Go aga palo gape, tsenya $90 + 20 = 110$. Go tswa foo tsenya $100 + 110 = 210$.

Mokgwa ono o dira gore go nne motlhofo go tshwara dipalo tse dikgolo.



Tirwana 1

Go tlola mo molapalo

Ikatise go dirisa molapalo go tlhakanya le go ntsha.

Tshwantsha molapalo ka 10 go tswa go 0 go ya go 200.

Simolola ka palo e e tshwanang le 140 mme o ikatise go tlolela kwa pele go tlhakanya kgotsa kwa morago go ntsha. Sekao, fa o simolola ka 140 mme o ntsha 20, o tshwanetse go wela mo go 120. Leka dintlha tse di farologaneng tsa go simolola le go tlola.



Tirwana 2

Go menaganya palo le go e ripa fa gare

Nonotsha bokgoni jwa gago jwa go menaganya dipalo gabedi le go di ripa fa gare.

Kwala dipalo tse di farologaneng tse di fa gare ga 0 le 200. Menaganya palo nngwe le nngwe gabedi, o bo o kgaoganya palo nngwe le nngwe ka bogare. Sekao, fa o simolola ka 75, e menaganye gabedi gore o bone 150, o bo o kgaoganya 150 ka bogare gore o boele kwa go 75. Boeletsa seno ka dipalo tse dingwe.



Tirwana

Go aga le go agolola dipalo

Thuba kgotsa aga dipalo go nolofatsa go tlhakanya le go ntsha.

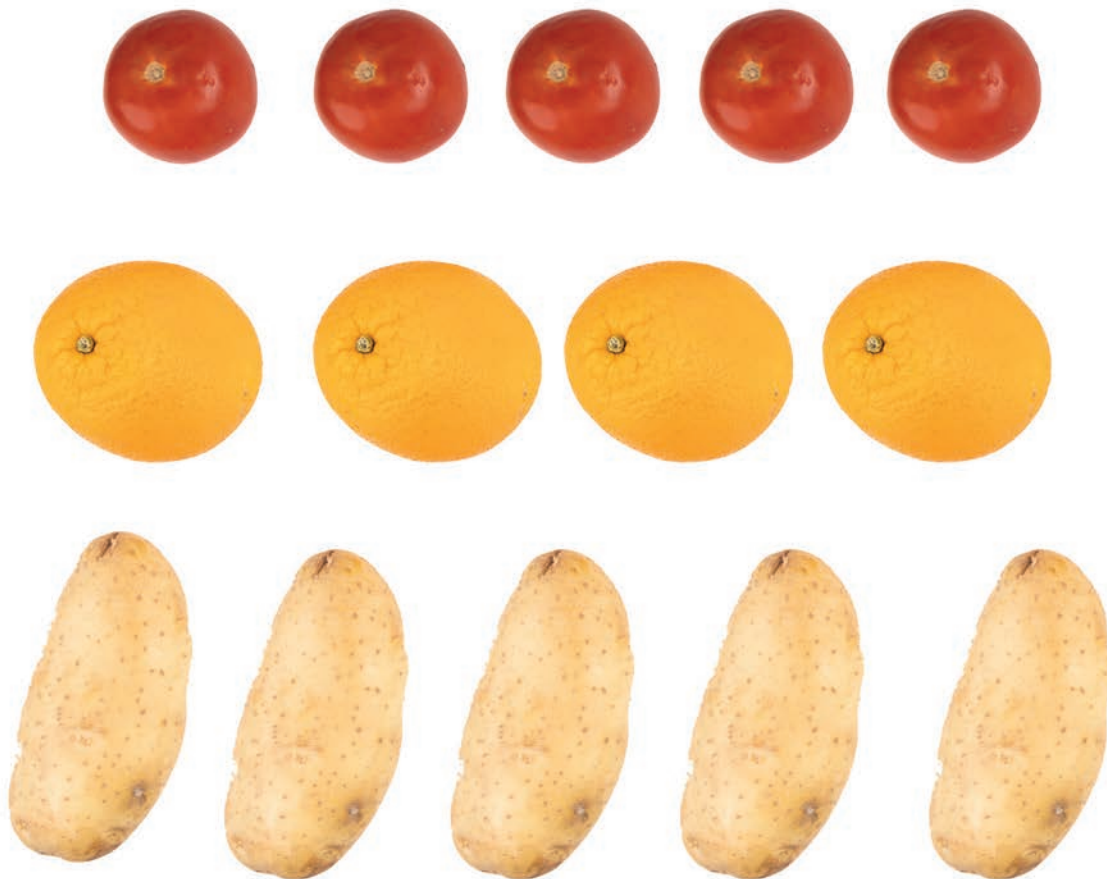
Tsaya palo e e gaufi le 200, jaaka 190, mme o akanye gore o ka e aga jang go fitlha go 200 ka go tsenya dipalo tse dinnye kgotsa wa e thuba ka go ntsha. Sekao, fa o na le 190, tsenya 10 go fitlha go 200. Fa o na le 200, ntsha 15 go bona 185. Ikatise jalo ka dipalo tse di farologaneng go tokafatsa bokgoni jwa gago.

Go bala didirisiwa ka tsela e e ikanyegang

Go bala ke kgono e re e dirisang letsatsi le letsatsi. E ka tswa re le mo ntlwaneng ya boapeelo, mo tshingwaneng kgotsa re tshameka le ditsala, go bala go re thusa go tlhaloganya dilo botoka.

Tshingwana ya dijo ya ga Alo

Moso mongwe le mongwe, Alo o thusa mmaagwe go tsaya merogo mo tshingwaneng ya bona. Gompiono, ba ne ba kgetlha ditamati di le 12, dinamune di le 8 le ditapole di le 6. Go bala merogo go thusa Alo go itse gore o na le tse kae, mme go dira gore a ikutlwe e le mothusi yo mogolo mo tshingwaneng!





Tirwana

1. Alo o na le ditamati di le 12 tse di bohibidu jo bo galotseng, dinamune di le 8 tse di matute le ditapole di le 6 tse di itekanetseng.
 - a. O na le ditamati le dinamune di le kae ka kakaretso?
 - b. Fa ba ka ja ditamati di le 3 ka dijo tsa motshegare, go tla bo setse ditamati di le kae?
 - c. Alo o tla nna le ditapole di le kae fa a ka kgobokanya tse dingwe di le 6 moragonyana mo letsatsing leo?
 - d. Aa Alo o na le ditamati tse dintsi kgotsa ditapole tse dintsi?
2. Serwalo o ne a kokoanya didirisiwa tse di fa tlase go katisa bokgoni jwa gagwe jwa dipalo le go rarabolola dipalo.
 - a. Serwalo o na le didirisiwa di le kae mo setshwantshong sengwe le sengwe?
 - b. Kwala dikarabo tsa gago tsa potso a. jaaka maina a dipalo.

Go bala didirisiwa

Go bala didirisiwa ke bokgoni jwa dipalo jo bo re thusang go tlhaloganya dipalo botoka. Fa re bala didirisiwa, re bona gore dipalo di amana jang le lefatshe la nnete. Fa re kgona go bala go fitlha go 180, re dira ka dipalo tse dikgolo mme re nna le tshepo mo bokgoning jwa rona jwa go bala.

Sekao: Simolola ka go bala didirisiwa di le 10 mme o di kgobokanye mmogo. Go tswa foo, bala tse 10 tse di latelang, jalo jalo, go fitlha o fitlha go 180.



Tirwana

Kgobokanya palo e ntsi ya didirisiwa tse dinnye, jaaka dikonopo, dibaga kgotsa matlapa. Simolola go di bala ka bongwe ka bongwe go fitlha go 180.

Latedisa go bala ga gago ka go kgobokanya didirisiwa ka ditlhopa tsa 10. Seno se dira gore go nne motlhofo go bala e bile se go thusa gore nako le nako o kologelwe gore o ne o eme kae fa o bala.

1. Ke didirisiwa dife tse di ka kgobokanngwang go balwa?
2. Didirisiwa di tshwanetse go balwa jang?
3. Ke mokgwa ofe o motle wa go bala?
4. Ke eng fa go rulaganya ka lesome go thusa?

Go bala ka sethophha

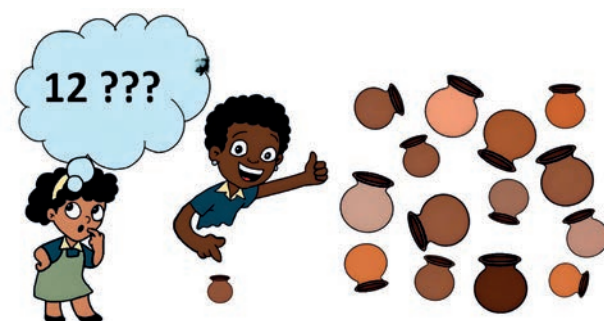
Ikatise go bala le ba bangwe go tokafatsa go bala ka nepo le go dira mmogo ka sethophha. Dira mo sethophheng sa barutwana ba le 4 go ya go ba le 6. Baithuti ba refosana go bala didirisiwa di le 10 go fitlha go 200.

Seno se go thusa go ikatisa go reetsa le go netefatsa gore go bala go nepagetse. Fa mongwe a dirile phoso, sethophha se ka thusa go e baakanya.



Go fopholetsa le go netefatsa ka go bala

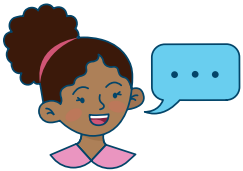
Go fopholetsa go go thusa go abelela sentle gore go na le didirisiwa di le kae kwantle ga go di bala ka bongwe ka bongwe. Dinako tsotlhe morago ga go fopholetsa, tlhola phopholetso ya gago ka go bala go bona gore e ne e le gaufi go le kana kang.



Phopholetso ya sethophha

Tokafatsa bokgoni jwa gago jwa go fopholetsa ka go dira lo le sethophha.

Mongwe le mongwe mo sethophheng a fopholetse gore go na le didirisiwa di le kae mo sethophheng se segolo sa dilo tse di kgobokantsweng. Fa mongwe le mongwe a setse a fophoeditse, dirang mmogo go bala didirisiwa tseo mme lo bone gore ke mang yo o neng a le gaufi thata.



Tlotlang ka gore lo dirile diphopholetso tsa lona jang le gore lo lemogile eng fa lo ntse lo bala.



Go bala ka sethophha

Go bala ka sethophha ke tsela e e monate ya go ikatisa bokgoni jwa go bala le ba bangwe. E thusa go aga tirisano mmogo ya sethophha le go netefatsa gore mongwe le mongwe o nna botoka mo go baleng. Go bala ka ditlhophha go ka dirwa ka ditsela tse di farologaneng, jaaka go balela kwa godimo mmogo kgotsa go refosana.



Tirwana

1. Wena le setlhophha sa gago, emang lo dirile sediko. Simololang go bala ka di 5. Moithuti wa ntlha a re '5', yo o latelang a re '10' jalo jalo go fitlhela lo fitlha go 180. Lekang go bala gape ka 2; 3; 4; 10 le 100.



2. Emang ka sediko wena le setlhophha sa gago. Simolola ka go tlhophha palo go simolola go bala. Mongwe le mongwe mo setlhophheng a bue palo e e latelang fa yo mongwe a ntse a bala go ya go 200. Lekang go bala jalo gape ka 2; 3; 4; 10 le 100.
3. Oketsa bothata jwa go bala ga ditlhophha ka go baya tekanyetso ya nako. Mo setlhophheng sa gago, bona gore o ka bala ka bonako jo bo kana kang go fitlha go 200. Rulaganya sebalanako mme o leke go fenyha nako ya gago e e gaisang. Fa yo mongwe a dirile phoso, simolola seša mme o leke gape. Seno se thusa go tokafatsa tsepamo le lebelo mo go baleng.

Go bala le go peleta

Matshwao a dipalo ke dipalo tse di dirisiwang go emela dipalo. Matshwao ano a simolola ka 0 go ya go 9, mme a kopanngwa go bopa dipalo tse dikgolo. Sekao, 25 e nna teng fa go tlhakannngwa 20 le 5 (masome a mabedi le botlhano).

0 1 2 3 4 5 6 7 8 9

Maina a dipalo ke mafoko a re a dirisang go tlhagisa matshwao a dipalo ka sebopego sa mokwalo. Sekao, letshwao la palo 250 le kwadilwe ka mafoko jaaka makgolo a mabedi le masome a matlhano.

Sekao se se dirilweng

1. Kwala palo 482 ka mafoko.
2. Kwala leina la palo ya 123.
3. Kwala letshwao la palo la makgolo a mane le masome a robedi le bosupa.

Tharabololo

1. makgolo a mane le masome a robedi pedi
2. lekgolo le masome a mabedi le boraro
3. 487



Tirwana

1. Leba dipalo tse di latelang. Biletsa maina a tsona kwa godimo.



2. Kwala matshwao a dipalo tsa maina ano a dipalo.
 - a. makgolo a mabedi le masome a mararo le botlhanano
 - b. makgolo a mane lesome le bobedi
 - c. lekgolo le masome a robongwe le robongwe
3. Kwala maina a dipalo a matshwao ano a dipalo.
 - a. 214
 - b. 249
 - c. 238
 - d. 1254.

Go tshwantshanya dipalo

Fa re tshwantshwanya dipalo, re tshwanetse go tthalosa gore **go feta**, **kwa tlase** kgotsa **go lekana** le palo e nngwe. Re dirisa matshwao a a kgethegileng go re thusa go tshwantshanya.



Go feta (>): Letshwao $>$ le tthalosa gore palo e le nngwe e feta e nngwe. Sekao: $18 > 12$ e tthalosa gore 18 e feta 12.



Kwa tlase ga (<): Letshwao $<$ le tthalosa g ore palo e le nngwe e nnye mo go e nngwe. Sekao: $12 < 18$ e tthalosa gore 12 e nnye mo go 18.

Go lekana le (**=**): Letshwao $=$ le supa gore dipalo tse pedi di a lekana. Sekao: $18 = 18$ e tthalosa gore 18 e lekana le 18.





Kgolo mo go (>): Fa palo e e kafa molemeng wa letshwao > e feta palo e e kafa mojeng

Nnye mo go (<): Fa palo e e kafa molemeng wa letshwao la < e le kwa tlase ga palo e e kafa mojeng

Lekana le (=): Fa palo e e kafa molemeng wa letshwao la = e tshwana le palo e e kafa mojeng



Tirwana

Tshwantshanya dipalo. Go tswa foo dirisa >, < kgotsa = go dira gore polelopalo nngwe le nngwe e nne boammaaruri.

1. $2 \underline{\quad} 5$

2. $5 \underline{\quad} 2$

3. $17 \underline{\quad} 10$

4. $10 \underline{\quad} 17$

5. $32 \underline{\quad} 27$

6. $95 \underline{\quad} 59$

7. $112 \underline{\quad} 121$

8. $167 \underline{\quad} 176$

9. $176 \underline{\quad} 167$

10. $45 \underline{\quad} 40 + 5$

11. $40 + 5 \underline{\quad} 40 + 5$

12. $45 - 5 \underline{\quad} 40 + 5$

13. $200 - 74 \underline{\quad} 96 + 6 + 24$

Go arognaya dipalo tse dikgolo

Go lemoga boleng jwa palo nngwe le nngwe

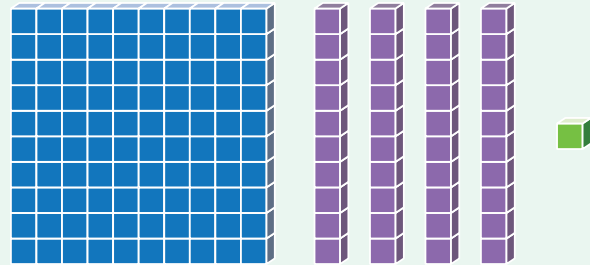
Fa o gakologelwa, **bolengkemedi** e kaya boemo jwa letshwaopalo mo palong, jaaka kholomo ya masome kgotsa kholomo ya bongwe. Sekao: boleng jwa lefelo jwa 3 mo go 135 ke masome a le 3.

Boleng e kaya gore palo e na le eng fa o e aroganya. Sekao: boleng jwa 55 ke $50 + 5$.

Sekao se se dirilweng

Leba diboloko tsa Dienes.

1. Kwala bolengkemedi jwa lefelo la diboloko.
2. Kwala leina la palo la karabo ya gago.



Tharabololo

1.

Makgolo (Mk)	Masome(Ms)	Metso (Mt)
1	4	1

2. Iekgolo masome a mane le bongwe

Sekao se se dirilweng

Barutwana ba Mophato 3 ba ne ba ile kwa mmarakeng. Thabo a rekela mophato wa bona diapole. Thabo o ne a setse a na le diapole di le 24. Jaanong a reka diapole tse dingwe gape di le 15. O na le diapole di le kae jaanong?



Tharabololo

Simolola ka diapole di le 24. Tsenya diapole di le 15 go feta.
 $24 + 15$ ke bokae?

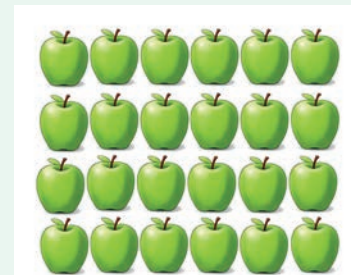
- Kwala dipalo mo sethalong sa bolengkemedi

Masome	Metso
2	4
1	5

- Tsenya metso mo kholomong: $2 + 1$

Tsenya metso mo kholomomg: $4 + 5$.

Masome	Metso
2	4
1	5
3	9



Sekao se se dirilweng

Bolengkemedi jwa palo e e thaletsweng ke bokae?

Tharabololo

<u>78</u>	
Masome	Metso
7	8

Bolengkemedi jwa 7 ke masome.



Tirwana

- Sipho o na le dikgomaretsi di le 38. O bona dikgomaretsi tse dingwe gape di le 26 go tswa mo tsaleng ya gagwe. Sipho o na le dikgomaretsi di le kae ka kakaretso?



- Dirisa sethalo sa bolengkemedi go bona dikarabo.

a. $24 + 45 = \square$

b. $56 + 16 = \square$

c. $70 + 11 = \square$

d. $42 + 53 = \square$

e. $61 + 26 = \square$

f. $64 + 32 = \square$

Motshameko wa patlo: Lebelo la dipalo

Mophato wa gago o tla kgaogana ka ditlhopha. Setlhopha sengwe le sengwe se taboga go rarabolola ditharaano tsa go tlhakanya, go ntsha kgotsa go atisa ka mokgwa wa lebelo. Leloko le le latelang la setlhopha le ka simolola fela fa leloko la setlhopha le le fetileng le rarabolotse tharaano sentle.

Sekao se se dirilweng



1. Go na le metlolo e le kae go tswa go 3 go ya go 11?
2. Go na le metlolo e le kae go tswa go 11 go ya go 3?

Tharabololo

1. Bala. Go metlolo e le robedi.
2. Bala. Go metlolo e le robedi.

Palo ya metlolo mo gare ga 3 le 11 e bitswa **pharologanyo** mo gare ga 3 le 11.



Tirwana

- Dirisa molapalo go bona pharologanyo fa gare ga dipalo.
- Fa pharologanyo fa gare ga dipalo tse pedi e le 20 mme nngwe ya dipalo e le 12, palo e nngwe ke efe?



Go fenyka ka dipalo

Sekao se se dirilweng

Thami o na le dikgomaretsi di le 38. O bona dikgomaretsi tse dingwe gape di le 26 go tswa mo tsaleng ya gagwe. Thami o na le dikgomaretsi di le kae ka kakaretso?

Tharabololo

Tlhakanya masome pele: $30 + 20 = 50$

Jaanong tlhakanya metso: $8 + 6 = 14$

$50 + 14 = 64$, ka jalo $38 + 26 = 64$

Thami o na le dikgomaretsi di le 64 ka kakaretso.



Tirwana

Tlhakanya masome pele. Morago o bo o tlhakanya le metso.

1. $24 + 45 = \square$

2. $64 + 32 = \square$

Sekao se se dirilweng

Feleletsa polelo e: 5 go feta 562 ke ____ mme 100 go feta 562 ke ____.

Tharabololo: 5 go feta 562 ke **567** mme 100 go feta 562 ke **662**.



Tirwana

Feleletsa dipolelo tse.

1. 10 go feta 697 ke ___ mme 100 go feta 697 ke ___.
2. 10 go feta 235 ke ___ mme 100 go feta 235 ke ___.
3. 10 kwa tlase ga 587 ke ___ mme 100 kwa tlase ga 587 ke ___.
4. 10 kwa tlase ga 1000 ke ___ mme 100 kwa tlase ga 1000 ke ___.

Sekao se se dirilweng

Dirisa dipalo tse di menageneng go tlhakanya le go ntsha. Se se bitswa **mokgwa wa go kgaoganya**.

$$1. \quad 5 + 6 = \square$$

$$2. \quad 14 + 1 - 7 = \square$$

Tharabololo

$$1. \quad 5 + 5 + 1 = 10 + 1 = 11$$

2. Kgaoganya 14 ka $7 + 7$ gore nngwe ya dipalo e tshwane le e e filweng.

$$14 + 1 - 7$$

$$= 7 + 7 + 1 - 7$$

$$= 7 + 1 = 8$$

