



MPHATO

1

PUKU YA
MOITHUTI

Platinum

Mabokgoni a Bophelo

J. Mansfield • S. Mahomed • L. Shaw • C. Gleeson-Baird

Platinum Mabokgoni a Bophelo Mphato wa 1 Puku ya Moithuti

Maskew Miller Learning
10 Freedom Way, Milnerton, Cape Town, 7441

© Maskew Miller Learning (Pty) Ltd 2025

Ditokelo tšohle di šireleditšwe. Ga go karolo ya phatlalatšo ye, yeo e kago tšweletšwa, go bolokwa ka mokgwa wa go ntšha, goba go fetošwa ka mokgwa goba sebopego sefe goba sefe (elektroniki, semotšhene, go fotokopa, go gatišwa goba ka mokgwa wo mongwe) ntle le tumelelo ya go ngwalwa pele ya mong wa tokelo ya ngwalollo.

Go kgopela tumelelo ya go tšweletša lefsa goba go fetola karolo ye nngwe ya phatlalatšo ye, o kgopelwa gore o ikopanye le ba lefapha la Ditokelo le Ditumelelo mo go 021 532 6000 goba romela e-meile go rightsgranting@mml.co.za.

E gatišitšwe la X ka 20XX

ISBN 978-1-779-83528-4
ePDF ISBN 978-1-779-89561-5

Mophatlalatši : Mhlahli Ndzendze
Morulaganyimogolo : Ru Bailey
E rulagantšwe ke: Molelato Lati
Tlhamo ya khabara ka : MML Visual Design
Seswantšho sa khabara ka : MML Visual Design
Peakanyo ya puku ka : MML Visual Design
Diswantšho ka : Chamique Johnson, MML Design Studio; Robin Mcbride, Raphael Njoroge, Bennie Kruger, Fungai Mudimu, Angie Bowring, Patrick Latimer, Susie Appleby, Tebatso Machaba, Ken Etberg, Ronell Lareman, Izak Vollgraaf, Danielle Albertyn, Kobus Galloway
Tšweletšo ka : The Icon Agency
E gatišitšwe ke

Ditebogo

Mongwadi le mophatlalatši ba leboga tšhomišo ya diswantšho go tšwa go:
p49b, sundaemorning/123RF; p49c, vystekphotographie/123RF; p76c, peopleimages12/123RF; p76d, peopleimages12/123RF; p93b, gianlucaPICCIN/123RF; p93e, lexmomot/123RF; p108c, newgena/123RF; p110, sDart/123RF; p112b, Jangobeat/123RF; p112c, sarahdoow/123RF; p112d, sunshineseeds/123RF; p128b, digicomphoto/123RF; p128c, fvphotography/123RF; p129a, sereznii/123RF; p129b, sereznii/123RF; p129c, galsand2/123RF; p129d, poko42/123RF; p133, sDart/123RF; p135a, jat306/123RF; p135b, grynold/123RF; p135c, erstudiostok/123RF; p136a, petert/123RF; p140c, idmanjoe/123RF; p140f, photonaatoy/123RF; p140g, sergey0506/123RF; p140i, supermatos/123RF; p140m, lightkeeper/123RF; p146a, macrovector/123RF; p146c, djvstock/123RF; p172, jemastock/123RF;

Shutterstock:

p13c, PEPPERSMINT; p13e, Shutterstock; p13g, Kanghophoto; p13h, Shutterstock; p13i, Shutterstock; p13j, PixelsMD Production; p16a, Evgeny Atamanenko; p16b, Vadym Lavra; p16c, ArtHeart; p16d, alazur; p16e, Kristin F. Ruhs; p22a, Marinchev Viacheslav; p22c, SAMONNOY; p23d, museyushaya; p24a, Mix Tape; p24b, ClassicVector; p24c, Passion-pearl; p28, jsabirova; p33a, mr.staphylococcus aureus; p33b, Dualororua; p40a, fizkes; p40b, Odua Images; p47a, Picture-Xpress; p47b, CristinaM_23; p49a, rbkomar; p49d, Lucky Business; p49e, SeventyFour; p49f, Alberto Cotilla; p58a, Dikushin Dmitry; p58b, megaflopp; p59a, Venkatesa Perumal; p59b, wavebreakmedia; p59c, Roman Samborskyi; p63b, Mr.Teerapong Kunkaero; 63d, Mr.Teerapong Kunkaero; p68a, fizkes; p68b, AYO Production; p68c, Ground Picture; p69, Your_universe; p70a, Tenstudio; p70b, Colorfuel Studio; p70c, Mark Skitsky; p70d, BlueRingMedia; p70e, Dualororua; p75b, Vector Club; p75c, Victor Brave; p75d, Colorfuel Studio; p76a, PeopleImages.com - Yuri A; p76b, Lucian Coman; p83e, afniandji8999; p84c, Ali_Cobanoglu; p87, Roman Chazov; p90a, Art_Volkusha; p90b, David Michael Bellis; p90c, Vortex525; p93a, Klever Level; p93c, Krysek; p93d, Reshetnikov_art; p107a, Peter Turner Photography; p108a, Africa Studio; p108b, monticello; p108e, Marcin Osman; p108f, Ryzhkov Oleksandr; p108g, Agami Photo Agency; p109a, Taras Grebinets; p109b, BurntImagesLLC; p109c, Ondrej Prosicky; p112a, Vaclav Sebek; p113b, Jakaphop Rungrot; p115b, Pisut chounyoo; p115d, Agami Photo Agency; p123a, Zoom Team; p123b, pp1; p123c, yevgeniy11; p123d, MaraZe; p123f, Clara Bastian; p123g, StockMediaSeller; p123h, yas_creative; p123k, MaraZe; p128d, Timmary; p130a, Aninka Bongers-Sutherland; p130b, Thao Lan; p130c, Axel Mel; p134a, xNick; p134b, Javier Catano Gonzalez; p134c, EditheVideo; p134d, Frank Fennema; p136b, xNick; p136c, Javier Catano Gonzalez; p136d, Day Of Victory Studio; p136e, Yuri Orgunov; p138a, Piotr Piatrouski; p138b, Hyserb; p138c, anandoart; p139a-e, anandoart; p140a, iphotosmile; p140b, alexgo.photography; p140d, Stokkete; p140e, Camp1994; p140h, Justin Beyerlin; p140j, Skrypnikov Dmytro; p140k, U. J. Alexander; p140l, Bannafarsai_Stock; p140n, Evannovostro; p141, Sanches11; p143, Sanches11; p146b, Black Creator 24; p146d, haraki project; p158b, Komsan Loonprom; p158c, FamVeld; p160b, David Michael Bellis; p160c, Prostocock-studio; p161a, AngelaAllen; p161b, Douglas Cliff; p162a, New Africa; p162b, Vlyaks; p162c, CL Shebley; p162d, Douglas Cliff; p162e, tawanroong; p166a, Anastacia - azzzya; p166b, Rodrigorc; p168a, KK.KICKIN; p168b, SureeNah; p168c, nednapa; p169, Istomina Olena; p171, KK.KICKIN; p176a, Javier Catano Gonzalez; p176b, xNick; p176c, EditheVideo; p177a, SureeNah

Mongwadi le mophatlalatši ba leboga tumelelo ya go šomiša ditšweletšwa go tšwa go:
p92, Sockeye Media LLC;

Le amogetšwe



Moithuti yo a rategago,

Re a go amogela pukung ye ya go kgahliša ya morutwana! O tlo tsebana le baanegwa ba go kgahliša kudu; go fo swana le ge moanegwa yo mongwe le yo mongwe a kgethegile ka tsela ya gagwe, go bjalo le ka wena!



Thabo



Tuck Shop Lady



Lily



Sahil



Tebogo



Amina



Zara



Lulama



Lina



Aiden



Khaya

O tlo hwetša dilo tše di latelago ka pukung ya gago ya go ithuta, tše di tla go go hlahla leetong la go thabiša la go tlala ka go ithuta le go utulla dilo tše diswa.

- **A re thome:** Thutwana e nngwe le e nngwe e thoma ka tshedimošo ya bohlokwa ye o tlogo go ithuta ka yona.
- **Nako ya go utolla:** Ye ke mešongwana ya go thabiša ya go go hlohletša go ithuta dilo tše diswa, dintlha tša go kgahliša le go rarolla diphasele.
- **Mantšu a maswa:** Ithute mantšu a maswa ao a tlogo go go thuša go godiša tlotlontšu ya gago.
- **A re lekole:** Mafelelong a thutwana e nngwe le e nngwe, dira mešongwana ye gore o ikgantšhe ka dilo tše dintši tše o ithutilego tšona!
- **Tlhahlobo e rulagantšwego:** Tlhahlobo ye e tla go thuša go bona ge e ba o kwešišitše gabotse dilo ka moka tše o di rutilwego kotareng ka moka.

Puku ye e tla go kgothaletša go šoma o le tee, le ka dihlopha. Le tlo opela, la bina le go ithuta mmogo. Netefatša gore o lokišetša thuto e nngwe le e nngwe e bile o morutiši wa gago dipotšišo tše dintši ka mokgwa wo o ka kgonago.

Itokišetše go ithuta, go raloka le go hlama dilo le bagwera ba gago.

Ipshine ka go ithuta.

Diteng

Kotara ya 1

Sererwa sa 1 Mabapi le nna	1
Dintlha tša bomotho	2
Re ikgethile ebile re ba moswananoši.....	3
Dilo tšeo nka di dirago.....	4
Naa ke swana bjang le bagwera ba ka?	5
Naa ke fapana bjang le bagwera ba ka?	6
A re lekole	7
Sererwa sa 2 Sekolong	8
Leina la sekolo, la morutišo le la hlogo ya sekolo.....	10
Fao o hwetšago mafelo a go fapana ka sekolong.....	11
Dikamehla le melao ya ka phapošing ya borutelo.....	13
Naa ke ya bjang sekolong?	15
A re lekole	17
Sererwa sa 3 Ditlwaedi tše dibotse	18
Boroko	20
Go ja dijo tša phepo.....	21
Tšhomišo ya maleba ya ntlwana ya boithomelo.....	22
Go e swara e hlwekile.....	23
Go itšhidulla nako le nako le go raloka	24
A re lekole	25
Sererwa sa 4 Boso	26
Tšhathe ya letšatši le letšatši ya boso	28
Boso le rena	30
Matšatši a sedumedi le matšatši a mangwe a go ikgetha.....	32
A re lekole	33
Tliahlobo e rulagantšwego: Kotara ya 1	34

Kotara ya 2

Sererwa sa 5 Lapa la gešo	36
Seo lapa e lego sona	38
Maloko a lapa la gešo	40
Go hlokomelana ka gae.....	41
A re lekole	43
Sererwa sa 6 Polokego ka gae	44
Kotsi ka lapeng	46
Ditsela tša go bolokega ge o le ka gae	47
Go dula o bolokegile ge o le ka lapeng o le noši.....	48
Karata ya nomoro ya tšhoganetšo	50
A re lekole	51
Sererwa sa 7 Mmele wa ka	52
Ditho tša go fapana tša mmele	54
Ditho tša go fapana tša mmele wa ka tšeo di sepelago	56
Ditho tša mmele wa ka tšeo nka se kgonego go di bona	58
Dikwi tše hlano le mešomo ya tšona	61
A re lekole	63
Sererwa sa 8 Go swara mmele wa ka o bolokegile	64
Maemo le mafelo a go bolokega le a go se bolokege	66
Maikutlo a 'EE' le 'AOWA'	68
Go itlwaetša go re 'aowa'!.....	69
Go šireletša mebele ya rena go malwetši.....	70
Go dira gore meetse a bolokege go ka nwewa.....	71
Matšatši a sedumedi le matšatši a mangwe a go ikgetha.....	72
A re lekole	73
Tliahlobo e rulagantšwego: Kotara ya 2	74

Kotara ya 3

Sererwa sa 9 Setšhaba sa gešo	76
Mafelo setšhabeng sa gešo.....	78
Batho setšhabeng sa gešo.....	80
Go hlokomela didirišwa setšhabeng sa gešo.....	82
Go swara mafelo a hlwekile.....	83
A re lekole.....	85
Sererwa sa 10 Diruiwaratwa	86
Diphoofolo tšeo re di beago bjalo ka diruiwaratwa.....	88
Ka fao o ka hlokomelago diruiwaratwa ka gae.....	90
Go swara diphoofolo gabotse.....	93
A re lekole.....	95
Sererwa sa 11 Mekgwa le maikarabelo	96
Go dumediša batho, re tseba le go dumediša basetsebeje.....	98
Go emela nako ya ka.....	100
Go bontšha go loka.....	101
Go tshepagala.....	103
Go hlompha batho ba bangwe le seo e lego sa bona.....	104
A re lekole.....	105
Sererwa sa 12 Dibjalo le dipeu	106
Lebaka la go dira gore re nyake dibjalo.....	108
Ka fao dibjalo di lebelelegago ka gona.....	110
Dibjalo tša go fapana – tshwano le diphapano.....	112
Dipeu le fao di tšwago gona.....	115
Seo dibjalo di se hlokago gore di gole.....	116
Go bjala sebjalo go tšwa go peu.....	117
A re lekole.....	119
Sererwa sa 13 Dijo	120
Dijo tšeo re di jago.....	122
Fao dijo tša go fapana di tšwago gona.....	123
Go ja tša phepo.....	125
Go boloka dijo.....	128
Matšatši a sedumedi le matšatši a mangwe a go ikgetha.....	130
A re lekole.....	131
Tihahlobo e rulagantšwego: Kotara ya 3	132

Kotara ya 4

Sererwa sa 14 Magae	134
Mehuta ya magae.....	136
Magae a go swanela maemo a go fapana a boso.....	138
Seo magae a go fapana a bopilwego ka sona.....	140
A re lekole.....	143
Sererwa sa 15 Mebepe ya diswantšho	144
Go hwetša mafelo le dilo godimo ga mmepe wa diswantšho.....	146
Go hwetša tsela go tloga lefelong le tee go ya go le lengwe.....	148
Go hwetsa fao ditiragalo tsa ka gare ga kanegelo di diregago gona godimo ga mmepe wa diswantšho.....	150
A re lekole.....	153
Sererwa sa 16 Meetse	154
Mešomo ya meetse ka gae le sekolong.....	156
Ditsela tšeo meetse a senywago ka gona.....	158
Ditsela tša go boloka meetse.....	159
Go nwa meetse a bolokegilego le a sa bolokegago.....	160
Go boloka meetse a go hlweka... ..	162
A re lekole.....	163
Sererwa sa 17 Leratadima bošego	164
Go fetoga go tloga go mosegare go ya go bošego.....	166
Seo leratadima la bošego le swanago le sona.....	168
Ngwedi.....	169
Dinaledi.....	171
Matšatši a sedumedi le matšatši a mangwe a go ikgetha.....	173
A re lekole.....	175
Tihahlobo e rulagantšwego: Kotara ya 4	176
Mantšu a maswa	178

Sererwa sa 1 Mabapi le nna



Ke moswananoši.

Sererwa sa 1 Mabapi le nna

A re thome

1. Naa ke bana ba bakae bao o kgonago go ba bona ka gare ga seswantšho?
2. Naa ba šupile eng?
3. Aa e ka ba ba lebelelega go swana?



Mošongwana wa 1

Šoma ka diphere.



1. Naa ke bana ba bakae ba go ba le meriri ya go tiba?
2. Naa ke bana ba bakae ba go apara bogodimo bjo bošweu?
3. Naa mmala wa gempe yeo e aperwego ke mošemane wa go apara diporele ke wo mobjang?
4. Naa ke bafe ba bana bao ba hlokago leino goba meno?

Dintlha tša bomotho

Mošongwana wa 2



Leina la ka ke Lina. Ke dula 10 Mmila wa Main, Soshanguve. Lehono, ke keteka letšatši la ka la matswalo.



Šoma ka dihlopha.

1. Bolela ka fao Lina a lebelelegago ka gona.
2. Naa Lina o dula kae?
3. Naa mmala wa ntlo ya Lina ke wo mo bjang?



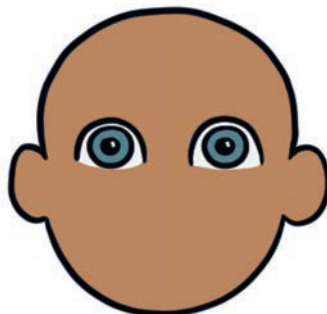
Nako ya go utolla

Thala seswantšho sa gago. Ngwala leina la gago, sefane, mengwaga le aterese.

Re ikgethile ebile re ba moswananoši



Moriri wa ka



Mahlo a ka



Go myemyela ga ka

Ke wa moswananoši. Ke lebelelega go fapana go tšwa go ba lapa la gešo le bagwera.

Mošongwana wa 3

Šoma ka bowena.

1. Ipotše gore: Ke wa moswananoši.
2. Feleletša lefoko le lengwe le le lengwe:
 - a. Ke na le meririr ye _____.
 - b. Ke na le mahlo a _____.
 - c. Ke rata go raloka _____.



letšatši la matswalo – letšatši leo o belegwego ka lona
moswananoši – go ba wa mohuta wo itšego



Dilo tšeo nka di dirago

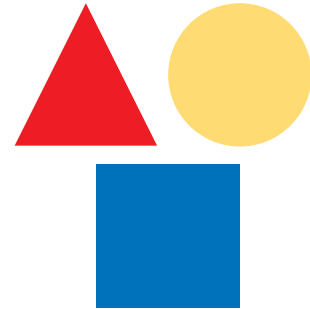
Nka dira dilo tše dintši tša go fapana tšeo di ntirago gore ke kgethege.

1 2 3 4



Ke kgona go balela.

Ke tseba medumo ya go fapana ya diphoofole.

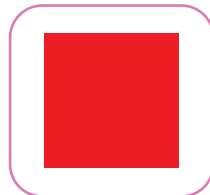
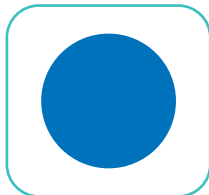


Ke kgona go fa maina a dibopego le mebala.

Mošongwana wa 4

Šoma ka diphere.

1. Aa e ka ba o ka fa maina a dibopego tše le mebala ya tšona?



2. Thala khutlotharo ye tala.

3. Balela go thoma ka tee go fihla ka lesome.

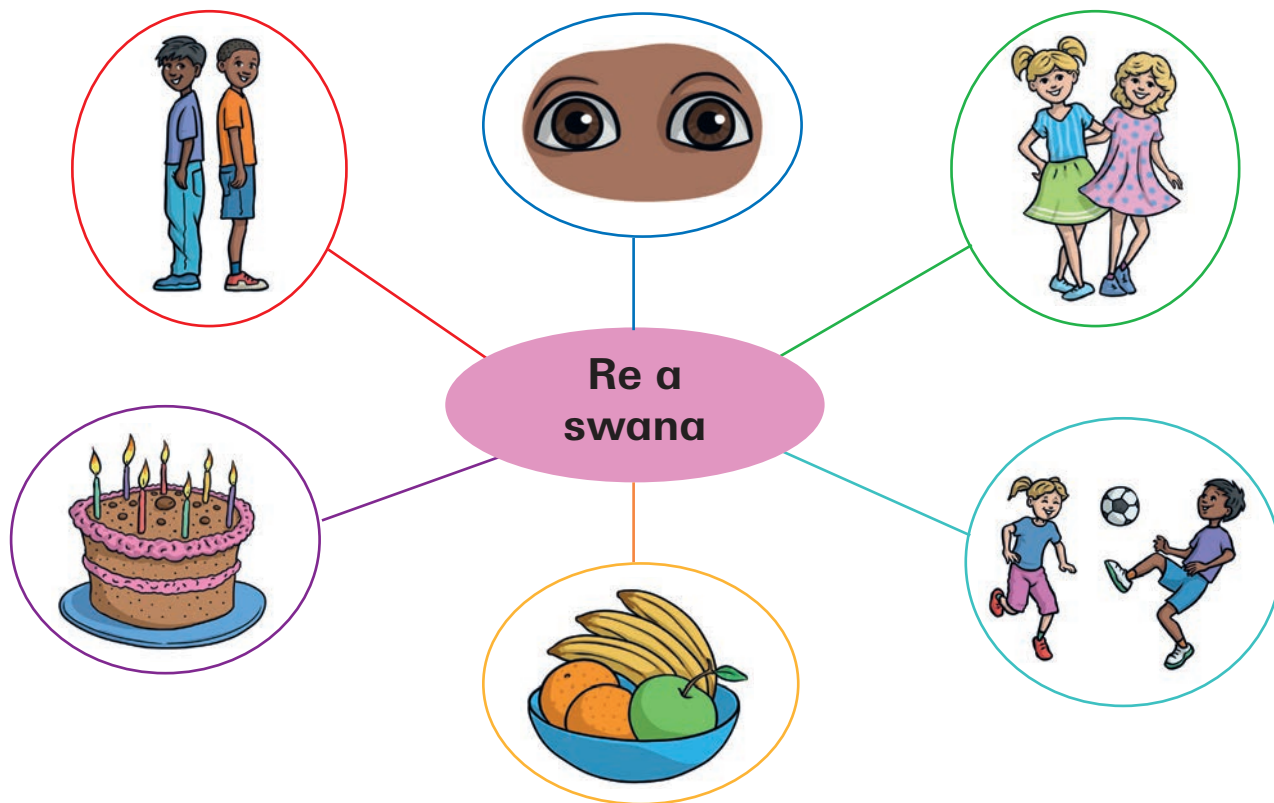


Nako ya go utolla

E fa maina a dilo tše tharo tšeo o kgonago go di dira.

Naa ke swana bjang le bagwera ba ka?

Tše ke dilo tšeo di ka swanago le tša bagwera ba ka.



Mošongwana wa 5

Šoma ka diphere.



1. Naa ke mmala ofe woo bobedi le o ratago?
2. E fa leina la seenywa seo bobedi le se ratago.
3. Naa papadi yeo o e ratago kudu ke efe?
4. Aa e ka ba o ka hwetša motho yo mongwe ka phapošing ya lena yoo a nago le mahlo a mmala wa go swana le a gago?

Naa ke fapana bjang le bagwera ba ka?



Nako ya go utolla

1. Naa ke dilo dife mabapi le bagwera ba babedi ka gare ga seswantšho sa 1 tšeo di swanago?
2. Naa go **fapana eng** magareng ga basetsana ba babedika gare ga seswantšho sa 2?
3. Aa e ka ba bašemane ba babedi ba rata go dira dilo tša go swana?

fapana – nako ye selo se itšego se sa swane
aterese – lefelo fao o dulago gona

Mantšu a maswa

A re lekole

1. Ngwala leina la gago le sefane fase.
2. Naa o na le mengwaga ye me kae?
3. Naa letšatši la gago la matswalo le neng?
4. Naa aterese ya gago ke efe?
4. E fa leina la selo seo o ratago go se dira.
5. Thala seswantšho sa gago le mogwera wa gago.



Sererwa sa 2 Sekolong



Go thoma letšatši la rena sekolong.

A re thome

Lebelela seswantšho.

1. Naa o ka bona eng mo bopeleng bja **moago wa** sekolo?
2. Naa **barutwana** ba dira eng nako ye ba fihla sekolong mesong ye mengwe le ye mengwe?
3. Naa ke nako efe moo o yago sekolong?



Mošongwana wa 1

Šoma ka bowena.

1. Thala wena mong o le ka gare ga yunifomo ya sekolo.
2. Ngwala leina la sekolo sa gago ka fase ga seswantšho.



Nako ya go utolla

Naa ke eng seo o se ratago ka ga sekolo sa gago?

sekolo – fao motho a yago go ithuta
morutwana – motho yoo a yago sekolong
yunifomo – diaparo tša go ikgetha tšeo di aparwago sekolong

Mantšu a maswa

Leina la sekolo, la morutišo le la hlogo ya sekolo

Mošongwana wa 2



Mna Mpho, ke hlogo ya sekolo sa rena. O dumediša ba Mphato wa 1. Morutiši wa rena ke Moh Brown.



Šoma ka dihlopha.

1. Naa **hlogo ya sekolo** ke mang?
2. Naa leina la **morutiši ke mang?**
3. Naa hlogo ya sekolo o dira eng?



Nako ya go utolla

Naa leina la hlogo ya sekolo ke mang?

hlogo ya sekolo – motho yoo a nago le maikarabelo a sekolo

morutiši – motho wa go ikgetha yoo a go thušago go ithuta dilo tše diswa

Mantšu a maswa

Fao o hwetšago mafelo a go fapana ka sekolong



Lepatelelo la dipapadi



Hlogo ya sekolo



Ofisi ya sekolo

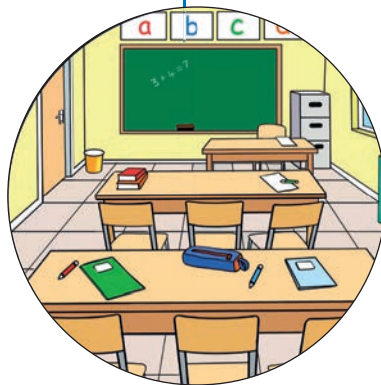


Holo ya sekolo

Sekolo sa ka



Dintlwana tša boithomelo

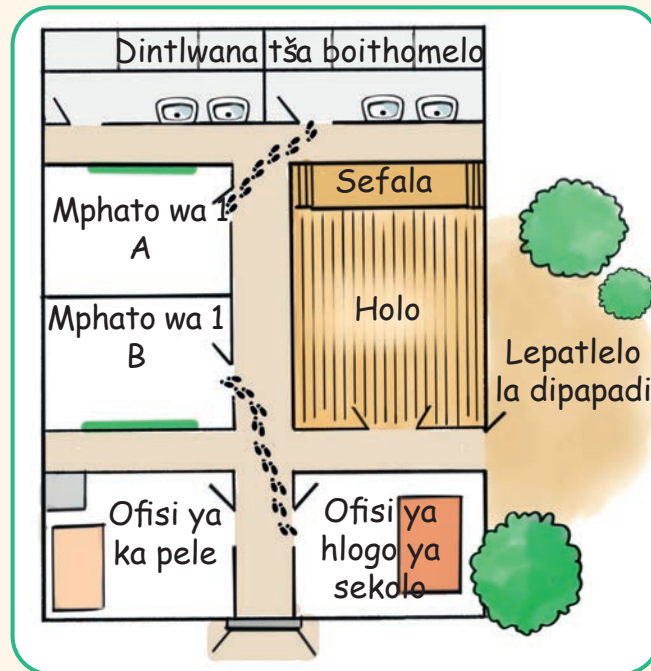


Phapoši ya borutelo



Nako ya go utolla

Lebelela **mmepe** wa sekolo.



Šoma ka dihlopha.

1. Balela dikgato tša go ya ofising ya hlogo ya sekolo.
2. Balela dikgato tša go ya ntlwaneng ya boithomelo.
3. Ngwala dikgato fase.
4. Aa e ka ba o ka fa maina a mafelo ao a hlaelelago ao o nago le wona ka gare ga sekolo sa lena beng?



phapošiborutelo – phapoši fao dithuto di kgathago tema

lepatlelo la dipapadi – sekgoba sa go ralokela ka ntle

Mantšu a maswa

Dikamehla le melao ya ka phapošing ya borutelo



Mošongwana wa 3



Šoma ka diphere.

Lebelela diswantšho mo letlakaleng la 13.

Ka gare ga puku ya go ngwalela, swanelantšha nomoro ya seswantšho le mošongwana.

Sa mathomo o se diretšwe.

- 10 Nako ya ka gae
- Emang ka mothaladi
- Phuthulla mokotlana wa ka
- Nako ya dijo tša mosegare
- Dumediša morutiši wa ka
- Tekeletša mokotlana wa ka
- Pele e a lla
- Nako ya go ya lepatlelong la dipapadi
- Thomang go šoma



Nako ya go utolla

Aa e ka ba phapoši ya gago e na le melao? E fa melao ye **mebedi** ya ka phapošing yeo o hlokago go e latela.

mešongwana

ya ka mehla – go dira selo se itšego ka tsela ya go swana letšatši le lengwe le le lengwe

melao – ka fao motho goba motho yo mongwe a swanetšego go itshwara ka gona.

Mantšu a maswa

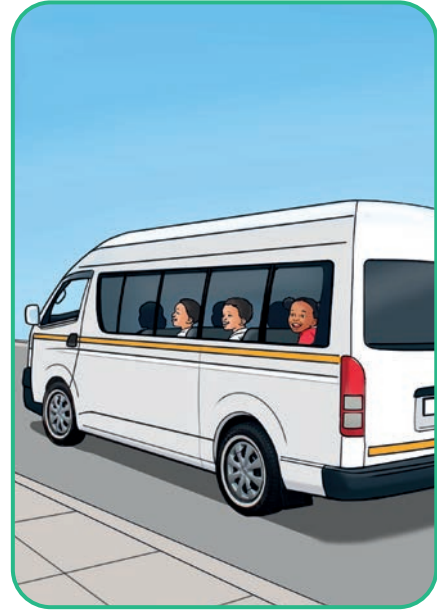
Naa ke ya bjang sekolong?



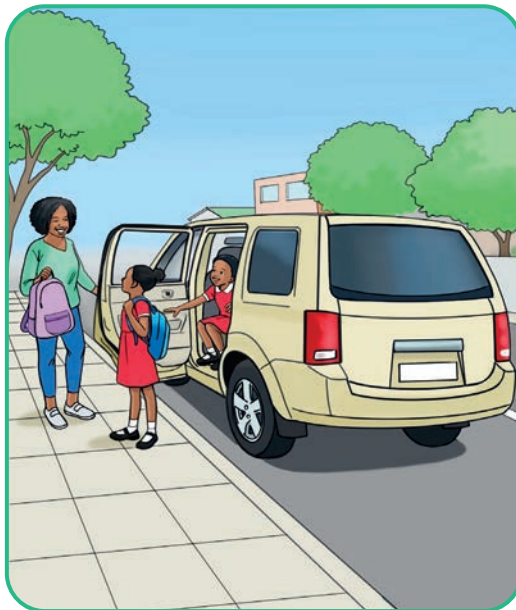
James le Sipho
ba a sepela go ya
sekolong.



Dineo o otlela
paesekela go ya
sekolong.



Frances, Josh
le Kaylee ba ya
sekolong ka thekisi.



Hlonelwa le Buhle ba
tšewa kgopu ka kolo
ya tatago bona.



Abdullah o ya sekolong
ka pase.

Mošongwana wa 4

Šoma ka dihlopha.

Naa bana ba ba ya sekolong bjang?

1. Hlonelwa le Buhle

2. Abdullah

3. Sipho le James

4. Dineo

5. Frances, Josh le Kaylee



**Nako ya
go utolla**

1. Naa o ya sekolong bjang?

2. Aa e ka ba go na le ditsela tše dingwe tšeo bana ba yago sekolong ka tšona?

A re lekole



Šoma ka bowena.

Feleletša mafoko.

1. Ke ya sekolong ka _____.
2. Leina la hlogo ya sekolo sa ka ke _____.
3. Leina la morutiši wa ka ke _____.
4. Senamelwa seo ke se šomišago go ya sekolong ke _____.

Araba ka Ee goba Aowa.

1. Ke kgona go hwetša tsela ya ka ya go ya sekolong.
2. Ke tseba fao lepatlelo la dipapadi le lego gona.
3. Ofisi ya hlogo ya sekolo e kgole le phapoši ya ka ya borutelo.
4. Dintlwana tša boithomelo di kgauswi le phapoši ya ka ya borutelo?
5. Sekolo sa gešo se na le bokgobapuku



Sererwa sa 3 Ditlwaedi tše dibotse



Lephelelo le lebotse.

A re thome

Ditlwaedi **tše dibotse** di loketše mmele wa gago. Ke:

Go ja dijo
tša phepo

Go hwetša
boroko bja
go lekana

Go
itšhidulla

Go swara
mebele ya rena
e hlwekile

Mošongwana wa 1

Šoma ka dihlopha.

1. Naa ke ka lebaka la eng re swanetše go hlapa meno a rena letšatši le lengwe le le lengwe?
2. Lebelela diswantšho. Naa ke setlwaedi sefe se sebotse seo re se dirago letšatši le lengwe le le lengwe?



**Nako ya
go utolla**

Naa ke ka lebaka la eng go robala e le setlwaedi se bohlokwa sa maphelo?

setlwaedi – selo se itšego seo o se dirago letšatši le lengwe le le lengwe

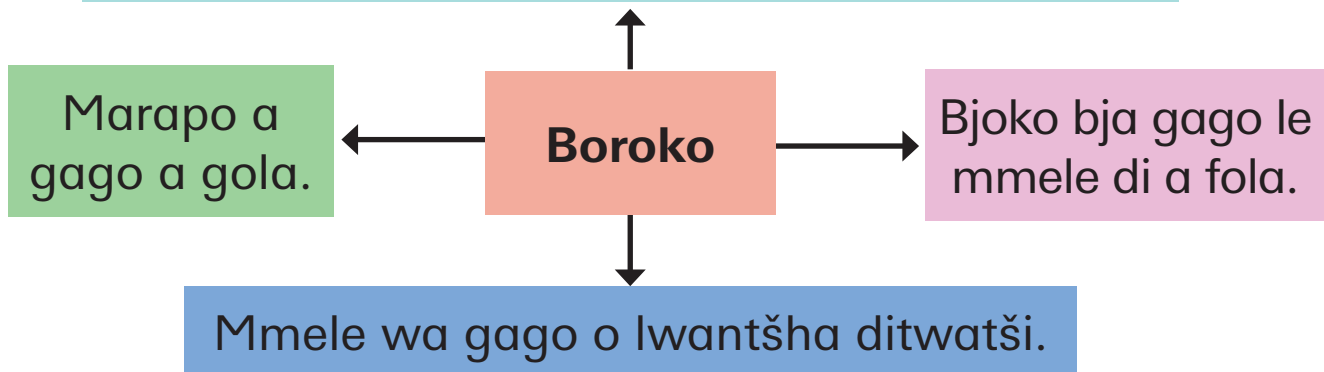
lephelelo – ka fao o phelago ka gona

**Mantšu a
maswa**

Boroko

Boroko bo bohlokwa kudu go mebele ya rena ka lebaka la gore:

O na le maatla a mantši nakong ya mosegare.

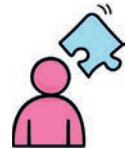


Go ba le boroko bjo bobotse bošego, o swanetše go ba malaong ka iri ya seswai.

Mošongwana wa 2

Šoma ka bowena.

1. Thala seswantšho sa gago o robetše.
2. Ngwala seo o naganago gore se diragalela mmele wa gago mola o robetše.



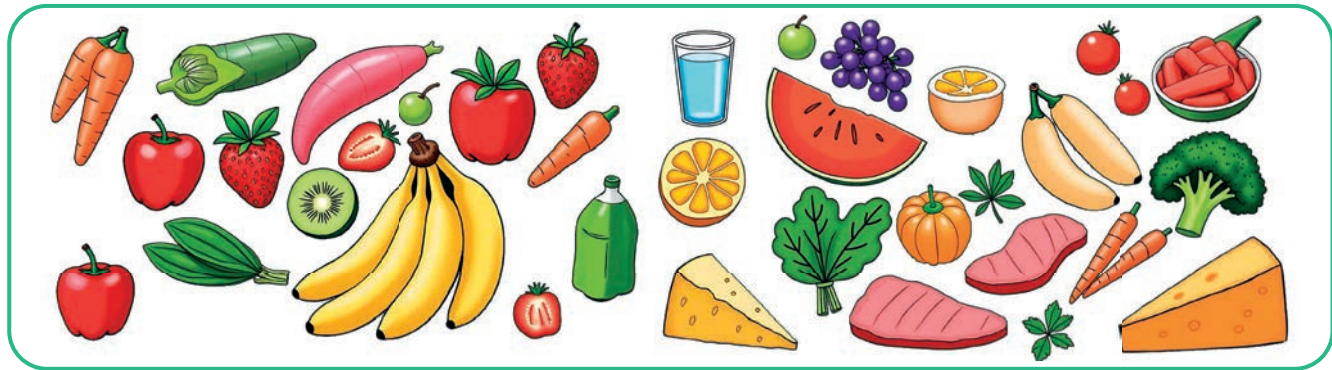
ditwatši – dilo tše dinyane tša go phela tšeo re sa kgonego go di bona. Di kgona go lokela mebele ya rena e bile gape di kgona go re lwatša.

Lentšu
le leswa

Go ja dijo tša phepo

Go ja dijo tša phepo go go thuša go gola ka go tia.

Dijo tša phepo di akaretša dienywa, dinama le merogo.



Mošongwana wa 3

Šoma ka dihlopha.



1. Dira phousetara ya dijo o bontšha dijo ka moka tša phepo le digwaiši tšeo o di tsebago.
2. O ka thala diswantšho goba wa di ripa go tšwa ka kuranteng goba dimakatsineng gomme wa di kgomaretša ka gare ga phousetara ya gago.
3. Bontšha badirišane ba gago ba ka phapošing phousetara ya gago.



**Nako ya
go utolla**

E fa dienywa le merogo ka moka yeo o e tsebago.

Tšhomišo ya maleba ya ntlwana ya boithomelo

E ka ba re le ka gae goba re le sekolong, re swanelwa ke go abelana ntlwana ya boithomelo le batho ba bangwe. Go bohlokwa gore o ithute ditlwaedi tše dibotse tša ntlwana ya boithomelo.



Dula o tlogela lefelo la ntlwana ya boithomelo le hlwekile ka morago ga go le šomiša.



O se ke wa senya pampiri ya ntlwana ya boithomelo.



Dula o hlapa diatla tša gago ka morago ga go šomiša ntlwana ya boithomelo.



Nako ya go utolla

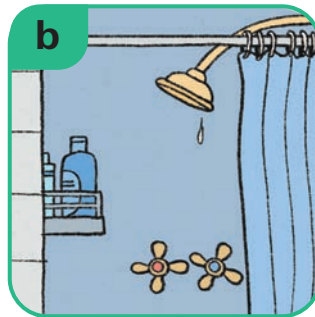
Ge eba ntlwana ya boithomelo ga se e hlweke, naa o swanetše go dira eng?

Gopola go:

foliša ntlwana ya boithomelo ka morago ga go e šomiša gomme o tswalele thephe ka morago ga ge o feditše go hlapa diatla tša gago.

Go e swara e hlwekile

Re swara mebele ya rena e hlwekile ka go dira dilo tše:



Mošongwana wa 4

Šoma ka diphere.



1. Boleleng mabapi le seo se diregago ka gare ga seswantšho.
2. Naa o swara mmele wa gago o hlwekile bjang?
3. Naa o poratšha meno a gago neng?
4. Naa ke ka lebaka la eng go le bohlokwa go swara mebele ya rena e hlwekile?

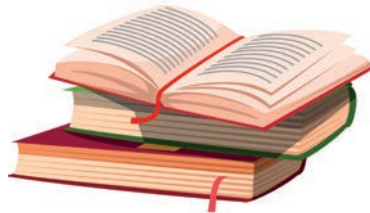
Go itšhidulla nako le nako le go raloka

Swara mmele wa gago gabotse ka go itšhidulla le go raloka.

Mo ke ditsela tše dingwe tšeo ka tšona re ralokago le **go itšhidulla**:



Go raloka dipapadi



Go bala dipuku



Go dira bokgabo

Mošongwana wa 5

Šoma ka diphere.



1. Naa ke boitšhidullo bofe bjoo o ratago go bo dira?
2. Naa ke makga a makae ka beke fao o itšhidullago?
3. Naa ke papadi efe yeo o e dirago sekolong?



Nako ya go utolla

Aa e ka ba go hlalela thelebišene ka dinako ka moka ke setlwaedi se sebotse?

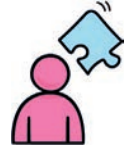
itšhidulla

– ditiragalo tšeo o di dirago go swara mmele wa gago gabotse

Lentšu le leswa

A re lekole

Šoma ka bowena.



1. Thala ditlwaedi ka moka tše dibotse tše o ka di dirago mesong pele o e ya sekolong.
2. Naa ke ditlwaedi dife tše bohlokwa go ka di dira mola o sa le sekolong?
3. Nako ye ke hlapa diatla tša ka goba ke poratšha meno a ka ke swanetše go tima _____.



Sererwa sa 4 Boso



A re thome

Lebelelela go diswantšho tše tharo.

1. Naa ke mohuta ofe wa **boso** woo o bonago ka gare ga seswantšho se sengwe le se sengwe?
2. Naa ke diaparo dife tšeo o swanetšgo go de apara ge pula e na?
3. Naa o ikwa bjang ge go fiša?
4. Naa o ikwa bjang ge go tonya?



Nako ya go utolla

E ya ka ntle.

1. Naa boso bo bjang?
2. Thala seo o se bonago.

boso – go fiša bjang, go tonya bjang, moya o tšutla bjang, pula e bjang, kgudi e bjang goba maru a bjang ka ntle?

Lentšu
le leswa

Tšhathe ya letšatši le letšatši ya boso

Mošongwana wa 1

Tšhathe ya Letšatši le Letšatši ya Boso



Šoma ka bowena.

1. Lebelela tšhathe ya boso bja letšatši le letšatši. Bolela mabapi le boso bjoo o bo bonago.
2. Thala tšhathe ya boso bja gago bja letšatši le letšatši o bontšha letšatši, pula, phefo le maru.





Nako ya go utolla

A re ralokeng tša mabelo a ka meetseng.

Hlomang mothaladi gomme le tšhabelane kgahlanong le bagwera ba lena.

Sebakeng sa go kitima, akanyang le fofela ka gare ga meetse go fihla mothalong wa go fetša.

Mofofi wa lebelo le legolo go feta la ba bangwe ka moka wa ka meetseng o thopa sefoka!



Boso le rena

Maikhutšo a Yonela a marega

Yonela o thabile kudu. O tla be a etetše Drakensberg la mathomo go tla go raloka ka gare ga lehlwa le mmagwe le buti wa gagwe, Enathi.

Ka gare ga mokotlana wa gagwe, o phuthetše ditlelafo tša gagwe, baki ye phinki, disokisi tša dikoto le diputse tša borutho. Morago ga go otlela go telele, ba fihlile go dithaba tša lehlwa tša Drakensberg. Mmagwe o gogile kolo ka potlako gomme Yonela le Enathi ba fologa ka lebelo. Yonela a topa lehlwa la go tlala legoswi gomme a goeletša ka makalo, “Ooo, lehlwa le tloga le tonya! Lebelela mma, le thapiša ditlelafo tša ka!”



Mošongwana wa 2

Theeletša kanegelo ya maikhutšo a Yonela a marega gomme o arabe dipotšišo.

Šoma ka diphere.



1. Bolela mabapi le seo o ratago go se ja le go se nwa ka letšatši la go tonya.
2. Naa o apara diaparo tše di bjang ka matšatši a go tonya.



Nako ya go utolla

A re direng mongatse wa lehlwa.
Morutiši wa gago o tla go thuša.

O tla hloka:

- pampiri
- leokodi
- patlana ya sekgomaretši
- kherayone.



Mongatse wa lehlwa o dirilwe ka pampiri le leokodi

Matšatši a sedumedi le matšatši a mangwe a go ikgetha

Tameem, naa ke ka lebaka la eng o sa je dijo dife goba dife tša mosegare?



Ke ikona dijo lehono, Mpho.

Naa go ikona ke eng?

Go lokile, ka sedumedi sa gešo re ikona ka nako ya Ramadan. Ga re je nakong ya mosegare.

Seo se botse go se tseba. Naa le ja neng gape?



Re ja nako ye letšatši le dikela.

Ke ya go leboga ge o nthutile mabapi le go ikona, Tameem!



Nako ya go utolla

Šoma ka diphere.



1. Aa o ka fa sedumedi se tee sa ka mo gare ga kanegelo?
2. Aa e ka ba o tseba ka bodumedi bofe goba bofe bjo bongwe?

A re lekole

Thuša Peter go fola

Šoma ka diphere.

Peter o kwa go fiša. O hloka go fola.


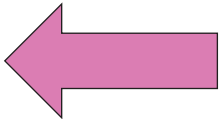
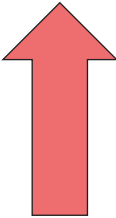

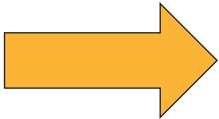
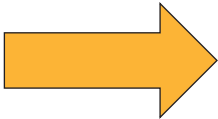
Thuša Peter gore a fihle go asekherime.

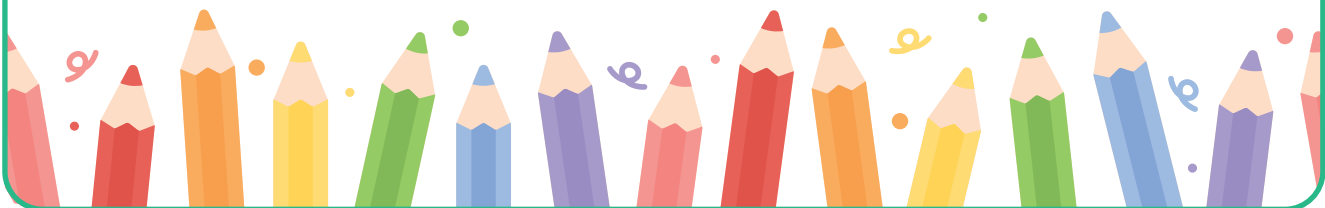
Šupa asekherime.

Šupa Peter.

Peter o nyaka go ya go asekherime. Latelela mesebe ka monwana wa gago gore o fihle go asekherime.



 <p>Fetša</p>		
 <p>Thoma</p>		



Tlhahlobo e rulagantšwego: Kotara ya 1



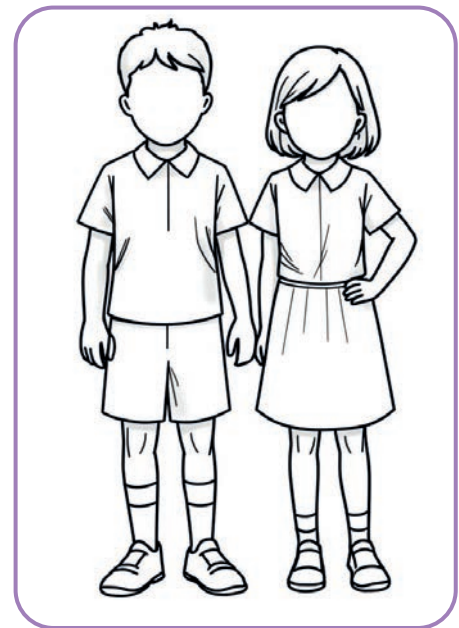
Potšišo ya 1

1. Thala seswantšho sa gago wena mong gomme o arabe dipotšišo tše.
2. Araba dipotšišo tše
 - a. Naa leina la gago ke mang?
 - b. Naa sefane sa gago ke sefe?
 - c. Naa o na le mengwaga ye me kae?
 - d. Naa o dula kae?
 - e. Naa letšatši la gago la matswalo le neng?
 - f. Kgetha mmala woo wena o ratago kudu:
 - g. Naa mahlo a gago ke a mmala ofe?



Potšišo ya 2

1. Thala wena mong o apere yunifomo ya sekolo gomme o arabe dipotšišo tše.
 - a. Ngwala leina la sekolo sa lena fase.
 - b. Ngwala leina la morutiši wa lena fase.
 - c. Naa leina la hlogo ya sekolo sa geno ke mang?



Potšišo ya 3

1. Naa ke ka lebaka la eng re swanetše go ba le ditlwaedi tše dibotse?
2. Bolela mabapi le ka fao o swanetšego go hlapa diatla tša gago.



Potšišo ya 4

1. Thala dilo tše tharo tšeo o ka di jago goba wa di nwa mo letšatšing la go fiša.
2. Ngwala diaparo tšeo o ka di aparago ka go boso bja go tonya ka gare ga puku ya gago ya go ngwalela.



Sererwa sa 5 Lapa la gešo

