



# Platinum

## Mabokgoni a Bophelo

T. Barnard • C. De Vries • S. Adams • L. Shaw • C. Gleeson-Baird

Platinum Mabokgoni a Bophelo Mphato wa 2 Puku ya Moithuti

Maskew Miller Learning  
10 Freedom Way, Milnerton, Cape Town, 7441

© Maskew Miller Learning (Pty) Ltd 2025

Ditokelo tšohle di šireleditšwe. Ga go karolo ya phatlalatšo ye, yeo e kago tšweletšwa, go bolokwa ka mokgwa wa go ntšha, goba go fetošwa ka mokgwa goba sebopego sefe goba sefe (elektroniki, semotšhene, go fotokopa, go gatišwa goba ka mokgwa wo mongwe) ntle le tumelelo ya go ngwalwa pele ya mong wa tokelo ya ngwalollo.

Go kgopela tumelelo ya go tšweletša lefsa goba go fetola karolo ye nngwe ya phatlalatšo ye, o kgopelwa gore o ikopanye le ba lefapha la Ditokelo le Ditumelelo mo go 021 532 6000 goba romela e-meile go [rightsgranting@mml.co.za](mailto:rightsgranting@mml.co.za). Go bega tshelo ya molao wa tokelo ya ngwalollo, re kgopela o romele imeile go [copyright@mml.co.za](mailto:copyright@mml.co.za)  
E gatišitšwe la X ka 20XX

ISBN 978-1-779-83531-4  
EPDF ISBN 978-1-779-89566-0

Mophatlalatši Anusia Naicker-David  
Morulaganyimogolo Ru Bailey  
E rulagantšwe ke Dr. P.S Nkomo  
Tlhamo ya khabara ka MML Visual Design  
Seswantšho sa khabara ka MML Visual Design  
Peakanyo ya puku ka MML Visual Design  
Diswantšho ka Chamique Johnson, MML Visual Design, Danielle Albertyn, Dolph Banza, Angie Bowring, Stellah Irungu, Bennie Kruger, Ronell Lareman, Patrick Latimer, Amos Ndinyo, Lauriane Neave, Lindsey van Heerden & Bev Victor  
Tšweletšo ka Olivia Brink  
E gatišitšwe ke

### Ditebogo

Bangwadi le mophatlalatši ba leboga tumelelo ya go šomiša diswantšho:

p2, happylark / 123RF; p3a, anaumenko / 123RF; p3b, rastkobelic / 123RF; p3c, marctran / 123RF; p7b, olyasolodenko / 123RF; p20d, prostooleh / 123RF; 83a, Stuart Boulton / Alamy Stock Photo; p86a-b, grgroup / 123RF; p151b, ruslan / 123RF; p155, Chronicle / Alamy Stock Photo; p166a, vanreeel / 123RF; p166b, djvstock / 123RF;

### Shutterstock

p0b, Andrew Williams; p20b, santypan; p20c, Halfpoint; p21, New Africa; p24a, Motortion Films; p24b, didesign021; p24c, Roman Chazov; p24d, Halfpoint; p26, DG FotoStock; p28, Colorfuel Studio; 29a, Teguh Mujiono; 29b, Colorfuel Studio; p30, THP Creative; p34a, Spreadthesign; 34b, sciencepics; p37a, Aonprom Photo; p37b, Cullen Macias; p37c, s.r graphics; p42, Milya Shaykh; p46a, kapichka; p46b, ShineTerra; p46c, WESTOCK PRODUCTIONS; p46d, wavebreakmedia; p52a, THMorningMonday; p52b, Aninka Bongers-Sutherland; p52c, star dezipner; p52d, baibaz; p53a, Audrius Merfeldas; p53b, Casther; 53c, gorillaimages; p54, Kazakova Maryia; p55a, Serenity Images23; p55b, Terelyuk; p55c, PJ photography; p55d, Donna Bollenbach; p56a, patjo; p56b, Saley Yanny; 60a, acceptphoto; 60b, Animaflora PicsStock; 60c, Ramon Cliff; p60d, Courtney Jenckes; p60e, Emile E Wendling; p62a, Anna Hoychuk; p62b, New Africa; p62c, Nitr; p63a, VLADIMIR VK; p63b, Sergey Moskvitin; p63c, Loren Maring; p64, Volodymyr Burdiak; p66a, MPH Photos; p66b, Artush; p67, Jordan\_Abroad; p72, puyalroyo; p78a, Benerys; p78b, Martin Blazicek; p78c, Oleksandr Smushko; p78d, nicemyphoto; p78e, Ryan Bemben; p78f, Vladimir Turkenich; p79a, Hannes Thirion; p79b, Siahay Photo Corner; p79c, Roberto\_Rossi; p80a, Platoo Studiov; p80b, Umomos; p80c, EiHeyYee; p80d, Azay photography; p80e, Emaruchi; p82, Zviozdochka; 83b, Olga Listopad; 83c, Marianne Pfeil; p85, Eric Isselee; p86c, Will Power Studio; 91a, Platoo Studiov; p91b, Hannes Thirion; p91c, Umomos; p91d, Ryan Bemben; p92, MPH Photos; p96a, imstock; p96b, loesak pakdeeto; p96c, kram-9; p103, kram-9; p107a, Abraham Overvoorde; p107b, Denis Belitsky; p109a, Pedal to the Stock; p109b, Mny-Jhee; 109c, Foto-up; p109d, Aerial-motion; p111a, Waldemar Manfred Seehagen; p111b, artmanul; p111c, Aleksandr Merkushev; p111d, NAN728; p112a, gpointstudio; p112b, freevideophotoagency; p121a, Techzila; p121b, Millionstock; p136, Silver Spiral Arts; p140a, Aoraee; p140b, luma\_art; p142, Rainer Lesniewski; p146a, Grobler du Preez; p146b, Grobler du Preez; p146c, Jurie Maree; p146d, Serah Polito; p146e, EcoPrint; p151a, H\_Ko; p151c, yana\_vinnikova; p151d, gcafotografia; p151e, New Africa; p156, Andrii\_Malysh; p159a, RS-74; p159b, Red Confidential; p159c, La Gorda; p163a, Africa Studio; p163c, Kamonkanok; p163d, diplomedia; p163e, Ground Picture; p171, Alina Machado; p172a, IndianFaces; p172b, New Africa; p172c, Roman Samborskyi; p173, katsuba\_art; p176a, Worraket; p176b, Smit; p176c, tratong; p176d, Veronica Rentoul; p177, TigerStocks; p178a, StockImageFactory.com; p178b, phive; p178c, Indian Food Images; p178d, NIKS ADS;

# Re a go amogela mo go Leeto la rena la go Ithuta



Re a go amogela pukung ye ya go kgahliša ya morutwana! O tlo tsebana le baanegwa ba go kgahliša kudu; go fo swana le ge moanegwa yo mongwe le yo mongwe a kgethegile ka tsela ya gagwe, go bjalo le ka wena!



Thabo



Tuck Shop Lady



Lily



Sahil



Tebogo



Amina



Zara



Lulama



Lina



Aiden



Khaya

O tlo hwetša dilo tše di latelago ka pukung ya gago ya go ithuta, tše di tla go hlalago leetong la go thabiša la go tlala ka go ithuta le go utulla dilo tše diswa.

**A re thome:** Thutwana ye nngwe le ye nngwe e thoma ka tshedimošo ya bohlokwa ye o tlogo go ithuta ka yona.

**Nako ya go utolla:** Ye ke mešongwana ya go thabiša ya go hlohletša go ithuta dilo tše diswa, dintlha tša go kgahliša le go rarolla diphasele.

**Mantšu a maswa:** Ithute mantšu a maswa ao a tlogo thušago go godiša tlotlontšu ya gago.

**A re lekole:** Mafelelong a thutwana ye nngwe le ye nngwe, dira mešongwana ye gore o ikgantšhe ka dilo tše dintši tše o ithutilego tšona!

**Tlhahlobo ye e rulagantšwego:** Tlhahlobo ye e tla go thuša go bona ge e ba o kwešišitše gabotse dilo ka moka tše o di rutilwego kotareng ka moka.

Puku ye e tla go thuša go šoma o le tee, le ka dihlopha. Le tlo opela, la bina le go ithuta mmogo. Netefatša gore o lokišetša thuto ye nngwe le ye nngwe ebile o ka botšiša morutiši wa gago dipotšišo tše dintši ka mokgwa wo o ka kgonago.

Itokišetše go ithuta, go raloka le go hlama dilo le bagwera ba gago.

Ipshine ka go ithuta.

# Dikagare

## Kotara ya 1

<b>Sererwa sa 1</b>	<b>Seo re se hlokago gore re phele... 1</b>
	Dijo tša kgolo, maatla le maphelo ..... 2–3
	Ke ka baka la eng re nyaka meetse? ..... 4
	Moya wo o hlwekilego ..... 5
	Seetša sa letšatši ..... 6
	A re lekole ..... 7
<b>Sererwa sa 2</b>	<b>Nna le bagwera ..... 8</b>
	Ke eng seo se dirago gore motho a be mogwera yo mobotse? ..... 10–12
	Batho sekolong le ka gae.... 13
	Go bontšha tlhomphe le go thuša ba bangwe ..... 14–16
	Go kgoa le go ipona ga rena ..... 17–18
	A re lekole ..... 19
<b>Sererwa sa 3</b>	<b>Motho yo mongwe le yo mongwe o kgethegile ..... 20</b>
	Batho ba a swana ebile batho ba a fapana ..... 22–23
	Dilo tšeo di thušago batho ..... 24–25
	Go hlokomela bagolofadi 26–27
	Nka ba mogale ..... 28–30
	A re lekole ..... 31
<b>Sererwa sa 4</b>	<b>Bophelo bja go dula o phetše gabotse ..... 32</b>
	Tsela ya go dula o phetše gabotse ..... 34–35
	Ke eng seo se re dirago gore re se phele gabotse? ..... 36
	Dilo tšeo di re gobatšago .... 37
	Go šireletša dijo tšeo re di jago ..... 38
	Ditsela tše bonolo tša go hlwekiša meetse ..... 39–40
	Matšatši a bodumedi le matšatši a maikhutšo a go ikgetha ..... 41–42
	A re lekole ..... 43

**Tlhahlobo ye e rulagantšwego**  
**Kotara ya 1 ..... 44–45**

## Kotara ya 2

<b>Sererwa sa 5</b>	<b>Dihla ..... 46</b>
	Dihla tše nne ..... 48–49
	Ka moo dihla di re amago ka gona ..... 50–52
	Ka moo dihla di amago dilo tše di golago ..... 53
	Saekele ya bophelo bja sebjalo sa nawa ..... 54
	Ka moo dihla di amago diphoofolo ..... 55–56
	A re lekole ..... 57
<b>Sererwa sa 6</b>	<b>Diphoofolo ..... 58</b>
	Diphoofolo tša polase ... 60–61
	Tšhomišo ya diphoofolo tša polaseng ..... 62–63
	Diphoofolo tša naga ..... 64–65
	Diphoofolo tše di iphihlago . 66
	Diphoofolo tše di lego kotsing ..... 67–68
	A re lekole ..... 69
<b>Sererwa sa 7</b>	<b>Dibopiwa tšeo di phelago ka meetseng ..... 70</b>
	Seo se phelago ka meetseng a hlwekilego ..... 70–74
	Ke eng seo se phelago ka meetseng a letswai? ..... 75–76
	A re lekole ..... 77
<b>Sererwa sa 8</b>	<b>Magae a diphoofolo ..... 78</b>
	Diphoofolo tšeo di dirago legae la tšona ..... 80–82
	Diphoofolo tšeo di hwetšago magae a tšona ..... 83–84
	Diphoofolo tšeo di rwalago magae a tšona ..... 85–88
	Matšatši a bodumedi le matšatši a mangwe a kgethegilego ..... 89–90
	A re lekole ..... 91

**Tlhahlobo ye e rulagantšwego**  
**Kotara ya 2 ..... 92–93**

## Kotara ya 3

<b>Sererwa sa 9</b>	<b>Mabu</b> .....	<b>94</b>
	Mehuta ya mabu.....	96
	Dibopiwa tšeo di phelago ka gare ga mabu.....	97–98
	Mabu a kgodišo ya dimela.....	99–102
	A re lekole.....	103
<b>Sererwa sa 10</b>	<b>Dinamelwa</b> .....	<b>104</b>
	Dinamelwa ke eng? .....	106
	Dinamelwa tša seporo	107–108
	Dinamelwa tša sefofane.....	108–110
	Dinamelwa tša meetse.	111–112
	Ditšhomišo tša mehuta ye e fapanego ya dinamelwa.....	113–114
	A re lekole.....	115
<b>Sererwa sa 11</b>	<b>Polokego ya Ditseleng</b> .....	<b>116</b>
	Polokego ya tseleng ya basepedi ba maoto .....	118
	Polokego ya tseleng ya baotledi ba paesekele .....	119
	Polokego ya tseleng ya banamedi .....	120
	Maswao a tsela a basepedi ba maoto le baotledi ba paesekele.....	121–122
	Lenaneo la polokego ya baitnuti .....	123
	Balaodi ba sephethephethe ba re thuša bjang .....	124–126
	A re lekole.....	127
<b>Sererwa sa 12</b>	<b>Batho bao ba re thušago</b> .....	<b>128</b>
	Batho ba go fapana ba nthuša bjang .....	132–133
	Ke kgopela tshedimošo le thušo bjang .....	134
	Tsela ya go kgopela thušo ge o le mathateng .....	135
	Matšatši a bodumedi le a go ikgetha.....	136
	A re lekole.....	137

<b>Tlhahlobo ye e rulagantšwego Kotara ya 3</b> .....	<b>138–139</b>
---	----------------

## Kotara ya 4

<b>Sererwa sa 13</b>	<b>Naga ya rena</b> .....	<b>140</b>
	Mmepe wa Afrika Borwa .....	142–143
	Folaga ya Afrika Borwa le moo re ka e bonang .....	144
	Koša ya setšhaba ya Afrika Borwa .....	145
	Maswao a bosetšhaba a Afrika Borwa .....	146
	A re lekole.....	147
<b>Sererwa sa 14</b>	<b>Ditsela tša go fapana tša go bolela</b> .....	<b>148</b>
	Go bolela go boledišana .....	150–154
	Go bala go boledišana .....	155–156
	Go šomiša papatšo go boledišana .....	157
	Go theeletša tshedimošo .....	158–162
	Bohlokwa bja poledišano .....	163–164
	A re lekole.....	165
<b>Sererwa sa 15</b>	<b>Mosegare le bošego</b> .....	<b>166</b>
	Dilo tšeo ke di dirago bošego.....	168–171
	Batho bao ba šomago bošego.....	172–175
	Diphoofolo tša go sela bošego.....	176–177
	Matšatši a bodumedi le a mangwe a go kgethega ....	178
	A re lekole.....	179

<b>Tlhahlobo ye e rulagantšwego Kotara ya 4</b> .....	<b>180–181</b>
---	----------------

<b>Lentšu le leswa</b> .....	<b>182–185</b>
------------------------------	----------------

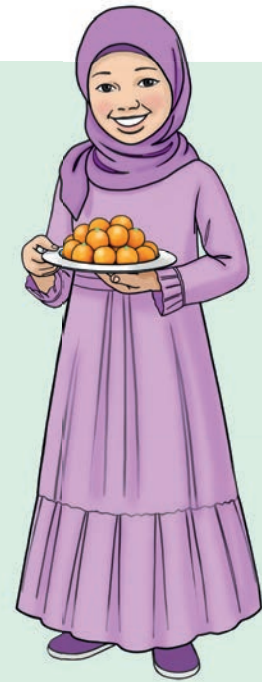
# Sererwa sa 1 Seo re se hlokago gore re phele



Sererwa sa 1 Seo re se hlokago gore re phele

## A re thome

1. Ke dijo dife tšeo o di ratago kudu?
2. Naa dijo tše ke tša go phediša goba ga di phediše?
3. Naa o thabela go raloka ka ntle?
4. Ke dipapadi dife tšeo o thabelago go di raloka?



Mantšu a maswa

**bophelo bjo bobotse** – dilo tšeo di bolokago mebele ya rena gore e tie

**go se phele gabotse** – dilo tšeo di lwatšago mebele ya rena

## Dijo tša kgolo, maatla le maphelo



### Mošongwana wa 1



Sahil o reka dimonamone, ditšhipsi le phae thakešopong ya sekolo.

Šoma ka diphere.

1. Ke eng seo se re fago maatla?
2. Sahil a ka dira eng, gore a hwetše maatla a oketšegilego?
3. O nagana gore ke ka baka la eng Sahil a lapa?

**maatla** – seo re se hlokago gore mebele ya rena e kgone go dira mošomo goba go raloka dipapadi

Lentsu le leswa

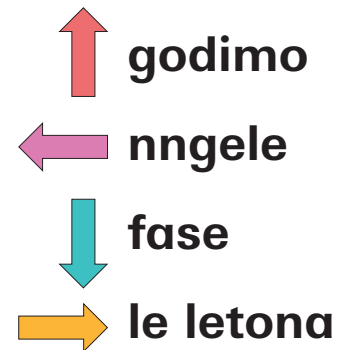
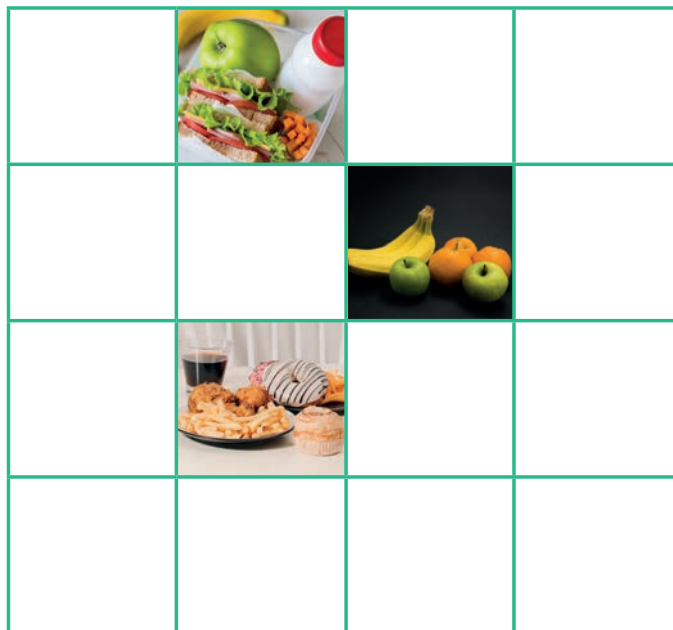
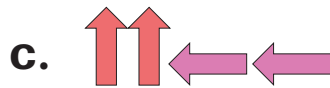
## Mošongwana wa 2



Šoma ka bowena

Sahil a ka sepela boloko e tee ka nako. O kgona go ya godimo, ka go ngele, fase le ka go le letona. Thoma mo khutlotharong ye serolane.

Latela sete e nngwe le e nngwe ya mesebe gomme o bone moo e išago Sahil.



## Ke ka baka la eng re nyaka meetse?

### Mošongwana wa 3



Šoma ka bowena

1. Dira lenaneo la ditsela ka moka tšeo Mbali a šomišago meetse ka tšona.
2. Ngwala ditsela tše dingwe tše pedi tšeo re šomišago meetse ka tšona.



### Nako ya go utolla

Šoma ka diphere.

Meetse a tšwa kae?

1. Dira phoustara yeo e bontšhago mafelo a mahlano ao re hwetšago meetse go ona.
2. Diriša dipuku le inthanete go go thuša.
3. Botša phapoši seo o ithutilego sona.

## Moya o hlwekilego

Batho ba nyaka moya o hlwekilego gore ba phele. Ka ntle le moya o hlwekilego batho ba be ba tla lwala.



### Mošongwana wa 4



Šoma ka diphere

1. Go direga eng ka gare ga seswantšho se sengwe le se sengwe?
2. Ke ka baka la eng mošemane a swere nko?
3. Ke ka baka la eng o nyaka moya o hlwekilego?
5. Naa o nagana gore dimela le diphoofole di nyaka moya wo o hlwekilego? Ke ka lebaka la eng?

# Seetša sa letšatši

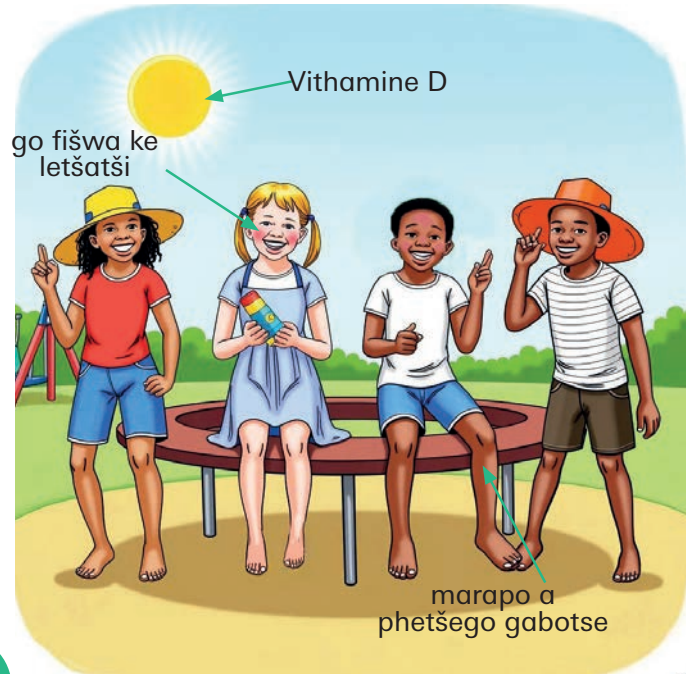
go fišwa ke

**letšatši** – letlalo

le bohloko leo le hlolwago ke nako ye ntši kudu letšatšing

**šireletša** – go boloka motho goba selo se sengwe

Mantšu a maswa



## Mošongwana wa 5

Šoma ka bowena

Lebelela seswantšho gomme o bale dileibole.

1. Ke ka baka la eng letšatši le re loketše?

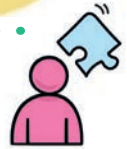
Thoma lefoko la gago ka: Letšatši le re loketše ka gobane \_\_\_\_\_.

2. Ke ka baka la eng letšatši le ka ba le lebe go rena?

Thoma lefoko la gago ka: Letšatši le ka ba le lebe go rena ge \_\_\_\_\_.

3. O swanetše go šireletša letlalo la gago bjang letšatšing?

Thoma lefoko la gago ka: Ke swanetše go šireletša letlalo la ka letšatšing ka \_\_\_\_\_.



## A re lekole

1. Ke lepokisi lefe la matena leo le phedišago?



2. Kgetha lentšu le le nepagetšego lefokong:

Re swanetše go šomiša (**meetse/ thibelaletšatši**) letlalong la rena ge re ya letšatšing.

3. Naa lefoko le **le nepagetše** goba **le fošagetše**?

Mušišo wa dikoloi o thuša diphoofolo, dimela le batho go hema moya wo o hlwekilego.

4. Thala seswantšho sa ka fao o šomišago meetse ka gae.



# Sererwa sa 2 Nna le bagwera



## A re thome

Šoma ka diphere

1. Re ka ba botho bjang go batho ba bangwe?
2. O homotša bjang mogwera wa gago yo a ikwago a nyamile?
3. Ngwala dilo tše tharo tšeo o ka di dirago go dira gore ngwana yo moswa ka phapošing ya borutelo a ikwe a amogetšwe.



## Nako ya go utolla

Šoma ka bowena

1. O ikwa bjang ge o thuša ba bangwe?
2. O ikwa bjang ge o thušwa ke ba bangwe?



# Ke eng seo se dirago gore motho a be mogwera yo mobotse?

## Mošongwana wa 1



Šoma ka bowena

Ke **dika** dife tšeo di dirago gore motho a be mogwera yo mobotse?

1. Ngwala dika tše nne tšeo di dirago gore motho a be mogwera yo mobotse.
2. Ngwala dika tše nne tšeo di go dirago mogwera yo mobotse go bana ba bangwe.

Mogwera wa  
go loka

Mogwera wa  
go loka

Mogwera wa  
go loka

Mogwera wa  
go loka

**dika** – dilo tše botse ka motho tšeo di mo dirago gore a be yo a kgethegilego

Mantšu a  
maswa

## Mošongwana wa 2



Šoma ka diphere

Feleletša sereto sa segwera ka go ngwala dika le ditiro tšeo o naganago gore bagwera ba go loka ba swanela go ba le tšona.

Šomiša mantšu a ka gare ga lepokisi go thušega.

### Mogwera wa ka

Mogwera wa ka \_\_\_\_\_ ke motho yo mokaonekaone yo a kilego a ba gona,  
(leina le mogwera)

Ba \_\_\_\_\_, \_\_\_\_\_ ebile ba bohlale.  
(boleng) (boleng)

Mogwera wa ka o theeletša dikanegelo tša ka letšatši le lengwe le le lengwe.

Se se dira gore ke ikwe ke \_\_\_\_\_ ge re bapala.  
(maikutlo)

Ka mehla o ikemišeditše go \_\_\_\_\_ go abelana  
(tiro)

Go bontšha ka moo ba tshwenyegilego ka gona.

Naa ke boletše gore le bona ke \_\_\_\_\_?  
(boleng)

Mogwera yo mobotse go nna le wena.

**Dika:** go botega, go thabiša, go ba botho, go se fele pelo, go kwešiša, go amogela, go hlokomela

**Maikutlo:** thabile, ratwa

**Ditiro:** bolela, theeletša, raloka, thuša

## Mošongwana wa 3

Lebelela diswantšho.

1. Go direga eng ka gare ga seswantšho se sengwe le se sengwe?
2. Ke seswantšho sefe seo se bontšhago seka se sebotse sa go ba mogwera?



## Batho sekolong le ka gae

Morena Anwar ke morutiši sekolong se sengwe kua Limpopo. Ke morutiši yo a ratwago kudu ke barutwana ka gobane o dula a le botho, o tshwenyega ka bona ebile o a ba theeletša. Ka mehla yo mongwe le yo mongwe o ipshina ka klaseng ya Mna Anwar.

Mantšu a maswa

**go hloka tlhompho** – go ba le mekgwa e mebe go batho

**tlhompho** – go ba botho go batho le go latela melao

### Mošongwana wa 4



Šoma ka diphere

1. Ke dikarata dife tšeo di bontšhago **tlhompho** go morutiši le sekolo?
2. Ke dikarata dife tšeo di bontšhago **go hloka tlhompho** go barutiši le sekolo?

Go thala tafola le setulo sa ka.

Go se dire mošomo wo ke swanetšego go o dira.

Go ba botho go bana ba bangwe.

Go ba le mekgwa e mebe go barutiši.

Go latela melao ya sekolo.

Go fetša mošomo wa ka wa sekolo.

Go ba le mekgwa e mebe go bana ba bangwe.

Dumediša barutiši ba rena ge re ba bona.

## Go bontšha tlhompho le go thuša ba bangwe



Re bontšha tlhompho ka go thuša batho



Re hlompaha batho bao ba ka bago ba fapana le rena



Re bontšha tlhompho ka go boloka phaphoši le magae a rena ka bothakga



Re bontšha tlhompho ka go tshwenyega ka batho ba bagolo

### Mošongwana wa 5



Šoma ka diphere

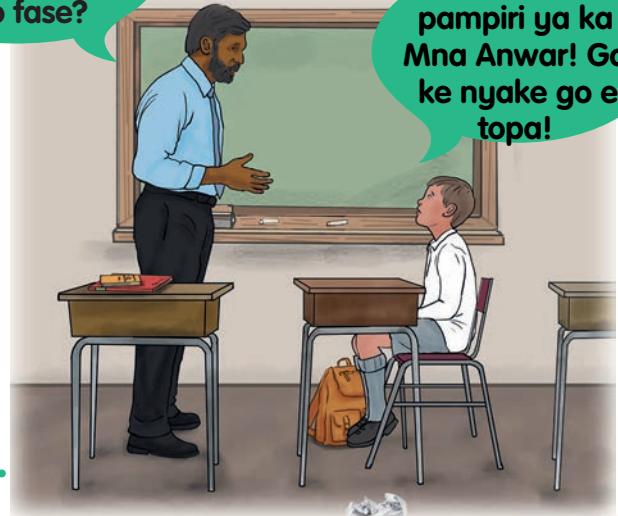
1. Bana ba bontšha bjang tlhompho go batho ba bangwe?
2. Dira phoustara ka pente go bontšha tlhompho. Kgetha ye nngwe ya dikgopolo go tšwa diswantšhong tše, goba o šomiše kgopolo ya gago.
3. Botša phapoši ka phoustara ya gago.

Ka dinako tše dingwe ga re bontšhe batho tlhompfo.

Ge re dira se, re swanetše go kgopela tshwarelo go batho bao.

Zac, hle na o tla topa pampiri yeo e lego fase?

Ga se pampiri ya ka Mna Anwar! Ga ke nyake go e topa!



## Mošongwana wa 6

Šoma ka bowena

1. Naa Zac o bontšha tlhompfo goba ga a hlomphe Mna Anwar?
2. Ge nkabe o le Mna Anwar, na o be o tla thabela karabo ya Zac?
3. Zac o swanetše go dira eng ka morago ga moo?
4. Itire eka o Zac gomme o direle Mna Anwar karata.

Seo o ka se oketšago ka karateng ya gago:

- Bolela ore tshwarelo go Mna Anwar
- Tshepiša Mna Anwar gore o ka se bolele le yena ka tsela yeo gape
- Thala seswantšho seo se tlogo go dira gore Mna Anwar a myemyele



## Mošongwana wa 7



Šoma ka bowena

1. Lota mohlala wa seatla sa gago ka pukung ya gago.
2. Ngwala ditiro tše hlano tšeo o ka di dirago tšeo di tlogo go thuša le go bontšha tlhompfo go ba bangwe.
3. Ngwala tiro e tee monwaneng wo mongwe le wo mongwe.



Mantšu a maswa

**go kgoa** – go bolela goba go dira dilo tše mpe go ba bangwe  
**go ipona ga rena** – tsela yeo o ikwago ka yona ka wena



**Nako ya go utolla**

Ge o thušitše mogwera wa gago, o swanela go letela gore a go fe se sengwe?

## Go kgoa le go ipona ga rena

**Go kgoa** ke ge motho a le kgopo go motho yo mongwe ntle le lebaka.

Ge batho ba kgoa, go ba dira gore ba ikwe gampe.

Tsela yeo re ikwago ka yona ka rena e bitšwa **go ipona ga rena**.

### Mošongwana wa 8



Šoma ka diphere

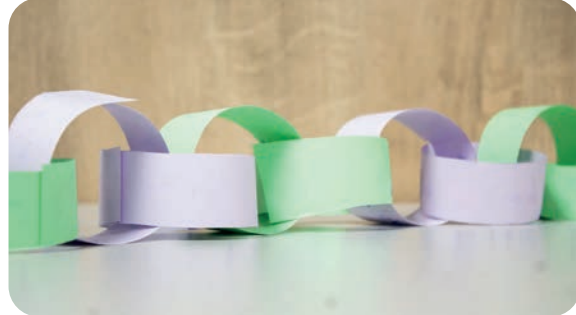
1. Go direga eng mo seswantšhong?
2. O be o tla ikwa bjang ge bana ba bangwe ba be ba ka go dira se?
3. Ke mang yo a ka re thušago ge e ba re kgoelwa?
4. Re ka dira bjang gore batho ba ikwe ba le kaone ka bona?



## Mošongwana wa 9



Šoma ka dihlopha. Dira ketane ya melaetša. O tla hloka:



- Dipene tša mebala
- Sekero
- Steiplara
- Mmala o fapaneng wa dipampiri tša bogolo bja A4

Ditaelo:

1. Kgaola maphephe a mebala ka diripa tše 5.
2. Neela moithuti yo mongwe le yo mongwe seripa se tee.
3. Moithuti yo mongwe le yo mongwe o swanetše go ngwala fase e ka ba:
  - Tsela e nngwe ya go thibela go kgoa
  - Tsela nngwe ya go bontšha tlhompho go ba bangwe.
4. Koba seripa se sengwe le se sengwe go kgokaganyo. Diriša steiplara go kopanya diripa ka moka go dira ketane.
5. Kgabiša phapoši ka diketane tša melaetša.

## A re lekole

1. Bolela dikhwalithi tše tharo tšeo mogwera wa go loka a swanetšego go ba le tšona.
2. O ka bontšha bjang tlhompho go ba bangwe?
3. Kgetha lentšu la maleba: Go kgoa go dira gore batho ba ikwe ba (**ipshina/ba tshwenya**).
4. O ka thibela bjang go kgoa lepatlelong la go raloka?



# Sererwa sa 3 Motho yo mongwe le yo mongwe o kgethegile



## A re thome

Lebelela diswantšho.

1. Ke eng seo se dirago gore batho bao ba lego diswantšhong ba be ba **kgethegilego**?
2. Ke eng seo se go dirago gore o be yo a kgethegilego?
3. Ke eng seo se dirago gore bagwera ba gago ba be ba kgethegilego?



Mantšu a maswa

### kgethegilego

– selo seo se re dirago gore re fapane go batho ba bangwe

**kgatišo ya menwana** – mokgwa wa maswao ao a dirilwego ke dintlha tša menwana ya rena



### Nako ya go utolla

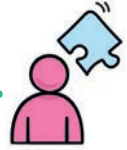
Ga go na motho yo a nago le dikgatišo tša menwana tše di swanago le tša gago.

Šoma ka diphere.

1. Penta ntlha ya monwana wa gago ka pente ya mebala ya meetse gomme o e gatiše letlakaleng.
2. Lebelela ka kelohloko kgatišo ya menwana ya gago le kgatišo ya menwana ya mogwera wa gago.
3. Naa di bonala di swana?

# Batho ba a swana ebile batho ba a fapana

## Mošongwana wa 1



Šoma ka bowena

Sepela ka phapošing gomme o hwetše dilo tšeo di **swanago** le tšeo di **fapanago** gare ga gago le bao o tsenago le bona ka phapošing.

1. Hwetša motho yo a nago le moriri wo o swanago le wa gago.
2. Hwetša motho yo a ralokago dipapadi tše di fapanego le tša gago.
3. Hwetša motho yo a aparago digalase tša mahlo.
4. Hwetša motho wa botelele bjo bo swanago le bja gago.

**go swana** – dilo tšeo di swanago.

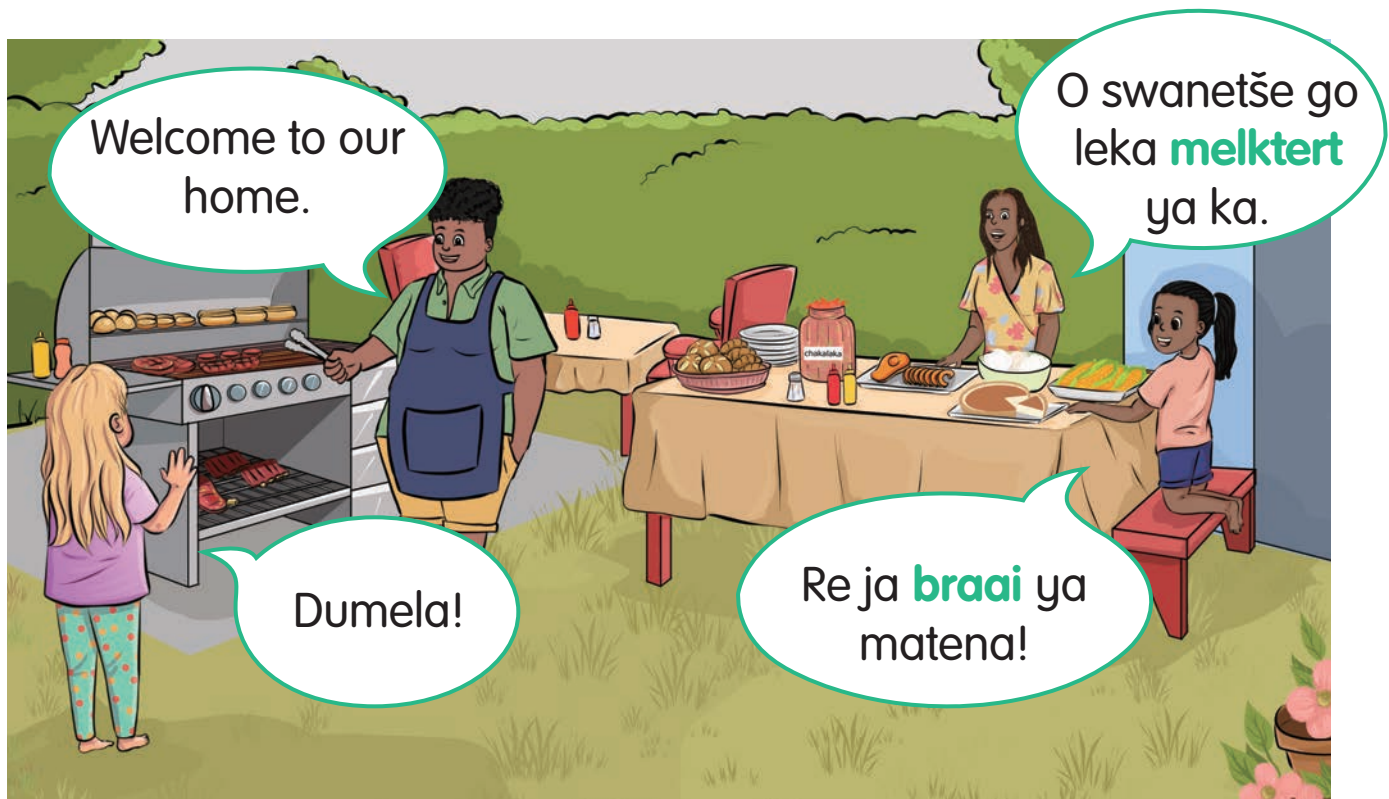
**diphapano** – dilo tšeo di sa swanego.

**braai** – go apea nama godimo ga magala a bulegilego

**melktert** – phuting ya afrika borwa ya go ba le phastri ya swikiri

Mantšu a maswa

Lilanie le Entle ba rata go fetša nako le malapa a yo mongwe le yo mongwe. Ba ithutile gore malapa a bona a ka ba a fapane, eupša le ona a swana ka ditsela tše dintši.



## Mošongwana wa 2



Šoma ka diphere

1. Tatagoentle o bolela leleme lefe?
2. O bolela leleme lefe ka gae?
3. Ke dijo dife tšeo di lego tafoleng tšeo o ratago go di ja?

# Dilo tšeo di thušago batho

## Mošongwana wa 3



Šoma ka diphere

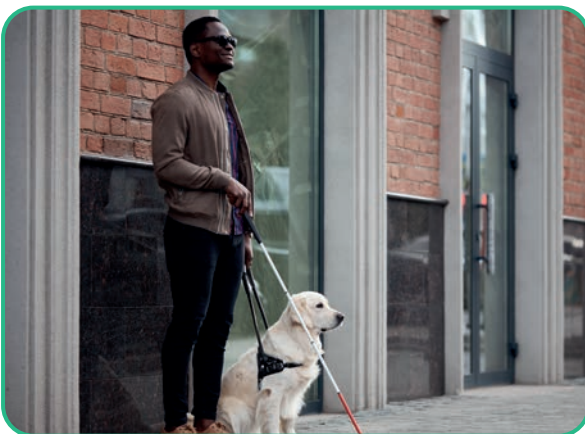
Di thuša batho bjang dilo tše?



Digalase tša go bala le go bona dilo tša kgole.



Walker yeo e šomišwago go sepela.



Mpša ya tlhahlo le lehlaka le lešweu.



Dithušo tša go kwa.



## Nako ya go utolla

Nyakišiša ka Mafrika Borwa a atlegilego a go phela ka bogolofadi. Šomiša dikuranta, dimakasine goba inthanete go thušega.

Abelana seo o se hwetšago le phapoši ya gago.

## Mošongwana wa 4



Šoma ka diphere

### Papadi ya go tswalela mahlo

O tla hloka:

- Seširo sa mahlo
  - Kgwele ya thenese goba thupa
1. Thiba modirišani wa gago mahlo. Kgonthiša gore ga a kgone go bona selo.
  2. Bea bolo ya thenese goba thupa go gongwe gore modirišani wa gago a e nyake go fihlela a e hwetša.
  3. Ema le molekane wa gago yo a tswaletšego mahlo.
  4. Botša modirišani wa gago gore a ka hwetša bjang bolo ya thenese goba thupa. Mo fe ditaelo.

## Go hlokomela bagolofadi

Bala kanegelo ya Nomsa.

Nomsa ke ngwanenyana wa mengwaga ye 8 yo a šomišago setulothethi sa digole ka ge a sa kgone go sepela. O ile a

bagolofadi sekolong se sefsa moo a swanetšego go diriša dirempo gore a fihle ka phapošing. Nomsa ka dinako tše dingwe o dula ka phapošing nakong ya go khutša ka ge a lapile kudu gore a ka šomiša dirampe. Go boima gore Nomsa a dire bagwera ka ge a dula a nnoši ka phapošing ka nako ya go khutša.



Lentšu le leswa

**bogolofadi** – ge o sa kgone go šomiša karolo ye nngwe ya mmele wa gago

**rempo** – karolo ya lebato ye e sekamego yeo e dirago gore go be bonolo gore motho a e namele ka setulothethi sa gagwe sa bagolofadi sebakeng sa go šomiša ditepisi

### Mošongwana wa 5

Šoma ka bowena

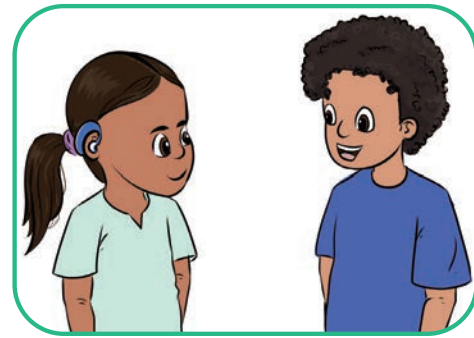


1. Ge nkabe Nomsa e be e le yo mongwe wa ka phapošing ya gago, o be o tla mo thuša bjang?
2. Naa Nomsa o swanetše go dula a nnoši nakong ya go khutša? Ke ka lebaka la eng?
3. O be o tla ikwa bjang ge o dula o nnoši ka phapošing nakong ya go khutša?

## Mošongwana wa 6

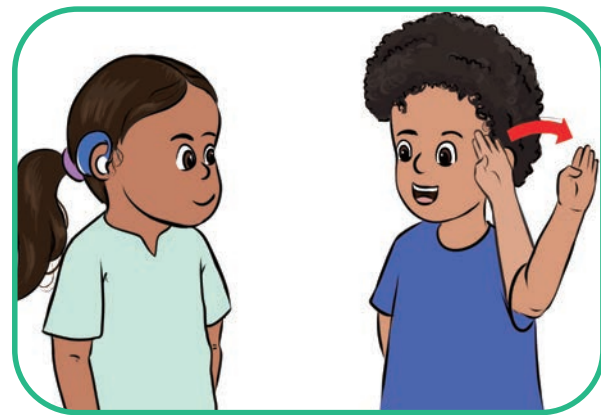
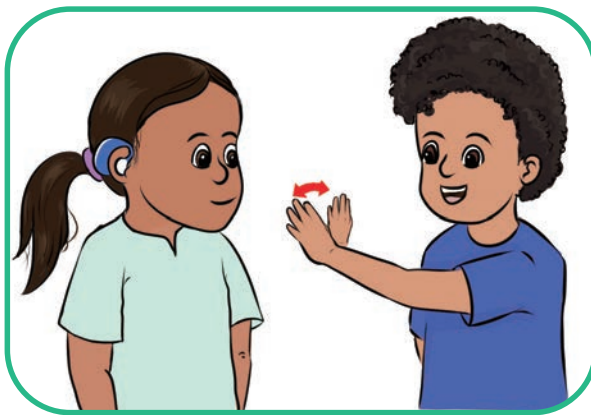


Jayden o na le mogwera, Kiara yoo a sa kgonego go kwa gabotse. Kiara o kgona go kwa ge batho ba bolela ge a šomiša **sethušagokwa**. Ka dinako tše dingwe Kiara o **šomiša polelo ya diatla** go bolela le batho.



Šoma ka diphere. Lebelela diswantšho tša ka fase.

Jayden o boledišana bjang le Kiara?



Mantšu a maswa

**thušo ya go kwa** – selo seo o se aparago ka gare goba ka morago ga tsebe ya gago seo se go thušago go kwa

**polelo ya diatla** – go šomiša diatla tša gago le dikarolo tše dingwe tša mmele wa gago go bolela

## Nka ba mogale

### Mošongwana wa 7



Šoma ka diphere

1. Mogale ke eng?
2. Naa o swanetše go ba yo mogolo gore o be mogale?
3. O ka ba mogale bjang bjale?

### Mošongwana wa 7

Šoma ka bowena.

Lebelela diswantšho.

O ka ba mogale bjang?



Nka ba mogale ka \_\_\_\_\_.



Nka ba mogale ka \_\_\_\_\_.



Nka ba mogale ka \_\_\_\_\_.

**mogale** – motho yo a dirago goba a boelago dilo tšeo di  
thušago batho ba bangwe

Lentšu le  
leswa

## Mošongwana wa 9

Šoma ka bowena.

1. Thala seswantšho sa gago o na le mogale wa gago.
2. Feleleletša mafoko ka ga mogale wa gago.

Mogale wa ka ke \_\_\_\_\_.

Ke mogale wa ka ka gobane \_\_\_\_\_.

3. Dira sešira-maske sa gago sa mogale.

O tla hloka:

Khateboto ye sese

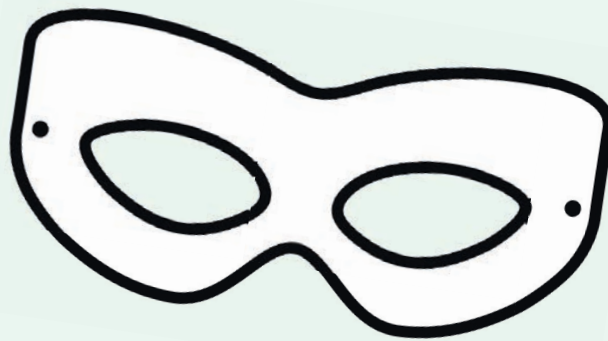
Phensele, dikherayone, dikhoki

Sekero

Rekere goba thapo

Ditaelo:

1. Thala sebopego sa maske mo khateboteng.
2. Ripa maske.
3. Kgopela morutiši wa gago gore a go thuše go dira mašoba a manyane ka lehlakoreng le lengwe le le lengwe la maske.
4. Bea rekere goba thapo ka lešoba le lengwe le le lengwe gomme o tleme rekere.
5. Diriša mmala go kgabiša maske a gago.

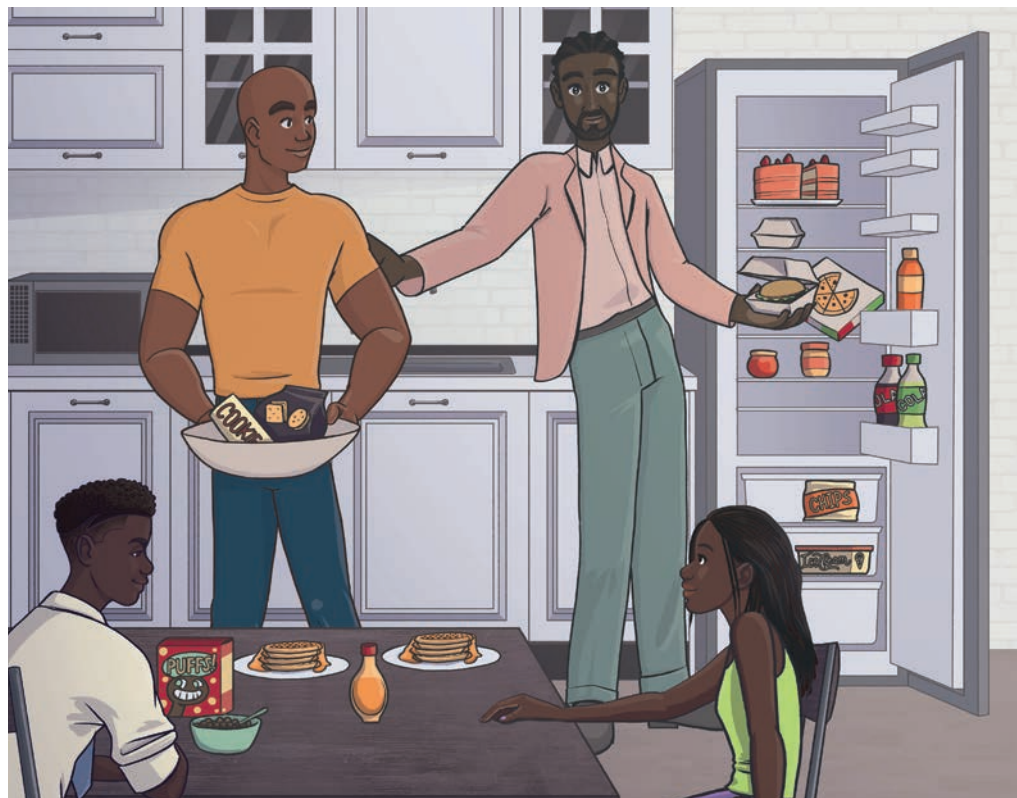
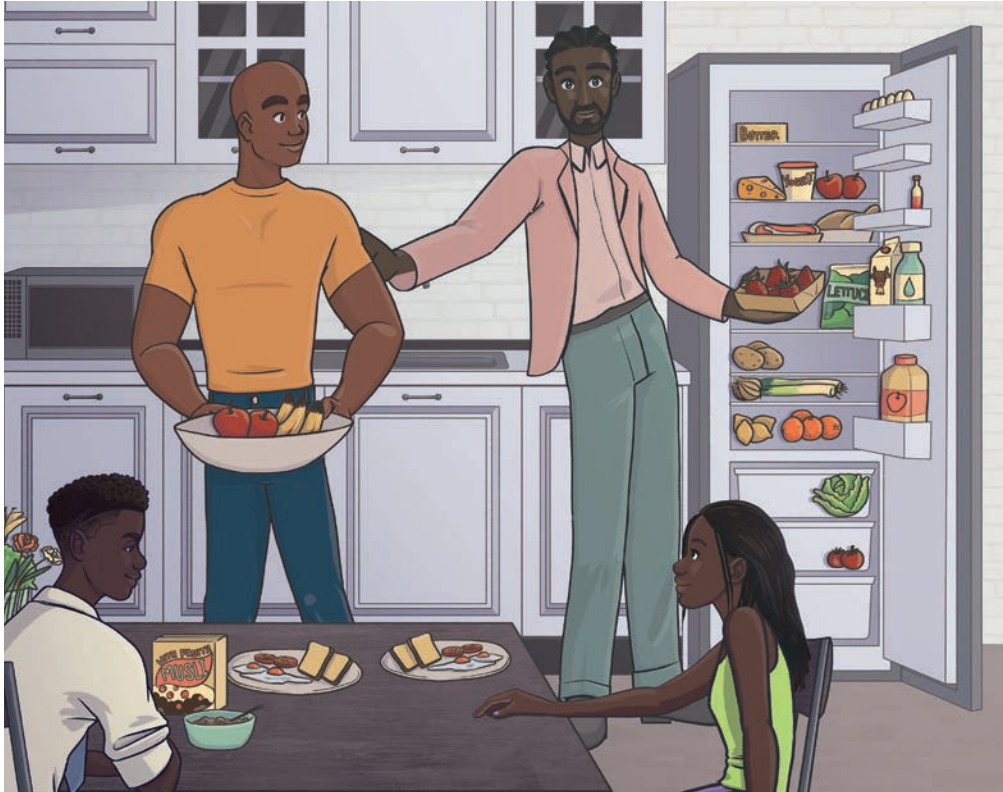


## A re lekole

1. O swana bjang le bana ba ka phapošing?
2. O fapana bjang le bana ba ka phapošing ya gago?
3. O ka hlokomela bjang batho bao ba golofetšego?
4. O ka ba mogale bjang?



# Sererwa sa 4 Bophelo bja go dula o phetše gabotse



## A re thome

1. Ke seswantšho sefe seo se bontšhago batho ba eja dijo tše di fago bophelo?
2. Bolela tše dingwe tša dijo tše di fago bophelo seswantšhong.
3. Ke dijo dife tšeo o di jago ka gae?
4. Ke ka lebaka la eng go le bohlokwa go ja dijo tše di fago bophelo?



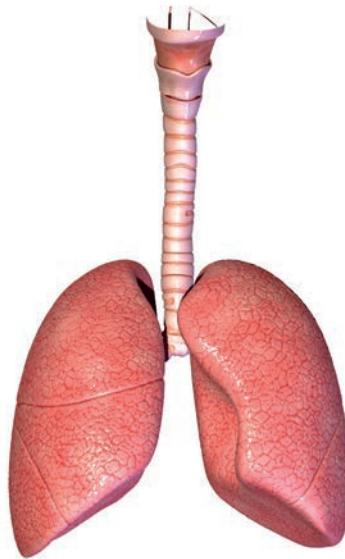
## Tsela ya go dula o phetše gabotse

Ge re hlokomela mebele ya rena, ditho tša rena di šoma gabotse gomme mebele ya rena e ya matlafala.

Go ja dijo tša maleba le tekanyo ya maleba ya tšona, go boloka mebele ya rena gore e phele gabotse.



Bjoko



Maswafo

Bjoko bja rena le maswafo ke ditho tše bohlokwa mebeleng ya rena.

Gape re dira gore mebele le menagano ya rena e dule e phetše gabotse ka go itšhidulla, go nwa meetse a lekanego le go robala ka mo go lekanego.

**setho** – karolo ya sephedi goba sebjalo seo se dirago mošomo wo o kgethegilego

Mantšu a maswa

## Mošongwana wa 1

Šoma ka bowena.

1. Bala lenaneo la go hlahloba.
2. Ngwala mekgwa ye e fago befell ka pukung ya gago.

### Mekgwa ye e fago bophelo goba ye e sa feng bophelo?

Bolela ka maikwelo a gago.

Robala ka mo go lekanego.

Hlapa mmele wa gago, diatla le maoto.

Eja dijo tše di fago bophelo.

Hlwekiša meno a gago.

Nwa kofi.

Šomiša letswai le le ntši dijong tša gago.

Dira boitšhidullo bjo itšego.

Lebelela TV mafelelo a beke ka moka.

Tšhela swikiri dijong tša gago ka moka.

## Ke eng seo se re dirago gore re se phele gabotse?

Ge re e ja dijo tše dintši tša go hloka phepo ebile re sa šidulle mebele ya rena re ka lwala.

### Mošongwana wa 2

Šoma ka dihlopha.

1. Hwetša maina a dijo tše di sa feng bophelo mo nyakišišong ya mantšu.
2. Dira lefoko ka mantšu a mabedi.

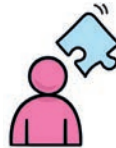
khekhe dimonamone ditšhipsi pitsa swik

b	x	q	b	v	c	d	a	f	r	d	a	o	e	a	k	j	z
n	u	r	w	b	o	z	o	v	u	q	a	e	g	g	i	k	j
w	u	x	y	u	s	d	i	t	h	i	p	s	i	s	q	u	y
t	z	f	k	h	e	k	h	e	n	v	p	o	x	q	j	b	k
i	o	a	n	y	i	o	l	k	y	k	d	i	b	g	h	x	f
m	r	x	n	s	u	x	q	l	o	v	h	s	t	j	w	g	m
t	g	q	f	y	c	o	c	b	l	d	d	j	h	s	y	i	y
l	g	i	c	n	q	k	w	n	a	d	y	f	n	t	a	g	u
l	v	w	k	r	f	t	a	c	p	y	h	x	j	c	z	k	o
b	q	v	y	b	c	x	j	v	g	v	s	w	i	k	x	f	n
a	b	f	i	d	s	n	z	q	r	l	o	i	t	a	k	g	l
d	i	m	o	n	a	m	o	n	e	c	u	d	h	a	c	f	w

## Dilo tšeo di re gobatšago

### Mošongwana wa 3

Šoma ka bowena



1. Lebelela diswantšho.
2. Bala dikhepšene.
3. Kgetha lentšu go tšwa lepokising go fetša lefoko le lengwe le le lengwe.

#### disekerete

– phuphu ye nnyane ya pampiri yeo e tletšego ka motsoko yeo e ka gotetšago

**e sego molaong** – selo seo se thulanago le molao goba se roba melawana

Mantšu a maswa

bjala

kgoga

diokobatši

Go boloka maswafo a rena gore a dule a phetše gabotse, ga se ra swanela go \_\_\_\_\_  
**disekerete.**



Go boloka sebete sa rena gore se dule se phetše gabotse, ga se ra swanela go nwa \_\_\_\_\_.



Go boloka dipelo le menagano ya rena gore di dule di phetše gabotse, ga se ra swanela go tšea \_\_\_\_\_ tšeo **di sego molaong.**



## Go šireletša dijo tšeo re di jago

Bala kanegelo ya go boloka dijo tša gago.

Mmago Nisha o be a kitimiša nako. O be a nyaka go fihliša Nisha sekolong ka nako. Ka go kitimiša nako ga gagwe, o ile a lebala go bušetša maswi ka setšidifatšing. Gape o ile a lebala go tswalela sebjana sa disiriyele gabotse.

Ge Nisha le mmagwe ba fihla gae thapama, sebjana sa disiriyele se be se tletše ka ditšhošwane. Ntšhi e be e duma go dikologa maswi gomme le ona o be e nkgampe.

### Mošongwana wa 4



Šoma ka diphere

1. Go diregile eng ka disiriyele?
2. Mmago Nisha o swanetše go boloka maswi kae?
3. Ke ka lebaka la eng maswi a be a nkgampe?
4. Ke ka lebaka la eng dijo tše dingwe di swanetše go bolokwa ka setšidifatšing?
5. Beakanaya dijo tše di latelago ka tšeo di swanetšego go bolokwa ka setšidifatšing le tšeo di ka bolokwago ka khaboteng.

dikarolwana tša nama ya kgogo tše di sa butšwago

mokotla wo o bulegilego wa folouru

setšhoo sa mašaledi

mokotla wo o bulegilego wa raese

# Ditsela tše bonolo tša go hlwekiša meetse

## Mošongwana wa 5



Šoma ka dihlopha

1. Bala kanegelo.

Rakgolo Oupa o rata go ruta setlogolo sa gagwe Jackson le mogwera wa gagwe Themba ditsela tše di fapanego tša go hlwekiša meetse a ditšhila.



2. Latela ditaelo tša Rakgolo Harold go dira sefo ya mohlaba ye nnyane go **hlwekiša** meetse.

### Aga Sefo ya meetse

O tla hloka:

Lebotlelo la polasitiki la meetse goba la seno se se tonyago

Mehuta ye mebedi ye e fapanego ya mohlaba (mohlaba ye botse le mohlaba wa makgwakgwa)

Maswika a mannyane

- Maswika a magolo
- Sekero
- Boya bja kgapetla
- Meetse a ditšhila



### **Kgato ya pele:**

Tsela ya go dira sefo ya meetse:  
Rola sekhumelo sa lebotlelo.

Sega lebotlelo la meetse ka bogare.

Bea seripa sa godimo sa lebotlelo ka gare ga seripa sa ka fase, o se lebeleditše fase.



### **Kgato ya bobedi:**

Bea legato la boya bja kgapetla ka fase ga lebotlelo.



Bjale o tsenye mohlaba wa botse, ke moka mohlaba wa makgwakgwa. Godimo ga mohlaba wa makgwakgwa o tsenye maswika a manyane, gomme ka morago maswika a magolo.

### **Kgato ya boraro:**

Tšhela meetse a ditšhila ka go nanya ka gare ga sefo ya gago ya mohlaba ye nnyane.



Lebelela meetse ao a kgobokanago ka fase ga lebotlelo.

Meetse a gago a lebelega bjang ka morago ga go feta ka gare ga sefo?