

# 1. Nami ngibalulekile

## Imibuzo ngaphambi kokufunda:

1. Kungani amanzi eyimpilo?
2. Siwathola kuphi amanzi?



USthabile ulungela ukuya esikoleni. Uzogeza bese eyaxubha. USthabile umngani wami.



Ingabe izokwenzani uma iqeda ukugeza intombazane.



Kubalulekile ukuphuza amanzi njalo. Siphuza amanzi njalo ngemuva kokudla. Ngiyamunakekela umngane wami. Impela ngibalulekile.



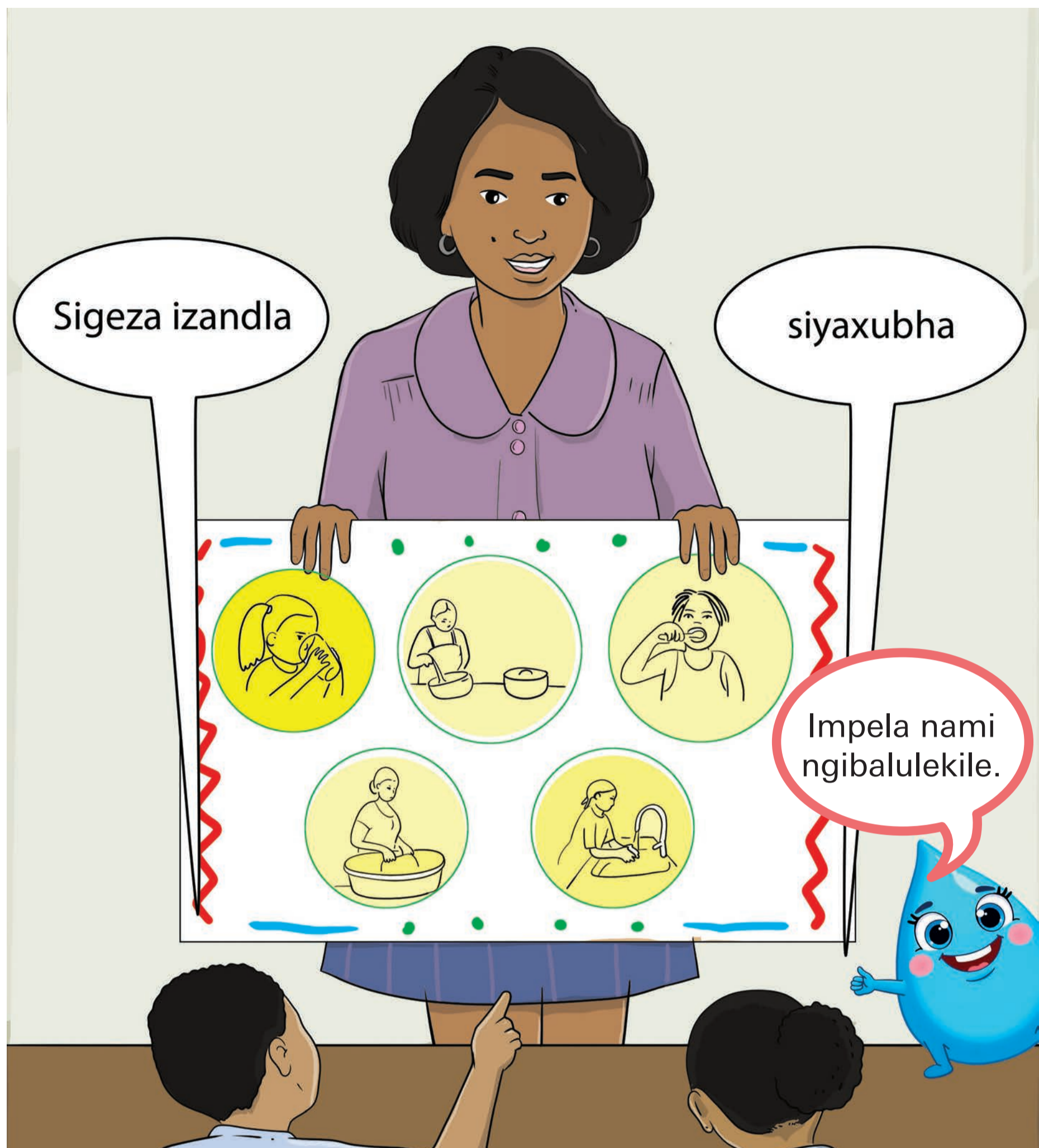
Kungani kubalulekile ukuphuza amanzi njalo?  
Zingaki izingilazi zamanzi okumele uziphuze ngosuku?



UMisi uthi imizimba yabo idinga amanzi. Kufanele baphuze amanzi ukuze bahlale bephilile. Impela ngibalulekile.



Ishadi elingemuva kukaMisi lifundisa ngani?  
Kungani uMisi ethi imzimba yethu idinga amanzi?



Amanzi bayawaphuza, bahlanze izimpahla, bachelele izitshalo baphinde bageze nezitsha ngawo.



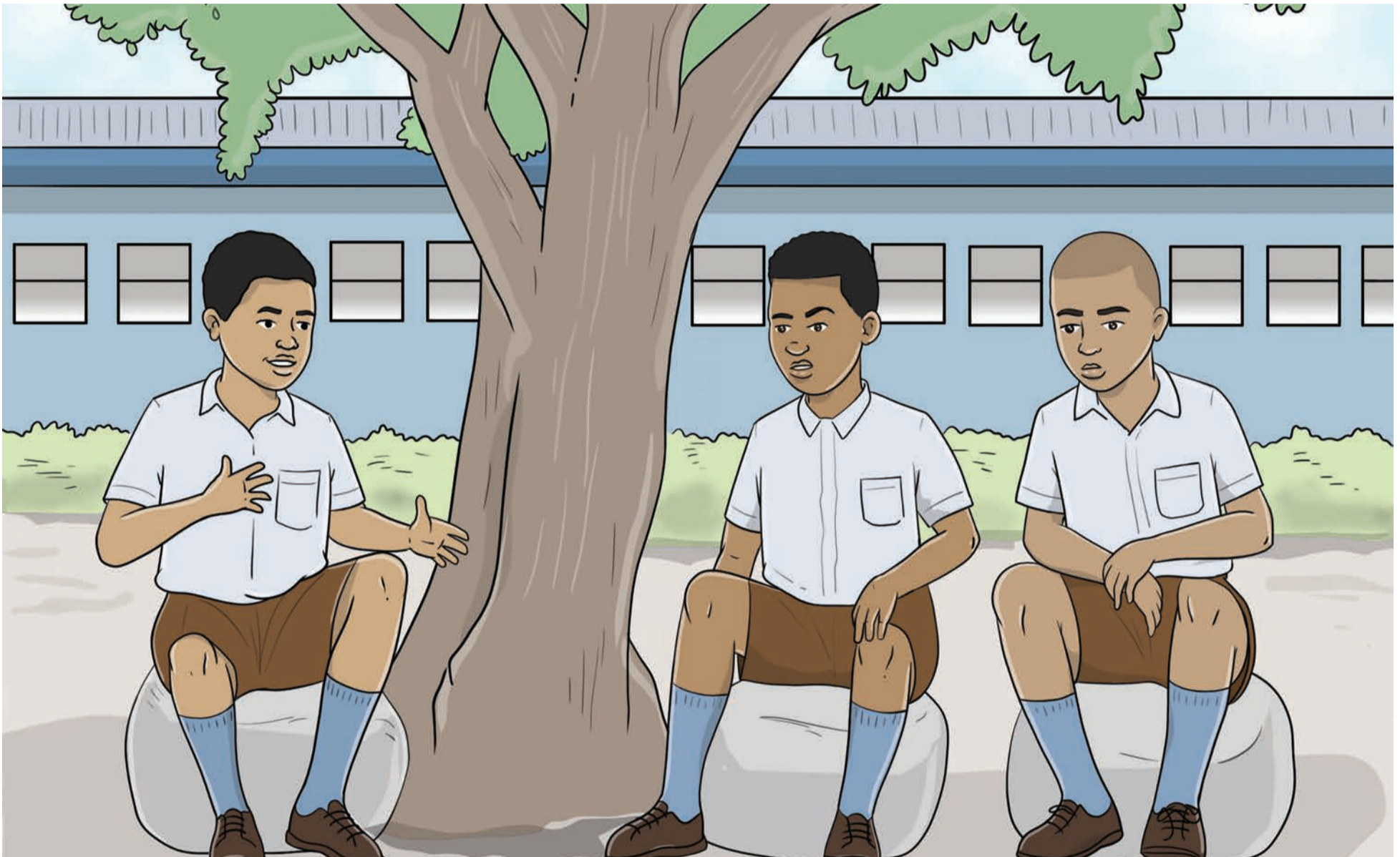
Sizigeza nini izandla?

Yimiphi eminye imisebenzi yamanzi?

## 2. Sitshala izihlahla esikoleni

### Imibuzo ngaphambi kokufunda:

1. Sizisiza ngani izihlahla?
2. Ucabanga ukuthi kuzokwenzekani endabeni?

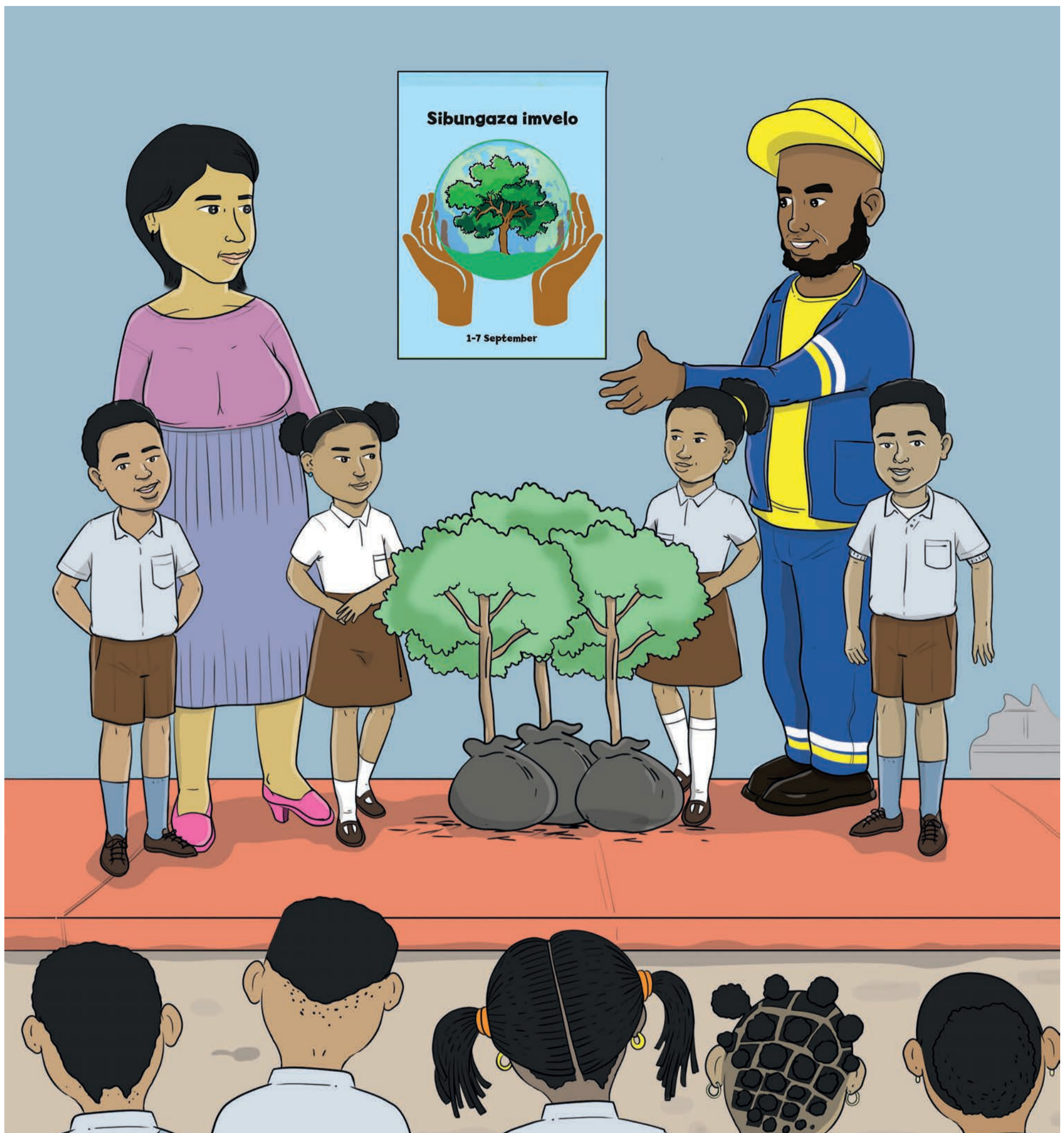


Kuqala iviki lokutshala izihlahla.  
Izihlahla zitshalwa uma kuqala  
intwasahlobo.



Izihlahla zitshalwa nini?

Ngiyazibuka ukuthi ingabe baxoxangani laba bafana.

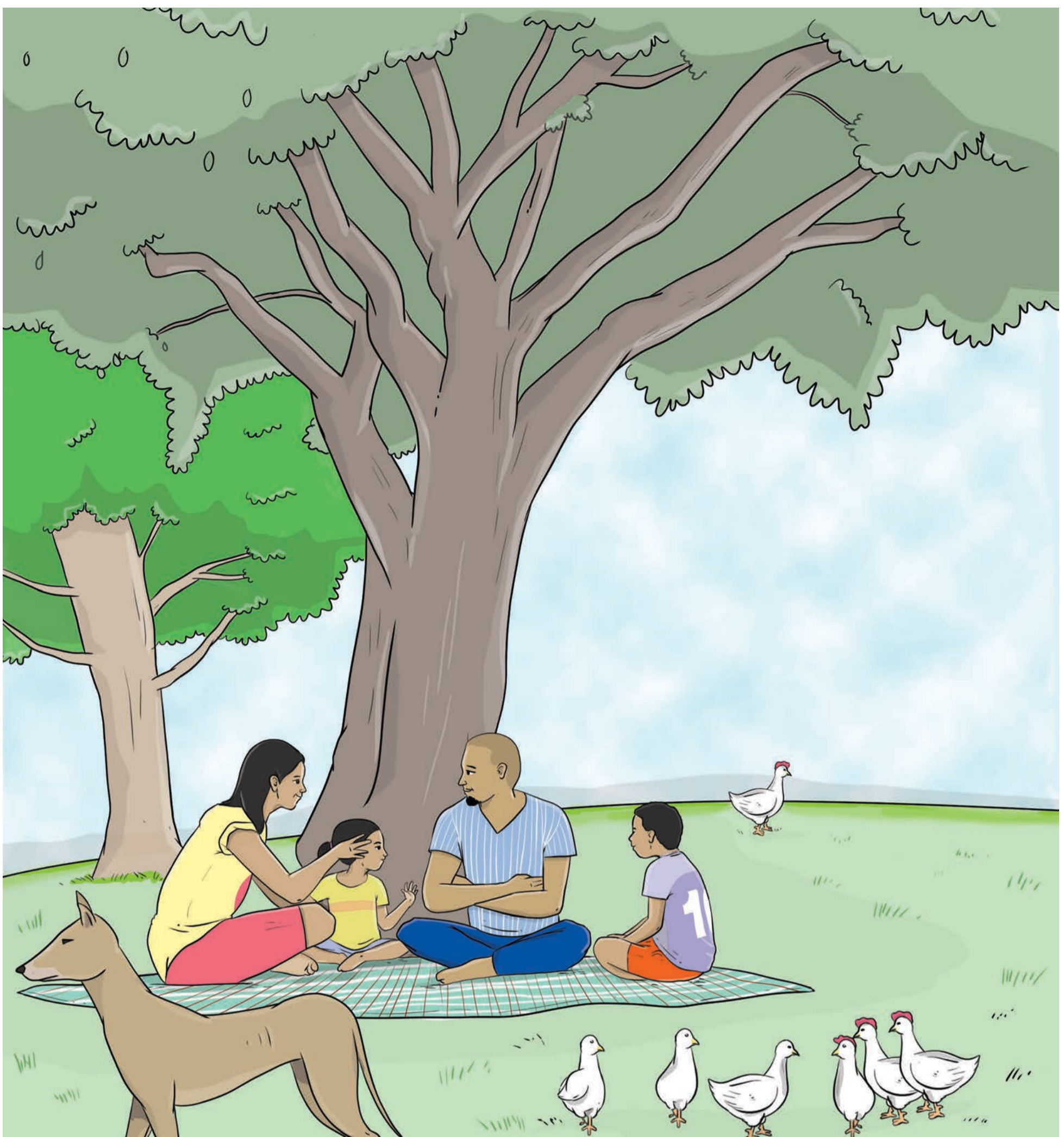


“Namuhla i-abha deyi. Sinezihambeli. AbakwaMasipala banikela ngezihlahla.



Lunini usuku lwe-abha deyi?

Izihambeli zakwaMasipala zizokwenzani esikoleni?



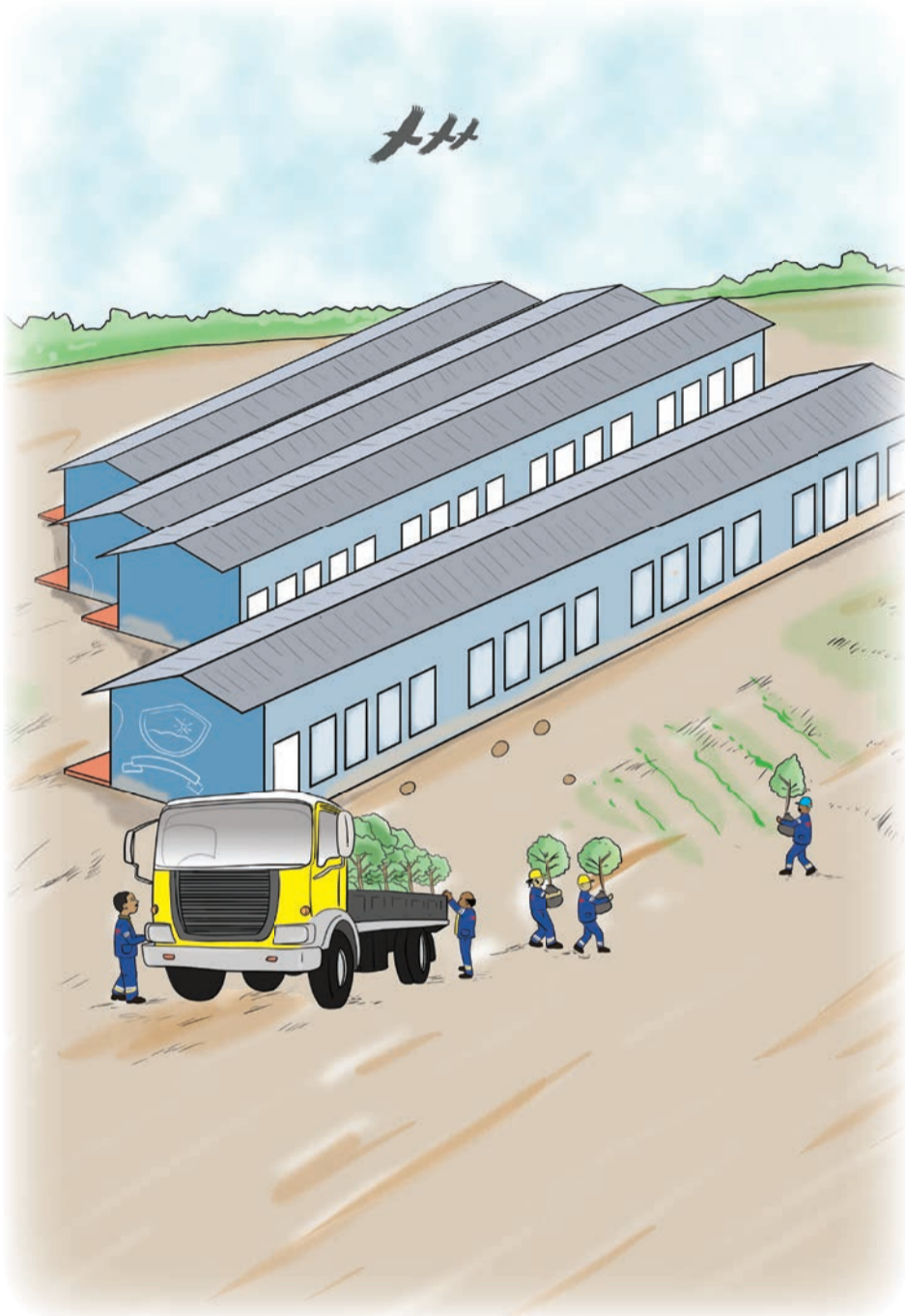
Izihlahla zakha umoya ohlanzekile.  
Zivikela izindlu emoyeni. Zisinika  
umthunzi uma lishisa ilanga.



Zisiza ngani izihlahla?

Nihlala kuphi uma lishisa ilanga?

# Sijabule kakhulu nothisha bethu.



Sonke siya lapho kuzotshalwa khona.  
Sifike salekelela ukumba imigodi.  
Salekelela ngokugqiba, silethe  
namanzi okunisela siyedla siyenyuka.



Bajabuleleni abafundi nothisha?  
Bafike belekelela ngani abafundi?