

CAPS

maskew miller  
learning



IBANGA

2

INCWADI  
YOKUFUNDA

# Platinum

Isisekelo Solimi

N. Mtshali • N. Shandu-Khenisa • T. Shabalala

## Platinum Isisekelo Solimi Ibanga 2 Incwadi Yokufunda

Maskew Miller Learning (Pty) Ltd  
10 Freedom Way, Milnerton, Cape Town, 7441

© Maskew Miller Learning (Pty) Ltd 2025

Wonke amalungelo agodliwe. Ayikho ingxenye yalolushicilelo efanele yenziwe kabusha, ilondwe endaweni enokutholakala kuyo lula, noma idluliselwe phambili ngolunye uhlobo noma ngenye indlela ye-elektronikhi, kusetshenziswa imishini, ngokwenza amakhophi, ngokuqoshwa, noma ngezinye izindlela, ngaphandle kwemvume ebhalwe phansi yalowo onamalungelo alokho okushicilelwe.

Ukuthola imvume yokushicilela noma ukusebenzisa ingxenye yalencwadi, xhumana neqembu lamaLungelo nezimvume kule nombolo 021 532 6000 noma uthumele i-imeyili ku: [rightsgranting@mml.co.za](mailto:rightsgranting@mml.co.za). Ukubika abaphula umthetho welungelomnikazi sicela uthumele umyalezo ku: [copyright@mml.co.za](mailto:copyright@mml.co.za).

Ishicilelwe ngowezi: 2025

ISBN: 978-1-834-95341-0  
ePDF ISBN: 978-1-834-97866-6

Umshicileli ngu: Sphindile Mthethwa  
Umhleli ophethe ngu: Nomcebo Mabuza  
Ihlelwe ngu: Dr PSEH Tlou  
Ikhava yencwadi yahlelwa yi: MML Visual Design  
Umdwebo kwikhava yencwadi yi: MML Visual Design  
Incwadi idizayinwe yi: MML Visual Design  
Umdwebo ngu: MML Visual Design, M Amisi, CeekerArts  
Ukuhlelwa kokuthayipha ngu: Rocket Design  
Igaywe abakwa:

# Okuqukethwe

## Ithemu-1

### Umbhalo woku-1:

Sithungatha umcebo ..... 1

### Umbhalo wesi-2:

Ososayensi abancane ..... 5

### Umbhalo wesi-3:

Isihlahla sabangani ..... 8

### Umbhalo wesi-4:

Ihlathi lezimanga ..... 11

### Umbhalo wesi-5:

Insimu eyingqayizivele ..... 14

## Ithemu-2

### Umbhalo wesi-6:

Isimanga behwebelana ngezibi ... 21

### Umbhalo wesi-7:

Ukungcola kuyagulisa! ..... 25

### Umbhalo wesi-8:

Lekelela Nawe! ..... 29

### Umbhalo wesi-9:

Udwendwe lwakwaDweku ..... 33

### Umbhalo we-10:

UGobhoza umfula wakwaMbeje! 36

## Ithemu-3

### Umbhalo we-11:

Makhekhe mani lawa? ..... 40

### Umbhalo we-12:

Vala umlomo uvule amehlo! ..... 45

### Umbhalo we-13:

Yenzek'indaba! ..... 50

### Umbhalo we-14:

Sacishe salala esitobhini ..... 55

### Umbhalo we-15:

Ibhodwe lomlingo ..... 60

## Ithemu-4

### Umbhalo we-16:

Isitaladi sodumo saseNdwedwe .. 66

### Umbhalo we-17:

NginguNgwane izinyane  
lengwenyama ..... 72

### Umbhalo we-18:

Kwahanjwa nezikhonjwe  
ingqwele ..... 78

### Umbhalo we-19:

UNzwakele unecebo lokuhlanzwa  
kwamanzi ..... 84

### Umbhalo wama-20:

UNswi uxosha izinswelaboya ..... 91

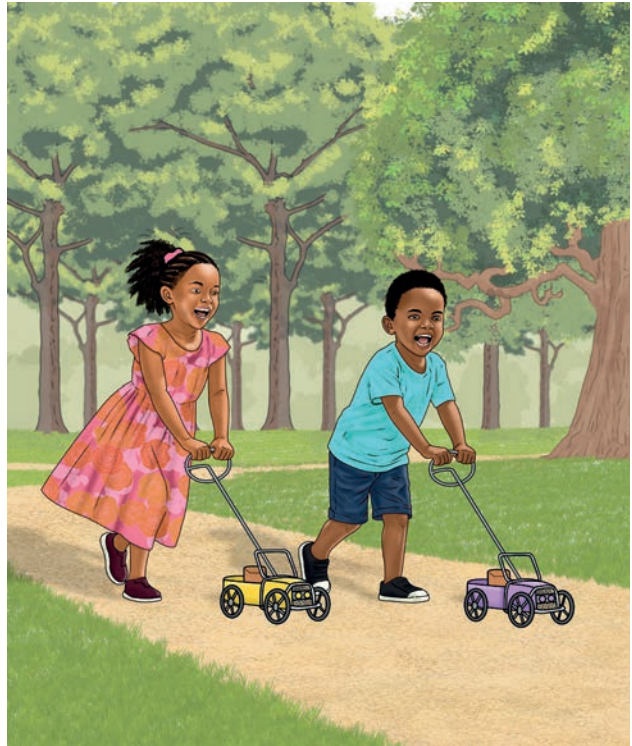
**Amagama amasha ..... 98**

# Sithungatha umcebo

## Imibuzo ngaphambi ngokufunda

1. Umbubona kanjani umngani weqiniso?
2. Unaye yini umngani omkhulu?

UNcamisile noNceba abangani abakhulu. UNceba ungumuntu onozwelo futhi uyacabangelana. UNcamisile ungumuntu onamahlaya uhlala ehlekisa uNceba. Uma sengimhleka uNceba umane angibuke anconcoze bese ehleka. Sincamele ukusuka emakhaya siphethe nokuya ethunjini ngoba singase sithathe isikhathi eside epaki. UMGqibelo emini libalele kamnadi izulu namuhla.



Phimisa  
umsindo



nc

**amahlaya:** into ehlekisayo

Siyodlala umdlalo wokufuna umcebo epaki. Sabiza nomngani wethu omunye uNdoni. Yithi labaya sesithatha imephu enkulu. Le mephu iyona ezosiholela endaweni eyimfihlo yale paki. Le ndawo enkulukazi awukwazi ukuyihamba ungaphathanga imephu noma ungalandeli imephu. Habe! Sizokwenzenjani Nceba uma kunje! Kubabaza uNdoni. UNcamisile noNceba bacabanga ngokushesha babukisisa kahle izimpawu zendawo enomcebo.



**imephu:** into ekhombisa ufika kanjani endaweni

Silandela ibalazwe siya esihlahleni esikhulu lapho elisikhomba khona. “Wo! Uyasibona kodwa nasi lesiya sihlahla esikhulukazi esisebalazweni phambi kwethu; asishoshele khona. Hawu, yini le Nceba!” Ngaphansi kwesihlahla bathola ibhokisi elinendondo yokhuni.”

lu | la | ma

lulama

**Hlukanisa igama**

abathandanayo



**ibalazwe:** imephu

“Kukhonani Ndoni?” “Kukhona inothi elithi,  
“*Ningabangane abakhulu abathandanayo!*  
*Qhubekani nisizane.*” Bayajabula ukuthi basebenze  
ndawonye baze bathola lo mlayezo omuhle  
kangaka. Baqhubeka nosuku badlala ndawonye  
epaki kwaze kwaba isikhathi sokugoduka.

### Imibuzo ngemuva kokufunda

1. Bala amagama abangani endabeni.
2. Laba bangani babenqume ukuyokwenzani epaki?
3. Wena ubungaphatheka kanjani usuthole incwadi eyatholwa abangani ebhokisini nomcebo?
4. Bhala imisho emibili ngongafisa ukukuthola ebhokisini nomcebo.

# Ososayensi abancane

## Imibuzo ngaphambi ngokufunda

1. Wake walibona irobhothi?
2. Ubungakujabulela ukuzenzela elakho na?

Sigibela ibhasi lesikole nabangani bami uLiam, u-Aisha, kanye noThabo. NginguMia, ngifunda ibanga lesibili. Silibangise eRoboTech Center, lapho siyofunda ngezobusayensi. Singena sibingelele. Ukubingelela kukhombisa ukuhlonipha.



Phimisa  
umsindo



ng

Isho leli  
gama



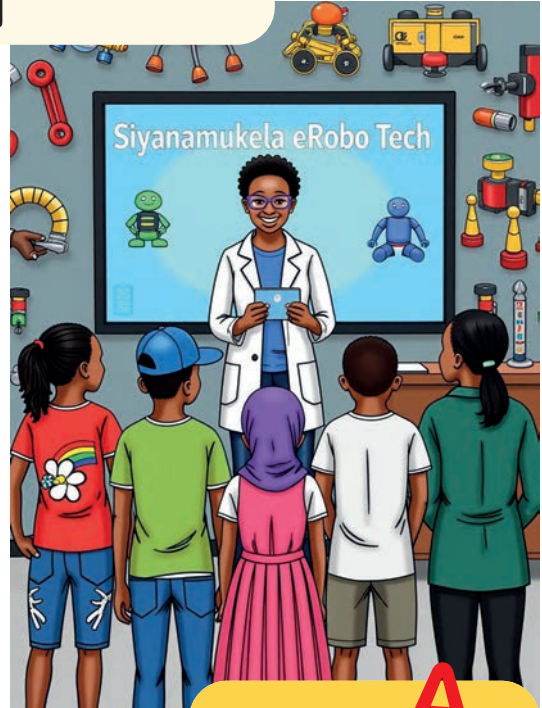
abangani

Sesifikile eRobo Tech, lapho kunesakhiwo esingangeholo lasesikoleni. Isakhiwo sinamafasitela acwebezelayo kanye nesithombe serobhothi elikhulu. Sangena ngaphakathi ngenjabulo, lapho uNksz. Zulu wethula khona uDkt. Njomane ofika njalo ngoLwezihlanu lapha. Wasiyisa egunjini elinonjiniyela bakhona la esikhungweni. Sonke kufanele sikhethe isethi ukuze siqale ukunjiniyela awethu amarobhothi. Mina ngikhetha isethi yamagiya amancane; ngizokhanda irobhothi elizoletha injabulo kubantu. Sakhetha ukwenza amarobhothi azosiza ngezindlela eziningi. Sasilokhu sijeqezana nabangani bami simamatheke. Lwabamnandi usuku lwethu. Sanikwa wona amarobhothi ethu kwathiwa izipho zethu. Halala!

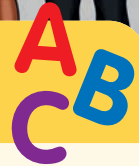
**Phimisa umsindo**



nj



**Isho leli gama**



injabulo

**mamatheka:** ukuhleka kancane.

## Imibuzo ngemuva kokufunda

1. Baya kuphi oMia?
2. Wawungazizwa kanjani usunikwa izicucu ukuze wenze irobhothi?
3. Dweba irobhothi.
4. Hlanganisa imisindo esethebulini ukwakha la magama ngemisindo oyifundile:

injabulo | ingane | iminjunju | ngena  
inja | ingoma | unjani | ingubo

a	<b>nj</b>	<b>ng</b>
e	bu	ne
i	lo	bo
o	ni	ma
u	mi	na

# Isihlahla sabangani

## Imibuzo ngaphambi ngokufunda

I. Ake usixoxele ngoseke waxabana nomngani wakho? Kwakwenzenjani?

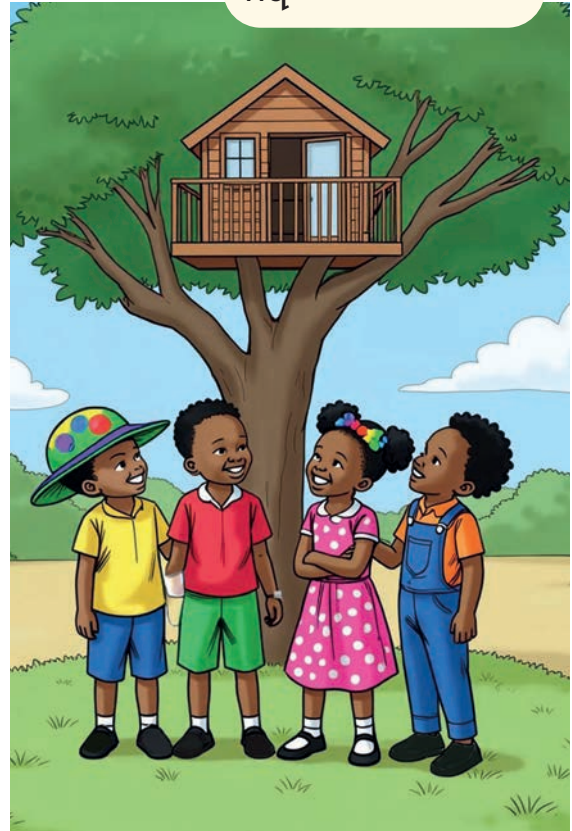
Endaweni yaseNquthu, kunabangani abane abangoNqobile, uMnqobi, uZuzile, noNokuzola. Babenendawo yabo ekhaya kubo kaNqobile, indlu yesihlahla. Ngolunye usuku banquma ukuyihlobisa. UNokwazi wayefuna ukufaka ushushuluza kodwa enokunqikaza.

UMnqobi yena ufisa ukuthi ibe neladi lentambo; uZuzile yena ufuna bafake uzwingi. UNokuzola wayefisa igumbi eliyimfihlo. Bagcina bevumelana ngokuyipenda kuphela. Awu, yasuka inkinga sekubangwa umbala kapende.

Phimisa  
umsindo



nq



**ukunqikaza:** ukungabaza okuthile.

Phimisa  
umsindo



nk



Isho leli  
gama

A  
B  
C

inkomo

Baxabana abangani. Umuntu nomuntu ufuna kukhethwe umbala wakhe. Akekho olalela omunye. UNokuzola wafuna kuvotelwe upende omuhle kunabanye. Wayenqena ukubaphendula uMnqobi; akezwani nomsindo.

**inkankane:** inyoni evamise ukuhlala emaweni.

UNqobile wabona ukuthi uMnqobi noZuzile babukeka bedangele. Wathembisa ukuphuma necebo. UMnqobi wavuma, “singapenda uhlangothi olulodwa oluluhlaza sidwebe namankankani, kanti olunye uhlangothi lungabomvana njengenkomo kamkhulu!” UZuzile yena wathi: “Angiyiboni inkinga, singakwazi ukupenda udonga ngombala womuntu ngayedwa. Akekho owadaza inkani, bavuma bonke. Ukudangala kwabo kwaphenduka ukumamatheka.

### Imibuzo ngemuva kokufunda

1. Yini eyayixabanisa abangani?
2. Bhala imisho emithathu ngomngani wakho.
3. Thola amagama amahlanu anomsindo **nq**, amahlanu anomsindo **nk**.
4. Bhala imisho emithathu ngamagama owathole ngenhla. Khetha amathathu umsindo ngamunye.

*Ungawuqedela ekhaya umsebenzi.*

# Ihlathi lezimanga

## Imibuzo ngaphambi ngokufunda

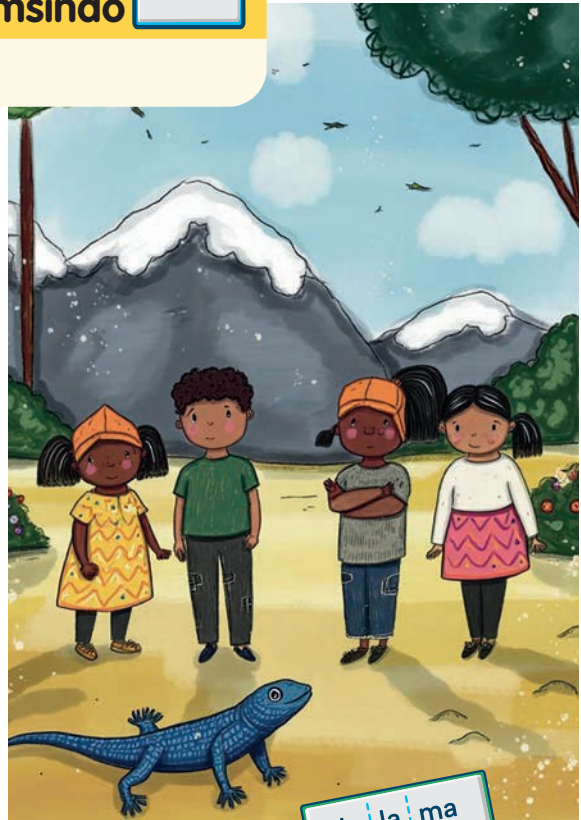
1. Yini ekufikelayo uma uzwa igama elithi ihlathi? Lisiza ngani ihlathi?
2. Imuphi umlingo ongafisa ukuba nawo? Kungani?

Phimisa  
umsindo



nt

Ehlathini elikhulu ngasentabeni, kwakuyikhaya lentulo. Le ntulo yayithanda ukulunguza abangani ababethanda ukuzontanta lapha ezintabeni. Laba bangane kwakunguNtando, uNtobeko, uNontuthuko kanye noLebo. Babehlala emizini engale kwentaba. Abangani babekuthanda ukuhlala bazidlalele ehlathini.



lu | la | ma

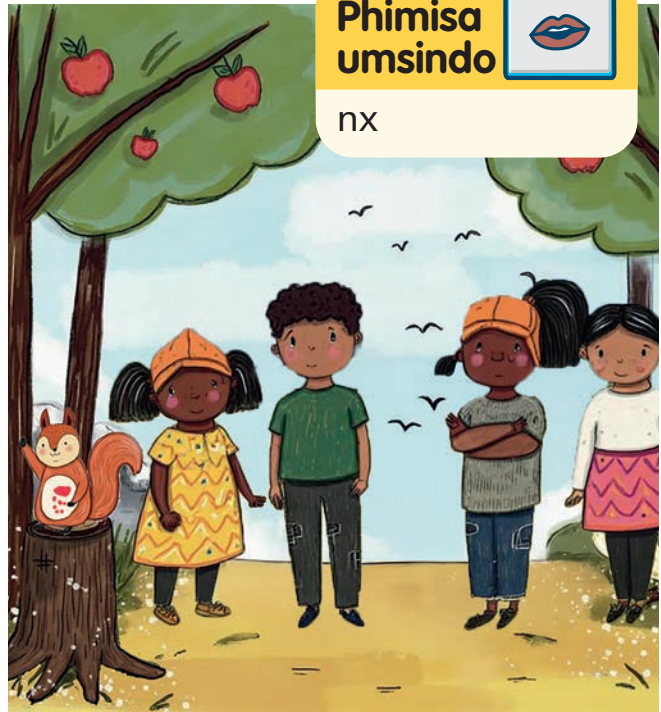
lulama

**Hlukanisa igama**

nontuthuko

**intulo:** isilwane esifana nesibankwa.

Ngolunye usuku, bathola ingwejeje okuthiwa nguNuttu, inenxeba. UNuttu wanesinxi, ehamba ediyazela waze wathi cababa esidulini sesihlahla. Abangani bazama ukumsiza kodwa uNuttu wayethukile, bamnxenxa, lutho.



Intulo yayibuka konke lokhu; phela yayinemilingo. Yaphephetha kwashintsha umoya, uNuttu wazizwa esebathemba. Bamsiza bambhandisha ngamahlamvu, bamenzela umbhede othokomele wokuthi aphumule. Baqoqa amantongomane ukuze adle abuyise amandla. Wajabula uNuttu, wabonga ububele babo. Wathembisa ukuthi isibusiso siyobuya kubona sesiphindiwe. Walulama wabe eseqhubeka nohambo. Grrrrr, kukhala isisu sikaNtando. Base beqiwe isikhathi sokuya kodla. Ebona lokhu uNtulo wenza imilingo isihlahla sathela ukuze badle.

**isinx:** isiyenzi noma isifuthefute.

Wayebonile ububele ababenzile besiza isilwane. Bajabula bebona izithelo ngoba sebezodla baqhubeke badlale. Babelithanda leli hlathi ngoba lalihlezi liluhlaza lingashi amaqabunga.



Babengazi ukuthi kungenxa kaNtulo. Baqhubeka lobu budlelwano lapho abangani besiza izilwane bese uNtulo abakhiqizele izithelo ukuthi badle. Leli hlathi kwaba ikhaya labo isibili.

### Imibuzo ngemuva kokufunda

1. Isiphi isilwane esinemilingo lapha endabeni?
2. Bhala amagama amathathu anomsindo **nt** atholakala endabeni bese ubhala amabili oziqambela wona.
3. Sifundo sini osithola kule ndaba?
4. Dweba ihlathi lemilingo ngendlela ofisa libe yiyo.

**ububele:** umuzwa womusa wenze into encomekayo.

# Insimu eyingqayizivele

## Imibuzo ngaphambi ngokufunda

1. Niyayazi insimu? Nake natshala?
2. Sixoxeleni ukuthi yini enake nayitshala noma enifisa ukuyitshala.

*[Kusekuseni ilanga libalele izinyosi nezivemvane zihamba zicobhoza izimbali. Ugogo usebenza kuyo le nsimu enhle enezimbali ezahlukahlukene. Abangani abedulayo babona insimu kagogo ikhanga.]*

Phimisa  
umsindo



ns



**UGogo:**

Ngiyanamukela bazukulu, le insimu yami yekhethelo. Ningahamba nibuke izimbali. Nibukisise ngoba zizonikhombisa izimfihlo.

**Indawo:** enkulu yokutshala izitshalo.

**UNonto:** (*Ngenjabulo*)

Ngempela? Insimu yezimfihlo le gogo? Zithini izimfihlo?

**UGogo:**

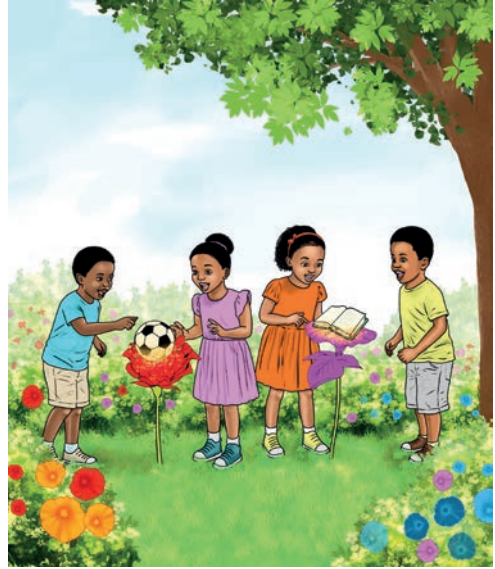
(*Ngokumamatheka*)

Isitshalo ngasinye kule ngadi sihlukile, njengalowo nalowo kini. Uma usithinta sizokubonisa ukuthi ithalente lakho lilele kuphi.

**UZama:** (*Ubamba isitshalo*) Bukani! Izimbali ezinemibala engingakaze ngiyibone. Asijwayele ukuyibona nsukuzonke le mibala.

**UNzuzo:** Lesi sitshalo sihle sibukeka njengebhuku; insambatheka-ke le. (*Bamukha ngensini abanye bebona exakekile; wayengazi ukuthi insimu yemilingo.*)

**UZenzele:** Bukani, lesi sinezithelo ezimise okwamabhola; siyidilinga enhle. Ngingadlala ngaso gogo? (*Bamukha ngensini.*)



Isho leli  
gama

A  
B  
C

insini

**insambatheka:** into exakayo, edidayo.

**UGogo:** Ubuwazi ukuthi singenza insipho ngamaqabunga ezimbali?

**UGogo:** Nonke nithole izitshalo ezimangalisayo; ngasinye sikhethekile ngendlela yaso. Njengalezi zitshalo; ngamunye kini unesipho sakhe esivela kuMdali.



**UNonto:**Yebo Gogo uqinisile, uZama udweba imidwebo engathi iyaphila. UNzuzo yena ubhala izindaba ezimnandi. URonaldo wethu uZenzele uyaliphenduphendula ibhola.

**UZama:** (*Athasisele*) Nangu uNomvelo wethu, uyazifela ngemvelo; nsukuzonke usixoxela okusha akufundile ngemvelo.

**UNzuzo:** Sonke siletha okuthile okukhethekile nokubalulekile, nomehluko ebunganini bethu.

**UZenzele:** Gogo abangani bami abeqiniso, bayangikhuthaza njalo; nakhu nami sengi zamazama ukwenza izimbali ngendlela.

**UGogo:** Nibusisiwe ngokuba abangani abakhuthazanayo; ingakho nensimu yami ibikhanya inibiza kude. (*Ephfumulela phezulu*) Nakhu okumele nikukhumbule bazukulu bami. Khumbulani, nonke nibalulekile ngendlela yenu. Insimi yami inamandla okukuvezela ithalente lakho.

**UNonto:** (*Ngenjabulo*) Siyabonga gogo, impela insimu yakho iwavezile amathalente ethu. Insimu yemilingo impela!

**UBonke:** Sonke sibalulekile namathalente ethu. (*kusho abangani bonke bephethe izimbali ezikhanyayo.*)

**UGogo:** Hambani kahle bangani bami.

## Imibuzo ngemuva kokufunda

1. Athini amagama abangani abakule ncwadi?
2. Zazenzani izimbali zensimu kagogo?
3. Ake uchaze insimu kagogo?
4. Bheka ubhale amagama anomsindo **ns** endabeni.
5. Amagama owabhale ngenhla wahlukanise ngamalunga.

## Umsebenzi: Senza ingadi kaGogo

### Izinto ezidingekayo:

- Iphepha
- Amakhrayoni, omaka, noma amapensela anombala
- Isikelo
- Igilu/into yokunamathelisa
- Izimo zezimbali ezisikiwe (uyazikhethela)

## Umyalelo

1. Qala ngokuxoxa kafushane ngomdlalo othi **Insimu eyingqayizivele** nokuthi umlingisi ngamunye ubenokuthile okukhethekile ngaye. Chaza ukuthi bazobe bezenzela ingadi eyingqayizivele yabo namuhla.
2. Ukudweba **imbali yabo eyingqayizivele**:
  - Nikeza umfundi ngamunye isiqeshana sephepha. Bacele ukuthi badwebe imbali. Emacembeni embali, bacele babhale noma badwebe into eyodwa ebenza bahluke. Isibonelo, umfundi angase adwebe imbali, abhale ukuthi uyakwazi ukudweba kahle noma adwebe isithombe sakhe edlala insimbi yomculo.
3. Ukwakha Insimu:
  - Uma abafundi sebeqedile izimbali zabo ngazinye, bacele ukuthi basike izimo zezimbali.
  - Banikeze ishidi elikhulu lephepha noma ibhodi lephosta bese ucela abafundi ukuthi banamathisele izimbali zabo kulo ukuze bakhe **ingadi eyingqayizivele**.

#### 4. Ukwabelana Nezingxoxo:

- Vumela umfundi ngamunye ukuthi abelane ngembali yakhe nekilasi, echaza ukuthi yini eyenza ihluke.
- Xoxani ngokuthi imbali ngayinye yengeza kanjani okuthile okukhethekile engadini nokuthi uma behlangene, ingadi yabo iba yindawo enhle ehluke.

#### 5. Isiphetho:

- Gcizelela ukuthi “njengasengadini yabo eyingqayizivele,” izimfanelo ezikhethekile zawo wonke umuntu zenza iqembu libe namandla futhi lihehe. Bungaza ukuthi amathalente ahluke awo wonke umuntu afaka isandla ebuhleni besizwe.