

IBANGA

1

INCWADI
KATHISHA

Platinum

Isisekelo Solimi

Platinum Isisekelo Solimi Ibanga | Incwadi Kathisha

Maskew Miller Learning (Pty) Ltd
10 Freedom Way, Milnerton, Cape Town, 7441

© Maskew Miller Learning (Pty) Ltd 2025

Wonke amalungelo agodliwe. Ayikho ingxengele yalolushicilelo efanele ye-*Copyright* kwishasha, ilondwe endaweni enokutholakala kuyo lula, noma idluliselwe phambili ngolunye umphuhliso noma ngenye indlela ye-elektronikhi, kusetshenziswa imishini, ngokwenza amagama, ngokukhululwa, ngokukhululwa, noma ngezinye izindlela, ngaphandle kwemvume ebhalwe phansi yalowo mntu onamalungelo alokho okushicilelwe.

Ukuthola imvume yokushicilela noma ukusebenzisa ingxengele yalolushicilelo, xhumana neqembu lamaLungelo nezimvume kule nombolo 021 532 6000 noma uthumele i-imeyili ku: rightsgranting@mml.co.za. Ukubika abaphula umthetho welungelo lomnikazi sicela uthumele umyalezo ku: copyright@mml.co.za.

Ishicilelwe ngowezi: 2025

ISBN: 978-1-779-83220-7
ePDF ISBN: 978-1-834-97851-2

Umshicileli ngu: Sphindile Mthethwa
Umhleli ophethe ngu: Nomaliso Mabhanga
Ihlelwe ngu: Dr PSEH Tloane
Ikhava yencwadi yahlawulwa ngu: MML Visual Design
Umdwebo kwikhava yencwadi ngu: MML Visual Design
Incwadi idizayinwa ngu: MML Visual Design
Umdwebo ngu: MML Visual Design
Ukuhlelwa kokubhala ngu: MML Visual Design
Igaywe abantu ngu: MML Visual Design

Ukuqinisekisa

Ababhanjane nomshicileli babonga imvume yokusetshenziswa kwalezi zithombe ezilandelayo:
P162a & P280b **BlueRingMedia/Shutterstock**; P298 a-j **Ksenya Savva/Shutterstock**

OKUQUKETHWE

Mfundisi othandekayo	v
Isingeniso	vi
Ukusetshenziswa kwalo mhlahlandlela	vi
Izinhlobo zokuhlukahluka	viii
Ukudala ikilasi elibandakanya wonke umuntu futhi elihlukahlukene	x
Ukuhlukahluka ekilasini	x
Bungaza ukuhluka kwawo wonke umfundi	xi
Ukuqaphela ukuchema kanye nelungelo	xi
Cabanga ngezinhlelo ozozisebenzisa	xii
IsiZulu uLimi Lwasekhaya esigabeni sesisekelo	xvi
Ukuthuthukiswa kolimi	xviii
Izinhlobo zokufunda	xxi
Izindlela zokufundisa ukufunda	xxii
Izinhlobo zemisebenzi yokufunda	xxiii
Imisebenzi eyahlukahluke	xxviii
Izinhlobo zokuhlola zesigaba sesisekelo	xxxii
Ngesikhathi sokuhlola	xxxii
Ukuhlola kusetshenziswa njengethuluzi lokufunda	xxxii
Ukuhlolwa kokufundiwe	xxxiii
Amazinga okuthuthuka ngokomqondo	xxxv
Uhlelo Lokuhlola: Ibanga loku-1 Ithemu yoku-1	xxxvii
Ithuluzi lokuhlola ukufunda	xlii
Kunani kuleli thuluzi lokuhlola?	xlii
Ukuhlola ikhono lokubiza amagama	xliv
Ibhentshimakhi ongayisebenzisa ukuhlola ikhono lokufunda	xliv
Irubhrikhi yokuphendula imibuzo	xlvii
Ithemu Yoku-1: Isiqondiso sokufundisa	1
Ukuhlola okuyikekela isonto lokuqala	7
Isonto loku-1: Isonto lokuqala	9
Isonto lesi-2: Mithetho yekilasi	15
Isonto lesi-3: Abangani bami	21
Isonto lesi-4: Abangani bami	26
Isonto lesi-5: Konke ngami	30
Isonto lesi-6: Konke ngami	35
Isonto lesi-7: Isikole sami	41
Isonto lesi-8: Isikole sami	47
Isonto lesi-9: Umndeni wami	52
Isonto lesi-10: Umndeni wami	58
Ithemu Yesi-2: Isiqondiso sokufundisa	63
Isonto loku-1: Esikoleni	71
Isonto lesi-2: Esikoleni	78
Isonto lesi-3: Imithetho yekilasi lami	83

Isono lesi-4: Imithetho yekilasi lami	89
Isono lesi-5: Siyjabula esikoleni	95
Isono lesi-6: Siyjabula esikoleni	101
Isono lesi-7: Ngingusomabhizinisi	106
Isono lesi-8: Ngingusomabhizinisi	113
Isono lesi-9: Masihlale siphilile	119
Isono le-10: Masihlale siphilile	125
Ithemu Yesi-3: Isiqondiso sokufundisa.	131
Isono loku-1: Isikhathi Sokulala	137
Isono lesi-2: Isikhathi Sokulala	143
Isono lesi-3: Ukudla Okunempilo	149
Isono lesi-4: Ukudla Okunempilo	155
Isono lesi-5: Masizinakekele	161
Isono lesi-6: Masizinakekele	168
Isono lesi-7: Amalungelo nezibopho	173
Isono lesi-8: Amalungelo nezibopho	180
Isono lesi-9: Imigubho ebalulekile	187
Isono le-10: Imigubho ebalulekile	194
Ithemu Yesi-4: Isiqondiso sokufundisa.	200
Isono Loku-1: Isimo sezulu esishintshayo	204
Isono Lesi-2: Isimo sezulu esishintshayo	208
Isono Lesi-3: Izinhlekelele zemvelo	213
Isono Lesi-4: Izinhlekelele zemvelo	218
Isono lesi-5: Amanzi	223
Isono lesi-6: Amanzi	228
Isono lesi-7: Isikhathi sokutshala	233
Isono lesi-8: Isikhathi sokutshala	238
Isono lesi-9: Izinkatho zokutshala	243
Isono le-10: Izinkatho zokutshala	247
Imisebenzana yokungqongileza nokuhlola	252
Amaphepha amasebenzana	263
Uhlu lokuhlola amarubhrikhi	300
Imibhalo nezibandakanyi ezincwadi ezinkulu.	312

Mfundisi othandekayo

Unamandla amangalisayo okukhuthaza, ukuqondisa, nokukhulisa abaholi bakusasa. Ngokwabelana ngothando lwakho, wenza okungaphezulu nje kokufundisa; utshala imbewu yomusa, isibindi, inhlonipho, noBuntu kuzo zonke izinhliziyi ezisencane.

Siyaqonda ukuthi akulula ngaso sonke isikhathi. Kunezinsalelo zokufundisa, ikakhulukazi ezindaweni ezingenazo izinsizakusebenza. Ngenselelo ngayinye obhekana nayo, wenza umehluko wangempela. Ukhombisa abafundi bakho ukuthi ikhono labo alinamkhawulo nokuthi bayabonakala, bayaziswa, futhi bayakwazi ukuzuza ubukhulu.

Yingakho-ke izinsiza zokufundisa zilapha ukuze zikweseke. Zihlelwe kucatshangwa ngezimiso ze-CAPS, egxile ekubandakanyekeni nasekudaleni indawo yokufunda lapho yonke imisebenzi kwazi ukuzibona. Izithombe, izindaba, kanye nezifundo zibonisa ukwehlukahlukana kwe-*practical* yendawo, kusiza wonke umfundi azizwe enomuzwa wokuba yingxenge yekilasi lakho.

Inhlalakahle yakho ibalulekile njengempumelelo yabafundi bakho. Sifake imithetho okuzinakekela ukuze sikugcine unomdlandla futhi unempilo ngoba siyazi ukuthi umfundi kwazi kahle, ikilasi lakho liyaphumelela. Injabulo yakho ayithinti nje kuphela ukufundisa kwakho, futhi nobudlelwano obakhayo nabafundi bakho, ababheke kuwe ukuze bathole imithetho yabo.

Njengoba iNingizimu Afrika iqhubeka nokuthuthuka ngokwemvelo Wokuchibiyela uMthetho Wezempendo Eyisisekelo (i-BELA), owasayinwa waba umthetho ngowezi-2024, umgomo wokwakha uhlelo lwempendo olulinganayo nolubandakanyayo ngokuya uqina. Iqhaza lakho kulo msebenzi libalulekile, futhi ukuqonda kokubili i-CAPS ne-BELA kuyinisekisa ukuthi ikilasi lakho liyindawo lapho abafundi balungiselelwa kahle ukuze baphumelele.

Ungamandla amakhulu oshintsho oluhle futhi uqinisekisa owenzayo ekilasini lakho mkhulu kunalokho ongakubona. Njengoba ufundisa, uzi ukuqondisa ngakini nje ngokuqondisa abafundi bakho kodwa ulolonga ikusasa lemiphakathi yetheko lakho nanye nomhlaba.

Siyabonga ngakho konke okwenziwe ngakho.

Ukusetshenziswa kwalo mhlahlandlela

Siyakwamukela kulo mhlahlandlela wothisha weSigaba Esiyisisekelo.

Le nsizakufundisa ibalulekile ngenxa yokuthi isekela othisha ngokusebenzisa uchungechunge lwethu lwezemfundo lwebanga loku-1, lesi-2, nelesi-3, elakhiwe kucatshangwa ngohambo lwakho lokufundisa. Lo mhlahlandlela uhlinzeka ngemininingwane esebenzayo kanye nezinsiza ezihloselwe ukuthuthukisa amasu akho okufundisa kanye nokucebisa ulwazi lwabafundi lwezemfundo.

Le ncwadi kathisha inikeza imihlahlandlela yamasonto onke. Isonto ngalinye lakhiwe ngendlela elandelayo:

- **Okuqokethwe, imiqondo kanye namakhono:** Inhloso yokufunda eyimile yamasonto yethulwa ngokwesilabhasi.
- **I-LTSM:** Izinsiza ze-LTSM okudingeka uthisha azilungiselele ukugqoka amasonto zibaliwe. Uthisha uyakhuthazwa ukuthi aqoqe noma agaye kabusha izinsiza ezilungiswayo njengezinsiza-kufundisa ukuze agcine izindleko ziphansi uma kungenzeka.
- **Izincwadi zokusebenzela zakwaDBE:** kubalulekile ukuthi usebenzise lencwadi yokusebenzela ukwandisa ulwazi kubafundi bakho.
- **Imisebenzi yokufundisa:** Imihlahlandlela yokufundisa inikezwa ngesifundo ngasinye ngendlela elula yesinyathelo nesinyathelo.
- **Ukuhlola:** Uthisha unikezwa inqubomgomo yokuhlola okungakahleleki.
- **Imisebenzi nezimpendulo:** Imisebenzi nezimpendulo zinikeziwe.
- **Amaphepha okuhlola afakiwe ekupheleni kwethemu ngayinye futhi ekupheleni kwalo mhlahlandlela kathisha kukhona amaphetha angasetshenziswa ukuhlola amakhono.**
- **Ukwesekwa kwabafundi abangama-izikhethekile noma abanezinga zokufunda:** Kunikezwa iseluleko mayelana nokuhlola yokubhekana nabafundi abasheshe bafunde nabadinga ukunakekelwa. Kwesinye isigaba abafundi badonsa kanzima ngemibono futhi badinga ukusekelwa kokufundisa. Masinikeza izihloko ezahlukahlukene ngaphansi kwalesi sihloko.

Ngenxa yalokhu, imihlahlandlela uqhubeka ukhuthaza ukuziqhayisa nokukhula okuqhubekayo, okugqogquzela madawo okufunda ngokubambisana lapho othisha bengaqhubeka bethuthukisa amakhono abo okufundisa futhi babe nomthelela omuhle empumelelweni yabafundi. Ngakho uyacelwa ukuba usebenzise lo mhlahlandlela, usebenzise imininingwane nezinsiza zawo ukuze uthuthukise ukuphumelela kwakho kokufundisa futhi udale okuhlangenwe nakho okushintshayo kokufunda ekhamsini lakho. Ngokubambisana, masinikeze abafundi bethu amandla ukuze baphumelele ezifundiseni nangale kwalokho.

Ukuhlukahluka, ukulingana kanye nokufunda ngokufanayo

Kule ngxenye, singathanda ukuthi ucabange ngekilasi lakho. Iba nomfanekisomqondo wezingane zihlezi phambi kwakho, ngayinye inendaba yayo, ulwazi kanye nezinsizelo zayo. Manje, khumbula isikhathi lapho omunye wabafundi bakho ethwala kanzima, mhlawumbe enomthwalo onzima noma

okuthile ngaphandle kwesikole okuthinta ukufunda kwabo. Wenzani ngaleso sikhathi? Uzobenza kanjani ukuba bazizwe bebalulekile, uzobaqondisa kanjani ebunzimeni ababebhekene nabo?

Ikilasi lakho ligcwele uhlobo olwehlukene lwabafundi ngokwezidingo zabo. Izwe lethu lisaqhubeka nokubhekana nokungalingani, kungaba kwezomnotho, ngokobuhlanga, noma kwezenhlalo, futhi lezi zinsalelo zivame ukuvela ekilasini lakho. Nokho kulapha, ekilasini, lapho ushintsho lwenzeka khona. Njengothisha, udlala indima ebalulekile ekuqinisekiseni ukuthi ingane ngayinye iyaphumelela, kungakhathaliseki ukuthi ivelaphi noma yiziphi izithiyo ebhekana nazo.

I-CAPS ibeka ukubandakanywa nokuhlukahluka emngombweni wayo. Akukhona nje ukukhanda ikharikhulamu kodwa kumayelana nokubona ikhono eliyinqayizivele kumfundi, nganye nganye, nokubasiza ukuba baphumelele. Siyaqonda ukuthi lokhu akulula ngaso sonke isikhathi. Insalelo ezikoleni eziningi ziyiqiniso, futhi njengothisha, uhamba phambili ukubhekana nazo.

Yingakho izinsiza zethu zokufunda nokufundisa zenzelwe ukukusekela. Zikhombisa umongo wendawo, zikhombisa abafundi umhlaba abawubonayo ezivivinywaneni, nasekuhloleni abahlangabezana nakho. Lezi zinto ezisetshenziswayo zicubungula umhlaba zamakhono ekilasini lakho, zikunikeza amathuluzi okufaka wonke umuntu, futhi ukusekela wonke umfundi, ngaphandle kokubheka isimo sabo.

Ngokusebenzisa lezi zinsiza, awugcini nje ngokufundisa isifundo obuhlangana nabafundi bakho lapho bekhona, uqaphela ubunzima babo, futhi uhlaziye banqobe izithiyo ababhekana nazo. Ngokwenza kanjalo, ubumba ikusasa eliqhakarane ngokweminyaka yonke ingane, lomphakathi wakini kanye neNingizimu Afrika.

Izinhlolo zokuhlukahluka

Kulolu chungechunge, sigxila ezinhlotsheni eziyi-10 ezibalulekile zezigaba zokuhlukahluka, ngasinye sikhethwe ngokucophelela ukuze kuqinisekiswa ukumelwa okubanzi nokubandakanyayo kobunikazi obuhlukahlukene, imibono, nolwazi.

Ithebula loku-1: Izinhlolo zokuhlukahluka

Isigaba sokuhlukahluka	Incazelo	Okusencwadini
1. Ukuhlukahluka kwamasiko nezinhlanga	Lokhu kusho ukumela amasiko nezinhlanga ezehlukene, ukuqinisekisa ukuthi abafundi bavezwa imibono namasiko ahlukene.	Sifake abalingiswa, abafundi, ezomlando namasiko ahlukahlukene. Izindaba nezibonelo zifaka amasiko nesini. Lokhu kusiza abafundi ukubaqonde ukunotha kwamasiko ahlukahlukene ngokunikeza ulwazi nezindaba zomlando nezamandla.
2. Ukuhlukahluka ngokakobulili	Ukuhlukahluka ngokobulili kubhekisela ekumeleleni kwabo bonke ubulili futhi kuhlanganisa izingxoxo mayelana neqhaza lobulili, ubunikazi obungebona onambambili, kanye nokushintshashintsha kobulili.	Uzoqapela ukumelwa okulinganayo kubo bonke ubulili embhalweni, emfundeni, nasezibonelweni. Sifake abalingiswa abangewona unambambili kanye nokushintshashintsha bobulili, kanye nemisebenzi ebekela inselelo indima yobulili yendabuko. Isibonelo, abafana namantombazane baboniswa bezibandakanya emikhakheni eyahlukene yemisebenzi, kusukela ekusizeni ekhishini kuya esayensini nobuciko, ukukhuthaza ukulingana ngokobulili.
3. Ukuhlukahluka kwezenhlalo nezomnotho	Lokhu kusho ukumela abantu abavela ezizindeni ezehlukene nezomnotho ezehlukahlukane ngekuxoxisana ngezindaba zokungalingani kwezomnotho.	Sifaka abalingiswa abavela ezimweni ezehlukene zezenhlo nezomnotho, sigqamisa izinselelo ezifana nokufinyelela emfundweni, ukunakekelwa kwezempilo. Lokhu kuvumela abafundi ukuthi bazibandakanye nezibonelo zangempela nezingxoxo ezibonisa izimo zezomnotho ezihlukahlukene, okwenza okuqukethwe kuhlobane kubo bonke.
4. Ukuhlukahluka kwezilimi	Ukwehluka kwezilimi kusho ukufaka izilimi eziningi kanye nokuhlonipha izilimi zesigodi ezahlukene ezikhulunywa imiphakathi eyahlukene.	Uzothola okuqukethwe okufaka izilimi eziningi futhi okukhuthaza abafundi ukuthi bahloniphe izilimi zesigodi ezahlukene. Siphinde safaka nezibonelo ezigqamisa ukubaluleka kokuhumusha, ikakhulukazi endaweni yomhlaba wonke, ukulungiselela abafundi ukuthi babandakanyeke ekuxhumaneni kwabo.

<p>5. Ukukhubazeka kanye nokufinyeleleka</p>	<p>Lokhu kugxile ekumeleleni kwabantu abakhubazekile kanye nokubhekana nezithiyo zokufinyeleleka.</p>	<p>Abalingiswa abakhubazekile bafakiwe, okuqinisekisa ukumelwa kwabo ezindabeni nasemisebenzini. Siphinde sixoxe ngezindaba zokufinyeleleka, noma ngabe okomzimba, ezobuchwepheshe, noma ezomphakathi, futhi sisebenzise ulimi olubandakanyayo, lomuntu wokuqala. Lokhu kwakha indawo yokwanelela kakhudlwana kubo bonke abalingiswa ukukhuthaza ukuzwelana okuqonda.</p>
<p>6. Isifundo ngezobulili nemibuzo yokuguqulwa kobulili, kanye nokufundiswa ngendlela efanayo.</p>	<p>Isifundo ngezobulili nemibuzo yokuguqulwa kobulili, kanye kokufundiswa ngendlela efanayo. Lokhu kuhlenganisa ukusetshenziswa kwenqwaba yobunikazi bobulili nobulili, ukukhuthaza ukwamukelwa nokufakwa kwabo bonke.</p>	<p>Izaxhiwo zomndeni zibalekile kuwo wonke amabhuku zininzi, umbono ohlukile. Sifake umbono ngomso ezihlola izindaba namandla kobulili obuhlukene, kanye nezingxoxo zokwazi nokucwasa, ukusiza abafundi baqonde futhi bahloniphe ukhululekile ukukhetha ubulili.</p>
<p>7. Ukuhlukahluka kwenkolo</p>	<p>Lokhu kuhlenganisa ukumela izinkolelo ezehlukene zenkolo kanye nokukhuthaza inhlonipho ngemikhutha ezehlukene.</p>	<p>Zincwadi lethu ziqukethe okwethula abafundi ezinkolweni ezahlukene kanye nemikhuba. Siphinde sakhuthaza inkhulumompendulwano yezinkolelo ezahlukene ukusiza ukukhuthaza inhlonipho nokuqonda kuzo zonke izinkolelo ezihlukahlukene. Imibono yezwe ifakiwe nayo; iqinisekisa ukuthi zonke izinkolelo ziyahlonishwa futhi zimeleleka ngendlela efanale.</p>
<p>8. Ukuhlukahluka kweminyaka</p>	<p>Ukwelwankhulana kweminyaka kuhlenganisa izingxoxo abantu abaneminyaka eyahlukahlukene kanye nokukhula.</p>	<p>Ezincwadini, uzothola abalingiswa nezibonelo ezisukela ezinganeni ezincane kuye kubantu abadala. Sigqamise ukubaluleka kobudlelwane phakathi kwezizukulwane, kanye nezihloko ezihlobene nobudala ezifana nokuthatha umhlalaphansi. Lokhu kusiza abafundi baqonde ukubaluleka kwawo wonke umuntu ngokwezigaba zeminyaka yabo emphakathini.</p>
<p>9. Ukuhlukahluka ngokwezindawo</p>	<p>Ukuhlukahluka ngokwezindawo kumele abantu nezinkinga ezivela ezifundazweni nasezindaweni ezihlukahlukene nasemhlabeni jikelele.</p>	<p>Lezi zincwadi zihlenganisa okuqukethwe okuvela ezifundazweni ezahlukene nasemhlabeni jikelele. Siphinde sibe nezibonelo ezivela emadolobheni nezasemaphandleni, ezibonisa izinselelo eziyingqayizivele kanye nezinzuzo zendawo ngayinye.</p>

10. Ukwehlukahlukana kwengqondo nokufunda	Lokhu kubhekiswe ezitayeleni zokufunda ezahlukene amakhono, nomehluko ongokwengqondo.	Samukele ukwehlukahlukana kwengqondo nokufunda ngokuhlanganisa izindlela zokufundisa ezihlukahlukene ezibhekana nezitayela zokufunda ezihlukene. Imisebenzi yakhelwe ukubhekelela inhlobonhlobo yezidingo zokufunda, ikhuthaze indawo yokufunda ebandakanyayo. Singeze nokufunda kwangaphambili okusheshayo, kubonakale ulwazi lwanaphambili.
---	---	---

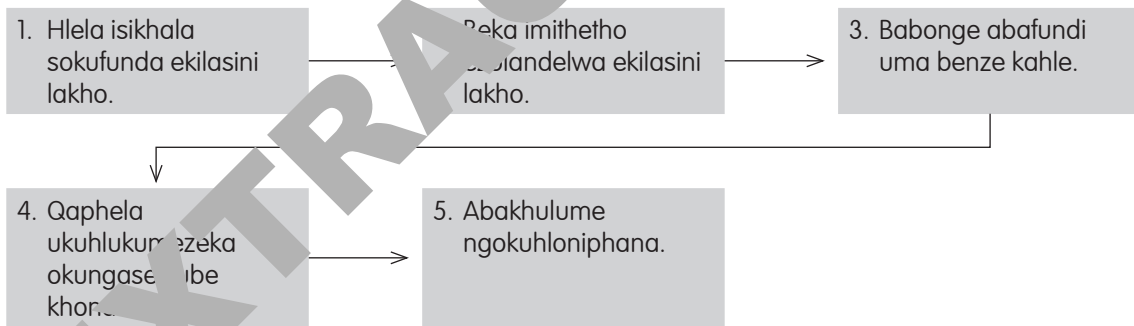
Ukudala ikilasi elibandakanya wonke umuntu futhi zihlukahlukene

Lo mhlahlandlela kathisha uklanywe ngokuhlanganisa, ukwehlukahlukana nokuhlangana engqondweni. Uhlinzeka ngezinsiza ezikusekela ekudaleni izindawo zokufunda ezibandakanyayo nezinhlelo zezigaba eziyi-10 ezibalulekile zokuhlukahluka ethebulelweni okungaphambili.

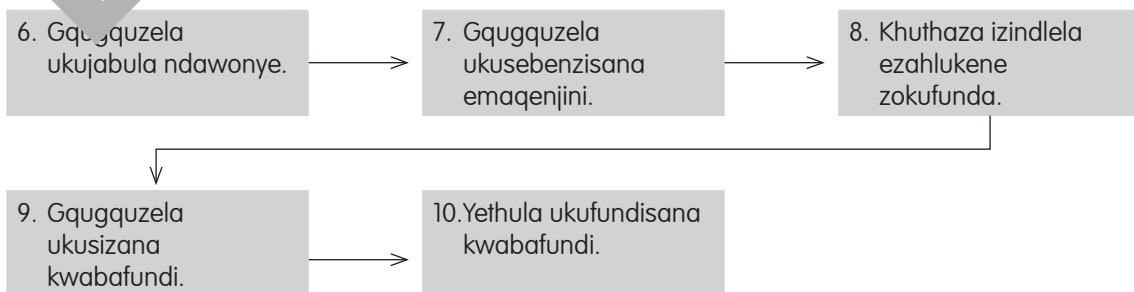
Ukuhlukahluka ekilasini

Njengothisha, indima yakho ukuqinisekisa ukuthi ikilasi lakho ngindawo lapho ukufunda, ukujabula nokuhlonipha konke kuhlangana khona. Nawa amasu ayi-10 ongawasebenzisa ukuze ugcine izinto zijabulisa, ziphephile, futhi zakha abafundi bakho:

Amasu 1-5: Ukwakha indawo yekilasi efanele wonke umuntu



Amasu 6-10: Ukukhuthaza ukubambisana nokugubha ukwehlukahlukana ekilasini



Bungaza ukuhluka kwawo wonke umfundi

Kubalulekile ukuthi abafundi bazibone bona kanye nolwazi lwabo oluhlukene lubonakala ekilasini. Lokhu kusho ukukhombisa ukuhlukahluka ngokubukeka komzimba, izilimi, ubuwena, amasiko, inkolo, ubulili, ukukhethwa kwezocansi (okubandakanya i-LGBTQ+), ubudala, namakhono okuqonda. Izincwadi zethu zinabalingiswa abavela ezindaweni ezihlukene ukuze babonise lokhu kuthokozelwa okuhlukahlukene. Sikhetha ngokucophelela izithombe, umsebenzi wobuciko, nokuqukethwa okumelela abantu abahlukene, indawo, namaqiniso akha iNingizimu Afrika nangale kwayo.

Sikukhuthaza ukuba wenze okufanayo ekilasini lakho. Sebenzisa ukuxoxa izindaba ukuze ubonise ingemuva elihlukahlukene, ubonise izithombe zasemaphandleni nezasemadolobleni ezikhulume ngabantu abanamakhono ahlukene, amakhono okuqonda, nobunikazi, okufunda phantsi nezifundo zobulili. Xoxa ngezinkolo ezehlukene, ubudala, nokuhlukahluka kobulili, futhi ngezizimo zezomnotho ezihlukahlukene abafundi bakho abangase bahlangabezane kubo. Zinike isikhathi sokufundisa ngokuxhumana namanye amazwe kanye nabantu e-Afrika ukuqonda kanye nomhlaba wonke. Ngokwenza lokhu, usiza wonke umfundi azizwe ebalulekile, ebalulekile, futhi eyingxenge yomphakathi omkhulu womhlaba.

Ukuqaphela ukuchema kanye nelungelo

UNksz. Adams ubefundisa isifundo ngamasiko. Abafundi bakhe babephuma ezimweni, futhi wajabula kakhulu lapho ebona ukuthi ingxoxo izohamba kanjani. Lapho isifundo siqala, wacela abafundi bakhe ukuthi bazibandakanye nesiko nomzinkolelo ezivela emindenini yabo.

ULebo, intombazane ezithembayo, wakhuluma baqala, echaza amasiko omndeni kakhisimusi wobuKhristu. Kwalandela abanye abafundi abambalwa, bexoxa ngamaholide afanayo kodwa lapho sekuyithuba lika-Amina, wangabazisa. Umndeni ka-Amina wawusebenzisa inkolo yobuSulumane, futhi wabelana ngolwazi lwakhe ngokubhala i-Eid. Cishe ngokushesha, abafundi abambalwa baqala ukuhlebelana, futhi omunye umfundi engazi ukuthi amazwi akhe athinta kanjani, wabubula, “Akulona iholidi langaphela.”

UNksz. Adams wafunda kancane, wacela ikilasi ukuthi lithi ukucabanga licubungule kancane okukhulunyiwe. Kusho ukuthi ukungashayi ndiva amasiko nezinkolelo zomunye umuntu?

Ungazizwa kancane noma uma kushaywa indiva okushoyo? Kuthiwe usuku olubalulekile kuwena kuthiyabalulekile noma akusilo iqiniso ukuthi lubalulekile? Abafundi bathula cwaka, baqala ukucabanga kanzulu ngabakushilo kuzakwabo.

Wabe esebenza ukubaluleka kokukuqonda nokuhlonipha izinkolelo zabanye abantu, wasebenzisa isihlo esivelele u-Amina ukubafundisa kabanzi. UNksz. Adams akazithethisanga izingane noma azenze zizizwe kabuhlungu, kodwa waxoxisana nabo wabenza babona ukubaluleka kokuhlonipha wonke amasiko, ngisho nalawo esingawazi noma esingawajwayele. Abafundi bacabanga kanzulu ngokuchema nokusha noma nokudala, becabanga ukuthi kungaba nomthelela endleleni obuka ngayo izinto noma abanye abantu ngisho ungaqondile ukubabuka ngandlela thile.

Ngesikhathi sesifundo sikaNksz. Adams

Ukuchema nokuqagela kungavela kungahlosiwe	Wonke amazwi abalulekile	Khuthaza ukuzindla nokucabanga
Hlela inkundla yenkulumo mpendulwano	Inselelo yokufunda umcabango	Thuthukisa ilukuluku nokuvuleleka

Cabanga ngezinhlelo ozozisebenzisa

Izinhlelo zakhiwe izingxenye ezihlukene ezisebenza ndawonye ukuze kuzuzane okanye ekilasini lakho; uhlelo kungaba ukuthi abafundi bayilandela kanjani imithetho, babanda kanjani kuwe, noma ukuthi badlala kanjani futhi babelane kanjani ngolwazi abanalo. Izinhlelo zikhona futhi emindenini nasemiphakathini, lapho abantu beseka futhi besebenza khona ndawonye.

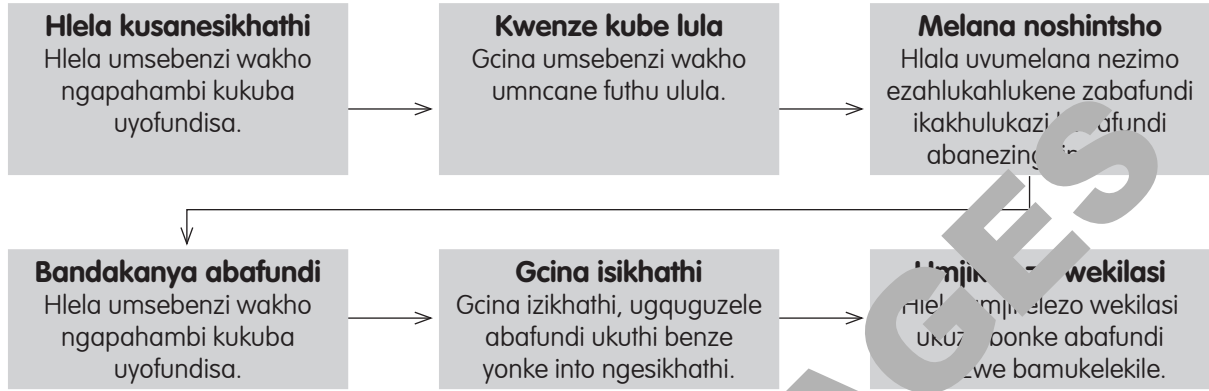
Qondisisa izinhlelo ezisiza abafundi ukuthi babone ukuthi ingxenye ezihlukene, njengabantu, izindawo, nemithetho, zixhuma futhi zixhumana kanjani. Lezi ngxenye elibalulekile lokwakha ukucabanga okujulile, futhi lingaqala kusenesikhathi ngokusebenzisa ulwazi lwabafundi.

Ezincwadini zethu zesigaba sesisekelo, sethula ukuthi abafundi bangahlelo lokubonisa izimo zokuphila ezihlukene, amaqiniso omphakathi, nabantu abahlukahlukene. Lokhu kuhlunganisa imiqondo efana nobuntu futhi kumele abafundi bezinhlangothi ezihlukene, ubulili, nezinhlelo zomndenini, okukunikeza indlela yokwethula abafundi ekucabangele okunomngi. Nansi eminye imisebenzi elula yokusiza abafundi bakho ukuthi bacabangele ngezinhlelo.

<p>Gqugquzela ukuziphatha</p> <p>Xoxani nabantwana ngalokho okubalulekile kukhona nokuziphatha kahle emndenini ezincwadini, emapamasekhaya. Abaxoxa ngalokho abafundile ngendlela eziziphatha.</p>	<p>Kilasi akube yindawo yokuhlala</p> <p>Akube nabantwana abazoxoxa ngempilo yasemakhaya kanye nempilo yasedolobheni. Abaxoxe ngolwazi abanalo ngokuhlala kulezi zindawo.</p>	<p>Bafundise ukuthi kufundwa kanjani</p> <p>Gqugquzela abafundi ngezindlela zokuthola ulwazi, kungaba semndenini, kubangani, ezincwadini, nge-inthanethi kanye nasesikoleni. Xoxisanani ngokuthi baluhlunganisa kanjani ulwazi.</p>
---	--	--

Ukuphatha izifundo ngempumelelo

Umdwebo olandelayo ukhombisa indlela ongaqinisekisa ngayo ukuthi isifundo siba yimpumelelo:



Indlela yokufundisa ye-variation theory

Le thiyori yokuhlukahluka iyindlela yokufundisa egxile enalapho abafundi ababona futhi baqonde ngayo izimo ezibucayi zomqondo ngokubona ukuhlukahluka kulokho okufundiswayo. Ummongo wokuthi abafundi babamba umqondo ngokujula ngokuhudlwana lapho bechayeka ezibonelweni eziningi nokungezona izibonelo ezigqamisa umehluko nokufundiseni esifundweni esithile.

Umqondo oyisisekelo we-*Variation Theory* ukuthi abafundi bafunda kangcono uma bebona umehluko nokufana kulokho okufundiswayo. Iphakathi abafundi abakwazi ukuqonda ngokugcwele into ngaphandle uma beyibona ngokuhlala nomia izimo ezahlukene. Ngokukhombisa kokubili ukuthi umqondo uyini nokuthi unjani, abafundi bagxila kulokho okubalulekile ngempela.

Ngamagama alula, ukuze abafundi umqondo kahle, udinga ukubona ukuthi yiziphi izinguquko nokuthi yini ehlala ifana. Lokhu kubonisa ukuthi baqaphele izingxenye ezibalulekile zombono. Njengothisha, singasiza ngokubonisa izibonelo ezahlukene ezigqamisa lo mehluko, senze kube lula kubafundi ukuqonda ngokujikelezile.

Izimpawu ezibalulekile zethiyori ehlukehukene ekufundiseni nasekufundeni zihlanganisa lezinto.

1. **Ukugqamisa izimo ezisemqoka:** Uthisha ukhomba izimo ezibalulekile zomqondo bese ethula izimo ezibucayi ezigcizelele lezo zimo.
2. **Amaphethini okwehlukahlukana:** Uthisha usebenzisa amaphethini ahlukehukene ukuze asize abafundi babone ukuthi yikuphi okuhlukahlukayo nalokho okungashintshi. Lawa maphethini ahlanganisa:
 - **Ukugqama:** Ukwethula izibonelo eziphikisanayo ukuze kugqanyiswe umehluko.
 - **Ukuhlanganisa:** Ukubonisa ukuhluka ngaphakathi komqondo ukuze ubambe ukusetshenziswa okubanzi.
 - **Ukwehlukana:** Ukwethula uphawu ngalunye lodwa ukuze sigxile ekubalulekeni kwalo.
 - **Ukuhlanganisa:** Ukuhlanganisa izimo ezibucayi ukubona ukuthi zisebenzisana kanjani ngaphakathi komqondo.

Ukucabanga nokuzindla

Thatha imizuzu embalwa usuku ngalunye ukuze uphumule ngokuzijwayeza ukuqaphela.

Yakha umphakathi osekelanayo

Hlanganyela noma wakhe iqembu lozakwenu ukuze uthole ukwesekwa nokufunda.

Indlela yokuphila enempilo

Gcina ukudla okunempilo, hlala umatasa futhi unakekele izwi lakho.

Impilo yengqondo nenzwelo

Ukufundisa izingane ezisencane ezingavikelekile kungaba nzima ngokomzwelo.

3. **Ukuqonda:** Ngokubona izibonelo ezehlukene, abafundi bangakwazi ukubona ukuthi yiziphi izimo ezibalulekile futhi bathuthukise ukuqonda okujulile komqondo.

Impilo kathisha

Ukufundisa kuwumsebenzi onencindezi enkulu futhi enobuhle kakhulu obuningi. Akuwona nje umsebenzi onzima, onezinsalelo eziningi zokuthola izinsiza, kuba letha nezingozi eziningi ezweni elinamazinga aphezulu obugebengu nodlame. Ngenxa yalezi zinto kufanele ube nezinhlelo ezikhona ukuze uzinakekele, unciphise futhi ucubungule ulwazi lwabo kanye nezinto ezibakhathazayo.

Ukusebenzisa izindlela zokudala ezinzwa ekufundeni

Ukufaka imisebenzi gobuciko ezinhlelweni ezehlukene zansuku zonke kungabandakanya abafundi futhi kuthuthukise umbono wabo ngokufunda. Umculo, isibonelo, usetshenziswa emhlabeni wonke ukuze udale umoya omuhle, ngokwesimo sengqondo, futhi usekele ukuthuthukiswa kwezemfundo. Ucwango lwe-umculo usiza ukucubungula ubuchopho, inkulumbo, nokugcina ukufunda. Umculo, ngokwesimo, qiniseka ukuthi awubathinti kabi abafundi abanekinga yezinzwa noma ukuzwa ngokubandakanya abafundi ekukhetheni umculo ukuze uwenze ube okuhlakaniphe nakho okubandakanyayo.

Umnyakazo, umculo, nokucula kungakhuthaza abafundi futhi kusize ekugcineni ngokuphindaphinda, imvumelwano nokuzivocavoca umzimba. Le misebenzi yengeza izinqubo ezihlukahlukene zansuku zonke futhi yenza ukufunda kujabulise.

Ezinye izindawo

Ukwethula izindawo ezihlukene noma ukushintsha ukusethwa kwekilasi kungakhuthaza ukufunda. Ngezinye izikhathi ukubamba izifundo ngaphandle noma ukulungisa kabusha indawo yokufundela kungasiza. Uma ukuvakasha kwangaphandle kwekhampasi kungenzeki, izinguquko ezilula zekilasi, njengokushintsha izinhlelo zokuhlala noma ukubonisa izinto ezintsha zingacina imvelo ishintshashintsha.

Uhambo, uma kungenzeka, luhlinzeka ngamathuba okufunda okuhlangenwe nakho. Njalo qinisekisa ukuthi uyazithobela izinkombandlela zesikole sakho lapho uhlela uhambo. Uma ukuvakasha

kungeyona inketho, cela abazali noma umphakathi ukuthi unikele ngezinto ezihlobene nezihloko ezifundwayo ukuze wenze ukufunda kuhehe kakhudlwana.

Ukuphathwa kwekilasi

Ukuphatha amakilasi amakhulu, okuvamile ezikoleni eziningi, kungaba inselele. Ukusungula imihlahlandlela yekilasi lokusebenzisana kusiza ukukhuthaza umphakathi ofundayo onenhlonipho, obandakanyayo. Ukufaka abafundi ekubekeni izinjongo zokuziphatha nokufunda kuthutha ubunikazi bemithetho nokulindelwe.

Amasu okuphatha amakilasi asebenzayo ahlanganisa:

- **Ukubeka imingcele:** Xhumana ngokucacile nemithetho nemingcele kusobala emithetho futhi uhlale uyiqinisa.
- **Umjikelezo nesakhiwo:** Ukugcina izinqubo ezingashintshi kusiza ukuphatha amakilasi amakhulu.
- **Umsebenzi wontanga:** Ukubhanqa noma ukuhlanganisa abafundi ukuqezela ukufundisa kontanga, ukubambisana, kanye nesibopho sokwabelana.
- **Izinsiza ezibonwayo nezilalelwayo:** Sebenzisa izinsiza eziphambili (umaphosta, izimpawu zezandla) kanye nezimpawu zomsindo (umculo, ukushaya izandla) ukuze uqinise iziyalezo.
- **Iziyalezo ezehlukene:** Hlela izifundo ukuhlanganisa nezana nezidingo ezahlukene zabafundi ekilasini.

Ukuphathwa kwamakilasi amabanga amaningi

Emakilasini anamabanga amaningi, laphe amabanga ahlukene efundiswa ndawonye, kubalulekile ukuqonda amakhono omfundi ngamunye. Abafundi ngemisebenzi ebandakanya bonke abafundi futhi unikeze imisebenzi ngokwehlukelwe emazingeni abo ngabanye. Sebenzisa umsebenzi ngababili noma weqembu ukuze uvumele abafundi ukuthi bahlanganyele, kungakhathaliseki ukuthi banamakhono afanayo noma ahluke. Imisebenzi ye-scaffold ikuqinisekisa ukuthi abafundi bawo wonke amakhono bahlalele ngokuziqinisa futhi bangakwazi ukufaka isandla ngendlela ephusile.

Ukusekela izifundo zokufunda ezihlukahlukene

Kunoma yiliphi ikilasi, kungakhathaliseki ukuthi linabafundi abayi-15, 20, noma ama-40 nangaphezulu, zoba nezinhlobo ezintathu zezitayela zokufunda. Lezi izindlela abafundi abathatha ngazo, bacubungule, baqonde futhi bakhumbule ngazo ulwazi. Ukwakha indawo yokufunda ebanakalayo kubalulekile ukuhlonza nokweseka indlela yokufunda yomfundi ngamunye futhi ulungiselele zakho zokufundisa ukuze zihlangabezane nezidingo zabo.

Ngokohlelo lwe-VARK, izitayela zokufunda zihlelwe ngezigaba ezine kanje:

- **Ukufunda okubonwayo/kwendawo:** Isitayela esivame kakhulu. Laba bafundi benza kahle kakhulu uma ulwazi lwethulwa ngendlela ebonakalayo, njengemidwebo, amashadi, nokubhekwa.
- **Ukufunda ngokuzwayo:** Laba bafundi bacubungula ulwazi kangcono ngokuzwa, ukukhuluma, nokulalela. Izingxoxo nezincazelo zomlomo zibasiza baqonde imiqondo emisha.
- **Ukufunda nokubhala:** Abafundi abakulesi sigaba baphumelela ngokufunda nokubhala. Basebenza kahle kakhulu ekucubunguleni ulwazi olubhaliwe futhi banamakhono aqinile etiyetha.

- **Ukufunda ngezandla/ngokuthinta:** Laba bafundi bancamela ukufunda ngokwenza. Bacubungula ulwazi ngokuthinta, ukunyakaza, kanye nokuhlangenwe nakho kwezandla, benza kahle kakhulu emisebenzini ebonakalayo.

IsiZulu uLimi Lwasekhaya esigabeni sesisekelo

Amakhono okugxilwe kuwo kwezemfundo yamabanga aphansi yilawa:

- Ukulalela nokukhuluma
- Ukufunda nemisindo
- Ukubhala kanye nokubhala kahle ngesandla

Amakhono	Isikhathi
Ukulalela nokukhuluma	Imizuzu eyi-15 ka-4 ngesonto
Imisindo	Imizuzu eyi-15 nsukuzonke
Ukufunda	
Ukufunda ngokuhlanganyela	Imizuzu eyi-15 ka- 5 ngesonto
Ukufunda ngakwamaqembu	Imizuzu eyi-15 ka-5 ngesonto (amaqembu amabili ngosuku)
Ukufunda ngokuzimela	Kwenzeka nsukuzonke
Ukubhala	Imizuzu engama-20 ka-3 ngesonto
Ukubhala kahle ngesandla	Imizuzu eyi-15 ka-3 ngesonto

Uhlelo lokufunda lulandela indlela efanayo masonto onke. Lolu hlelo luthathwe ekwabiweni kwesikhathi ngokwenqubomgomo ukufunda yamabanga aphansi. Isikhathi esibekiwe siba sincane (amahora ayi-7) noma sibe siningi (amahora ayi-8) ngokwezidingo zabafundi.

Uhlelo lwesonto

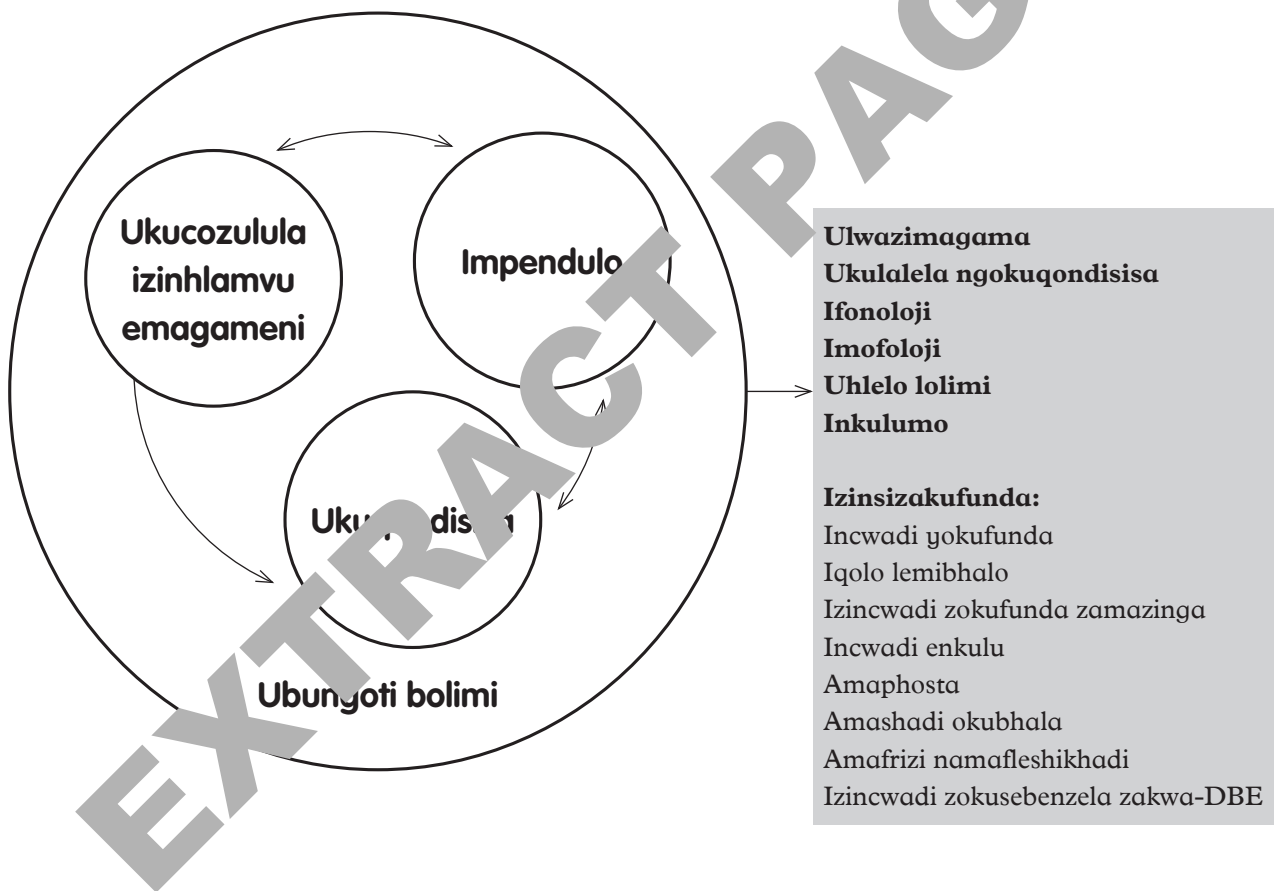
1. Uhlelo lokufunda lwamabanga ancwadi efanayo masonto onke.

UMsombuluko	Ukufunda ngokuzimela	Ukufunda ngokuhlanganyela	ULwesithathu	ULwesine	ULwesihlanu
Ukulalela nokukhuluma	15	Ukulalela nokukhuluma	15	Ukulalela nokukhuluma	15
Imisindo	15	Imisindo	15	Imisindo	15
Ukufunda ngokuhlanganyela	20	Ukufunda ngokuhlanganyela	20	Ukufunda ngokuhlanganyela	20
Ukufunda ngamaqembu	30	Ukufunda ngamaqembu	30	Ukufunda ngamaqembu	30
		Ukubhala kahle ngesandla	15	Ukubhala kahle ngesandla	15
		Ukubhala	20	Ukubhala	20
Isikhathi sesiphelele: Amahora angu-8 ngesonto					

- Lokhu kwenza ukuthi kube lula kuthisha nabafundi ukululandela.
 - Abafundi bangazilungiselela umsebenzi olandelayo uma sebelwazi uhlelo.
2. Inqubo isuselwe ohlelweni lwe-CAPS ngokwesibalo esiphelele sesikhathi.
 3. Veza le nqubo ekilasini lakho uzame nokuyazi ngekhandanda.

Ukuthuthukiswa kolimi esiGabeni sesiSekelo

Umhlahlandlela oku-CAPS uthi la makhono alandelayo kufanele athuthukiswe lapho kufundiswa ezingeni loLimi Lwasekhaya kanye noLimi Lokuqala Lokwengeza: ukulalela nokukhuluma, ukufunda nemisindo, ukubhala nokubhala ngesandla nokuthi kufanele kube nezinqubo ezilandela ezisetshenziswa ebangeni ngalinye.



Ukuthuthukiswa kolimi

Ukucozulula izinhlamvu emagameni

Ukucozulula izinhlamvu emagameni ikhono lokuhumusha igama lisuka kokugayiwe liye enkulumweni ngokusebenzisa ulwazi lwangaphambili lwezincwadi zomsindo nophawu (uhlamvu). Ukukhipha amakhodi kuyingxenye ebalulekile yokufunda ukufunda. Umfundi ucozulula izinhlamvu ulwazi ukubona ukuthi imisindo yakhiwe izinhlamvu. Lokhu kuzobasiza ukuhlakaza amagama ulwazi ngokubona izinhlamvu ezenza umsindo. Loluhungechunge lusekela ukuqoshwa kakhodi ngantanto ezingasetshenziselwa ukufunda okwabelwana ngazo nokuzimela, kanye nencwadi yokufunda, i-graphem frieze namafleshi khadi.

Ukuqonda kanye nempendulo

Abafundi besigaba sesisekelo kufanele bakhuthazwe ekuthuthukisweni kolimi lwabo ngokusebenzisa imisebenzi yoqondisa kanye nokunikeza izimpendulo. Lokhu kusiza ekuthuthukiseni ukucabanga okujulile namakhono okuxazulula izinkinga kanye nokulungiselela abafundi izinselelo zokufunda umbhalo onzima kakhulu. Imibuzo kufanele ibuzwe ngesikho sokufundwa izincwadi ezinkulu, i-Anthology kanye necwadi yokufunda. Amafleshikhadi namaposta angasetshenziswa futhi ekuqondeni nasekuphenduleni imisebenzi.

Ukulalela

Ukulalela ulimi lusetshenziswa ngempumelelo kubalulekile. Kuhlinzeka ngemodeli kubafundi ukuze bacwengisise futhi bathuthukise ndlela yabo yokukhuluma nokuphimisela. Kubafundisa ukucabanga nokucubungula ulwazi lweyona belalela lapho bethuthukisa eyabo imibono. Kunamathuba kulesi sifundo nokuxoxisa noma ukufunda izindaba futhi uyakhuthazwa ukuthi usebenzise ezinye zezinto ezibonisa imibono yabo lapho ubona kufanelekile. Ukufundela abafundi izindaba bese ubabuza imibuzo ngalokho abasanda kukuzwa kuyasiza ekuhloleni amakhono okuqonda. Kuphinde kuqinisekisa ukuthi lokuhlala uthule futhi ugxile ezwini elikhulunywayo.

Ukukhuluma

Imisebenzi yokukhuluma igqanyiswa kulesi sifundo. Yenza abafundi ukuthi bahlale futhi baveze imibono ngokuzethemba nangokuzigqaja. Inikeza amathuba okuba bazicabangele, bahlale, bacwengise ulwazi lweyona baxoxe ngezindaba ezibonisa inhlonipho ngemibono yabanye abantu ngaphandle kokuvumelelana nayo. Imisebenzi kumele isetshenziselwe ukusiza abafundi ukuthi bathuthukise izinkulamo ezimfishane, benze ngcono ukuhambisana nokucaca, bazijwayeze ukuhlehlisa nokuxoxisana nabanye, ngaleyo ndlela kuthuthukiswe amakhono azobanika amandla okusebenza ngempumelelo emhlabeni womsebenzi ngokuhamba kwesikhathi. Amafleshikhadi kanye ne-grapheme frieze kungasetshenziswa njengamathuluzi okuqalisa imisebenzi yokukhuluma elula.

Ukufunda

Ukufunda kuyindlela yokufunda ebalulekile futhi kuyindlela okungazuzwa ngayo ukukhula nokuthuthuka impilo yonke. Umfundi onekhono angakwazi ukufinyelela olwazini, avakashele kabusha, abuyekeze futhi azindle ngolwazi ngenxa yokuthi lubhalwe phansi. Kubalulekile ukuthi ukhuthaze uthando lokufunda kubafundi. Ukusebenzisa ukusakazwa kwemisindo esifundweni kusiza ukukhulisa amakhono okufunda.

Eceleni kwekhono lokufunda kukhona ikhono elibalulekile lokuqonda. Njengomgqungqumane, ukufunda ukuqondisa abafundi ukuze bakhophe incazelo embhalweni, ubenze bathuthuke besaba ekucaciseni imibuzo ewuhlobo lwezwi nezwi, baye ekuzuzeni ukuqonda okujulile ngokusebenzisa imibuzo engasho lutho, yokuhlola neyobuciko kanye nokuhlaziya nokuhlanganisa izinto.

Ukubhala

Imisebenzi yokubhala iyanikezwa ukuze abafundi bakwazi kuxhuma ngemiqondo ngokulandisa, ukuqamba, inkulumompikiswano, kanye nokubika, ukufingqa kanye nokulandisa kabusha izehlakalo. Ikhono lokubhala amanothi, imiyalelo kanye nokubhala izibonisi zomlangane noma ezisemthethweni zezinhlobo ezahlukene nakho kubalulekile. Zithuthukiswa ngokusebenzisa izivivinyo zolimi nohlelo lolimi kusetshenziswa izenzo, amabizo, izichasiso, izihlanganiso, okunye ukuze kuthuthukiswe indlela yokukhuluma evamile. Njengothisha kufanele uzizwe ukhululekile ukwandisa uhlobo lokubhala onomuzwa wokuthi ludinga ukugcizelelwa nesikhathi esithile ukuze luvumelane nezidingo zekilasi lakho. Amashadi okubhala ngesantshantsho angasetshenziswa njengethuluzi lokusiza abafundi ukuzijwayeza ukwakheka kwezinhlamvu zendlekefanele.

Izinsiza zokuthuthukisa ulimi

Lolu chungechunge luhlanganisa amakhono nezindikimba ezinhlanu ohlelweni lwalo, lusebenzisa lezi zingxenge eziyisithupha ezilandelela:

Incwadi Yokufunda: Incwadi yokufunda ihlanganisa yonke imisindo yebanga futhi inikeze imisebenzi nezivivinyo ezakha ulwazi magama, inikeze amathuba kokubili kokuzijwayeza ukubhala nomsebenzi. Incwadi yokufunda iyahlukaniseka, ilandelana ukuze ihlanganise amagama ahambisana nezinhlamvu kanye namafonimu ahambisanayo. Kunencwadi yokufunda eyodwa ebangeni ngalinye, ehlanganisa izintambo nezinto zethemu ngayinye.

Incwadi yamaqoqo emibhalo: Ibanga ngalinye linikezwa inqolobane yemibhalo equkethe izingama-20, izindaba, izinkondlo nemilolozelo engafundwa uthisha ekilasini. Lezi zinqolobane zisiza ukwakheka uthando lokufunda nokubhala. Okuqukethwe okuhlukene ngemasiko, kusiza bafundi ukuthi bahloniphe futhi baqonde ukwahlukahlukana. Inqolobane yemibhalo ingaba yingxenge yemisebenzi yokufunda ngokuhlanganyela kanye nemisebenzi yokulalela nokukhuluma. Kukhona inqolobane yemibhalo eyodwa ebangeni elinezindaba ezingama-20 ezizofundwa ethemini ngayinye. Izinqolobane zemibhalo ziklanyelwe ukuba afundwe kuzwakale othisha kubafundi.

Izincwadi zabafundi zamazinga: Izincwadi zokufunda zamazinga ziqukethe izindaba eziningi ezihleliwe ezikhula ngobuningi nobude lapho abafundi befunda ukufunda. Isethi ngayinye yezifundo

ezididiyelwe ihlukaniswe ngamaleveli ayisi-5. Izinga ngalinye linezincwadi eziyi-8 kanti sezizonke kunezincwadi ezingama-40 lapho kungasetshenziswa khona izincwadi eziyi-10 ngethemu ngayinge, okuhlinzeka abafundi ithuba lokufunda nokukhuluma imisindo ngesikhathi begifunda. Izincwadi zokufunda ezihleliwe zinamagama asetshenziswa njalo futhi atuswa uMnyango Wezemfundo. Umfundi ngamunye uqala ngezindaba ezilula ezifanele ukuqala konyaka. Amakhono abafundi okufunda ayathuthuka, ubude bendaba ngayinge. Izincwadi zokufunda ezifakwe amabanga zingasetshenziselwa kokubili ukufunda ngokuzimela nokufunda ngokuqondiswa ngamagama.

Izincwadi ezinkulu: Incwadi enkulu yokufunda ibhalwe ngombhalo omkhulu nezithombe ezikhangayo. Uthisha uzosebenzisa le ncwadi ngesikhathi semisebenzi yokufunda nokuhlanganyela.

Ukufunda ngokuhlanganyela kubaluleke kakhulu ekuthuthukisweni kwamakhono okufunda engane njengoba kuvumela iqembu lezingane ukuthi lithole izinzuzo eziningi eziyinjenge ngokufunda incwadi yezindaba. Kusetshenziswa incwadi enkulukazi noma incwadi enkulu emagangama amakhulu nomsebenzi wobuciko. Uthisha ufunda incwadi ngokuzwekalayo emabonke abantwana abafundelwayo babone futhi bajabulele okugayiwe kanye nezithombe ezithisha ufunda indaba izikhathi eziningana ezinsukwini ezimbalwa. Kuyo yonke le nqubo, izingane zibambe iqhaza elikhulu ekufundeni njengoba uthisha emakancane ukuze abantwana kanye nezibikezelo zalokho okuzokwenzeka ngokulandelayo. Izingane zingase zicelwe ukuba zifunde amanye amagama noma ingxenye yendaba njengoba zijwayelana namagama nemisho.

Ukufunda ngokuphindaphinda kufeza izinhloso eziningi; okokuqala, ukufunda kuwukuzijabulisa; okwesibili, okokwakha ukuqonda; okwesithathu, kuthuthukiswa ulimi; okwesine, umfundi angase agxile ekwazini amagama kanye namakhono okuhlonza amagama.

Kukhona uchungechunge lwezincwadi ezinkulu eziyi-8 ebangeni ngalinye ezivumela uthisha ukuthi akhombise futhi/noma afundise izingane ethile zombhalo ngokwengqikithi, okuhlanganisa: ukuhlela kokuphrinta kusukela phezulu kuye emaphakane nesobunxele kuye kwesokudla, kanye nokufundisa abafundi ukhumusha izimpawu zokubhala.

Izincwadi ezinkulu zibekwe ngokucacile ukuze kuboniswe izimpawu ezifana nezihloko, izihlokwana, imifanekiso, incazele amagama, amathebula, isakhiwo, njll. Lokhu kusiza abafundi ukuqinisa amakhono abo okufunda nokubhala, okuhlanganisa:

- Amakhono kubheka amagama njengokuhlanganisa nokuhlukanisa
- Amakhono kubheka amagama amagama amade ezilimini ezihlanganisayo, njengokuhlanganisa amagama
- Amakhono okufunda anjengokubona ngeso lengqondo, ukucabangela, ukuhlola nokwenza ukufundisa, njll.

Amagrafimu: Igrafimu iyinsiza yokufundisa ebonakalayo esetshenziswa esigabeni sesisekelo ukusiza abafundi baqonde ubudlelwano phakathi kwemisindo (amafonimu) kanye nezethulo zabo ezibhaliwe (amagrafimu). Kunezincwadi ezihlanganisa uchungechunge lwamafonimu eceleni kwamagrafu ahambisanayo ngendlela ekhangayo. Isibonelo, ingase ibonise uhlamvu “b” olunomsindo /b/ kanye nesithombe sento ethile eqala ngalowo msindo, njengokuthi “ilulwane.” Lokhu kusiza abafundi ukuthi benze ukuxhumana phakathi kolimi olukhulunywayo nolubhalwayo futhi kusize ekuthuthukisweni kokufunda nokubhala. Ifonimu kufanele ibonise ngokugqamile ekilasini ukuze kube lula

ukubhekisela kuyo kanye nokusebenzisana okuvamile. Kukhona namakhadi angama-25 ithemu ngayinge; anamakhadi ayi-100 ebangeni ngalinye ukusiza ngamafonimu.

Amaphosta: amaphosta ayinsiza ewusizo kothisha. Amaphosta ayisi-8 ebangeni ngalinye angasetshenziswa:

- njengokusetshenziswa kwekhono lokulalela nokukhuluma kokweseka ukufunda nokufundisa;
- ngezingxoxo zamaqembu ngezindikimba ezahlukahlukene;
- ukubona nokuxoxa ngabantu, izilwane kanye nezinto;
- ngengxoxo yeqembu ngezimo ezithile;
- ukubikezela ukuthi kuzokwenzekani ngokulandelayo.

Amashadi okubhala: Amashadi okubhala ngesandla angamathuluzi abonwayo osetshenziselwa ukusekela ukuthuthukiswa kwamakhono okubhala kubafundi. Anikeza ireferensi cacile, ehlelekile yokwenza izinhlamvu nezinombolo ezinosonhlamvukazi ezinhlanganisa ngendlela efanele. Kunezincwadi eziqukethe amashadi angabhalwanga ngesandla angama-4 ebangeni ngalinye.

Amafleshikhadi: Lolu chungechunge lunamafleshikhadi angasetshenziswa abe wusizo kothisha:

- Ukungenisa/ukwethula ulwazimagama olusha
- Ukukhombisa indlela yokuphimisa
- Ukwethula izingxoxo zamagama amasha
- Ukudlala imidlalo yememori ngesethi yamagama angaphezu kwelilodwa.

Ezinye izinsiza: I-DBE Rainbow Workbook yingamathuluzi ngempumelelo nazo zonke izingxenye ezingenhla ukuze kuthuthukiswe ukufunda. Uthisha angasebenzisa amabhuku okusebenzela e-Rainbow njengomsebenzi othuthukisa ukufunda ngemva kokufunda umfundi ukuze aqinise ulwazimagama nemiqondo esemqondweni. Ukumanganisa ezinye izingxenye nemisebenzi ye-Rainbow Workbook, othisha bangakha ulwazi olufundwa olubanzi noluhelayo oluhambisana nezitayela ezahlukene zokufunda kuthuthukiswe ngqonda okujulile kwamakhono olimi.

Izinhlabo zokufunda

- **Ukufunda ngokuzibonisa:** umfundi uzifundela yedwa incwadi azikhelele yona ekhoneni lokufunda elinezincwadi noma umphalo awunikwe nguthisha.
- **Ukufunda ngokubhili:** umfundi ufunda nokulekelelana noma bashintshane nozakwabo. Umfundi uzofunda umpho noma isigabana bese enika ithuba uzakwabo naye afunde, njll.
- **Ukufunda ngokuhlanganyela:** Abafundi bafunda beyikilasi belekelelwa nguthisha befunda imibhalo ngokukhulisiwe.
- **Ukufunda ngamaqembu alawulwayo:** Abafundi bafunda ngamaqembu lapho umfundi ngamunye kumele athole ithuba lokufundela ozakwabo, uthisha uzolongisa lapho kunesidingo.

Izindlela zokufundisa ukufunda

Ngayinge yezindlela ezahlukeni zokufundisa ukufunda igcizelela isimo esithile sohlelo lwenqubo yokufunda. Izindlela ezintathu ezisemqoka yilezi:

- Indlela yokucozulula izinhlamvu emagameni
- Indlela yokubuka nokusho
- Indlela yolimi lonke.

Zonke izindlela zinomgomo ofanayo: ukuthuthukisa abafundi abazimele abaqonda ukufunda ngokufunda futhi besebenzisa amasu anhlolobhlobo ukuqonda amagama angajwayelekile.

Indlela yokucozulula izinhlamvu emagameni (khipha amakhadi)

Indlela yokucozulula izinhlamvu emagameni kusho ukwazi ukuthi imisindo yezinhlamvu (amafonimu) imeleleka kanjani yizinhlamvu (grafimu), bese usebenzisa lolu lwazi lokufunda amagama nemisho ngokunembayo nangokushelelayo. Leli yikhono elibalulekile abafundi abafanele balifundiswe esigabeni sesisekelo ngoba leseka ukuthuthukiswa kolimi nokufunda. I-grafimu kufanele isetshenziswe njengegama elisekela ukufundisa abafundi indlela yokubuka amagama nemisindo.

Indlela yokubuka nokusho

Indlela yokubuka nokusho igcizelela ukuqashelwa amagama. Indlela ithola igama layo kulokho okwenziwa abafundi: bheka igama (elivamabhalwa ekhadini), lalela uthisha elifunda futhi elisho kuzwakale njengagama eliphelele.

Inombolo elinganiselwe yamagama ethulwa esikhathi. Abafundi bazijwayeza amagama baze bawabone futhi bawasho kalula. Uma amagama eseyingxenyi yamagama abafundi ababonayo, bazijwayeza ukuwafunda ngokufunda ybanga equkethe amagama asebefundiwe. Indlela yokubuka nokusho ivame ukusebenziswa njengengxenyi yohlelo lokufunda ukuze kwandiswe ulwazimagama lwabafundi ababona (amagama ajwayelekile abangawafunda kalula).

Indlela yolimi lonke

Indlela yolimi lonke igcizelela ukuqonda nokwenza incazelo yamagama abhaliwe. Indlela yokufundisa isebenzisa imibhalo edlulisa ulwazi kanye/noma exoxa indaba. Ngisho nezincwadi zokufunda nokufunda ezilula zisebenza njengemibhalo yangempela.

Abafundi ababona amasu okwenza incazelo ngamagama asekhazini. Lawa masu ahlanganisa ukubheka isithombe ukuze asize ukuqagela unolwazi mayelana negama elingajwayelekile nokusebenzisa umongo nesakhiwo somusho ukuhlola ukuthi ukuqagela kunengqondo. Amanye amasu ahlanganisa ukufunda ngemisindo efakiwe, ukuthuthukisa ulwazimagama lokubona ngokusebenzisa amafleshikhadi, nokufunda nokusebenzisa amagama afanayo ezimweni ezehlukene.

Ukubuzwa imibuzo yokuqondisisa kuhlola ukuthi abafundi bawuzwile yini umqondo walokho abakuzwile nabakufundile.

Thisha: Qikelela ukuthi ngesikhathi ufundisa ukufunda uyawakhuthaza amakhono abafundi okucozulula izinhlamvu emagameni (ukuze bakwazi ukufunda amagama abangawazi); ikhono lokufunda ngokuqondisisa (bafundise ukusebenzisa amagama asekele igama abangalazi ukubona umqondo wegama abangalazi); bakwazi ukuxoxa ngemizwa yabo emva kokufunda indaba.

Izinhlobo zemisebenzi yokufunda

Imisebenzi yokufunda ihlanganisa amasu amahlanu:

1. Ukuqwashisa ngemibhalo ebhalwe ngemvelo

Ukuqwashisa ngemibhalo ebhalwe ngemvelo khuthaza abafundi ukuthi baqonde imibhalo ebazungezile. Ifonimi namaphosta kufanele kuboniswe futhi abafundi kufanele khuthazwe ukuba bazi ngokugaya okuzungezile endaweni yabo yasekhaya njenge amaqis amaphosta namaphephabhuku.

2. Ukufunda ngokuhlanganyela

Ukufunda ngokuhlanganyela kufanele kube umsebenzi wekilasi ukusikelelwa nguthisha esebenzisa inqolobane yemibhalo nencwadi enkulu ecelelwa noma yiziphi ezinye izinto ezifanele eziphathwe uthisha njengezincwadi zokusebenza zakwa-DBE. Ngesikhathi sokufunda ngokuhlanganyela uthisha ufunda nobafundi umibhalo omkhulu ozobonwa yibo bonke abafundi njengencwadi enkulu, imibhalo ekhulisiswe, izinkondlo, izikhangisi, njll. Uthisha ubonisa abantwana indlela yokufunda incwadi enjengokugeleza, ngokunomqondo kanye nephimbo eliyilo. Uthisha uyaqinisekisa ukuthi ushintsha amaphimbo uma kukhuluma abalingisi abahlukene, ungalekelela ngokushintsha ebusweni ukukhombisa imizwa ehlukene. Qinisekisa ukuthi uyakhombisa indlela yokuphungulwa khona, kuyababazwa, kuyamiwa njll.

Babuze imibuzo yangaphambi kokufunda esezincwadini ezinkulu ukuze ukhuthaze abafundi ukuthi bazibandakanye nezindaba baqagele ukuthi indaba izokhuluma ngani noma uvukuze ulwazi abantwana bakho, abakhulume ngezithombe. Babuze nemibuzwana etholakala emakhosini ezincwadi enkulu ukuze baxoxe ngabacabanga ukuthi kuzolandela noma kuzokwenzeka noma bazibeke ezinyathelweni zomlingisi ukuthi bona bangenzenjani. Bakhuthaze ukuthi ukuphendule imibuzo yokuqondisisa mayelana nezindaba. Ukuphendula imibuzo yokuqondisisa kungasetshenziswa njengengxenye yokuhlola okungakahleleki. Ziningi izinzuzo zokufunda ngokuhlanganyela. Nazi ezibaluleke kakhulu:

- Abafundi bachaza ngolimi olusetshenziswa ezincwadini. Lokhu kubaluleke kakhulu ekufundeni imibhalo emihlelokweni lokwengeza.
- Ukufunda ngokuhlanganyela kuthuthukisa amakhono abafundi olimi lwabo nokwakha izichazamazwi.
- Ngokubafundela izindaba, abafundi bathuthukisa ulwazi lwabo lokuthi izincwadi nezindaba zisebenza kanjani. Isibonelo, bafunda ukuthi izincwadi zihlala zinesihloko, zihlale zifundwa ekhasini elingakwesokunxele kuqala, futhi ukusuka phezulu kuye phansi ekhasini ngalinye.
- Njengoba ufundela abafundi bakho, ubonisa indlela yokufunda kahle. Isibonelo, ubonisa indlela yokufunda ngezwi kanye nokuthi uma isikhashana nini.

Incwadi efanayo yokufunda ngokuhlanganyela noma ukwaziswa kufanele kusetshenziswe nabafundi ngezikhathi ezimbili ukuze bajwayele umbhalo.

Isigaba soku-1

- Kulesi sigaba kufundwa okokuqala. Thisha yethulela kubafundi bakho incwadi. Sebenzisa ulimi lwabo lwasekhaya, uma kunesidingo.
- Qala ngokwethula incwadi uyibambe uyiphenduphendule ukuze babone iphambili nengemuva lencwadi. Bakhombise imininingwaye yencwadi njengabashicileli, ukuthi igaywe kanye, inombolo yencwadi, ubakhombise ukuthi iphathwa kanjani incwadi, uwapheqa kanye, amakhasi njll. Kwenze lokhu njalo uma nizoqala isifundo sokufunda luze luqale lona lwabo.
- Xoxani ngesihloko nesithombe esisekhaveni nindawonye, bavumele baqapela nendaba ngokulekelelwa izihloko nezithombe.
- Fundela bafundi indaba. Humushela abafundi uma kunesidingo.
- Ngesikhathi ufunda nangemuva kokuyifunda indaba, buza imibuzo ukhuthaza abafundi ukuthi bazibandakanye nendaba futhi bayixhumanise nempilo yabo. Isibonelo: “UZinzi uya ezitolo nonina noyise. Uyaya ezitolo? Ubani ohamba nawe e sitolo? Ekuqaleni konyaka, kungase kudingeke ukuthi ubuze le mibuzo ngolimi lwasekhaya kubafundi futhi ubavumele ukuba baphendule nangolimi lwabo lwasekhaya abangawumele. Umela lokhu kodwa qhubeka ubakhuthaze ukuthi basebenzise ulimi olusemthethweni lokhu kuzosiza ukuthi bafunde ulimi olusetshenziswayo ukufunda kanye nolusemthethweni.

Isigaba sesi-2

- Phinda ufunde indaba usebenzisa ulimi lwesiZulu olusemthethweni kuphela.
- Njengoba wenza lokhu, hlola ukuqonda kwabafundi ngokubuza imibuzo elula. Isibonelo: “Ubecashe kuphi?”
- Thisha yenza abafundi bakho buqheke amagama athile asembhalweni, ikakhulukazi uma lawa kungamagama abangawumele.
- Lapho kungenzeka kuba khulu buza abafundi ukuthi bahlanganyele nawe ekufundeni izingxenye zendaba ngokuba amagama aphindaphindiwe awusizo kulokhu. Isibonelo, “Ngizokloloda futhi ngihafule futhi ngizoqhumisa indlu yakho” kowuthi “Izingulube Ezincane Ezintathu.”
- Usungalela abafundi imibuzo yangemuva kokufunda lapho uzohlola ukuqondisisa kwabo ngenxa yobafundile.
- Uma isikhathi sivuma, bayalele babhale ngabakufundile noma badwebe abakuzwile noma ababathathale ngendaba.

3. Ukufunda ngokuqondisisa kwamaqembu alawulwayo

Ukufunda ngokuqondisisa kwamaqembu alawulwayo kuwumsebenzi weqembu elincane lapho uthisha esebenza neqembu elincane elilalela ukufunda kwabo kuphimselwa. Ukufunda ngokuqondisiwe ngamaqembu kufanele kube sezingeni eliphansi kunento esetshenziselwa ukufunda ngokuhlanganyela. Abafundi bamabanga ahlukene bangasetshenziselwa lokhu, njengoba bethuthuka ngamagama nemisindo okufanele ifundiswe ithemu ngayinye. Qinisekisa ukuthi umfundi ngamunye uyolithola ithuba lokufunda noma uneyakhe incwadi azoyifunda.

Ukulungiselela impumelelo: Ukufunda okuqondisiwe kweqembu

- Hlukanisa abafundi ngamaqembu ekuqaleni kwethemu. (Bheka indlela yokuhlanganisa abafundi ngamaqembu okufunda ukuze uthole ulwazi olwengeziwe.)
- Hlalisa abafundi eqenjini elikuzungezile etafuleni noma phansi benze indilinga ecansini noma ekhushinini.
- Qinisekisa ukuthi umfundi ngamunye unomfundi wokufunda noma kunomfundi oqinisekisa phakathi kwabafundi ababili.
- Hlala esihlalweni esiphansi ukuze ube seduze nezinga labafundi.
- Ngenkathi kufunda umfundi oyedwa, yalela abanye bokhombe ngomunwe ngaphandle kuzakwabo efunda khona.
- Nikeza isikhathi sokuba abafundi babuze futhi baphendule imibuzo ngendlela.
- Ukufunda ngokuqondisiwa kwamaqembu kufanele kwenzeke nsuku zonke kuthi isifundo ngasinye sokufunda ngokuqondisiwa kweqembu kufanele sibe ngemizuzu e-15 ubude. Kufanele usebenze namaqembu amabili ngosuku, awahluke amaqembu ususile ngosuku ukuze ngungabi khona amaqembu asalayo.
- Amaqembu angafundi nawe angakwazi ukufunda ngababili noma ukuzimela, noma athumele imisebenzi yokufunda efana nokugcwalisa amaphepha okusebenzela e-**DBE Rainbow workbooks**. Uthisha angabheka kusenesikhathi futhi amagama ukuthi yimuphi umsebenzi azowusebenzisa ezincwadini zokusebenza e-DBE futhi awulungiselele ngaphambi kokuba kuqale ikilasi lakhe lokufunda okuqondisiwe kwamaqembu .

Thisha: uma wakha amaqembu qini, thisha ukuthi uqala ngokuhlola amazanga okufunda abafundi ukuze wakhe amaqembu azokusebenzisa isimo sabo sokufunda. Kukhona lezi zinhlobo zabafundi:

- **Umfundi ongakwazi ukufunda:** Amazanga okufunda aphantsi, ubhekana nobunzima bokubona umehluko amagama, ulwazi lwemisindo luphansi futhi usahluleka ukufunda ngendlela eyiyo okwazi ngobunzima ukuthola ummongo wombhalo. Usadinga ukuqala uthando lokufunda.
- **Umfundi oqinisekisa ukufunda:** Lo mfundi useyakwazi ukufunda izinhlamvu, kungenzeka abale amagama okungathikameza ukuthola ummongo wombhalo kodwa useyabona ngendlela. Seluyaqala uthando lokufunda.
- **Umfundi ozamayo ukufunda ngokuqondisisa:** Lo mfundi useyazama ukufunda ngendlela engahli ummongo wombhalo, akasafundeli ukukwazi ukuphimisa kodwa usekwazi nokwenza ummongo ngalokhu akufundayo.
- **Umfundi osekazi ukufunda:** Lo mfundi useyakwazi ukufunda ngendlela eyiyo, akwazi nokufunda amagama athe ukuba nzima. Ukufunda usekubona njengesenzo sokuthola ulwazi, sebeyakwazi ukufunda bengalekelelwa muntu. Useyaqala ukufunda ngokugeleza.
- **Umfundi ofunda ngokugeleza:** Lo mfundi umubona ngokuba nomdlandla wokufunda, usefunda ngokugeleza futhi uyakwazi ukubona amaphutha noma okungawenzi umqondo embhalweni. Lo mfundi usefundela ukuthola ulwazi noma ufunda ngoba uyakuthanda akaphoqiwe, useyayazi nemithetho yokufunda (phumula, babaza, njll).

Uma wenza amaqembu qinisekisa ukuthi uyabaxuba ukuze bagququzelane bavukuze uthando lokufunda. Lokhu kuzokusiza ukuhlola intuthuko yabo uma kuphela ithemu. Ngabe lo obengakukhonzile useyafunda, luyakhula ulwazi lwemisindo? Obefunda nje, ngabe useyafunda uma ithuba livela? Siyakhula isivinini sokufunda, uyazisebenzisa izindlela zokuhlakaza amagama ukufunda amagama angawazi, njll. Ungasebenzisa nerubhriki elandelayo ukuhlola amazinga okufunda abafundi:

Abafunda ezingeni lokuqala	Abafunda ezingeni lesibili	Abafunda ezingeni esithathu	Abafunda ezingeni lesine	Abafunda ezingeni esilwanu
Lo mfundi wazi amagama ambalwa.	Lo mfundi wazi amagama ajwayelekile.	Lo mfundi uyawazi amagama ajwayelekile.	Lo mfundi uyawazi amagama ajwayelekile, uthi ukhumbula ngalaba amagama ake wawafunda.	Lo mfundi uyawazi amagama ajwayelekile.
Lo mfundi akawakhumbuli amagama nemisindo.	Lo mfundi uyawakhumbula amaye amagama nemisindo.	Lo mfundi uyaludinga usizo ukukhumbula amagama awafunda ekuqaleni.	Lo mfundi ufunda ngokugeleza.	Lo mfundi uyawakwazi ukufunda amagama ake wawafunda nalawa angakaze awabone.
	Lo mfundi usaludinga usizo kakhulu uma efunda.			Lo mfundi ukunda ngokuzethemba nangokugeleza.
				Lona ngumfundi ofunda kahle kunambo bonke ekilasini.

4. Ukufunda ngababili

Ukufunda ngababili: abafundi bangasebenza ndawonye besebenzisa izincwadi zokufunda. Mlelwe ezisetshenziswe esifundweni sabo sokufunda ngabaqondisi beqembu ngasebenzisa namafleshikhadi. Abafundi bafunda ngababili, oyedwa umfundi ufundela umqondisi wakhe, yena alalele bese beshintshana.

Ukulungiselela ukufunda ngababili ngempumelelo:

- Ekuqaleni kwethemu yoku-1, chazela abafundi ukuthi ufuna benzeni ngesikhathi sokufunda ngababili. Ungase udinge ukuphinda lokhu izikhathi ezimbalwa kuze kube yilapho abafundi sebekwazi khona okulindeleke kubo ngesikhathi sokufunda ngababili.
- Isikhathi esiningi beka abafundi ngababili kodwa kwesinye isikhathi bavumele abafundi ukuthi bazikhethele abalingani babo.

- Amapheya axubile asebenza kahle ngoba abafundi abanamandla bangasiza abafundi ababuthaka. Amapheya anekhono elifanayo aphinde asebenze kahle kubafundi abanamandla ngoba angakwazi ukusizana.
- Gwema ukubhanqa abafundi ababili ababuthaka ndawonye.
- Qiniseka ukuthi abafundi bahlezi eduze lapho befunda. Bangakwazi ukwabelana ngencwadi, noma bobabili babe nekhophi yencwadi efanayo.

5. Ukufunda ngokuzimela:

Ukufunda ngokuzimela: abafundi bangasebenzisa izincwadi zokufunda ezididiye kwe kanne nanoma yiziphi ezinye izinto zokufunda ukuze bazijabulele. Thisha bakhutho ukusebenzisa nezincwadi zokusebenzela zakwa-DBE.

Ukulungiselela ukufunda ngokuzimela ngempumelelo

- Yakha indawo ekhethekile ekilasini lakho lapho abafundi bengakufunda khona ukuzifundela izincwadi.
- Qiniseka ukuthi unazo izincwadi zezindaba kanye nezincwadi ezizokufunda ezikhanga abafundi abangakhetha kuzo.
- Beka izincwadi lapho abafundi bengafinyelela kuzo kalula emashalofini aphantsi noma emabhokisini.
- Khuthaza abafundi ukuthi bafunde uma sele abafundi umsebenzi wabo wasekilasini.

Ukuqaliswa kwemisebenzi yokuthuthukiswa kolimi kanye nemisindo esigabeni sesisekelo

1. Ukuthuthukiswa kolimi

Umsebenzi obandakanyayo emdlalweni othi 'I Spy/ngibona' muhle kakhulu ekuthuthukiseni amakhono olimi kubafundi abasigabeni sesisekelo. Ubasiza ukuthi bakhe ukuxhumana phakathi kwezinto ezibazungile ngokuthi bezijwayeza amakhono abalulekile njengokupela nokuchaza. Abafundi bayabandakanyeka ngokukhomba izinto, bazichaze, bagcine nokupela igama, okwenza lokhu kube yindlela ejoyinisiyo nesebenzisanayo yokuqinisa ukuthuthuka kolimi.

Ukuthuthukiswa kolimi esiGabeni esisiSekelo kuhlangukisa imisebenzi yokulalela, yokukhuluma, yokufunda nokubhala. Umdwebo olandelayo ukhombisa ukuthi zonke izingxenye ezahlukene zokufunda zikhombana kanjani futhi zingahlangukiswa ukuze kuhlinzekwe ubungoti ekuthuthukiseni kolimi.

2. Uphawu lohlahlami nokuqashelwa kophawu lwenombolo

Ukuhlola ikhono labafundi lokubona izinhlamvu, izinombolo nezinhlanganisela, qala ngemisebenzi elula efana nokuzingela izinhlamvu noma izinombolo. Isibonelo, abafundi bangathola izinhlamvu nezinhlanganisela ezifihliwe emdwebeni noma emsebenzini wobuciko. Amaphazili okusesha amagama afaka izithombe nawo ayasiza. Njengoba abafundi beba nokuzethemba ekwazini izinhlamvu nezinhlanganisela, khulisa ubuningi bomisebenzi efana nokubona nokulungisa amaphutha amakhulu noma amagama angapeliwe kahle. Umdlalo

'Izinhloli' ungabuye uguqulelwe kubafundi asebekhulile, lapho bepeleta khona igama eligcwele futhi banikeze incazelo noma balisebenzise emshweni.

3. Imisebenzana gemisindo

Imisebenzi gemisindo isiza abafundi baqonde ubudlelwano phakathi kwezinhlamvu nemisindo. Zijwayeze ukuphimisela amagama namagama usebenzisa izinsiza ezijabulisayo ezifana nokusikwa kwezinhlamvu, amafleshikhadi, namaphosta. Ukuzivocavocela imisindo kungenziwa ngabanye, ngababili, noma ngamaqembu, ukugcina abafundi bematazokungokufunda okuhlukahlukene nokudlalayo.

Umsebenzi wezinhlamvu

Kulo msebenzi kathisha noma oholwa ngontanga, abafundi basebenzisa ukusika izinhlamvu noma izimo ukuze bakhe imisindo ethile. Isibonelo, ukwakha umsindo othi "zwi," abafundi bahlanganisa izinhlamvu ezifana no 'z', 'w', no 'i'. Ngemva kokwenza umsindo, bangapela amagama afana nokuthi "ithuluzi," "ichibi," "umkhondo," nelithi "kuluhlaza" besebenzisa umsindo ofanayo. Ukwenza umdlalo wokuxuba imisindo, abafundi bangadweba into ababhale ngayo bahlanganise imisindo ngobuciko.

Umsebenzi wezinhlamvu ezixovekile

Kulo msebenzi kathisha noma oholwa ngontanga, abafundi basebenzisa izikelo ukusika izinhlamvu, onkamisa kanye nemisindo ukuze babhale amagama amasha. Isibonelo ukwakha igama elinemisindo eminingi efanayo elithi "icici". Ukuze abafundi bangwazi ukubhala leli gama kumele basike onkamisa abathathu abawu 'I' nezinhlamvu u 'c' abafundi ngemva kokwenza umsindo, bangapela amagama afana nokuthi "cula," "ciba," "cela" kanye abangawacabanga besebenzisa umsindo ofanayo. Ukwenza umdlalo wokuxuba imisindo, abafundi bangadweba into ababhale ngayo, bahlanganise imisindo nobuciko.

Ukwesekwa okwengeziwe

Ungathola inani yemibono yolimi, isipelingi, ukubhala, nemisebenzi yemisindo nge-inthanethi noma ngamanye amakhonontanga yothisha. Labo abasebenza ngamalungiselelo afanayo banganikeza iminininzi wane ukuthi yiziphi izinsiza ezisebenza kahle kakhulu kanye nanoma yiziphi izinselelo ezivocavocela abafundi abangabhekana nazo. Ukuqalisa le misebenzi ejabulisayo nexoxwayo kuzosiza ukwakha isisinqelo esiqinile sokufunda nokubhala kubafundi bakho.

Imisebenzi eyahlukahlukene

Imisebenzi yokuhlukanisa ihlinzeka ngokusekela abafundi abadinga usizo kanye nomsebenzi owengeziwe wabafundi abanekhono. Kukhona futhi imisebenzi ehlinzekwe ezincwadini zokusebenza ze-DBE, kokubili uLimi Lwasekhaya noLimi Lokuqala Lokwengeza yawo wonke amabanga.

Umsebenzi wokubuyekeza

Umsebenzi wokubuyekeza oLimini Lwasekhaya kanye noLimi Lokuqala Lokwengeza esigabeni sesisekelo kufanele uhlanganyele, futhi ulungiselelewe ukubhekana nezindawo ezithile lapho abafundi okungenzeka ukuthi badonsa kanzima khona. Nazi ezinye iziphakamiso:

- **Imisindo nokuqashelwa kwamagama:** Sebenzisa amafleshikhadi, amaphosta, inqolobane yemibhalo enamagama ajwayelekile nama ephethini lemisindo. Yakha udonga lwamagama ekilasini lapho abafundi bengeza khona amagama amasha abawafundayo.
- **Imidlalo yomsindo:** Dlala imidlalo egxile emisindweni yezinhlamvu, njengokuthi “Uma ufundisa umsindo 'bh' ungathi, 'ngibona into yami eyindilinga esiyikhahle’ ngo. Abafundi bazophendula ngokuthi ibhola. Phinda usho okunye okubonayo ukuchaze ngokuthi idle kokusho igama lakho ukuze baqagele igama elinomsindo 'bh'.
- **Ukwakhiwa kwamagama:** Bagqugquzele ukuthi benze izichazamazwe ezilwe ezinezithombe namalebula. Khuthaza abafundi ukuthi bazenzele okwabo ngokudweba noku'bula amagama amasha.
- **Ukuxoxa izindaba kanye nokuxoxa kabusha:** Sebenzisa izindaba ngokukulu ukufunda izindaba ngokuphimisela futhi utshale abafundi ukuthi bazixoxele ngamazwabo. Lokhu kusiza ekuqondeni nasekusetsheziweni kwamagama.
- **Ukufunda ngokuqondisa:** sebenzisa izikhathi zokufunda eziqondisiwe ukuze nisebenze ngamaqembu amancane futhi nifunde ndawonye abafundi abasezingeni. Buza imibuzo mayelana nombhalo ukuze uhlole ukuqonda futhi ukhumbane ngoxoxo.
- **Ukulandelana kwezindaba:** kubalulekile ukuhlala noma ngezithombe noma imisho evela endabeni futhi utshale abafundi ukuthi bayihlele ngendlela efanele ukuze kuqinise ukuqonda.
- **Amakhono okubhala:** Nikeza iziqalobemisho ukusiza abafundi baqale ukubhala imisho. Isibonelo, “Ngibona i-” noma “Imisho sentsomi engisithandayo yi-”
- **Bonisa bese usho:** Yiba nezikhathi ajwayelekile zokubonisa futhi utshale lapho abafundi bengaletha khona izinto futhi bazichaze. Lo mkhuba usiza ngokwakhiwa kwamagama nokwakhiwa kwemisho.
- **Ukulingisa:** Bandakanya abafundi emisebenzini yokulingisa lapho bengazijwayeza ukukhuluma nokulalela ezimfishane ezehlukane.
- **Imidlalo yo'upela:** sebenzisa imidlalo efana ne “Spelling Bee/upelomagama” ukuze wenze ukuzijwayeza ukupela kujabulise. Faka amagama abawafundayo njengamanje.
- **Ukuzijwayeza kwakhiwa kwezinhlamvu:** Nikeza amaphepha okuzilolonga ukuze abafundi bathuthukise ukubhala nokubhala izinhlamvu namagama alula ukuze bathuthukise amakhono abo okubhala ngasandla.
- **Imidlalo yokulalela:** Dlala imidlalo yokulalela lapho abafundi belandela iziqondiso zomlomo noma balalele izindaba ezimfishane bese bephendula imibuzo ngazo.
- **Imidlalo yomyalo:** Sebenzisa imidlalo ebandakanya ukulandela izikhombisindlela, njengokuthi “Ubaba utheni?” ukuthuthukisa amakhono okulalela nokuqonda.
- **Izikhathi zokufunda umuntu ngamunye:** hlela izikhathi zokufunda nomuntu ngamunye ukuze ugxile ezinselelweni ezithile umfundi angaba nazo.
- **Amakhasi okusebenzela:** Yakha amaphepha okusebenzela angawodwana aqondise izindawo lapho umfundi edinga ukuzijwayeza okwengeziwe.

- **Izinhlelo zokusebenza zokufundisa nemidlalo:** Sebenzisa izinhlelo zokusebenzazemfundo ezihambisana neminyaka yobudala nemidlalo egxile emakhonweni olimi lwesiZulu.

Umsebenzi wokwengeza

Umsebenzi wokwengeza Olimini Lwasekhaya kanye nasolimini Lokuqala Lokwengeza esigabeni sesisekelo kufanele uhlose ukujulisa ukuqonda kwabafundi nokwandisa amakhono abo leyo begcina khona imisebenzi iheha futhi ihambisana neminyaka yokukhula. Nansi eminye imiboniso yemisebenzi yokwengeza ongayenza thisha:

- **Imindeni yamagama:** Thisha ungayalela abafundi ukuthi babhale amagama amantsha abasemndenini yabo bangabhala ukuthi ingabe bahlala nobani emakhonweni abo.
- **Isipelingi:** Thisha yalela abafundi ukuthi ababhale amagama aphikisana ukusebenzisa amagama abawasebenzisile emindeni yabi Isibonelo: ugogo-umkhulu. Ubabhekele-ke ukuthi ubabheke isipelingi sabo ukuthi basibhale ngendlela.
- **Amajenali:** Khuthaza abafundi ukuthi bagcine ijenali yesichazane ngapho bebhala khona amagama amasha, izincazelo zawo, futhi bawasebenzise ngokwemihle.
- **Ukuhlaziya abalingiswa nesakhiwo:** Ngemva kokufunda izindaba, thisha nabafundi bonke xoxani ngabalingiswa abasemqoka nesakhiwo. Cela abafundi ukuthi bachaze abalingiswa, izimpawu zabo kanye nokulandelana kwezigama.
- **Izindaba ezinezithombe:** Hlanganisa ukuthi nokudweba ngokuthi abafundi bakhe izindaba ezinemifanekiso. Lokhu kubasiza ukuthi babhele imibhalo yabongaphambi kokubhala. Yalela abafundi ukuthi badwebe abalingiswa abo abakhona endabeni ukuze baveze amakhono abo.
- **Imisebenzi:** Funda izindaba ezinde noma izi-iphu ngokuzwakalayo. Buza imibuzo edinga izimpendulo ezineminingwane eminingana ukuze uhlole ukuqondisisa.
- **Ukwakhiwa kwezincwadi zasemkhawulo:** Cela abafundi ukuba basebenze ndawonye ukuze babhale futhi babonise incwadi yemigasi. Umfundi ngamunye anganikela ngemisho embalwa elula, futhi incwadi ingahlaleni ngokwabelwane ngayo nabanye.
- **Isofthiwe yezemfundo:** Sebenzisa izinhlelo zokusebenza zemfundo nesofthiwe enikezela ngemidlalo ethuthukisa ulimi lwemisebenzi. Izinhlelo zokusebenza eziningi zinikeza izindlela zokufunda eziqondene nawe ngokusekelwe ekuqhubekeleni phambili komfundi.

Kunobuhlelwano obukhulu phakathi koLimi nokufunda kanye nokukwazi ukufunda

nokukhuluma: Ulwazi olusezingeni eliphezulu lolimi kanye nokuthuthukiswa kokubhala nokukhuluma ulimi nokukhuluma ngezindlela ezimbili:

- Abafundi abanolwazi olusezingeni eliphezulu lolimi bakuthola kulula ukufunda umbhalo. Akusibona bonke abafundi abafika esikoleni benolwazi lolimi lwasekhaya olusezingeni eliphezulu ngakho-ke umfundi onolimi olusezingeni eliphezulu ufundiseka kalula.
- Ukufunda izincwadi kuyaluthuthukisa ulwazi lolimi. Ngokufunda izincwadi abafundi bathola ulwazi lwamagama oluningi bakwazi ukulusebenzisa ekubhaleni izinhlobonhlobo zemibhalo baphinde bathuthukise ulwazi lwabo. Lokhu kwenzeka ngendlela efanayo oLimi lwaseKhaya kanye noLimi lokuQala lokweNgeza.

Kubaluleke ngani lokhu kothisha bamabanga aphansi?

Uthisha kufanele aqaphele ukuthi abafundi noma bangalukhuluma ulimi lwasekhaya kodwa amazinga abo olwazi lolimi awalingani. Abanye abafundi bafika nolimi lwesigodi oluhlukile olimini olusetshenziswa esikoleni olungekho futhi ezincwadini zokufunda.

Kubalulekile ukuthi uthisha ofundisa ulimi lwasekhaya aqhubeke nokuthuthukisa izinga lolimi ngokubanika ulwazi lwamagama. Abafundi abanolwazi lwamagama oluningi bayakwazi ukusebenzisa ikhono lokuncozulula izinhlamvu emagameni nesifundo sokuqondisisa. Uthisha olwazi oluningi lwamagama bayakwazi ukufunda ngokuqonda imibhalo ebhaliwe.

Ukuhlola kubandakanya izindlela ezehlukene zokubona inqubekela phambili neqiniso kwabafundi.

EXTRACT PAGES

Izinhlobo zokuhlola zesigaba sesisekelo

Ukuhlola okuvamile kukusiza ukuthi ubone ukuthi abafundi babamba kahle kanjani imiqondo futhi basebenzisa amakhono abo. Esigabeni sesisekelo, ukuhlola okuqhubekayo kuvumela ukuqapha okuqhubekayo kwenqubekela phambili yomfundi kanye nempumelelo yokufundisa. Lokhu kukwenza ukwazi ukuhlola izindlela zakho zokufundisa nokukhula komfundi, kukusize wenze izinqumo zokufundisa zansuku zonke unolwazi.

Ukuhlola kokufunda ngokwemvelo kuhlangukanye nenqubo yakho yokufundisa, lapho abafundi ezijabulisayo, ezihehayo, nezindlela ezisekelayo zikhuthaza ukuhlanganyela ngokufundisa kwabafundi. Kuyasiza ukubona lapho abafundi bedinga khona ukwesekwa okwemvelo futhi kuqondisa imiyalelo yakho ukuze ihlangabezane nezidingo zabo. Imisebenzi emfanekiswe ngokungakahleleki phakathi nezifundo zansuku zonke.

Ukuhlola ngokufunda kubandakanya abafundi ukuzindla ngenqubekelayo yabo, kubakhuthaze ukuthi bazibophezele ekufundeni kwabo. Ngalokhu, abafundi ngenkuthalo ukuqonda kwabo, okuthuthukisa ukufunda okujulile nokuzazi.

Ukuhlolwa kokufunda kukuhlinzeka ngobufakazi bokuphila komfundi emaphuzwini athile ngesikhathi, kukusize ukubona inqubekelaphambili iyonke ngokwenza izinqumo ezinolwazi mayelana nokuqhubeka kwabo.

Ngesikhathi sokuhlola

Qaphela ngesikhathi semisebenzi

Bukisisa kahle ukuthi abantwana bayenza kahle yini imisebenzi kanye nokuphendula imibuzo.

Izithupha phakathi, izithupha phakathi

Abafundi mabakomphela izithupha phakathi ukuthi bayasizwa yini ukuba sokuqondisisa.

Amathikithi okuphuma

Abantwana bangadweba isifundo abasifundile ekungcineni kwesifundo.

Cabanga ukwabelana ngababili

Abafundi ababelane ngemibono ngababili.

Impendulo yomfundi

Abafundi abababone ngemibono befundo.

Ijenali yokufunda

Abafundi abagcine amajenali kahle ngakho konke lokho abakufundile.

Thuthukisa ilukuluku nokuvuleleka

Kubalulekile ukuthi abafundi basebenzisane ngamaqembu.

Imibuzo ngesikhathi sokufunda

Akube nemibuzo ekhuthaza ukucabanga kubafundi.

Ukuhlolwa kusetshenziswa njengesikhathi sokufunda.

Ukuhlola kusetshenziswa njengethuba lokufunda

Ngalesi sikhathi abafundi kumele bazihlole ngokwabo ukubona intuthuko yabo, lokhu kuyabagqogqezela ukuthi bazimisele futhi bazimisele ngokufunda. Bahola ukuqonda kwabo, okwenza babone lapho kume banyuse amasokisi khona.

Ishadi lokwazi ukwazi okumele ukwazi

Abafundi bagcwalisa abakwaziyo, abafuna ukukwazi, ngokuhamba kwesikhathi bagcwalisa abakufundile ukuhlanganisa ulwazi abanalo kanye nolusha.

Ukukhombisa imicabango abanayo ngesihloko esisha (concept mapping)

Abafundi bazakhela imidwebo esalwembu ekhombisa abakwaziyo, ngokuhamba kwesikhathi bayathasisela abakuzuzayo ngokuqhubeka kwesifundo.

Ukusungula amasu amasha

Gqugquzela ulwazi abanalo ngokukhuthaza abafundi ukuthi baxoxe ngemicabango abanayo ngesihloko esisha.

Amathikithi olwazi

Abafundi bayachaza ukuthi ulwazi olusha luhlangana kanjani nasehekwazi.

Ukuqedela indaba

Nika abafundi isiqalo sendaba udedele abafundi basiqhubeze ngolwazi abanalo.

Ngabe kushoda ini?

Nika abafundi amasu angaphelele noma izithombe ezingaphelele ukuze bona baqedele ngabakwaziyo.

Kuyaxoxiswa

Qala isifundo ngokuyalela abafundi ukuthi baxoxe ngesihloko esisha baphilola noma abakwaziyo abaphelele noma ukwazi abanalo ngaso.

Amajenali okufunda

Njalo ngeviki abafundi bayasho ukuthi ulwazi olusha luhlobana kanjani nolwazi asebenalo noma abakwaziyo.

Ukuhlolwa kokufundiwe

Izivivinyo zokuphela kwethemu

Ukuhlola okuhlelekile ukuthola ulwazi abalutholile abafundi.

Amakhwizi

Izivivinyo ezincane zokufunda.

Imibhalo

Imibhalo ehlola ukuqondisisa.

Ama-phrojekthi

Imibhalo yokuziqambela ekhombisa ulwazi.

Ukuhlola ukufunda

Abafundi bangahlola ngamunye ngokufunda ngokugeleza.

Ukulingisa

Abafundi bangakhombisa ulwazi lwabo ngesimo sempilo abaphila kuso.

Amaphothifoliyo

Qoqa wonke umsebenzi ubheka inqubekela phambili.

Okukhulunywayo

Abafundi bethula imisebenzi yabo ngomlomo.

Kubaluleke ngqonda ukuthi lezi zingxenyane azifundiswa ngokulandelana okuthile, kodwa zihlangane ekilasini futhi zisebenza kuzo zonke izigaba zokuthuthukiswa kokufunda.

Umqulu we-CAPS unikeza iziphakamiso zokuhlolwa kwemisebenzi yokufunda esigabeni esijisisekelo. Umsebenzi ngamunye kufanele wakhiwe izingxenyane eziningi eziphathelene nezimpawu ezihlukene zolimi.

Imisebenzi yokuhlola ingaqondaniswa nomsebenzi oqedwayo wesifundo sezibalo nezamakhono empilo. Ukuhlola okulandelayo kwemisebenzi yokufunda kuyadingeka kuleyo naleyo themu.

Ibanga	Isifundo	Ithemu yoku-1	Ithemu yesi-2	Ithemu yesi-3	Ithemu yesi-4	Isamba
1	Ulimi Lwasekhaya	1	1	1	1	4
2	Ulimi Lwasekhaya	1	1	1	1	4
3	Ulimi Lwasekhaya	1	1	1	1	4

Ibanga	Isifundo	Ithemu yoku-1	Ithemu yesi-2	Ithemu yesi-3	Ithemu yesi-4	Isamba
1	Ulimi Lokuqala Lokwengeza	1	1	1	1	4
2	Ulimi Lokuqala Lokwengeza	1	1	1	1	4
3	Ulimi Lokuqala Lokwengeza	1	1	1	1	4

Le rubhrikhi elandelayo engemuva kwencwadi ingasetshenziselwa ukufunda ekufundeni futhi iguqulelwe njengoba kudingeka kwezinye izimo zokufunda isigaba esigabeni esisisekelo.

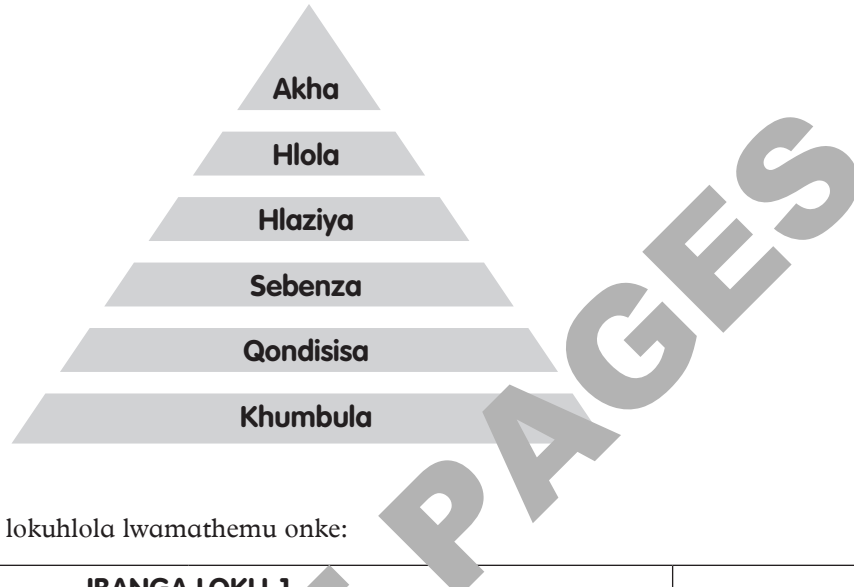
1 = Akuzuzwe lutho	2 = Kuzuzwe kancane	3 = Kuyelulisa	4 = Kuhle kakhulu
<ul style="list-style-type: none"> • Ukuthola kunzima ukubona amagama ayisisekelo. • Ubudlelwano obungebuhle bezimpawu zomsindo. • Uphindaphinda amagama. • Uthambile kakhulu, akanakho ukuzethemba. • Uveza incazelo ngezimpawu ezibonakalayo imifanekiso nomsindo. 	<ul style="list-style-type: none"> • Uyanensa ekuboneni amagama abalulekile. • Uhluleka ukuqonda nokuhlanganisa amagama athile. • Ufunda amagama angajwayele ngemifushane ngokushicilelayo. • Uyanensa amagama angajwayele. • Uyalalela; ufunda imibhalo emifushane elula nejwayelekile ngokushicilelayo. • Wenza incazelo ngezimpawu ezibonwayo kanye nombhalo olula ophrintiwe. • Angenza izibikezelo ngesihloko nekhava. 	<ul style="list-style-type: none"> • Wazi amagama abalulekile. • Usebenzisa ulwazi lwemisindo ukuze abone amagama angajwayelekile. • Uzama ukufunda ngokushicilelayo enamaphutha ambalwa. • Uzama ukufunda ngesivivini esimaphakathi kanti ukuphindaphinda amagama kumbalwa kakhulu futhi ayeqiwe (amagama angama-30-40 ngomzuzu). • Ukuqaphela ukushintshashintsha kwezwi; uzama ukuveza imizwa futhi usebenzisa ukuthinta okufanele. • Angakhumbula imiqondo esemqoka endabeni. • Ukwazi ukulandelanisa izehlakalo endabeni. 	<ul style="list-style-type: none"> • Uyakhwazi ukubona amagama asemishweni. • Usebenzisa amakhono emisindo ngempumelelo. • Angakhwazi ukubona amagama angajwayelekile ngale kwezinga lebanga. • Ufunda imibhalo ayijwayele nangayijwayele ngokushicilelayo. • Ufunda ngesilinganiso samagama angama-50-60 ngomzuzu. • Usebenzisa izimpawu zomzimba ngendlela efanele. Uvusa ukunaka komlaleli. • Uqonda kahle umbhalo. • Uxoxa ngesakhiwo, isizinda, abalingiswa. • Uveza imibono nemibono yakhe.

Amazinga okuthuthuka ngokomqondo esiZulwini ulimi lwaseKhaya noLimi Lokuqala lokwengeza

Ithebula elibalula imininingwane ngamazinga okuthuthuka kwengqondo nephesenti elifunakalayo kumazinga emisebenzi yonke yokuhlolwa.

Izinga lokuqala Ukukhumbula	<ul style="list-style-type: none"> • Ukuqonda nokuqondisa ... (isb ukubalula umlingisi obalulekile endabeni). • Ukukhomba/ ukukhombisa... (isb khomba ukuthi umlingisi ubehamba ngayiphi imoto). • Funda/caphuna amazwi endabeni... (isb ukucaphuna umusi oshoyo ukuthi umlingiswa uzizwa kanjani). • Ukuchaza... (isb ukuchaza umongo wendaba). • Khomba... (isb khomba ingxenye oyithandile endabeni). • Thola... (isb thola indawo lapho umlingiswa wayelibangise khona). • Yisho... (shono igama lenja eyaluma umlingiswa). 	Amazinga 1 no 2
Izinga lesibili Ukuqonda nokundisa	<ul style="list-style-type: none"> • Qhathanisa... (isb qhathanisa izinto emk... Yini mehluko?). • Bala... (Isb Bhala uhlu). • Hlukanisa... (Hlukanisa ngamagembu amahlukenene endabeni. Lawo amabi ngandawonye... Lawo amhle ngandawonye). • Finqa... (isb finqa indaba... Yisho emithathu). • Kuhluka kanjani... (uhluka kanjani umlingiswa oyiqhawe kunalowo oyisidlama?). 	
Izinga lesithathu Ukusebenzisa ulwazi	<ul style="list-style-type: none"> • Lingisa... (Lingisa ukuba umlingiswa ovelele. Yini owawungavenza...?). • Qagela... (isb ukuba kwakhamuka ibhubesi, wakuyokwenza kanjani?). • Kwakubababani... (isb indoda uma isibambene nebhubesi?). • Kwakuyokwenzakalani... (isb kwakuyokwenzakalani ukuba umkhulu akayibrikanga imoto phambi kwengane ekhasa ebaleni?). • Kwakuphumela... (isb kwaba yini imiphumela yezenzo zakhe?). 	Izinga 3 40%
Izinga lesine Ukuchaza	<ul style="list-style-type: none"> • Ukube... (isb ukube ugogo wakhe wayemtshelile?). • Ngokwakho... (isb umbono wakho. Ingabe wenza kahle ugogo?). • Ungabe uyavumelana... (isb uyavumelana nokuthi ugogo wenzakahle ngokufihla iqiniso?). • Wawungenza njani... (isb wawungenza njani wena ukuba wawungugogo?). • Kwakuyinto elungile... (isb kungaba wathatha isinqumo esiphusile yini ugogo?) 	Amazinga 4 no 5 20%
Izinga lesihlanu Ukuhlola nokuzenzela olwakho ulwazi	<ul style="list-style-type: none"> • Wacabangani... (Wacabangani ngenkathi kuqhamuka ibhubesi?). • Igama elifanele... (isb yiliphi igama elifanele nelichaza ibhubesi?). • Kukhona omaziyo ofanayo nalomlingiswa... (isb ubani omaziyo ongenza kanjengalo mlingiswa?). • Kungabe uyamthanda/ awumthandi... (isb kungani umthanda/ ungamthandi?). 	

Thisha khumbula ukuthi kubalulekile ukusebenzisa amazinga okuhlola njalo uma uhlola abafundi ngohlelo luka “*Blooms Taxonomy*”.



Thisha landela lolu hlelo lokuhlola lwamathemu onke:

IBANGA LOKU-1				
AMAKHONO	ITHEMU YOKU-1	ITHEMU YESI-2	ITHEMU YESI-3	ITHEMU YESI-4
Ukulalela nokukhuluma	1 Okukhulunywayo	1 Okukhulunywayo	1 Okukhulunywayo	1 Okukhulunywayo
Amafonikhi nopelomagama	1 Okukhulunywayo 1 upelomagama	1 Okukhulunywayo 1 upelomagama	1 Okukhulunywayo 1 upelomagama	1 Ukubhala
Ukufunda	2 Okukhulunywayo	1 Okukhulunywayo 1 Ukubhala	1 Okukhulunywayo 1 Ukubhala	1 Okukhulunywayo 1 Ukubhala
Indlela yokubhala	1 Ukubhala okuqoshiwe	1 Ukubhala okuqoshiwe	1 Ukubhala okuqoshiwe	1 Ukubhala okuqoshiwe
Ukubhala	1 Ukubhala	2 Ukubhala	2 Ukubhala	2 Ukubhala



Thina azincwadini zokufunda zamazinga yalela abafundi ukuthi bathole isithombe esicashile. Bheka ingaphakathi lekhava yencwadi lapho kunomyalelo othi mabathole isithombe esithile ezithombeni. Lokhu kwenzelwe ukubagqugquzela ukuthi babukisise, bacubungule imidwebo noma izithombe. Balekelele ngokubakhuthaza baze bazithole. Lo msebenzi ungabenzisa ngaphambi kokuba bafunde indaba.

Uhlelo Lokuhlola: Ibanga loku-1: Ithemu yoku-1-4

ITHEMU 1

Ulwazi lwamathebula alandelayo luthathelewe encwadini yakwa DBE yamabanga aphansi i-SBA
Exemplar enika umhlalanelo ngokuhlola.

Amakhono	Yimaphi amakhono ahlohlwayo	Uhlobo lokuhlola	Ithluzi lokuhlola	Amaphuzu	Umsebenzi awube usuwenziwe	Usuku umsebenzi oqedwe ngalo
Ukulalela nokukhuluma	<ul style="list-style-type: none"> Lalela uphefihini ngokuzwile. Chaza izinto ngobuhlobo bakho (ngakuma, imibala, ubungakol) usebenzisa ulimi obizanele. Zibandakanya ezingxoxo ezikilasi. Xoxa ngezehlalalo zempilo. 	Ngokubuka nokukhuluma	Uhlu lokuhlola irubhrikhi.	10	Ngesonto lesi-9	
Imisindo	<ul style="list-style-type: none"> Uyakwazi ukubona aphimise imisindo esekuqaleni kwamagama. Zibandakanya emisebenzini yemisindo yekilasi. Bona ukuhobana kwemisindo yonhlamvunye nonkamisa. 	Ngokubuka, ngokukhuluma	Uhlu lokuhlola irubhrikhi.	5	Uhlu lokuhlola irubhrikhi	
Ukufunda	<ul style="list-style-type: none"> Incwadi uyibamba ngendlela efanele, upheqa ngendlela amakhasi, uyakwazi ukunakekela incwadi. Ufuthukisa ulwazi ngesakhiwo sencwadi, ikhava, isihloko, ababhali njll. Uyaqagela elekelelwa izithombe. Uyakwazi ukufunda igama lakhe nelozakwabo, ufunda amalebuli nezihloko zezinto ekilasini. Uyalalela aphendule imibuzo ngakuzwile. Bona amagama: umfundi ngamunye akakwazi ukufunda okungenani amagama afundwa ngokubona angama-20-30. 	Ngokubuka nokukhuluma	Uhlu lokuhlola irubhrikhi	5	Ngesonto lesi-8 - 9	
Ukubhala kahle ngesandla	<ul style="list-style-type: none"> Kopisha adwebe amaphefihini ngendlela. Uyakwazi ukubamba asebenzise izinsizakubhala. 	Ngokubuka nokubhala	Uhlu lokuhlola irubhrikhi izincwadi zokusebenzela (zekilasi nezakwaDBE).	5	Ngesonto lesi-6	
Ukubhala	<ul style="list-style-type: none"> Bhala akopishe igama lakhe kanye namagama amafushane. 	Ngokubuka nokubhala	Uhlu lokuhlola irubhrikhi izincwadi zokusebenzela (zekilasi nezakwaDBE).		Ngesonto lesi-9	
Isamba				25		

Ithemu 4

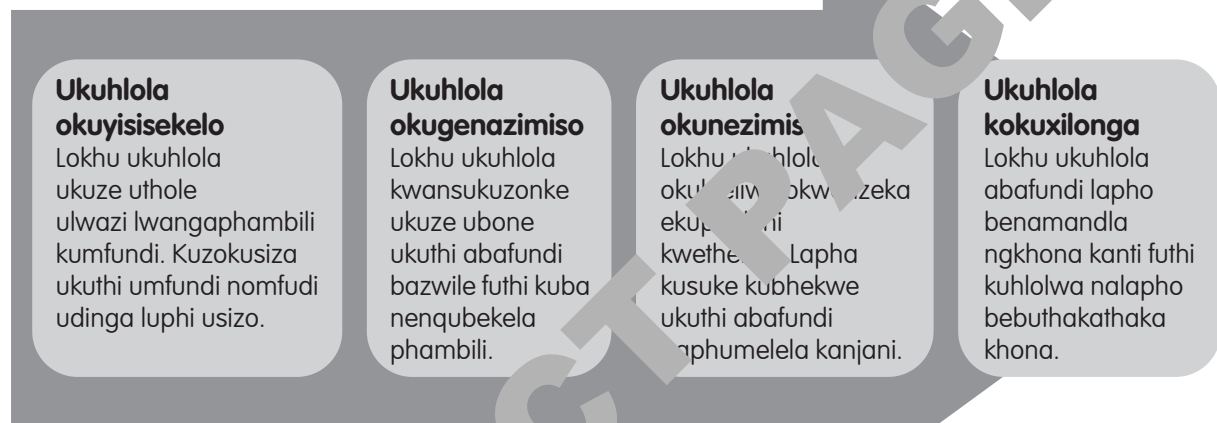
Amakhono	Yimaphi amakhono ahlohlwayo	Uhlobo lokuhlola	Ithuluzi lokuhlola	Amaphuzu	Umsebenzi awube usuwenziwe	Usuku umsebenzi oqedwe ngalo
Ukulalela nokukhuluma	<ul style="list-style-type: none"> Xoxa ngezetho zomculo zomphilo kanye nemizwa yabo. Uxoxa indaba ezisigalweni kanye nesiphetho esebenzisa ezifanele (imifanekisomqondo). Ulalela imiyalelo, nezimo nezelo ngendlela efanele. Zibandakanya ezingxoxweni zekilasi ezimizwa nemibono yakhe. Ulalela indaba aqhendule imibuzo emihlatheni. 	Ngokubuka, nangokukhuluma	Uhlu lokuhlola Irubhrikhi	10 (5+5)	Ngesonto lesi-7	
Imisindo	<ul style="list-style-type: none"> Bona zonke izinhlamvu ze-alfabhethi. Bona amagama ngokuhlubana kwawo. Wakha amagama amasha, Bona ukwakheka kwemisindo. Upela abhale amagama okungenani eyi-10 amafushane. 	Ngokubuka, nangokukhuluma	Amaphepha okusebenzela noma incwadi yokusebenzela yekilasi (noma yakwaDBE)	10 10	Ngesonto lesi-6 - 7 Ngesonto lesi-7	
Ukufunda	<ul style="list-style-type: none"> Hlola umfundi ngamunye afunde okungenani amagama angama-50-60. Buza imibuzo emi-2-3 mayelana nendaba abayifundile. Abafunde isiqeshana sendaba esinamagama okungenani angama-50-60. Babuze imibuzo ehlukene, bakhethe impendulo efanele kweziniwiwe, bagcwalisela ngagama ukuqedela, ukulandelanisa izehlakalo. Humusha ulwazi emibhalweni eyizithombe namathebula. 	Ngokukhuluma nangokubhala	Irubhrikhi Incwadi yokusebenzela zekilasi	10	Ngesonto lesi-6 - 7	
Ukubhala kahle ngesandla	<ul style="list-style-type: none"> Ubhala kahle zonke izinhlamvu ze-alfabhethi kanye ngendlela efanele, ashiye izikhala ezifanele abhale emiggeni. Ukopisha abhale kahle imisho okungenani emibili ngendlela efanele. 	Ngokubuka nangokubhala	Uhlu lokuhlola Irubhrikhi Incwadi yokusebenzela (zekilasi nezakwaDBE)		Ngesonto lesi-6	
Ukubhala	<ul style="list-style-type: none"> Bhala okungenani imisho emithatho ngesithombe noma isihloko sendaba ayaziyo. 	Ngokubhala	Irubhrikhi Incwadi yokusebenzela (zekilasi nezakwaDBE)	5	Ngesonto lesi-7	
Isamba				50		

Uhlelo lokuhlola oluhlelwehlwe amazinga aphansi (isiZulu)

Isitatimende Sohlelo Lwezifundo Sikazwelonke (i-NCS) sibeka ulwazi lokufunda, ukubhala, ukubala, kanye namakhono empilo njengezindawo ezintathu ezibalulekile zabafundi besigaba sesisekelo, okufanele zihlolwe. UMnyango Wezemfundo uhlinzeka ngoHlaka Lwemihlahlandlela Yokuhlola Yesigaba Esiyisisekelo ukuze usekele othisha ekuthuthukiseni nasekusebenziseni izinqubo ezihambisana ne-CAPS. Lolu chungechunge lusebenzisa ithiyori yokuhlukahluka ekwakhiweni kwalo kokuqokethwe, lusiza wena nabafundi bakho ukuba nihlangabezane nezimiso nezinjongo zokuhlola ezibekwe yi-NCS.

Izinhlolo zokuhlola zesigaba sesisekelo

Umnyango uqaphela izinhlobo ezi-4 zokuhlola zesigaba sesisekelo, ezibhalwe emquleni we-NC Assessment Guidelines: Ukuhlola



Ukuhlola ukufunda esigabeni sesisekelo

Sikwethulela uLily, umfundisi wamalesi-3 ohlakaniphile nothanda ukwazi othanda ukuza esikoleni. Nokho, naphezu kwemisebenzi yakhe, ubhekana nezinsalelo cishe kuzo zonke izifundo. Phakathi nezifundo zolimi, umfundisi uyame ukucela ukuya endlini yangasese, esaba ukuthi uthisha uzombiza ukuze afundele ngilasi ngokuzwakalayo. Ezibalweni, ulwa nezinkinga zamagama, ukuthola kunzima ukuzilandela. Kwi-Coding and Robotics, akakwazi ukuhambisana nemiyalelo ebhaliwe yemisebenzi, futhi kokuthi akakwazi Empilo, weqa ulwazi olubalulekile ngoba akakwazi ukufunda umbhalo wengqondo nokusebenza. Ngokushesha kubacacele othisha bakhe ukuthi inkinga yangempela ayikho ezifundweni nokwazo, kodwa ebunzimeni bukaLily bokufunda ngokugelezayo. Ngaphandle kwamaqinile aqinile okufunda, uzama kanzima ukuqonda imibuzo, ukulandela imiyalelo, nokuthatha ulwazi olusha kuzo zonke izifundo zakhe.

Uma ucabanga ngabafundi bakho, uzobona ukuthi uLily akayedwa. Abafundi abanengi abasebancane ekilasini lakho bangase bakuthwale kanzima ukufunda ezingeni elilindelekile ngeminyaka yabo. Laba bafundi, njengoLily, babhekana nobunzima ezifundweni ezihlukahlukene, hhayi ngoba bengengayo inshisekelo noma ikhono, kodwa ngenxa yokuthi abakawathuthukisi amakhono okufunda adingekayo ukuze bazibandakanye ngokugcwele nomsebenzi wabo. Le nselelo evamile igqamisa ukubaluleka kokubeka eqhulwini ukuthuthukiswa kokufunda esigabeni sesisekelo, ukuqinisekisa ukuthi wonke umfundi uthola ukwesekwa akudingayo ukuze aphumelele.

ITHULUZI LOKUHLOLA UKUFUNDA

Thisha ungasebenzisa leli thuluzi ukuhlola ikhono lengane lokufunda ngokukhululeka:

Ukuphinyiswa kwamagama:	Zingaki izinhlamvu umfundi angaziphimisa kahle ngomzuzu awodwa?
Ukufunda amagama Ukuhlola kokuqaphela imisindo	Mangaki amagama umfundi angakwazi ukuwafunda kahle ngomzuzu owodwa?
Ukufunda indatshana	Mangaki amagama umfundi angawafunda ngokukhululeka ngomzuzu owodwa? Bayakuqonda na abafundi abanye? Okubalulekile ukufunda ngokukhululeka hini ngesini.

- Thishakubalulekile ukubuza abafundi ngendatshana ukuhlola ukuqondisa noma bakufundile. Mingaki imibuzo umfundi angayiphendula angayiphendula kahle emva kokufunda indatshana?

Okubalulekile ngaleli thuluzi lokuhlola

Thisha nakhu ozokudinga

1. Ithuluzi lokuhlola
2. Iwashini noma umakhalekhukhwini
3. Incwajana yokuhlola umsebenzi womfundi ngamanye.

Ulihlola nini ikhono lokufunda lo mfundi?

Hlola amakhono okufunda omfundi ngokuthole isisekelo solwazi kanye nesokuqapha ngokuqhubeka:

1. Ekuqaleni (Qal) konyaka (Qal) ukwazi izinga abaqala ngalo ukufunda.
2. Phakathi (Phak) nonyaka (Phak) ukuthi izinga labo lokufunda liyathuthuka noma lime ndawonye okukanyibugcisa emuva.
3. Ekupheleni (Phak) ukuthi abafundi baphumelele yini emazingeni alindelekile okufunda ngokukhululeka nangokuqondisisa kulelo banga.
4. Uma umfundi eselizuzile ikhono lokufunda ngokukhululeka nokuqondisisa, asikho isidingo sokuba kubekho okuhlola.
5. Kuba umfundi engakwazi ukufunda izinhlamvu, asikho isidingo sokuhlola ukufunda ngokukhululeka. Qala ngokumulekelela akwazi ukuvunda izinhlamvu.

Kunani kuleli thuluzi lokuhlola?

1. Ishadi (Ishadi 1) elinezinhlamvu okufanele abafundi bazazi futhi bazifunde beziphimisa.
2. Ishadi (Ishadi 2) elinamagama okufanele abafundi bawafunde bewaphimisa.
3. Ishadi (Ishadi 3) elinendatshana okufanele abafundi bayifunde ngokukhululeka bephimisela.
4. Imibuzo okumele abafundi bayiphendule ukukhombisa ukuqondisisa indatshana abayifundile.

- Ishadi lokubheka inqubekela phambili ngokuqhubeka kwesikhathi. Usebenzisa lelishadi ukuqokelela amamaki omfundi ngamunye kwimisebenzi emine emayelana nokufunda ngokukhululeka.
- Uhla lokuqala kuzoba ngelokuphimsa izinhlamvu zamagama ezi-120; uhla lwesibili lokufundwa kwamagama a - 80; uhla lwesithathu ngelokufunda isiqephu esinamagama angu-56 (Ishadi 3:1), 55 (Ishadi 3:2), 70 (Ishadi 3:3), nohla lwesine okungelemibuzo emihlanu yokuqondisisa.

Ukuhlola ikhono lokusho imisindo yezinhlamvu ngesiZulu: Khombisa umfundi ishadi lemisindo yezinhlamvu (Ishadi1). Yithi kumfundi: “Nali ikhasi elinemisindo yezinhlamvu zamagama. Ngifuna uphimsa zonke izinhlamvu ozaziyo. Ngifuna uqale lapha. **(Khomba amagama asemaphuzulu kwesobunxele kuya kwesokudla.** Fundela umfundi umsindo wamagama onikelelile wona) Uma ngithi ‘Qala-ke’, uzophimsa izinhlamvu ngokuzazi kwakho. Uma ungawazi umsindo wohlamvu, ngizokusiza. Beka umunwe wakho ohlamvini lokuqala. Uzwe kahle? Usuluni? Qaleni?”

Beka isikhathi umfundi aqala ngaso uma uthi “Qala-ke.”

- Encwajaneni yomfundi dweba umugqa ovundla phezu kohlamvu umfundi oluphimsanga ngendlela, isibonelo: a.
- Uma umfundi ezilungisa ngaphandle kosizo lwakho, mukela leyo mpendulo njengokuyiyona.
- Ngemuva komzuzu mtshela ukuthi “mana.” Faka uphawu (✓) ngemva kohlamvu lokugcina oluphinyiswe ngumfundi.
- Bala bese uphinda urekhoda izinhlamvu umfundi aziphimsa kahle.
- Uma umfundi ephimsa kahle zonke izinhlamvu esikhathini esingaphansi komzuzu, rekhoda inani lezinhlamvu sezisonke, njengokuthi 40 eshadini lokubheka.

Isibonelo esikhombisa imisindo efundiwe

Isibonelo: b s

V	I	h		s	y	w	L	N	I
K	T	D	K	T	q	d	z	h	w
h	w			U	r	j	G	X	u
g	R	B	Q	l	f	l	Z	s	r

Dweba umugqa phezu kwemisindo h, z & k

Kulokhu umfundi ufunde wafika kumsindo “T”, olandelwa abakaki “l” abafakwe uthisha. Uthisha uzobala afike lapho umfundi egcine khona ukufunda. Ngamanye amazwi umfundi ufunde imisindo eyi - 16. Wenze amaphetha amathathu noma uhlulekile ukufunda imisindo emithathu, uthisha udweba umugqa phezu kwemisindo h, z, k. Ngakho ke umfundi ufunde kahle imisindo eyi - 13. Uthisha uzobhala amagama ayi - 13. Uthisha ubhala lokuhlola lomsebenzi wokufunda imisindo. Uma umfundi efunde kahle yonke imisindo ngesikhathi esingaphansi komzuzu owodwa, uthisha ufaka uphawu (✓) eshadini lokuhlola imisindo, lokho okusho ukuthi imisindo ihlolwe yonke. Asikho ke isidingo sokuqhubeka nalokuhlola.

Ukuhlola ikhono lokubiza amagama kahle

Khombisa umfundi ishadi lamagama (Ishadi 2). Wothi kumfundi “Buka la magama.” (Khomba amagama anikwe njengezibonelo. Funda amagama anikwe njengezibonelo Nanka amanye amagama. Ngifuna uqale lapha (Khomba igama lokuqala eshadini 2) bese uqhubeka njalo uye kwesokudla (mkhombise ekhasini). Uma ngithi ‘Qala-ke’, funda amagama ongawafunda. Funda ukhomba igama ngenkathi ulifunda. Uma ungalazi igama, ngizokusiza. Beka umunwe walo egameni lokuqala. Uzwe kahle? Usulungile? Qalake.”

Beka isikhathi umfundi aqala ngaso uma uthi “Qala-ke.”

- Encwajani yomfundi dweba umugqa ovundla egameni umfundi angalifundi ngendlela, isib: dangala
- Uma umfundi ezilungisa ngaphandle kosizo lwakho, mukela leyomperalelo ngokuyiyona.
- Ngemuva komzuzu mtshela ukuthi “Yima.” Faka uphawu (j) ngemuva khlawvu lokugcina oluphingiswe ngumfundi.
- Bala bese uphinda urekhoda amagama umfundi awafunde kahle.
- Uma umfundi efunde kahle wonke amagama esikhathini ngaphansi komzuzu, rekhoda inani lamagama esewonke, njengokuthi 40 eshadini

Ishadi Lamagama

Isibonelo seshadi lamagama Isibonelo: usisi icinane

umama	qoba	impulane	isigqoko	ingxabano	iwolintshi
ikati	ivele	isihlaka	ibhentshi	incwadi	amadolo
ubaba	sika	igabha	ummese	ingqathu	isicathulo
vela	izolo	imigqo	insizwa	inhlwathi	umgqomo
ixoxo	ukudla	uthisha	intshebe	igatsha	isikhwama

Umfundi ufunda umzuzu owodwa. Kulokhu umfundi ukwazile ukufunda afike emagameni athile abonwa nguthisha noma abantwana uphawu la ezogcina khona ukufunda. Ngamanye amazwi umfundi ufunde amagama ayi - 8. Umfundi wenze amaphutha amabili noma uhlulekile ukufunda amagama amabili uthisha wadweba umugqa phezu kwamagama: lala, ugogo, ngakho-ke umfundi ufunde kahle amagama ayi - 16. Umfundi aqala i - 16 eshadini lokuhlola lomsebenzi wokufunda amagama. Uma umfundi efunde kahle onke amagama ngesikhathi esingaphansi komzuzu owodwa, uthisha ufaka uphawu (✓) eshadini lokuhlola amagama, okusho ukuthi ahlolwe onke amagama. Asikho ke isidingo sokuqhubeka nalokho kuhlola.

Ibhentshimakhi ongayisebenzisa ukuhlola ikhono lokufunda

Thisha sebenzisa indlela elandelayo engaba isikali sokubona ikhono lokufunda lomfundi.

Ibanga loku-1: Ngethemu yokuqala kulindeleke bafunde amagama okungenani angama-20-30, ithemu yesi-2 angama-30-40, ithemu yesi-3 angama-40-50, ithemu ye-4 angama-50-60. Ngokuphela konyaka umfundi kumele akwazi ukufunda izinhlamvu okungenani ezingama-40 ngendlela eyayo

ngomzuzu omunye. Uma esefikile kuleli zinga, usungaqala umfundise izindlela zokuhlalela/hlakaze amagama ukuze akwazi ukufunda amagama angawazi. Lokhu kuzokhuthaza ukufunda ngokugeleza.

Thisha hlola:

- **Ulwazi lwezinhlamvu kanye nemisindo**
- **Ulwazi longwaqa** njengonhlamvumbili nomnhlamvuntathu
- **Ukufunda ngokugeleza**
- **Ukufunda ngokugeleza ngokuqondisisa.**

Ukuhlola okusheshayo kwabafundi abanamakhono ahlukene

Njengoba abafundi beqhubekela phambili emaBangeni (R-3), kuvamisile ukuqhubeka izinhlobo ezibanzi ezechekene zamakhono nezindlela zokufunda ekilasini. Nalaba abafundi abaningi bethuthukisa amakhono abo ngamazanga ahlukene, abanye bangabona ukwimipawu zokufunda noma ukukhubazeka ngokomzimba okungase kube nomthelela ekubhekiseni phambili kwabo ezifundweni. Ukuhlonzwa kusenesikhathi kwalezi zinsalelo kubalulekile njengoba ukungenelela okufika ngesikhathi kunganikeza ukusekela abafundi abakudingayo ukuze baphumelele.

Amathebula 2, 3 kanye no-4 anohlu oluphelele lwazinga zokufunda, nokuphakazamiseka kwe-neuro developmental disorder, nokukhubazeka ngokomzimba okungathinta abafundi esimweni semfundo.

Ithebula 2: Izinkinga Zokufunda

Ukuphazamiseka	Ukuzenzelo
<i>i-Dyslexia</i>	Izinkinga yokufunda ethinta ukufunda, isipelingi, nokuqashelwa kwamagama.
<i>I-Dysgraphia</i>	Ukuphazamiseka okunomthelela ekubhaleni, okuhlanganisa ukubhala ngesandla, isipelingi, nokuhlela imicabango ephepheni.
<i>I-Dyscalculia</i>	Isifo sokufunda esithinta ukucabanga kwezibalo nezinombolo zokuqonda.
<i>I-Auditory Processing Disorder (APD)</i>	Ubunzima bokucubungula ulwazi lokuzwa, ikakhulukazi ezindaweni ezinomsindo.
<i>I-Visual Processing Disorder</i>	Isifo lapho ubuchopho bunobunzima bokuhumusha ulwazi olubukwayo, kube nomthelela ekufundeni nasekubhaleni.
<i>I-Nonverbal Learning Disorder (NVLD)</i>	Iphawula ngezinkinga ozofuna ukuhlala nayo ozokhuluma ngayo ngesisombululo sobuso noma ulimi lomzimba futhi injini yokuthumela nenselelo yezibalo kanye nesifundo sokunyakazisa umzimba.
<i>I-Specific Learning Disorder (SLD)</i>	Isigaba esibanzi esihlanganisa ukufunda (dyslexia), ukubhala (dysgraphia), nobunzima bezibalo (dyscalculia).

Ithebula lesi-3: I-Neurodevelopmental Disorders

Ukuphazamiseka	Incazelo
<i>i-Dyslexia</i>	Inkinga yokufunda ethinta ukufunda, isipelingi, nokuqashelwa kwamagama.
<i>I-Dysgraphia</i>	Ukuphazamiseka okunomthelela ekubhaleni, okuhlanganisa ukubhala ngesandla, isipelingi, nokuhlela imicabango enhepheni.
<i>I-Dyscalculia</i>	Isifo sokufunda esithinta ukucabanga kwezibalo nezibalo zokuqonda.
<i>I-Auditory Processing Disorder (APD)</i>	Ubunzima bokucubungula ulwazi lokuzwa, ikusombululwa ezindaweni ezinomsindo.
<i>I-Visual Processing Disorder</i>	Isifo lapho ubuchopho bunobunzima kuba bokuqinisa ulwazi olubukwayo, kube nomthelela ekufuneni ekubhaleni.
<i>I-Nonverbal Learning Disorder (NVLD)</i>	Iphawula ngezinkinga zokufunda ukuhlala ngokukhuluma ngazo ngesisombululo sobusobu ngokulimi lomzimba futhi injini yokuthumela nenselelo yezibalo ngokwesifundo sokunyakazisa umzimba.
<i>I-Specific Learning Disorder (SLD)</i>	Isigaba esibanzi esithinta ukufunda (dyslexia), ukubhala (dysgraphia), nobunzima kwezibalo (dyscalculia).

Ithebula lesi-4: Ukuphazamiseka ngokomzi

Ukuphazamiseka	Incazelo
<i>I-Cerebral Palsy</i>	Iqoqo leinkinga ezithinta ukunyakaza, ithoni yemisipha, nokuxhumana, nokuvakalisa okuholela ebunzimeni emakhonweni amahle emisipha, nokukhuluma.
<i>I-Muscular Dystrophy</i>	Isifo ezizo esidala ubuthakathaka obuqhubekayo bemisipha, okubamba nomthelela ekuhambeni nokusebenza komzimba ekilasini.
<i>I-Spina Bifida</i>	Imawu lokuzalwa lapho umgogodla ungakheki kahle, ngokuvamile okuholela ezinselelweni zokuhamba futhi kwezinye izimo, ubunzima bokuqonda.
<i>I-Epilepsy</i>	Isifo sezinzwa esibangela ukuquleka okuphindaphindiwe, okungaphazamisa ukugxilisa ingqondo nokufunda.
<i>I-Hearing impairment</i>	Ukungezwa kancane noma okuphelele kungaphazamisa ikhono lomfundi lokuzwa ulwazi olukhulunywayo ekilasini.
<i>I-Vision impairment</i>	Ubunzima bokubona, obungaphazamisa ukufunda, ukubhala, nokubamba iqhaza emisebenzini yokufunda esekelwe ezibonwayo.
<i>I-Mobility impairments</i>	Izimo ezithinta ukunyakaza, njengokulahlekelwa imilenze, ukulimala, noma izimo ezifana nesifo samathambo, ezingenza imisebenzi yomzimba noma imisebenzi ethile yasekilasini ibe inselelo.
<i>I-Chronic illness</i>	Izimo ezifana nesifuba somoya zingase ziholele ekuloveni njalo noma zidinge indawo yokuhlala ukuze kuqinisekise ukuthi abafundi babamba iqhaza ngokugcwele emisebenzini yasekilasini.

Imisebenzana engemuva kwalo mhlahlandlela kathisha zingamathuluzi okukusiza ukuthi hlola ubone izinkinga ezingase zibe khona kubafundi. Zinikeza izindlela ezisebenzayo zokuqapha ukusebenzelana kwasekilasini futhi zihlonza izimpawu ezingase zibonise isidingo sokuqhubeka nokuhlolwa kochwepheshe. **Lezi zindlela zokuhlola akuzona ezokuxilongwa futhi akufanele zisetshenziselwe ukulebula umfundi.** Bheka ngemuva kwalomhlahlandlela kaThisha imisebenzana yokuhlola izinkinga zokufunda zabafundi bakho. Yisebenzise njengomhlahlandlela wokuzibheka futhi ukhulume nganoma yikuphi ukukhathazeka ngokunakekela lapho uxoxa ngakho nabazali noma ababheki. Lo mhlahlandlela usekela ukwakha isimo esibandakanya wonke umuntu nesi-100 lapho wonke umfundi engaphumelela khona.

Irubhrikhi yokuphendula imibuzo

Thisha ungasebenzisa lamarubhrikhi alandelayo ukuhlola izimpendulo zabafundi ngesikhathi ubabuza imibuzo ngesikhathi sokufunda. Hlola izimpendulo zabafundi usebenzisa amaphuzo alandelayo.

	Kusasenesidingo sokusekwa 1-2 > amamaki	Kunentuthuko kufanelekile 3-4 > amamaki	Kufanelekile 5-6 > amamaki	Kuyisibonelo esihle nakwabanye 7-8 > amamaki
Ngabe inembile? Impendulo ihambelana nombuzo futhi ibonisa ukuqonda isihloko.				
Ngabe icacile? Kulula ukuqonda ukuthi ithini impendulo.				
Ngabe iphendulwe ngokugcwele/ ngokuphelele? Impendulo inika zombili izingxenye zombuzo.				
Ngabe ininzi? Impendulo ikahle – yalindele kahle (ihle) futhi kulula ukulandelela yikushoyo (iyalandeleka kalula).				
Ngabe isekelwe kahle? Impendulo inikeza ubufakazi ukusekela umqondo lapho okunesidingo khona.				

Sebenzisa amaphuzu alandelayo ukukala imizamo yabafundi uma bephendula imibuzo:

	Kunesidingo sokusekwa	Kunentuthuko	Kufezekile	Kuyisibonelo esihle
Inembile	Impendulo ayishayi emhlohleni futhi ibonisa ukungasiqondisi isihloko	Impendulo ayinembile kahle hle/ayishayi emhlohleni ngokugcwele nokho ibonisa ukuqonda isihloko kodwa ngokungalingene.	Impendulo inembile kakhudlwana futhi ibonisa ukuqonda isihloko kahle	Impendulo inembile ngokugcwele futhi ibonisa ukuqondisisa isihloko
Icacile	Impendulo ayiacacile, iyadida noma isebenzisa ulimi olungezwakali/ olungacacile	Impendulo icacilenyana kodwa ingaba ngconywa kunalokhu ukuze iqondiseke	Impendulo icacile futhi kulula ukuqondisisa isihloko	Impendulo icace kahle hle yathi bha, ayithemelezi, ibekeke kahle kabi
Iphelele	Impendulo ayiphelele noma ihlulekile ukugxila ezicini ezithile zombuzo	Impendulo iphendulwe ngokungaphelele kodwa ingaba ngconywa noma kubufakazi obanye kwazi kuzo	Impendulo iphelele futhi ibonisa zonke izingxenye zombuzo	Impendulo iphelele ngokulingene kahle impela futhi inobunzulu
Ihlelekile	Impendulo ihleleke kabi futhi kunzima ukulandela ekushoyeni	Impendulo ihlelekile nje ngatheni kodwa isinokwenziwe ibe ngconywa kunalokho eyikho manje	Impendulo ihleleke kahle futhi kulula ukulandela umqondo wayo	Impendulo ihleleke kahle kakhulu, inomqondo ocacile ogelezayo
Isekelwe kahle	Impendulo idinga imininingwane noma ubufakazi lokho ezama ukukusho	Impendulo inika imininingwane engaphelele, ebuthakathaka.	Impendulo inikeza imininingwane efanelekile kanye nobufakazi obuseka lokho okukholelwa ukuthi kuliqiniso	Impendulo inika imininingwane enonophele nefanelekile kanye nobufakazi ukuseka lokho okukholelwa ukuthi kuliqiniso

Ithemu Yoku-1: Isiqondiso sokufundisa

Izindikimba		
	Mina	Isondo loku-1 nelesi-2
	Abangani bami	Isondo lesi-3 nelesi-4
	Konke ngami	Isondo lesi-5 nelesi-6
	Isikole sami	Isondo lesi-7 nelesi-8
	Umndeni wami	Isondo lesi-9 nelesi-10

Amakhono	Amacebo okufundisa	Amasonto	Izinsizakusasa nokufundisa
Ukulalela nokukhuluma Izifundo ezi-4 i mizuzu eyi-15=60 imizuzu	Imisebenzi yansukuzonke/ yamasontonke <ul style="list-style-type: none"> Lalela ngaphandle kokuphazamisa Xoxa ngolwazi onalo, usho izindaba, uchaze isimo sezulu, nokunye okuyizihloko zezigameko ezithile njll. Yalela abafundi ukuthi bacule amaculo futhi awanyakazele 	1-10	Iqoqo lemibhalo lphosta
	Kabili ngesonto kuzogxilwa emisebenzini yokulalela nokukhuluma: <ul style="list-style-type: none"> Yalela abafundi ukuthi balalele imigalelo elula (ngokwenziwa e-... ..) bese wenza okufanele Abafundi ababhale izindaba imilolozelo, izindaba namaculo ngokuzijabulela bese izingxenye zendaba amaphakama imilolozelo. Buzoqondani mbuzo, njengemibuzo emalungu eminininingwane ngawe, njll. 	1-5	
	Tshela, yalela abafundi ukuthi baphinde banelanisa izithombe zendaba, ubuye ukhulume ngokulandelanisa imibono, <ul style="list-style-type: none"> Yalela abafundi ukuba baxoxe ngezithombe ezisemashadini, amashadi anezihloko, nasezincwadini, njll Bayalele ukuba baxoxe ngokushintshana, bakhulume baphinde bahloniphe amalungu eqembu okulo, Tshela abafundi ukuthi bachaze izinto ngokwemibala, ngobungako, ngesimo, ngenani usebenzisa ulimi olufanele 	6-10	Iqoqo lemibhalo lphosta

<p>Ukufunda nemisindo</p> <p>Imisindo</p> <p>Izifundo ezi-5 imizuzu eyi-15 nsukuzonke=75 imizuzu</p>	<ul style="list-style-type: none"> • Imisebenzi yemisindo imizuzu eyi-15 nsukuzonke • Qala imisebenzi yolwazi lwemisindo, fundisa imisindo emisha ka-1 noma ka-2 ngesonto, wakhe amagama usebenzisa imisindo efundiwe • kumele ukuba abafundi bayakwazi ukuyibona bayikhombe le misindo a,b,c,d,e,f,g,h,i,j,k,l,m,n,o,p,q,r,s,t,u,v,w,x,y,z. • Uthisha akaqale ngokubuyekeza le misindo engenhla ngokuyibona • nokuyikhomba. Uthisha akalekelele abafundi abangalenzanga ibanga R ukuthi babe sezingeni labanye abafundi. • Kule themu kulindeleleke ukuba abafundi bafunde yonke lemisindo enhlamvunye elandelayo ngokuhlelekele: onkamisa a, e, i, o, u nongwaqa b, l, n, d,m, isib. umama, ubaba, ilala, idada, inunu. Ungwaqa ngamunye kufanele ahambisi nonkamisa isib. m+a = ma 	<p>1-10</p>	<p>Incwadi Yokufunda</p> <p>Amafleshikhadi</p> <p>Amafrizikhadi</p>
<p>Ukufunda nemisindo</p> <p>Imisindo</p> <p>Izifundo ezi-5 imizuzu eyi-15 nsukuzonke=75 imizuzu</p>	<ul style="list-style-type: none"> • Akunakulandelana okufundisa imisindo ngethelele • Abafundi abakwazi ukufundisa imisindo efundiwe emizuzu ezi-5 • Umfundi wakhe amagama esebenzisa imisindo efundiwe • Lisebenzisa amagama eliyisibonelo sezinto ezivela kwemisindo efundiwe. • Kulandela abafundi amagama esebenzisa ulwazi lwemisindo efundiwe, • Abafundi abahlukanise amagama ngamalunga awakhile nangemisindo kanje: (u-ba-ba, u-b-a-b-a, njll), • Funda ukupela amagama okungenani ama-5 ngesonto • Yalela abafundi ukuba babhale amagama okungenani ama-5 ngesonto. 	<p>1-10</p>	<p>Incwadi Yokufunda</p> <p>Amafleshikhadi</p> <p>Amafrizikhadi</p>

<p>Ukufunda ngokuhlanganyela</p> <p>Imizuzu eyisi-5</p>	<ul style="list-style-type: none"> • Imisebenzi yokufunda yansukuzonke: • Ukufunda ngamaqembu nothisha, (kungaba amaqembu amabili ngosuku), nokufunda ngokuhlanganyela kungaba ka- 2 noma ka-3 ngesonto. Amakhono okufunda kokuqala (afundiswa ezifundweni zokuhlanganyela • nakwezamaqembu afunda nothisha) • Thisha, ncwadi ngokuyikho uphenye kahle amakhasi, • Sebenzisa izithombe ukuqagela ukuthi indaba imayelana nani. Isib. Ufunda incwadi yezithombe, • Mabahumushe izithombe ukuze wakhe indaba yakho ngazo: funda izithombe 	<p>1-10</p>	<p>Incwadi enkulu</p>
<p>Ukufunda ngokuhlanganyela</p> <p>Imizuzu eyisi-5</p>	<ul style="list-style-type: none"> • Bafundise ukuqoqa baphinde bafunde iziqubulo namanye amagama nemibhalo esemphakathini. • Bayalele ukuthi bakwazi ukubona amagama abo namagama abanye abafundi okungenani abayishumi, • Bona amalebula nezihlokwana ezisekilasini. • Xoxa ngempatho nokufundisa incwadi, • Abalalele futhi baxoxa izindaba neminye imibhalo efundwa ngokuhlanganyela. • Thuthukisa umonono wosisekelo wombhalo okubizwa: • Ukwazi kwincwadi – ikhava, isihloko, incwadi, ingaphambili kungenani layo. • Ukwazi lombhalo – igama, amagama afanayo, amagama ezinhlamvu, okukodwa okukodwa okuhambisanayo. • Ukulawuleka – ukuqala ukufunda phambili ukuya ukugcineni, ukufunda asuke kwesokunxele aye kwesokudla, asuke phezulu ehle eya ekugcineni kwekhasi • Fundisa abafundi izimpawu zokukhuluma – osonhlamvukazi, lzinhlamvu ezincane, ongqi, ukhefana, uphawu lokubuzwa • Bafunda beyikilasi nothisha imibhalo ekhulusiwe njengezinkondlo, izincwadi ezinkulu, nezindaba ezakhiwe esifundweni • sokubhala ngokuhlanganyela. 	<p>1-10</p>	<p>Incwadi enkulu</p>

<p>Ukubhala kahle ngesandla</p> <p>Izifundo ezi-4 imizuzu eyi-15=60 imizuzu</p>	<ul style="list-style-type: none"> • Ukubhala kahle ngesandla: Izifundo ezihleliwe kathathu ngesonto imizuzu eyi – 15 Abafundi babhala ngokuhlukanisa ukukupisha nokubhala iziqephu ezinde ezinhlobonhlobo ezibhalwayo ngendlela efanele nebukekayo ezisukela endabeni ebhaliwe • Yalela abafundi babhale ngokwehlukana osonhlamvukazi nezinhlamvu ezincane kahle nangokuzethemba • Bakhombise ukusebenzisa izikhala ezifanele phakathi kwezinhlamvu namagama • Ababhale imibhalo yabo yanele kahle emigqeni edwetshwe encwadini yabo yokubhalela engama- 17mm • Mabakopishe futhi babhale isigatshane esinemigqa emi-3-4 esendabeni ebhaliwe (indaba, inkondlo njll.) • Mabakopishe babhale izinhlobo ezehlukene zemibhalo (isimifushane esifana nesosuku lokuzalwa, imiyalezo njll.) • Yalela abafundi ukuthi badwebane amaphethini ukulungiselela ukubhala ngokuhlukanisa • Mabasebenzisa amaphethini okubhala ngokufanele (amaphethini omsizi, irabha, iruloh) 	<p>1-10</p>	<p>Ishadi lokubhala Iphepha lokusebenzela Incwadi yomfundi yokubhalela Amagama endikimba asodongeni</p> <p>Incwadi yokusebenzela yakwa-DBE</p>
<p>Ukubhala ngokuhlanguyela, ngamaqembu nangokuzimela</p> <p>Izifundo ezi-3 imizuzu eyi- 15=45 imizuzu</p>	<ul style="list-style-type: none"> • Ukubhala ngokuhlanguyela, ngamaqembu /nangokuzimela: Izifundo sekilasi lonke/amaqembu ezincane izikhathi ezimbili kuya kwezintathu ngesonto, imizuzu engama-20 • Fundisa abafundi ukwakha izinhlamvu ezincane ngokuyikho (onkamisa aba-2 nongwaqa okungenani abayisi-6, l,o,h,m,a,b,t,c) • Mabakopishe babhale amagama abo, amagama amafushane nemisho • esuselwa emalebuleni, nakumaphosta, ebhodini lokubhala, njll, • Qala ukugcizelela ukubhala ngokudweba, izinhlamvu, izinombolo, amagama kanye nemisho emifushane 	<p>1-10</p>	<p>Ishadi lokubhala Iphepha lokusebenzela Incwadi yomfundi yokubhalela Amagama endikimba asodongeni</p> <p>Incwadi yokusebenzela yakwa-DBE</p> <p>Ishadi lokubhala Iphepha lokusebenzela Incwadi yomfundi yokubhalela Amagama endikimba asodongeni</p> <p>Incwadi yokusebenzela yakwa-DBE</p>

	<ul style="list-style-type: none"> • Izifundo zokubhala zekilasi lonke/ zamaqembu amancane /ngokuzimela mazibe ka -3 ngesonto imizuzu • eyi -15 ukwakhela nokuxhumanisa ukufunda ngokuhlanganyela, ukuxoxa nolwazi abalufundile: • Fundisa abafundi ukudweba izithombe ukudlulisa umlayezo, isib. Ngolwazi abanalo • Abafundi mababhale izihlokwana emidwebeni nasezithombeni, • Ababhale amagama basebenzise imisindo abayifundile, • Mabakopishe umusho owodwa osuselwa ebhodini nasemashadini ngokuyikho, • Fundisa abafundi ukufaka imibono ekubhaleni indaba ngokuhlanganyela. Le ndaba ibhalwa nguthisha ibekwe ekhoneneni lemibhalo elisekilasini 	1-10	Incwadi yokusebenzela yakwa-DBE
Ukusebenzisa ulimi Izifundo eziyisi-5 imizuzu eyi- 15=75 imizuzu	<ul style="list-style-type: none"> • Yalela abafundi ukubhalala osonhlamvukazi emagameni nasezibongweni zabo. 		

Uhlelo lwesonto

Uhlelo lokufunda lulandela indlela efanayo masonto onke

- Lokhu kwenza ukuthi kube lula kuthisha nabafundi ukulandela
- Abafundi bangazilungiselela umsebenzi olandelayo uma sebelwazi uhlelo.

uMsombuluko		uLwesibili		uLwesithathu		uLwesine		uLwesihlanu	
Ukulalela nokukhuluma	15	Ukulalela nokukhuluma	15			Ukulalela nokukhuluma	15	Ukulalela nokukhuluma	15
Imisindo	15	Imisindo	15	Imisindo	15	Imisindo	15	Imisindo	15
Ukufunda ngokuhlanganyela	20	Ukufunda ngokuhlanganyela	20	Ukufunda ngokuhlanganyela	20	Ukufunda ngokuhlanganyela	20	Ukufunda ngokuhlanganyela	20
Ukufunda ngamaqembu	30	Ukufunda ngamaqembu	30	Ukufunda ngamaqembu	30	Ukufunda ngamaqembu	30	Ukufunda ngamaqembu	30
		Ukubhala kahle ngesandla	15	Ukubhala kahle ngesandla		Ukubhala kahle ngesandla	15	Ukubhala kahle ngesandla	15
		ukubhala	20	ukubhala	20	ukubhala	20		
Isamba		Amahora ayi-8 ngesonto							

Imisebenzi yansukuzonko

Siyabingelelana	<p>Uthetha ubabingelele abafundi</p> <p>Imisindo: Sawubona bafundi bebanga lokuqala.</p> <p>Imisindo: Sawubona thish'u..... (bazosho isibongo sikathisha).</p> <p>2. Yabela abafundi ukuba babingelele abaseduze kwabo: Sawubona (basho amagama abafundi)</p>
Umbuzo wosuku	<p>1. Yakha amaqembu ngokoMBUZO WOSUKU</p> <p>a. Uzodinga amaqembu amahlanu</p> <p>b. Iqembu ngalinye lizophendula umbuzo wosuku kanye ngesonto</p> <p>Umbuzo: Imuphi umbala owuthandayo ? Thola izinto ezimbili ekilasini eziwulowo mbala owuthandayo</p>
Amaculo /imilolozelo	<p>Amagama abantu awafani, Yethula iculo kubafundi. Khomba umfundi ngamunye athi</p> <p>"Igama lami ngingu.... Liqala ngohlamvu</p>

Ukuhlola okuyisisekelo Isonto loku-1

Imisebenzi yansukuzonke

Thisha, yalela abafundi ukuba babhale ukuhlola okuyisisekelo. Le misebenzana uzobabhalisa ukuze uvukuze ulwazi abanalo. Izobhalwa ngezinsuku ezintathu zokuqala evikini lokuvulwa kwezikole. Le misebenzana ungabenzisa izinsuku ezintathu esontweni.

Ulwesithathu lokuvulwa kwezikole

Thisha, yalela abafundi ukuba babuke lesi sithombe esilandelela. Esi sithombe besho okuthathu abakubonayo.



Izimpendu ezilindelekile

1. Umfanekiso
2. Iqela
3. Iinkcukacha

ULWESINE

Thisha, yalela abafundi ukuthi bafunde amagama alandelayo besizwa nguwe.

1. Umfana
2. Ibhola
3. Inja
4. Umama
5. Ubaba

ULWESIHLANU LOKUVULA KWEZIKOLE

Thisha yalela abafundi ukuthi bafunde imisho emnandayo belandela wena.

1. Umfana uyathanda ukudlala ibhola.
2. Mina ngingayo inja.
3. Usisi uyayisaba inja.
4. Ngiyathanda ukudlala ibhola.

Isonto loku-1: Mina

Amagama afundwa ngokubona	Amagama anemisindo yesonto	Amagama amasha
bami	ami	amu
bona	ela	emi
laba	ala	eba

Amakhono	Amacebo okufundisa	Izinsizakufundisa
<p>Ukulalela nokukhuluma</p> <p>Izifundo ezi-4 imizuzu eyi-15=60 imizuzu</p>	<p>Isifundo soku-1</p> <p>Umsebenzi wansukuzonke: Siyabingelelana</p> <p>Ukubuyekeza umsebenzi odlule</p> <ul style="list-style-type: none"> • Khombisa abafundi indaba abazoyilalela ubafundela. Noma baqagelie ukuthi bazolalela ini namuhla. • Bafundele isihloko se-... base beyaqagela ukuthi indaba ikhuluma ngani. • Khuluma ngokudwebo ephelezela indaba. • Imibuzo. Babuze imibuzo ephelezela indaba. <p>Isifundo sesi-2</p> <p>Siyabingelelana</p> <ul style="list-style-type: none"> • Bafundele okoku-1: Iqoqo lemibhalo "Mina nomndeni wami omusha" • Bakhombise indlela yokufunda ukuze bezwe lapho uthatha amakhefu, ubabaza njll. • Bafundele ngendlela ezobenza balangazelele ukulalela indaba noma umlozelo uyinyakazele abayilalelayo. 	<p>Iqoqo lemibhalo</p> <p>Umbhalo woku-1: Iqoqo loku-1</p> <p>Mina nomndeni wami omusha</p> <p>Iphondo lokufundisa: Siyabingelelana</p>

	<p>Isifundo sesi-3</p> <p>Siyabingelelana</p> <ul style="list-style-type: none"> Babuze imibuzwana ngabasakukhumbula ngendaba abayilalela ngesifundo esedlule. Phinda ubafundele okwesibili <p>Isifundo sesi-4</p> <p>Siyabingelelana</p> <ul style="list-style-type: none"> Babuze imibuzo yangemuva kokulalela <ol style="list-style-type: none"> Ubani igama lenja exoxa udaba lwayo? Babebangaki kubo kaBhobhi? Nibangaki ekhaya kini? Kungani bakhetha uBhobhi phakathi kwezinja eziningi? njll. 	
<p>Ukufunda nemisindo Imisindo</p> <p>Izifundo ezi-5 imizuzu eyi-15=75 imizuzu</p>	<p>Isifundo soku-1</p> <ul style="list-style-type: none"> Thula umsindo waleli u- a no e Bakhombise ukuthi uphimsa kanjani umsindo a no-e Yethulela abafundi lomlando "m" bawuphimise bawabonise izindebe zombili. Babawusebenzisa kanye nonkamandla. Abafundi abasho amagama abazaziyo nalo msindo. Isib. ami <p>Isifundo sesi-2:</p> <ul style="list-style-type: none"> Bakhombise izithombe ezinalo msindo. Nabo abathasisele ngabakwaziyo. Abakhombe amagama analo msindo esiqeshaneni sendaba noma emishweni. <p>Isifundo sesi-3</p> <ul style="list-style-type: none"> Abafundi mabakhe amagama anomsindo ofundwayo: ami= a+m+i, ala=a+l+a, abo=a+b+o eba=e+b+a emi=e+m+i Banike uhla lwamagama abazosusa kuwo imisindo bafake eyaleli onto ukwakha amagama amasha. isib, umi-ami uba-eba 	<p>Incwadi Yokufunda Umbhalo woku-1: Ikh. loku-1 Ekhaya</p> <p>Amafrikhadi Amafleshkhadi</p>

	<p>Isifundo sesi-4</p> <ul style="list-style-type: none"> Abafundi abahlukanise amagama ngezinhlamvu ami=a+m+i Nika abafundi amagama axovekile bona bawalungise ukuze amagama enze umqondo. Isib. Mai-ima,bao,lae,laa,eaq <p>Isifundo sesi- 5</p> <ul style="list-style-type: none"> Thisha, sebenzisa isibizelo/isipelingi ngomsindo abawufundile: a no-e 	
Ukufunda ngokuhlanganyela	<p>Isifundo soku- 1</p> <p>Ngaphambi kokufunda</p> <ul style="list-style-type: none"> Babuze imibuzo yangaphambi kokufunda. Bafundele isihloko sendaba Abaqagele ukuthi ikhuluma ngani indaba Xoxani ngezithobe, basho ukuthi kwenzekalani kuzona. Yini oyibonayo kulesi sithombe. Ucabanga ukuthi yini elandelayo? Qagela ukuthi ikhuluma ngani le ndaba Izimpendulo ezilandelayo ziziyehluka. <p>Isifundo sesi- 2</p> <ul style="list-style-type: none"> Ngesikhathi kokufunda: Bafundele okwesibini Bakhombise indlela kokufunda. Isib. ukufunda ngokucacile ngokucacile. Iseke ukuthi abafundi balalele. Isib. ngokuthi ukuzenze imibuzo nendaba noma ngani ngezithombe. <p>Isifundo sesi- 3</p> <ul style="list-style-type: none"> Qhubeka nendaba noma ubafundele okwesibili. Khuthaza abafundi ukuthi bafunde kanye nawe. Chaza amagama alukhuni. Ungagcizelela namagama anomsindo obufundwa kuleli sonto. <p>Isifundo sesi- 4</p> <ul style="list-style-type: none"> Xoxa nabafundi ngokwenzeka endabeni. Abalingiswa, isizinda nendikimba yendaba. <p>Isifundo sesi- 5</p> <ul style="list-style-type: none"> Buza abafundi imibuzo yangemuva kokufunda. 	<p>Incazelo E-1 Umbhalo woku-1: Ikh. Isib. 1 Kulike ngami</p> <p>Amafizikhadi Amafleshikhadi</p>

<p>Ukufunda ngamaqembu alawulwayo:</p> <p>Imizuzu eyisi-5</p>	<p>Thisha, hlukanisa abafundi ngamaqembu. Ngenkathi usuqala neqembu lokuqala, nika abafundi izincwajana zokufunda bafunde buthule ukuze bangaphazamisani.</p> <p>- Bafundele indaba yesi-2: Mina nginguLulu</p> <p>Isifundo soku-1 Iqembu loku-1 kuya kwelesi-2 Ngaphambi kokufunda: <ul style="list-style-type: none"> • Mabaqagele ukuthi indaba ikhuluma ngani, ngemidwebo. Xoxani ngolwazi abanalo. </p> <p>Isifundo sesi-2 <ul style="list-style-type: none"> • Babuze imibuzo yangaphambi kokufunda. • Qala ubafundele okokuqala. Funda kanjani ngabo. • Izimpendulo zizohluka ezangaphambi kokufunda. </p> <p>Isifundo sesi-3 Ngesikhathi sokufunda Abafundi bashintshisane balekelelaneni. <ul style="list-style-type: none"> • Thisha, bafundele kuzo zonke izindaba. • Xoxa ngezithombe. • Khuthaza ukuthi abafundi bafunde kanye nawe. • Babuze imibuzo mayelana nendaba ezokwenza ukuthi bacakangele bafunde izinto ngenye indlela. </p> <p>Isifundo sesi-4 Emva kokufunda <ul style="list-style-type: none"> • Babuze imibuzo ngemuva kokufunda. Thola ukuthi bayazwa kanjani ngendaba, njll. Babuze imibuzo ukuba bayifunde ngabodwana ngokushintshana. • Izimpendulo: 1. e..e..e 2. lami, oma, umi, ima, lami </p>	<p>Incwadi yokufunda Umbhalo woku-1: Ikh. loku-1 Ekhaya</p> <p>Incwadi yokufunda yangazinga Izinga loku-1 Mina nginguLulu</p>
<p>Ukufunda ngamaqembu ngokuzimela</p>	<p>Mabafunde buthule imibhalo ngabodwana. Abafunde nozakwabo ngokushintshana.</p>	<p>Incwadi yokufunda: Umbhalo woku-1 Ekhaya</p>

<p>Ukubhala kahle ngesandla</p> <p>Izifundo ezi-4 imizuzu eyi-51=60 imizuzu</p>	<p>Isifundo soku-1 Yalela abafundi ukuba babhale izinhlamvu ezincane ngendlela efanele.</p> <p>Abadwebe izithombe zabo.</p> <p>Isifundo sesi-2:</p> <ul style="list-style-type: none"> Abafake imibala emidwebeni yabo yangesifundo esidlule. <p>Isifundo sesi-3</p> <ul style="list-style-type: none"> Yalela abafundi ukuthi badwebe abangani babo emdwebeni wabo. <p>Isifundo sesi-4</p> <ul style="list-style-type: none"> Mabafake imibala emidwebeni yabo, bayihlobise. 	<p>Ishadi lokubhala Iphepha lokusebenzela Incwadi yomfundi yokubhalela Amagama endikimba asodongeni</p> <p>Incwadi yokusebenzela yaku-DBE</p>
<p>Ukubhala ngokuhlanganyela Ngamaqembu Nangokuzimela Izifundo ezi-3 imizuzu eyi-15=45 imizuzu</p>	<p>Isifundo soku-1</p> <ul style="list-style-type: none"> Yalela abafundi ukuba babhale amagama nesibongo sabo. Abakopishe amagama amahlanu anomsindo abawufundile kuleli sonto. <p>Isifundo sesi-2</p> <ul style="list-style-type: none"> Yalela abafundi ukuthi baqedele umsebenzi wokukopisha amagama. <p>Isifundo sesi-3</p> <ul style="list-style-type: none"> Yalela abafundi ukuthi babhale amagama abo ngokubhala kwesithombe. 	<p>Ishadi lokubhala Iphepha lokusebenzela Incwadi yomfundi yokubhalela Amagama endikimba asodongeni</p> <p>Incwadi yokusebenzela ye-DBE</p>
<p>Ukusetshenziswa kokubhala Imizuzu engama-3</p>	<ul style="list-style-type: none"> Yalela abafundi bafake amagama amahlanu ekuqaleni kwamagama abo nasezibongweni zabo. 	<p>Amafleshikhadi</p>
<p>Umbuzo wosonto wesonto</p>	<p>Yini oyithandayo ngawe?</p>	
<p>Amagama endikimba yaleli sonto</p>	<p>Isibonelo: ela,ami, eba,alo</p>	<p>Amafleshikhadi</p>
<p>Ukuhlola okungahleliwe</p>	<p>Ukuhlola ngokubuka Ukukhuluma Ukubhala</p>	

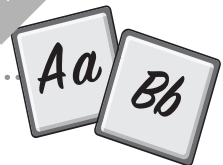
UMSEBENZI WOKU-1



Ukulalela nokukhuluma

- Haya umlolozelo ozowuyalelwa uthisha.
- Hayela uzakwenu umlolozelo owaziyo niwunyakazele.

UMSEBENZI WESI-2



Imisindo

- Hlukanisa amagama ezinhlamvu. Isib. umi - u/m/i
ami, eba, ala, abo, eqa

Izimpendulo ezilindelekile

- a/mi, e/ba, a/la, a/bo, e/qa

UMSEBENZI WESI-3



Ukufunda

- Bhala amagama ama-5 ngomsindo "a"
- Funda amagama owabhalile.

UMSEBENZI WESI-4



Ukubhala

- Zidwebe bese ubhala igama lakho ngezansi komdwebo.
- Faka imibala emdwebeni wakho, uwuhlobise.

Isonto lesi-2: Mina

Amagama afundwa ngokubona	Amagama anemisindo yesonto	Amagama amasha
bami	ami	amu
bona	ela	emi
laba	ala	eba

Amakhono	Amacebo okufundisa	Izinsinokulondis
<p>Ukulalela nokukhuluma</p> <p>Izifundo ezi-4 imizuzu eyi-15=60 imizuzu</p>	<p>Isifundo soku-1 Umsebenzi wansukuzonke: Siyabingelelana</p> <p>Ukubuyekeza umsebenzi odlule</p> <ul style="list-style-type: none"> • Khombisa abafundi indaba abazoyilalela ubafundile, noma baqagele ukuthi bazolalelani namuhla. • Bafundele isihloko sendaba bese beyaqhelela ukuthi indaba ikhuluma ngani. • Khuluma ngemidwebo ephelezela indaba. • Imibuzo: Babuze imibuzo ephelezela indaba yangaphambi kokufunda. <p>Isifundo sesi-2 Siyabingelelana Bafundele okoku-1: Iqoqo lemibhalo Mina nomndeni wami omusha</p> <ul style="list-style-type: none"> • Bakhombise imibhalo okufunda ukuze bezwe lapho uthathela imibhalo, ubabaza njll. • Bafundele ngemibhalo ezobenza balangazelele ukulalela indaba nomndeni lomlozelo uyinyakazele abayilalelayo. <p>Isifundo sesi-3 Siyabingelelana Babuze imibuzwana ngabasakukhumbula ngendaba abayilalela ngesifundo esedlule noma ngomlozelo.</p> <ul style="list-style-type: none"> • Phinda ubafundele okwesibili. <p>Isifundo sesi-4 Siyabingelelana</p> <ul style="list-style-type: none"> • Babuze imibuzo yangemuva kokulalela. • Qhubeka nemibuzo yangemuva kokulalela. Isib. • Wawungenzenjani uma inja yakini ikulandela ize ifike esikoleni? • Xoxela umngani wakho ukuthi uyinakekela kanjani inja yakho, njll. 	<p>Umibhalo soku-1: Ikh. Inku-1 Iqoqo lamaculo nomndeni wami omusha</p> <p>Iphosta yoku-1 Ukubingelelana</p> <p>Iqoqo lemibhalo Umbhalo wesi-2 Iqoqo lamaculo nemilozelo: Sidlani</p> <p>Iphosta yoku-1: Siyabingelelana</p>

<p>Ukufunda nemisindo Imisindo</p> <p>Izifundo ezi-5 imizuzu eyi-15=75 imizuzu.</p>	<p>Isifundo soku-1</p> <ul style="list-style-type: none"> • Thula umsindo waleli sonto. Unkamisa - o no u. • Bakhombise ukuthi uphimiswa kanjani umsindo u no o. • Abafundi mabasho amagama abawaziyo analo msindo. Isib. ufa, osa, njll. <p>Isifundo sesi-2</p> <ul style="list-style-type: none"> • Bakhombise izithombe ezinalo msindo. Nabo abathasisele ngabakwaziyo. • Abakhombe amagama analo msindo esiqeshaneni sendaba noma emishweni. <p>Isifundo sesi-3 Siyabingelelana</p> <ul style="list-style-type: none"> • Abafundi mabakhe amagama anomsindo ofundwayo. olu= o+l+u, ilo=u+l+o, alo=a+l+o, ola=o+l+a uli=u+l+i • Banike uhla lwamagama abazosusela ngomimisindo bafake eyaleli sonto ukwaziyo amagama amasha. isib,umi,omi ubu <p>Isifundo sesi-4</p> <ul style="list-style-type: none"> • Abafundi abahlukanise amagama ngezinhlamvu: uli= u+l+i • Nika abafundi amagama axovekile bona bawalungise ukwaziyo amagama enze umqondo. Isib. lao= l+o, lo= l+o, olu= o+l+u <p>Isifundo sesi-5</p> <ul style="list-style-type: none"> • Thini sebenzisa isibizelo/isipelengi ngomsindo ngokwaziyo. u-u no-o. 	<p>Incwadi Yokufunda: Umbhalo woku-1: Ikh. loku-1 Ekhaya</p> <p>Amafrikhadi Amafleshikhadi</p> <p>Incwadi yokufunda ngokwaziyo: LULU MASIZU</p>
<p>Ukufunda ngokuhlanganyela</p> <p>Izifundo ezi-3 imizuzu eyi-15=45 imizuzu</p>	<p>Isifundo soku-1 Ngaphambili kokufunda</p> <p>Ubuzo imibuzo yangaphambili kokufunda.</p> <ul style="list-style-type: none"> • Bafundele isihloko sendaba • Abaqagele ukuthi ikhuluma ngani indaba. • Xoxani ngezithombe; abasho ukuthi kwenzekalani kuzona. • Yini oyibonayo kulesi sithombe? • Ucabanga ukuthi yini elandelayo? • Qagela ukuthi ikhuluma ngani le ndaba • Izimpendulo ezilindelekile ziyehluka. <p>Isifundo sesi-2 Ngesikhathi sokufunda:</p> <ul style="list-style-type: none"> • Bafundele okokuqala. Bakhombise indlela yokufunda. Isib. ukufunda ngokugeleza nangokucacile. • Qinisekisa ukuthi abafundi balalele. Isib. ngokuthi ubuze imibuzo ngendaba 	<p>Incwadi Enkulu yoku-1: Konke ngami</p>

<p>Ukufunda ngababili ngokuzimela</p> <p>Izifundo ezi-3 imizuzu eyi-15=45 imizuzu</p>	<p>Mabafunde buthule imibhalo ngabodwana. Abafunde nozakwabo ngokushintshana.</p>	<p>Incwadi yokufunda Izinga loku-1: ULulu uyasiza</p>
<p>Ukubhala kahle ngesandla</p> <p>Izifundo ezi-4 imizuzu eyi-15=60 imizuzu</p>	<p>Isifundo soku-1</p> <ul style="list-style-type: none"> • Yalela abafundi babhale izinhlamvu ezincane ngendlela efanele. • Abadwebe izithombe zabo. <p>Isifundo sesi-2</p> <ul style="list-style-type: none"> • Abafake imibala emidwebeni yabo yangesifundo esidlule. <p>Isifundo sesi-3</p> <ul style="list-style-type: none"> • Yalela abafundi ukuthi badwebe okungaba babo emdwebeni wabo. <p>Isifundo sesi-4</p> <ul style="list-style-type: none"> • Mabafake imibala emidwebeni yabo, bayihlobise. 	<p>Ishadi lokubhala Iphepha lokusebenzela Incwadi yomfundi yokubhalela Amagama endikimba asodongeni</p> <p>Incwadi yokusebenzela yakwa-DBE</p>
<p>Ukubhala</p> <p>Izifundo ezi-3 imizuzu eyi-15=45 imizuzu</p>	<p>Isifundo soku-1</p> <ul style="list-style-type: none"> • Yalela abafundi babhale amagama nezibongo zabo. • Abakopisha amagama amahlanu anomsindo abafunda keleli sonto. <p>Isifundo sesi-2</p> <ul style="list-style-type: none"> • Yalela abafundi baqedelel umsebenzi wokukopisha amagama. <p>Isifundo sesi-3</p> <ul style="list-style-type: none"> • Yalela abafundi ukuthi babhale amagama abo ngaphansi kwesithombe. 	<p>Ishadi lokubhala Iphepha lokusebenzela Incwadi yomfundi yokubhalela Amagama endikimba asodongeni</p> <p>Incwadi yokusebenzela yakwa-DBE</p>
<p>kusebenzela kolimi imizuzu engama-30</p>	<ul style="list-style-type: none"> • Yalela abafundi bafake osonhlamvukazi ekuqaleni kwamagama abo nasesibongweni zabo. 	
<p>Umbuzo wosuku/wesonto</p>	<p>Yini oyithandayo ngawe?</p>	<p>Amafleshikhadi</p>

Amagama endikimba yaleli sonto	Isibonelo:eli,omi, ali	Amafleshikhadi
Ukuhlola okungahleliwe	Ukuhlola ngokubuka Ukukhuluma Ukubhala	

UMSEBENZI WOKU-1



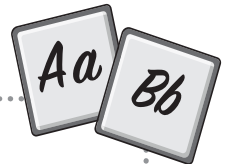
Ukulalela nokukhuluma

- Yalala abafundi ukuthi bahaye imliolozelo abayaziyo banye.

Izimpendulo ezilindelekile

- Thisha sebenzisa i-Rubhrikhi efanele.

UMSEBENZI WESI-2



Imisindo

- Batshe ukuthi uhlukanise amagama ngezinhlamvu. Isib. oma - o/m/a

ami, eba, o, eqa

Izimpendulo ezilindelekile

- a, e/ba, a/la, a/bo, e/qa

UMSEBENZI WESI-3



Ukufunda

- Ababhale amagama ama-5 ngomsindo “**a**”.
- Yalela abafundi ukuthi bafunde amagama abawabhalile

Izimpendulo zizohluka

- Thisha sebenzisa i-Rubhrikhi efanele.

UMSEBENZI WESI-4



Ukubhala

- Yalela abafundi ukuthi abazidwebe besibini amagama abo ngezansi.

EXTRACT PAGES

Isonto lesi-3: Abangani bami

Amagama afundwa ngokubona	Amagama anemisindo yesonto	Amagama amasha
yona	umo	imbongolo
lona	uma	aphula
	umi	

Amakhono	Amacebo okufundisa	Imibhalo okufundisa
<p>Ukulalela nokukhuluma</p> <p>Izifundo ezi-4 imizuzu eyi-15=60 imizuzu</p>	<p>Isifundo soku-1</p> <p>Umsebenzi wansukuzonke: Siyabingelelana</p> <p>Ukubuyekeza umsebenzi odlule Khombisa abafundi indaba abazoyilalela ubafundi ubafundi. Noma baqagele ukuthi bazolalela ini noma ubani.</p> <p>Bafundele isihloko sendaba bese beyaqagelela ukuthi indaba ikhuluma ngani.</p> <p>Khuluma ngemidwebo ephuzwe indaba.</p> <p>Imibuzo: Babuze imibuzo ephuzwe indaba yangaphambi kokufunda.</p> <p>Isifundo sesi-2</p> <p>Siyabingelelana Bafundele imibhalo: Iqoqo lemibhalo: Sidlani?</p> <p>Bakhombise indlela yokufunda ukuze bezwe lapho bafunda batha amakhefu, ubabaza njll.</p> <ul style="list-style-type: none"> Bafundele ngendlela ezobenza balangazelele ukulalela indaba noma umlolozelo abawulandelayo, uwunyakazele. <p>Isifundo sesi-3 Siyabingelelana</p> <ul style="list-style-type: none"> Babuze imibuzwana ngabasakukhumbula ngendaba abayilalela ngesifundo esedlule. Phinda ubafundele okwesibili. <p>Isifundo sesi-4 Siyabingelelana</p> <ul style="list-style-type: none"> Babuze imibuzo yangemuva kokulalela. 	<p>Iqoqo lemibhalo Umbhalo wesi-2: Ikh. lesi-5 Sidlani?</p> <p>Iphosta yoku-1: Ukubingelelana</p> <p>Iqoqo lemibhalo Umbhalo wesi-2: Ikh. lesi-5 Sidlani?</p>

<p>Ukufunda nemisindo Imisindo</p> <p>Izifundo ezi-5 imizuzu eyi-15=75 imizuzu</p>	<p>Isifundo soku-1 Buyekeza umsindo wangesifundo esidlule u –o no-u</p> <ul style="list-style-type: none"> • Thula umsindo waleli sonto u-i no-l • Bakhombise ukuthi uphimiswa kanjani umsindo. • Abafundi mabasho amagama abawaziyo analo msindo. Isib. uLili <p>Isifundo sesi-2</p> <ul style="list-style-type: none"> • Bakhombise izithombe ezinalo msindo. Nabo abathasisele ngabawaziyo. • Abakhombe amagama analo msindo esiqeshaneni sendaba noma emishweni. <p>Isifundo sesi-3</p> <ul style="list-style-type: none"> • Abafundi mabakhe amagama anomsindo ofundwa U-Li-li u+l+i+l+i Oli, leli, lelo, iloli, lilili • Banike uhla lwamagama abazosusa imisindo. Abafake eyaleli sonto ukwakha amagama amas... Neli, meli, jijiji, iloki <p>Isifundo sesi-4</p> <ul style="list-style-type: none"> • Abafundi abahlukanise amagama ngezimvamvu/ ngamalunga iloli = i/lo/li • Nika abafundi amagama axolile bona bawalungise ukuze amagama emqondweni. Isibo. ililo-iloli, bilu, lile <p>Isifundo sesi-5</p> <ul style="list-style-type: none"> • Thisha, benzise isibini ukupelangi ngomsindo abawufundwa. Isib. eli, lilili, iloli 	<p>Incwadi Yokufunda Umbhalo wesi-2: Ikh. lesi-3 Li li li halala!</p> <p>Amafrikhadi Amafleskhadi</p>
<p>Ukufunda ngokuhlanganyela</p> <p>Izifundo ezi-3 imizuzu eyi-15=45 imizuzu</p>	<p>Isifundo soku-1 Ngamagama kokufunda</p> <ul style="list-style-type: none"> • Bafundane imibuzo yangaphambi kokufunda. Abafundi isihloko sendaba. Abaqagele ukuthi ikhuluma ngani indaba. • Nani ngezithombe, basho ukuthi kwenzekani kuzona. - Yini oyibonayo kulesi sithombe? - Ucabanga ukuthi yini elandelayo? - Qagele ukuthi ikhuluma ngani le ndaba. <p>Isifundo sesi-2 Ngesikhathi sokufunda</p> <ul style="list-style-type: none"> • Bafundele okokuqala. Bakhombise indlela yokufunda. Isib. ukufunda ngokugeleza nangokucacile. • Qinisekisa ukuthi abafundi balalele. Isib. Ngokuthi ubuze imibuzo ngendaba, khulumani ngezithombe. <p>Isifundo sesi-3</p> <ul style="list-style-type: none"> • Qhubeka nendaba noma ubafundele okwesibili. • Khuthaza abafundi ukuthi bafunde kanye nawe. • Chaza amagama alukhuni. Ungagcizelela namagama enomsindo obufundwa kuleli sonto. 	<p>Incwadi enkulu yoku- yesi-1: Mina nabangani bami</p>

<p>Ukufunda ngokuhlanganyela</p> <p>Izifundo ezi-3 imizuzu eyi-15=45 imizuzu</p>	<p>Isifundo sesi-4</p> <ul style="list-style-type: none"> Xoxa nabafundi ngokwenzeka endabeni. Abalingiswa, isizinda nendikimba yendaba. <p>Isifundo sesi- 5 Ngemuva kokufunda</p> <ul style="list-style-type: none"> Buza abafundi imibuzo yangemuva kokufunda. 	<p>Incwadi enkulu yoku-yesi-1: Mina nabangani bami</p>
<p>Ukufunda ngamaqembu alawulwayo:</p> <p>Izifundo ezi-5 imizuzu eyi-15=75 imizuzu</p> <p>Iqembu loku-1 kuya kwelesi-2</p>	<ul style="list-style-type: none"> Thisha, hlukanisa abafundi ngamaqembu. Ngenkathi usuqala neqembu lokuqala, nika abafundi izincwajana zokufunda bafunde buthule ukuze bangaphazamisani. Bafundele indaba yesi-2: Li li li halala <p>Isifundo soku-1 Iqembu loku-1 kuya kwelesi-2 Ngaphambi kokufunda:</p> <ul style="list-style-type: none"> Mabaqagele ukuthi indaba ikhuluma ngani ngemidwebo. Xoxani ngolwazi abangabisi. Babuze imibuzo yangaphambi kokufunda. Qala ubafundele okokuqala. Funda kani ngababo. <p>Isifundo sesi-2</p> <ul style="list-style-type: none"> Phinda isifundo sokuqala ususela nza neqembu lesithathu nelesine <p>Isifundo sesi-3</p> <ul style="list-style-type: none"> Iqembu loku-1 kuya kwelesi-2 Babuze abafundi ukulayela ngendaba abayifunde ngesifundo esithathule. Bafundele okwasisibili bese ubabuza imibuzo yangemuva kokufunda. <p>Isifundo sesi-4</p> <ul style="list-style-type: none"> Phinda isifundo sesithathu neqembu lesithathu kuya kwelesine. <p>Isifundo sesi-5</p> <ul style="list-style-type: none"> Qinisekisa ukuthi wonke amaqembu alitholile ithuba. Uma isikhathi sikhona, benzise imisebenzana ezogcizelelisa okufundiwe. 	<p>Incwadi Yokufunda Umbhalo wesi-1: Ikh. lesi-3 Li li li halala!</p> <p>Incwadi Yokufunda yamazinga lizinga loku-1: Sonke asifani</p> <p>Incwadi Yokufunda Umbhalo wesi-2: Ikh. lesi-3 Lilili halala!</p> <p>Incwadi Yokufunda yamazinga lizinga loku-1: Sonke asifani</p>
<p>Ukufunda ngababili/ ngokuzimela</p> <p>Izifundo ezi-2 imizuzu eyi-15=30 imizuzu</p>	<p>Mabafunde buthule imibhalo ngabodwana. Abafunde nozakwabo ngokushintshana.</p>	<p>Incwadi Yokufunda Umbhalo wesi-2: Ikh. lesi-3 Li li li halala!</p> <p>Incwadi yokufunda yamazinga lizinga loku-1 Sonke asifani</p>

<p>Ukubhala kahle ngesandla</p> <p>Izifundo ezi-4 imizuzu eyi-15=60 imizuzu</p>	<p>Isifundo soku-1</p> <ul style="list-style-type: none"> • Yalela abafundi babhale izinhlamvu ezincane. • Abadwebe izinto abazithandayo. <p>Isifundo sesi-2</p> <ul style="list-style-type: none"> • Abafake imibala emidwebeni yabo yangesifundo esidlule. <p>Isifundo sesi-3</p> <ul style="list-style-type: none"> • Yalela abafundi ukuthi badwebe abangani babo emdwebeni wabo. <p>Isifundo sesi-4</p> <ul style="list-style-type: none"> • Mabafake imibala emidwebeni yabo, bayihlobise. 	<p>Ishadi lokubhala Iphepha lokusebenzela Incwadi yomfundi yokubhalela Amagama endikimba asodongeni</p> <p>Incwadi yokusebenzela kw-DBE</p>
<p>Ukubhala ngokuhlanganyela ngamaqembu nangokuzimela.</p> <p>Izifundo ezi-3 imizuzu eyi-15=45 imizuzu</p>	<p>Isifundo soku-1</p> <ul style="list-style-type: none"> • Yalela abafundi babhale amagama nezibongwele. • Abakopishe amagama amahlanu anomsindo abawufundile kuleli sonto. <p>Isifundo sesi-2</p> <ul style="list-style-type: none"> • Yalela abafundi baqedele umsebenzi wokukopisha amagama. <p>Isifundo sesi-3</p> <ul style="list-style-type: none"> • Yalela abafundi ukuthi babhale umusho ngabo. 	<p>Incwadi yomfundi yokubhalela</p> <p>Incwadi yokusebenzela yakwa-DBE</p>
<p>Ukusetshenziswa kolimi Imizuzu engama-30</p>	<p>Osonhlamvu amagama abantu nasezibongwele Lamula</p> <p>Limile</p>	
<p>Umbuzo wosuku/wesonto</p>	<p>Umbuzo: Uthi uhlobo lomculo owuthandayo?</p>	<p>Amafleshikhadi</p>
<p>Amagama endikimba kuleli sonto</p>	<p>Isibonelo: Limile iloli imali, lilili</p>	<p>Amafleshikhadi</p>
<p>Ukuhlola okungahleliwe</p>	<p>Ukuhlola ngokubuka Ukukhuluma Ukubhala</p>	

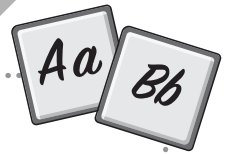
UMSEBENZI WOKU-1



Ukulalela nokukhuluma

- Bayalele bahage lo mlolozelo uwunyakazele: Ngivuka ekuseni.

UMSEBENZI WESI-2



Imisindo

- Hlukanisa amagama ngokwezinhlamvu. Isib. lila - lili
eli oli lilili leli

Izimpendulo ezilindelekile

- e/l/i, O/l/i, l/i/l/i/l/i, l/e/l/i

UMSEBENZI WESI-3



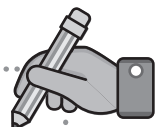
Ukufunda

- Bhala amagama ama-5 ngomsindo
t
- Phinda amagama owabhalile.

Izimpendulo zizohluka

- Isib. limi lilili iloli lilizela lila njll

UMSEBENZI WESI-4



Ukubhala

- Phinda ubhale kahle
lo musho:

Limile iloli

Isonto lesi-4: Abangani bami

Amagama afundwa ngokubona	Amagama anemisindo yesonto	Amagama amasha
yona	imali	imfiliji
leli	Limile	ijezi
	Lamula	ikhonsathi

Amakhono	Amacebo okufundisa	Amasiko okufundisa
<p>Ukulalela nokukhuluma</p> <p>Izifundo ezi-4 imizuzu eyi-15=60 imizuzu</p>	<p>Isifundo soku-1</p> <p>Umsebenzi wansukuzonke: Siyabingelelana</p> <p>Ukubuyekeza umsebenzi odlule Khombisa abafundi indaba abazoyilalela ubafundi ukuthi ungabaqagelisa ukuthi bazolalela ini noma ngani.</p> <p>Bafundele isihloko sendaba bese beyaqagelisa ukuthi indaba ikhuluma ngani.</p> <p>Khuluma ngemidwebo ephuzwe sendaba.</p> <p>Imibuzo: Babuze imibuzo ephuzwe indaba yangaphambi yokulalela.</p> <p>Isifundo sesi-2 Siyabingelelana</p> <ul style="list-style-type: none"> Bafundele okusobala-1: Iqoqo lemilolozelo namaculo Bafundele indlela yokufunda ukuze bezwe lapho uthathela amakhefu, ubabaza njll. <p>Bafundele ngendlela ezobenza balangazelele ukulalela indaba noma umlolozelo uyinyakazele abayilalelayo.</p> <p>Isifundo sesi-3 Siyabingelelana</p> <ul style="list-style-type: none"> Babuze imibuzwana ngabasakukhumbula ngendaba abayilalela ngesifundo esedlule. Phinda ubafundele okwesibili. <p>Isifundo sesi-4 Siyabingelelana</p> <ul style="list-style-type: none"> Babuze imibuzo yangemuva kokulalela. 	<p>Iqoqo lemibhalo: Iqoqo lemilolozelo namaculo: Umbhalo wesi-2: Ikh. lesi-5 Sidlani?</p> <p>Iphosta yoku-1 Ukubingelela</p> <p>Iqoqo lemibhalo Iqoqo lemilolozelo namaculo</p>

<p>Ukufunda nemisindo Imisindo</p> <p>Izifundo ezi-5 imizuzu eyi-15=75 imizuzu</p>	<p>Isifundo soku-1 Buyekeza umsindo wangesifundo esidlule u – i no-l</p> <ul style="list-style-type: none"> • Thula umsindo waleli sonto u-i no-l • Bakhombise ukuthi uphimiswa kanjani umsindo. • Abafundi mabasho amagama abawaziyo analo msindo. Isib. ubulili, ulamula, ibala, ulele, lolu <p>Isifundo sesi-2</p> <ul style="list-style-type: none"> • Bakhombise izithombe ezinalo msindo. Nabo abathasisele ngabawaziyo. • Abakhombe amagama analo msindo esiqeshaneni sendaba noma emishweni. <p>Isifundo sesi-3.</p> <ul style="list-style-type: none"> • Abafundi mabakhe amagama anomsindo ofundwa, U- li-li u+i+i+i+i Oli, leli, lelo, iloli, lilili • Banike uhla lwamagama abazosusa kuma imibuzo bafake eyaleli sonto ukwakha amagama nas. Neli, meli, jijiji, iloki <p>Isifundo sesi-4</p> <ul style="list-style-type: none"> • Abafundi abahlukanise amagama ngezinhlamvu/ ngamalunga iloli = i/lo/li • Nika abafundi amagama axovenile bona bawalungise ukuze amagama aze umfundo. Isibo. ililo-iloli, bilu, lile <p>Isifundo sesi-5</p> <ul style="list-style-type: none"> • Thisha, benze imibuzo/ isipelingi ngomsindo abafundile. Isib. ibala, leli, lolu, ulele, iloli 	<p>Incwadi Yokufunda Umbhalo wesi-2: Ikh. lesi-3 Li li li halala!</p> <p>Amafrikhadi Amafleshikhadi</p>
<p>Ukufunda ngokuhlanganyela</p>	<p>Isifundo soku-1 Ngaphambili kokufunda</p> <p>Babuze imibuzo yangaphambili kokufunda.</p> <ul style="list-style-type: none"> • Abafundele isihloko sendaba. • Abaqagele ukuthi ikhuluma ngani indaba. Xoxani ngezithombe, abasho ukuthi kwenzekani kuzona. <p>- Yini oyibonayo kulesi sithombe? - Ucabanga ukuthi yini elandelayo? - Qagela ukuthi ikhuluma ngani le ndaba</p> <p>Isifundo sesi-2 Ngesikhathi sokufunda:</p> <ul style="list-style-type: none"> • Phinda ubafundele indaba efundwe ngokudlule. Bakhombise indlela yokufunda. Isib. ukufunda ngokugeleza nangokucacile. • Qinisekisa ukuthi abafundi balalele. Isib. Ngokuthi ubuze imibuzo ngendaba, khulumani ngezithombe. 	<p>Incwadi Enkulu yoku-1: Mina nabangani bami</p>

<p>Ukufunda ngokuhlanganyela</p>	<p>Isifundo sesi-3</p> <ul style="list-style-type: none"> • Qhubeka nendaba noma ubafundele okwesibili. • Khuthaza abafundi ukuthi bafunde kanye nawe. • Chaza amagama alukhuni. Ungagcizelela namagama enomsindo obufundwa kuleli sonto. <p>Isifundo sesi-4</p> <ul style="list-style-type: none"> • Xoxa nabafundi ngokwenzeka endabeni. Abalingiswa, isizinda nendikimba yendaba. <p>Isifundo sesi-5 gemuva kokufunda</p> <ul style="list-style-type: none"> • Qhubeka ubuze abafundi imibuzo yangemuva kokufunda. 	<p>Incwadi Enkulu yoku-1: Mina nabangani bami</p>
<p>Ukufunda ngababili/ ngokuzimela</p> <p>Izifundo ezi-3 imizuzu eyi-15=45 imizuzu</p>	<p>Mabafunde buthule imibhalo ngabodwana. Abafunde nozakwabo ngokushintshana.</p>	<p>Yokufunda: Ubhalo wesi-2 Li li li Halala!</p> <p>Incwadi yokufunda yamazanga</p>
<p>Ukubhala kahle ngesandla</p> <p>Izifundo ezi-4 imizuzu eyi-15=60 imizuzu</p>	<p>Isifundo soku-1 Yalela abafundi ukuba babhale izinhlamvu ezincane. Abadwebe izinto abadwebeni babo.</p> <p>Isifundo sesi-1 Abafake imibala emidwebeni yabo yangesifundo esidlule.</p> <p>Isifundo sesi-2 Yalela abafundi ukuthi badwebe abangani babo emidwebeni wabo.</p> <p>Isifundo sesi-4 Mabafake imibala emidwebeni yabo, bayihlobise.</p>	<p>Ishadi lokubhala Iphepha lokusebenzela Incwadi yomfundi yokubhalela Amagama endikimba asodongeni</p> <p>Incwadi yokusebenzela yakwa-DBE</p>
<p>Ukubhala ngokuhlanganyela ngababili/ ngokuzimela</p> <p>Izifundo ezi-3 imizuzu eyi-15=45 imizuzu</p>	<p>Isifundo soku-1 Yalela abafundi ukuba babhale amagama nezibongo zabo.</p> <p>Abakopisha amagama amahlanu anomsindo abawufundile kuleli sonto.</p> <p>Isifundo sesi-2 Yalela abafundi ukuba baqedele umsebenzi wokukopisha amagama.</p> <p>Isifundo sesi-3 Yalela abafundi ukuthi babhale umusho ngabo.</p>	<p>Incwadi yomfundi yokubhalela</p>

Ukusetshenziswa kolimi Imizuzu engama-30	Osonhlamvukazi emagameni abantu nasezibongweni zabo. Lamula Limile	
Umbuzo wosuku/wesonto	Iluphi uhlobo lomculo owuthandayo?	Amafleshikhadi
Amagama endikimba yaleli sonto	Isibonelo:Limile iloli imali, lilili	Amafle...

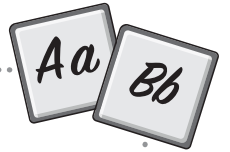
UMSEBENZI WOKU-1



Ukulalela nokukhuluma

- Haya lo mlolozelo uwunyakazele: “Ngivuka ekuseni”.

UMSEBENZI WESI-2



Ukufunda

- Hlukanisa amagama ngamalunga. (10)
- Li/ma, imali, limile, lamula,

Izimpendulo ezilindelekile

- li/ma, i/ma/li, li/mi/le, la/mu/la

UMSEBENZI WESI-3

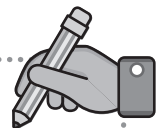


Ukufunda

- Bhala amagama ngama- 5 ngomsindo **li**.
- Funda kuthisha amagama owabhalile.

Izimpendulo zizohluka.

UMSEBENZI WESI-4



Ukubhala

- Dweba ikhanda lakho libe nezinzwa.

Izimpendulo zizohluka.

Isonto lesi-5: Konke ngami

Amagama afundwa ngokubona	Amagama anemisindo yesonto	Amagama amasha
bonke	mama	ukhlukumeza
kanye	umama	umfaniswano
kodwa	ami	izibophezelo
futhi	amagama	umtholampilo
kuhle	bami	amaxhambuzi

Amakhono	Amacebo okufundisa	Izinto okufundisa
<p>Ukulalela nokuKhuluma (L/K) x4 =15 imizuzu</p>	<p>Isifundo soku-1 Umsebenzi wansukuzonke: Siyabingelelana</p> <ul style="list-style-type: none"> • Khombisa abafundi indaba abazoyilalela ubafundele noma baqagelie ukuthi bazolalela ini namuhla. • Bafundele isihloko sendaba nase beyaqagela ukuthi indaba ikhuluma nani. • Khuluma ngemidwebo ephelileyo indaba. <p>Isifundo sesi-2</p> <ul style="list-style-type: none"> • Bafundele umbhalo Amalungelo ami,“ ulingane ngohimbo lakho abalingiswa babalalweni. • Yiba ngiqiniso sokuthi abafundi babingelelani ababuzo imibuzo ngesikhathi uqaleka okufunda. <p>Isifundo sesi-3</p> <ul style="list-style-type: none"> • Umsebenzi wansukuzonke: Siyabingelelana • Babuze imibuzwana ngabasakukhumbula ngendaba abayilalela ngesifundo esedlule. • Phinda ubafundele okwesibili. <p>Isifundo sesi-4 Umsebenzi wansukuzonke: Siyabingelelana</p> <ul style="list-style-type: none"> • Babuze imibuzo yangemuva kokulalela. 	<p>Iqoqo lemibhalo: Umbhalo wesi-3: Ikh. lesi-9: Amalungelo ami</p> <p>Iqoqo lemibhalo: Umbhalo wesi-3: Ikh. lesi-9: Amalungelo ami</p>

<p>Ukufunda nemisindo Imisindo (5x15 imizuzu)</p>	<p>Isifundo soku-1</p> <ul style="list-style-type: none"> • Thula umsindo waleli sonto u -m. • Bakhombise ukuthi uphimiswa kanjani umsindo. • Abafundi mabasho amagama abawaziyo analo msindo Isb. emi, ima, omo ami, umi, umama, umemu <p>Isifundo sesi-2:</p> <ul style="list-style-type: none"> • Bakhombise izithombe ezinalo msindo. Nabo abathasisele ngabawaziyo. • Abakhombe amagama analo msindo esiqeshaneni sendaba noma emishweni. <p>Isifundo sesi-3</p> <ul style="list-style-type: none"> • Abafundi mabakhe amagama anomsindo ofundwayo. Isib. i+ma = ima • Banike uhla lwamagama abazosusa kuma imisindo bafake owaleli sonto ukwakha amagama amasha Isb. iwa = ima, i+ma <p>Isifundo sesi-4</p> <ul style="list-style-type: none"> • Abafundi abahlukanise amagama ngezinhlamvu/ngamalunga in+ma/i+ma. • Nika abafundi amagama axovekile bona bawalungise ukuzama amagama enze umqondo. Isb. ma i+ma <p>Isifundo sesi-5</p> <ul style="list-style-type: none"> • Thisha izinto esibizelo/isipelingi ngomsindo abawaziyo. Isb. emi omo umi ami, umama, umami, mema umemu 	<p>Incwadi Yokufunda Umbhalo wesi-3: Ikh. lesi-6 Ngivuka ekuseni</p> <p>Amafrizikhadi</p> <p>Amafleshikhadi</p>
<p>Ukufunda ngokuhlanganyela X5 (imizuzu)</p>	<p>Isifundo soku-1 Nangaphambi kokufunda</p> <ul style="list-style-type: none"> • Babuze imibuzo yangaphambi kokufunda. • Bafundele isihloko sendaba. • Abaqagele ukuthi ikhuluma ngani. • Xoxani ngezithombe, basho ukuthi kwenzekalani kuzona. • Izimpendulo ezilindelekile ziyehluka. <p>Isifundo sesi-2 Ngesikhathi sokufunda:</p> <ul style="list-style-type: none"> • Bafundele okokuqala. Bakhombise indlela yokufunda, isib ukufunda ngokugeleza nangokucacile. • Qinisekisa ukuthi abafundi balalele ngokuthi ubuze imibuzo ngendaba. • Khulumani ngezithombe. 	<p>Incwadi enkulu: 1</p>

<p>Ukufunda ngokuhlanganyela X5 (imizuzu)</p>	<p>Isifundo sesi-3</p> <ul style="list-style-type: none"> • Qhubeka nendaba noma ubafundele okwesibili. • Khuthaza abafundi ukuthi bafunde kanye nawe. • Chaza amagama alukhuni. Ungagcizelela namagama anomsindo obufundwa kuleli sonto. <p>Isifundo sesi-4</p> <ul style="list-style-type: none"> • Xoxa nabafundi ngokwenzeka endabeni. Abalingiswa, isizinda nendikimba yendaba. <p>Isifundo sesi-5</p> <ul style="list-style-type: none"> • Buza abafundi imibuzo yangemuva kokufunda. • Khuthaza abafundi ukuthi bafunde kanye nawe. • Chaza amagama alukhuni. Ungagcizelela namagama anomsindo obufundwa kuleli. 	<p>Incwadi enkulu: 1</p> <p>Incwadi yokufunda: Umbhalo wesi-3 Ngivuka ekuseni</p> <p>Incwadi yokufunda ngamazinga</p>
<p>Ukufunda ngamaqembu alawulwayo: 5 X 15 imizuzu ngeqembu</p>	<ul style="list-style-type: none"> • Thisha hlukanisa abafundi ngamaqembu. • Ngenkathi usuqala neqembu lokuqala, kuba abafundi izincwajana zokufunda bafunde buthule ukuze bangaphazamisekani. • Bafundele iculo 2: Ngivuka ekuseni <p>Isifundo soku-1</p> <ul style="list-style-type: none"> • Iqembu loku 1 kuyi-awesine • Ngaphambi kokufunda: • Mabaqalabekuthi ikhuluma ngani, khuthaza imidwebo, Xoxani ngolwazi abafundi. • Babuze imibuzo yangaphambi kokufunda. • Chaza imibuzo okokuqala. Funda kanye nabo. • Izimpendulo ezilindelekile ziyehluka <p>Isifundo sesi-2</p> <ul style="list-style-type: none"> • Phinda isifundo sokuqala namaqembu alandelayo abengakalitholi ithuba lokufunda. <p>Isifundo 3</p> <ul style="list-style-type: none"> • Ngesikhathi sokufunda: • Abafunde bashintshisane, balekelelane. • Thisha bafundele kuzwakale • Xoxani ngezithombe • Khuthaza ukuthi abafundi bafunde kanye nawe • Babuze imibuzo mayelana nendaba ezokwenza ukuthi abafundi bacabange, babuke izinto ngenye indlela. 	<p>Incwadi yokufunda: Umbhalo wesi-3 Ngivuka ekuseni</p> <p>Incwadi yokufunda ngamazinga</p>

<p>Ukufunda ngamaqembu alawulwayo: 5 X 15 imizuzu ngeqembu</p>	<ul style="list-style-type: none"> • Emva kokufunda • Babuze imibuzo yangemuva kokufunda. Thola ukuthi bazizwa kanjani ngendaba njll. • Bayalele bayifunde ngabodwana, ngokulekelelana nangokushintshana. • Izimpendulo ezilindelekile • Intombazane ivuka ekuseni ibingelele. • Ngehora lesithupha. Izimpendulo zizohluka • izimpendulo zizohluka • umama • umama=u/ma/ma • Izimpendulo zizohluka • Bazodweba amawashi ngendlela efanele <p>Isifundo sesi-4</p> <ul style="list-style-type: none"> • Sebenza namaqembu amasha uwenzise isifundo sesithathu. • Isifundo sesi-5 • Qinisekisa ukuthi wonke abaqembu alitholile ithuba lokufunda. Ungabenzisa imisebenzana yokwengeza uma siskhathi sivuma. 	<p>Incwadi yokufunda: Umbhalo wesi-3 Ngivuka ekuseni</p> <p>Incwadi yokufunda ngamazanga</p>
<p>Ukufunda ngababili/ ngokuzimela 3 X15 (imizuzu)</p>	<ul style="list-style-type: none"> • Mabafunde buthule imibhalo ngabodwana. • Abafunde nozakwabo ngokushintshana. 	<p>Incwadi Yokufunda Umbhalo wesi-3: Ikh. lesi-6 Ngivuka ekuseni</p> <p>Incwadi yokufunda yamazanga Izinga loku-1: Umzimba wami</p>
<p>Ukubhala kahle ngesandla (4x15 imizuzu 1 H)</p>	<p>Isifundo soku-1</p> <ul style="list-style-type: none"> • Yalela abafundi ukuba babhale izinhlamvu ezincane ngamaqembu efanele. • Abadweba izimpendulo zabo. <p>Isifundo sesi-2:</p> <ul style="list-style-type: none"> • Abafundi ababhale emidwebeni yabo yangamandla esidlule. <p>Isifundo sesi-3</p> <ul style="list-style-type: none"> • Yalela abafundi ukuthi badweba abangani babo emidwebweni yabo. <p>Isifundo sesi-4</p> <ul style="list-style-type: none"> • Mabafake imibala emidwebweni yabo, bayihlobise. 	<p>Ishadi lokubhala Iphepha lokusebenzela Incwadi yomfundi yokubhalela Amagama endikimba asodongeni</p> <p>Incwadi yokubhalela ye-DBE</p>
<p>Ukubhala kahle ngesandla 3 X 15 (imizuzu)</p>	<p>Isifundo soku-1</p> <ul style="list-style-type: none"> • Yalela abafundi babhale amagama nesibongo sabo. • Abakopishe amagama amahlanu anomsindo abawufundile kuleli sonto. <p>Isifundo sesi-2</p> <ul style="list-style-type: none"> • Yalela abafundi ukuba baqedele umsebenzi wokukopisha amagama. <p>Isifundo sesi-3</p> <ul style="list-style-type: none"> • Yalela abafundi ukuthi babhale umusho ngabo. 	<p>Ishadi lokubhala Iphepha lokusebenzela Incwadi yomfundi yokubhalela Amagama endikimba asodongeni</p> <p>Incwadi yokubhalela yakwa-DBE</p>

Ukuhlola okungahleliwe	<ul style="list-style-type: none"> • Ukuhlola ngokwenza • Ukuhlola ngomlomo • Ukuhlola ngokubhala 	
-------------------------------	--	--

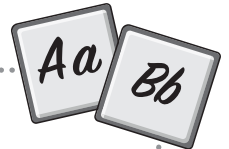
UMSEBENZI WOKU-1



Ukulalela nokukhuluma

- Xoxela uzakwenu ngokuthandile endabeni (**Amalungelo ami**) oylalele nokukhuluma sokufunda nokulalela.

UMSEBENZI WESI-2



Imisindo

- Bhala amagama amabili anomsindo...

Izimpendulo ezilindelekile zizimlaka

UMSEBENZI WESI-3



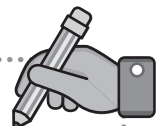
Ukufunda

- Funda umusho ukumbule ukuma njalo uma ubona unqqi (.).

Uma...

U...mu un...

UMSEBENZI WESI-4



Ukubhala

- Bhala umusho usebenzisa imisindo /amagama afundiwe.

Isonto lesi-6: Konke ngami

Amagama afundwa ngokubona	Amagama anemisindo yesonto	Amagama amasha
bonke	mama	ukuhlukumeza
kanye	umama	umfaniswano
kodwa	ami	izibophezelo
futhi	amagama	umtholampilo
kuhle	bami	amaxhaxhozi

Amakhono	Amacebo okufundisa	Izi-izalwazi disa
Ukulalela nokukhuluma (L/K) x4 =15 imizuzu	<p>Isifundo soku-1</p> <ul style="list-style-type: none"> Umsebenzi wansukuzonke: Siyabingelelana Khombisa abafundi indaba abazoyilalela ubafundele noma baqagele ukuthi baziindlela ini namuhla. Bafundele isihloko sendaba bese beyilalela ukuthi indaba ikhuluma ngani. Khuluma ngemidwebo ebalulekile indaba. Imibuzo: Babuze imibuzo ephambili indaba yangaphambi kokuba ezobenza balalele. <p>Isifundo sesi-2</p> <ul style="list-style-type: none"> Umsebenzi wansukuzonke: Siyabingelelana Bafundele ngokulandelelana i-lqoqo lemibhalo Indaba: Amalungelo ami, amakhefu, ubabaza njll. Bafundi bise kulalela yokufunda ukuze bezwelele ngemibhalo amakhefu, ubabaza njll. Babuze imibuzo ngendlela ezobenza balangazelele ukulalela indaba abayilalelayo. <p>Isifundo sesi-3</p> <ul style="list-style-type: none"> Umsebenzi wansukuzonke: Siyabingelelana Babuze imibuzwana ngabasakukhumbula ngendaba abayilalela ngesifundo esedlule. Phinda ubafundele okwesibili. <p>Isifundo sesi-4</p> <ul style="list-style-type: none"> Umsebenzi wansukuzonke: Siyabingelelana Babuze imibuzo yangemuva kokulalela. 	<p>Iqoqo lemibhalo: Umbhalo wesi-3: Ikh. lesi-9 Amalungelo ami</p> <p>Iphosta yoku-1: Ukubingelela</p> <p>Iqoqo lemibhalo: Umbhalo wesi-3: Ikh. lesi-9 Amalungelo ami</p> <p>Iphosta yoku-1: Ukubingelela</p>

<p>Ukufunda nemisindo:</p> <p>Imisindo Izifundo ezi-5 imizuzu eyi-15=75 imizuzu</p>	<p>Isifundo soku-1</p> <ul style="list-style-type: none"> • Thula umsindo waleli sonto u-b. • Bakhombise ukuthi uphimiswa kanjani umsindo. • Abafundi mabasho amagama abawaziyo analo msindo. Isb. ubaba, bemi, bami, babo, babi <p>Isifundo sesi-2</p> <ul style="list-style-type: none"> • Bakhombise izithombe ezinalo msindo. Nabo abathasisele ngabakwaziyo. • Abakhombe amagama analo msindo esiqeshaneni sendaba noma emishweni. <p>Isifundo sesi-3</p> <ul style="list-style-type: none"> • Abafundi mabakhe amagama anomsindo ofundwayo. ba+mi = bami • Banike uhla lwamagama abazosusa kuwo imisindo bafake eyaleli sonto ukwakha amagama amasha Isb. mabi = bami na = bami <p>Isifundo sesi-4</p> <ul style="list-style-type: none"> • Abafundi abahlukanise amagama ngezinhlamvu/ngamalungano mi= ba/mi • Nika abafundi amagama axovele bona bawalungise ukuba amagama enze umqondo. Isb. babo u = noba <p>Isifundo sesi-5</p> <ul style="list-style-type: none"> • Thisha, benze isihloko/isipelingi ngomsindo abafundini ubaba, umoba, babo, bemi, babi 	<p>Incwadi yokufunda Umbhalo wesi-3: Ikh. lesi-6</p> <p>Ngivuka ekuseni</p> <p>Amafleshikhadi</p> <p>Amafizikhadi</p>
<p>Ukufunda ngokuhlanganyela X 5 (imizuzu)</p>	<p>Isifundo soku-1</p> <p>Yaphambili kokufunda</p> <ul style="list-style-type: none"> • Babuze imibuzo yangaphambi kokufunda. • Bafundele isihloko sendaba. • Abaqagele ukuthi ikhuluma ngani. • Xoxani ngezithombe, ukuthi kwenzekalani kuzona. • Imibuzo ongayibuza. • Babuze imibuzo esezincwadini zokufunda yangaphambi kokufunda. <p>Isifundo sesi-2</p> <p>Ngesikhathi sokufunda:</p> <ul style="list-style-type: none"> • Bafundele okokuqala. Bakhombise indlela yokufunda. isib. ukufunda ngokugeleza nangokucacile. • Qinisekisa ukuthi abafundi balalele ngokuthi ubuze imibuzo ngendaba. • Khulumani ngezithombe. 	<p>Incwadi Enkulu yoku-1: Izinzwa zami</p>

	<p>Isifundo sesi-3</p> <ul style="list-style-type: none"> • Qhubeka nendaba noma ubafundele okwesibili. • Khuthaza abafundi ukuthi bafunde kanye nawe. • Chaza amagama alukhuni. Ungagcizelela namagama anomsindo obufundwa kuleli onto. <p>Isifundo sesi-4</p> <ul style="list-style-type: none"> • Babuze imibuzo yangemuva kokufunda. <p>Isifundo sesi-5</p> <ul style="list-style-type: none"> • Qhubeka nokubabuza imibuzo yangemuva kokufunda. • Ngabe bayithokozele indaba, bacabangani ngesiphetho sendaba. Njll. 	
<p>Ukufunda ngamaqembu alawulwayo: x 5 X 15 imizuzu ngeqembu</p>	<ul style="list-style-type: none"> • Thisha, hlukanisa abafundi ngamagama. • Ngenkathi usuqala neqembu lokuqala, khuthaza abafundi izincwajana zokufunda bafunde kanye nawe, buthule ukuze bangaphazamisekani. • Bafundele iculo 2: Ngivuka ekuseni <p>Isifundo soku-1</p> <ul style="list-style-type: none"> • Iqembu loku-1 kumkwele eme • Mabaqagele ukuthi endaba ikhuluma ngani, ngemidwebo xoxani ngolwazi abanalo. • Babuze imibuzo yangaphambi kokufunda. • Qalabafundi e okokuqala. Funda kanye nawe. • Izinto ezilindelekile ziyehluka. <p>Isifundo sesi-2</p> <ul style="list-style-type: none"> • Qhubeka usebenze namaqembu amasha. Benzise isifundo sokuqala. <p>Isifundo yesi-3</p> <p>Ngesikhathi sokufunda:</p> <ul style="list-style-type: none"> • Abafunde abashintshisane, balekelelane. • Thisha, bafundele kuzwakale. • Xoxani ngezithombe. • Khuthaza ukuthi abafundi bafunde kanye nawe. • Babuze imibuzo mayelana nendaba ezokwenza ukuthi abafundi bacabange, babuke izinto ngenye indlela. 	<p>Incwadi Yokufunda Umbhalo wesi-3: Ikh. lesi-6</p> <p>Ngivuka ekuseni</p> <p>Incwadi yokufunda yokufunda ngamazanga lzinga loku-1:</p> <p>Izinzwa zami</p>