



KEREITI

2

BUKA YA
MOITHUTI

Platinum

Dikhoundu le Diroboto

Maskew Miller Learning
10 Freedom Way, Milnerton, Cape Town, 7441

© Maskew Miller Learning (Pty) Ltd 2025

Ditokelo tsohle di sirelleditswe. Ha ho karolo ya kgatiso ena e ka hatsiwa, ya bolokwa mokgweng oo e ka hlahiswa hape ho ona, kapa ya phatlalatsa sebopehong sefe kapa sefe, ka tsela efe kapa efe (elektroniki, ka motjhine, ka kgatiso kapa ka mokgwa o mong o sele) ntle le ho re ho fumanwe pele tumello e ngotsweng fatshe ya monga ditokelo tse sirelleditsweng.

Ho kopa tumello ya ho hlahisa hape kapa ho fetola karolo efe feela ya phatlalatsa ena, ka kopo ikopantshe le sehlopha sa Ditokelo le Ditumellano ho 021 532 6000 kapa o ka romela emeli ho rightsgranting@mml.co.za. Ho tlaleha tlolo ya molao, ka kopo romella emele ho copyright@mml.co.za

E hatsiwe la 1 ka 2025

ISBN 978-1-834-95053-2
ePDF Perpetual ISBN 978-1-834-99145-0

Mophatlalatsi Whitley Makhari
Mohlophisi ya tshwereng Georgia Mehl
Moralo wa bokantle ba buka ka MML Visual Design
Setshwantsho sa bokantle ka MML Visual Design
Moralo wa buka ka MML Visual Design
Botaki ka AJ Erasmus, Angela Bowring, Illana Dillon, LT Design Worx, MML Visual Design
Tlhophiso ya mongolo ka Straive, MML Visual Design
E hatsiwe ke

Diteboho

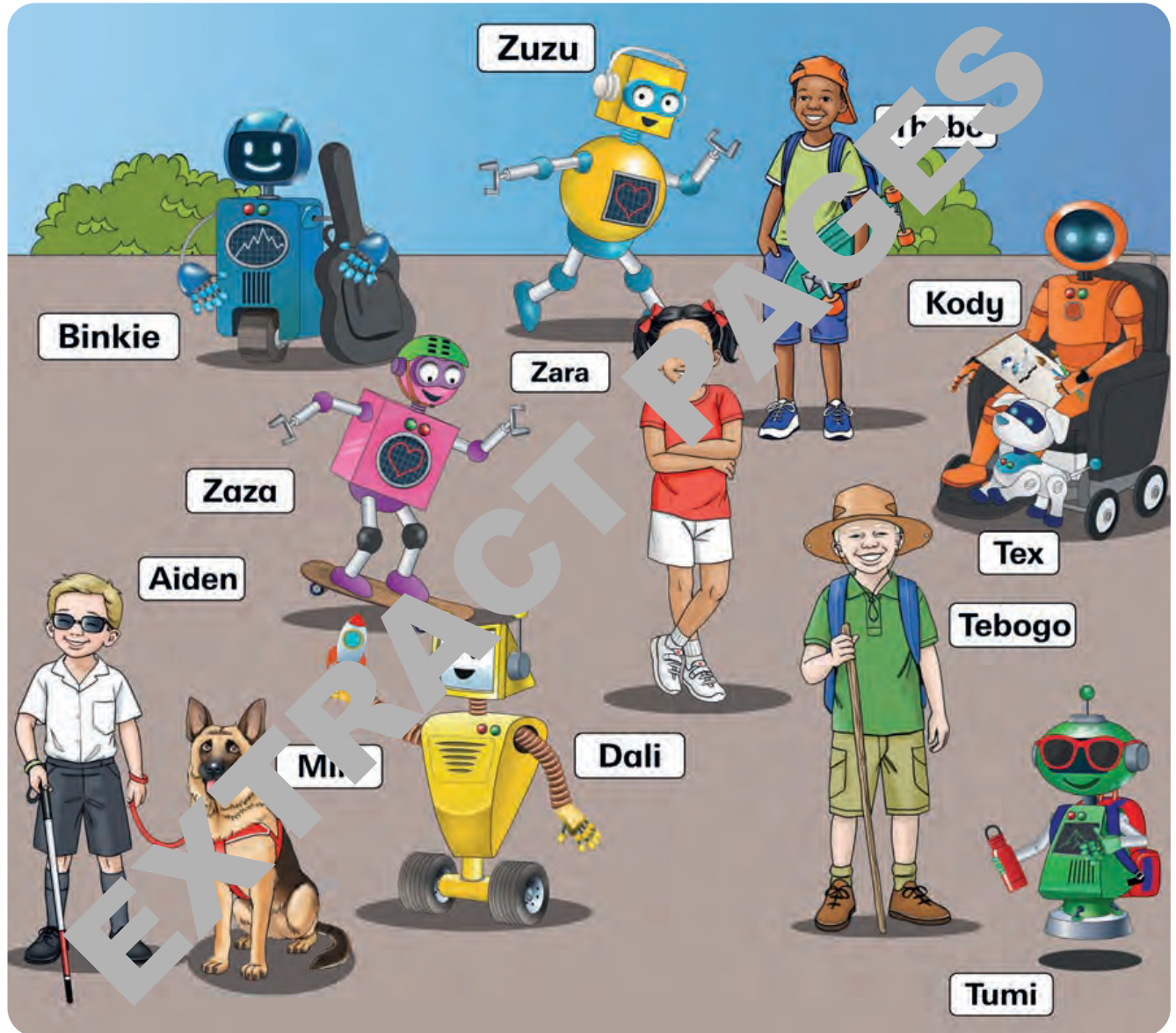
Shutterstock

l.2e, l.40b somchai; l.2f, Aimmi; l.2g, Nixx Photography; l.2h, Dmitri Disterheft; l.3a, l.6d, l.51b, l.51c, l.51d, l.51e, l.51f, l.51g, l.51h, l.51i, l.51j, l.51k, l.51l, l.51m, l.51n, l.51o, l.51p, l.51q, l.51r, l.51s, l.51t, l.51u, l.51v, l.51w, l.51x, l.51y, l.51z, l.52a, l.52b, l.52c, l.52d, l.52e, l.52f, l.52g, l.52h, l.52i, l.52j, l.52k, l.52l, l.52m, l.52n, l.52o, l.52p, l.52q, l.52r, l.52s, l.52t, l.52u, l.52v, l.52w, l.52x, l.52y, l.52z, l.53a, l.53b, l.53c, l.53d, l.53e, l.53f, l.53g, l.53h, l.53i, l.53j, l.53k, l.53l, l.53m, l.53n, l.53o, l.53p, l.53q, l.53r, l.53s, l.53t, l.53u, l.53v, l.53w, l.53x, l.53y, l.53z, l.54a, l.54b, l.54c, l.54d, l.54e, l.54f, l.54g, l.54h, l.54i, l.54j, l.54k, l.54l, l.54m, l.54n, l.54o, l.54p, l.54q, l.54r, l.54s, l.54t, l.54u, l.54v, l.54w, l.54x, l.54y, l.54z, l.55a, l.55b, l.55c, l.55d, l.55e, l.55f, l.55g, l.55h, l.55i, l.55j, l.55k, l.55l, l.55m, l.55n, l.55o, l.55p, l.55q, l.55r, l.55s, l.55t, l.55u, l.55v, l.55w, l.55x, l.55y, l.55z, l.56a, l.56b, l.56c, l.56d, l.56e, l.56f, l.56g, l.56h, l.56i, l.56j, l.56k, l.56l, l.56m, l.56n, l.56o, l.56p, l.56q, l.56r, l.56s, l.56t, l.56u, l.56v, l.56w, l.56x, l.56y, l.56z, l.57a, l.57b, l.57c, l.57d, l.57e, l.57f, l.57g, l.57h, l.57i, l.57j, l.57k, l.57l, l.57m, l.57n, l.57o, l.57p, l.57q, l.57r, l.57s, l.57t, l.57u, l.57v, l.57w, l.57x, l.57y, l.57z, l.58a, l.58b, l.58c, l.58d, l.58e, l.58f, l.58g, l.58h, l.58i, l.58j, l.58k, l.58l, l.58m, l.58n, l.58o, l.58p, l.58q, l.58r, l.58s, l.58t, l.58u, l.58v, l.58w, l.58x, l.58y, l.58z, l.59a, l.59b, l.59c, l.59d, l.59e, l.59f, l.59g, l.59h, l.59i, l.59j, l.59k, l.59l, l.59m, l.59n, l.59o, l.59p, l.59q, l.59r, l.59s, l.59t, l.59u, l.59v, l.59w, l.59x, l.59y, l.59z, l.60a, l.60b, l.60c, l.60d, l.60e, l.60f, l.60g, l.60h, l.60i, l.60j, l.60k, l.60l, l.60m, l.60n, l.60o, l.60p, l.60q, l.60r, l.60s, l.60t, l.60u, l.60v, l.60w, l.60x, l.60y, l.60z, l.61a, l.61b, l.61c, l.61d, l.61e, l.61f, l.61g, l.61h, l.61i, l.61j, l.61k, l.61l, l.61m, l.61n, l.61o, l.61p, l.61q, l.61r, l.61s, l.61t, l.61u, l.61v, l.61w, l.61x, l.61y, l.61z, l.62a, l.62b, l.62c, l.62d, l.62e, l.62f, l.62g, l.62h, l.62i, l.62j, l.62k, l.62l, l.62m, l.62n, l.62o, l.62p, l.62q, l.62r, l.62s, l.62t, l.62u, l.62v, l.62w, l.62x, l.62y, l.62z, l.63a, l.63b, l.63c, l.63d, l.63e, l.63f, l.63g, l.63h, l.63i, l.63j, l.63k, l.63l, l.63m, l.63n, l.63o, l.63p, l.63q, l.63r, l.63s, l.63t, l.63u, l.63v, l.63w, l.63x, l.63y, l.63z, l.64a, l.64b, l.64c, l.64d, l.64e, l.64f, l.64g, l.64h, l.64i, l.64j, l.64k, l.64l, l.64m, l.64n, l.64o, l.64p, l.64q, l.64r, l.64s, l.64t, l.64u, l.64v, l.64w, l.64x, l.64y, l.64z, l.65a, l.65b, l.65c, l.65d, l.65e, l.65f, l.65g, l.65h, l.65i, l.65j, l.65k, l.65l, l.65m, l.65n, l.65o, l.65p, l.65q, l.65r, l.65s, l.65t, l.65u, l.65v, l.65w, l.65x, l.65y, l.65z, l.66a, l.66b, l.66c, l.66d, l.66e, l.66f, l.66g, l.66h, l.66i, l.66j, l.66k, l.66l, l.66m, l.66n, l.66o, l.66p, l.66q, l.66r, l.66s, l.66t, l.66u, l.66v, l.66w, l.66x, l.66y, l.66z, l.67a, l.67b, l.67c, l.67d, l.67e, l.67f, l.67g, l.67h, l.67i, l.67j, l.67k, l.67l, l.67m, l.67n, l.67o, l.67p, l.67q, l.67r, l.67s, l.67t, l.67u, l.67v, l.67w, l.67x, l.67y, l.67z, l.68a, l.68b, l.68c, l.68d, l.68e, l.68f, l.68g, l.68h, l.68i, l.68j, l.68k, l.68l, l.68m, l.68n, l.68o, l.68p, l.68q, l.68r, l.68s, l.68t, l.68u, l.68v, l.68w, l.68x, l.68y, l.68z, l.69a, l.69b, l.69c, l.69d, l.69e, l.69f, l.69g, l.69h, l.69i, l.69j, l.69k, l.69l, l.69m, l.69n, l.69o, l.69p, l.69q, l.69r, l.69s, l.69t, l.69u, l.69v, l.69w, l.69x, l.69y, l.69z, l.70a, l.70b, l.70c, l.70d, l.70e, l.70f, l.70g, l.70h, l.70i, l.70j, l.70k, l.70l, l.70m, l.70n, l.70o, l.70p, l.70q, l.70r, l.70s, l.70t, l.70u, l.70v, l.70w, l.70x, l.70y, l.70z, l.71a, l.71b, l.71c, l.71d, l.71e, l.71f, l.71g, l.71h, l.71i, l.71j, l.71k, l.71l, l.71m, l.71n, l.71o, l.71p, l.71q, l.71r, l.71s, l.71t, l.71u, l.71v, l.71w, l.71x, l.71y, l.71z, l.72a, l.72b, l.72c, l.72d, l.72e, l.72f, l.72g, l.72h, l.72i, l.72j, l.72k, l.72l, l.72m, l.72n, l.72o, l.72p, l.72q, l.72r, l.72s, l.72t, l.72u, l.72v, l.72w, l.72x, l.72y, l.72z, l.73a, l.73b, l.73c, l.73d, l.73e, l.73f, l.73g, l.73h, l.73i, l.73j, l.73k, l.73l, l.73m, l.73n, l.73o, l.73p, l.73q, l.73r, l.73s, l.73t, l.73u, l.73v, l.73w, l.73x, l.73y, l.73z, l.74a, l.74b, l.74c, l.74d, l.74e, l.74f, l.74g, l.74h, l.74i, l.74j, l.74k, l.74l, l.74m, l.74n, l.74o, l.74p, l.74q, l.74r, l.74s, l.74t, l.74u, l.74v, l.74w, l.74x, l.74y, l.74z, l.75a, l.75b, l.75c, l.75d, l.75e, l.75f, l.75g, l.75h, l.75i, l.75j, l.75k, l.75l, l.75m, l.75n, l.75o, l.75p, l.75q, l.75r, l.75s, l.75t, l.75u, l.75v, l.75w, l.75x, l.75y, l.75z, l.76a, l.76b, l.76c, l.76d, l.76e, l.76f, l.76g, l.76h, l.76i, l.76j, l.76k, l.76l, l.76m, l.76n, l.76o, l.76p, l.76q, l.76r, l.76s, l.76t, l.76u, l.76v, l.76w, l.76x, l.76y, l.76z, l.77a, l.77b, l.77c, l.77d, l.77e, l.77f, l.77g, l.77h, l.77i, l.77j, l.77k, l.77l, l.77m, l.77n, l.77o, l.77p, l.77q, l.77r, l.77s, l.77t, l.77u, l.77v, l.77w, l.77x, l.77y, l.77z, l.78a, l.78b, l.78c, l.78d, l.78e, l.78f, l.78g, l.78h, l.78i, l.78j, l.78k, l.78l, l.78m, l.78n, l.78o, l.78p, l.78q, l.78r, l.78s, l.78t, l.78u, l.78v, l.78w, l.78x, l.78y, l.78z, l.79a, l.79b, l.79c, l.79d, l.79e, l.79f, l.79g, l.79h, l.79i, l.79j, l.79k, l.79l, l.79m, l.79n, l.79o, l.79p, l.79q, l.79r, l.79s, l.79t, l.79u, l.79v, l.79w, l.79x, l.79y, l.79z, l.80a, l.80b, l.80c, l.80d, l.80e, l.80f, l.80g, l.80h, l.80i, l.80j, l.80k, l.80l, l.80m, l.80n, l.80o, l.80p, l.80q, l.80r, l.80s, l.80t, l.80u, l.80v, l.80w, l.80x, l.80y, l.80z, l.81a, l.81b, l.81c, l.81d, l.81e, l.81f, l.81g, l.81h, l.81i, l.81j, l.81k, l.81l, l.81m, l.81n, l.81o, l.81p, l.81q, l.81r, l.81s, l.81t, l.81u, l.81v, l.81w, l.81x, l.81y, l.81z, l.82a, l.82b, l.82c, l.82d, l.82e, l.82f, l.82g, l.82h, l.82i, l.82j, l.82k, l.82l, l.82m, l.82n, l.82o, l.82p, l.82q, l.82r, l.82s, l.82t, l.82u, l.82v, l.82w, l.82x, l.82y, l.82z, l.83a, l.83b, l.83c, l.83d, l.83e, l.83f, l.83g, l.83h, l.83i, l.83j, l.83k, l.83l, l.83m, l.83n, l.83o, l.83p, l.83q, l.83r, l.83s, l.83t, l.83u, l.83v, l.83w, l.83x, l.83y, l.83z, l.84a, l.84b, l.84c, l.84d, l.84e, l.84f, l.84g, l.84h, l.84i, l.84j, l.84k, l.84l, l.84m, l.84n, l.84o, l.84p, l.84q, l.84r, l.84s, l.84t, l.84u, l.84v, l.84w, l.84x, l.84y, l.84z, l.85a, l.85b, l.85c, l.85d, l.85e, l.85f, l.85g, l.85h, l.85i, l.85j, l.85k, l.85l, l.85m, l.85n, l.85o, l.85p, l.85q, l.85r, l.85s, l.85t, l.85u, l.85v, l.85w, l.85x, l.85y, l.85z, l.86a, l.86b, l.86c, l.86d, l.86e, l.86f, l.86g, l.86h, l.86i, l.86j, l.86k, l.86l, l.86m, l.86n, l.86o, l.86p, l.86q, l.86r, l.86s, l.86t, l.86u, l.86v, l.86w, l.86x, l.86y, l.86z, l.87a, l.87b, l.87c, l.87d, l.87e, l.87f, l.87g, l.87h, l.87i, l.87j, l.87k, l.87l, l.87m, l.87n, l.87o, l.87p, l.87q, l.87r, l.87s, l.87t, l.87u, l.87v, l.87w, l.87x, l.87y, l.87z, l.88a, l.88b, l.88c, l.88d, l.88e, l.88f, l.88g, l.88h, l.88i, l.88j, l.88k, l.88l, l.88m, l.88n, l.88o, l.88p, l.88q, l.88r, l.88s, l.88t, l.88u, l.88v, l.88w, l.88x, l.88y, l.88z, l.89a, l.89b, l.89c, l.89d, l.89e, l.89f, l.89g, l.89h, l.89i, l.89j, l.89k, l.89l, l.89m, l.89n, l.89o, l.89p, l.89q, l.89r, l.89s, l.89t, l.89u, l.89v, l.89w, l.89x, l.89y, l.89z, l.90a, l.90b, l.90c, l.90d, l.90e, l.90f, l.90g, l.90h, l.90i, l.90j, l.90k, l.90l, l.90m, l.90n, l.90o, l.90p, l.90q, l.90r, l.90s, l.90t, l.90u, l.90v, l.90w, l.90x, l.90y, l.90z, l.91a, l.91b, l.91c, l.91d, l.91e, l.91f, l.91g, l.91h, l.91i, l.91j, l.91k, l.91l, l.91m, l.91n, l.91o, l.91p, l.91q, l.91r, l.91s, l.91t, l.91u, l.91v, l.91w, l.91x, l.91y, l.91z, l.92a, l.92b, l.92c, l.92d, l.92e, l.92f, l.92g, l.92h, l.92i, l.92j, l.92k, l.92l, l.92m, l.92n, l.92o, l.92p, l.92q, l.92r, l.92s, l.92t, l.92u, l.92v, l.92w, l.92x, l.92y, l.92z, l.93a, l.93b, l.93c, l.93d, l.93e, l.93f, l.93g, l.93h, l.93i, l.93j, l.93k, l.93l, l.93m, l.93n, l.93o, l.93p, l.93q, l.93r, l.93s, l.93t, l.93u, l.93v, l.93w, l.93x, l.93y, l.93z, l.94a, l.94b, l.94c, l.94d, l.94e, l.94f, l.94g, l.94h, l.94i, l.94j, l.94k, l.94l, l.94m, l.94n, l.94o, l.94p, l.94q, l.94r, l.94s, l.94t, l.94u, l.94v, l.94w, l.94x, l.94y, l.94z, l.95a, l.95b, l.95c, l.95d, l.95e, l.95f, l.95g, l.95h, l.95i, l.95j, l.95k, l.95l, l.95m, l.95n, l.95o, l.95p, l.95q, l.95r, l.95s, l.95t, l.95u, l.95v, l.95w, l.95x, l.95y, l.95z, l.96a, l.96b, l.96c, l.96d, l.96e, l.96f, l.96g, l.96h, l.96i, l.96j, l.96k, l.96l, l.96m, l.96n, l.96o, l.96p, l.96q, l.96r, l.96s, l.96t, l.96u, l.96v, l.96w, l.96x, l.96y, l.96z, l.97a, l.97b, l.97c, l.97d, l.97e, l.97f, l.97g, l.97h, l.97i, l.97j, l.97k, l.97l, l.97m, l.97n, l.97o, l.97p, l.97q, l.97r, l.97s, l.97t, l.97u, l.97v, l.97w, l.97x, l.97y, l.97z, l.98a, l.98b, l.98c, l.98d, l.98e, l.98f, l.98g, l.98h, l.98i, l.98j, l.98k, l.98l, l.98m, l.98n, l.98o, l.98p, l.98q, l.98r, l.98s, l.98t, l.98u, l.98v, l.98w, l.98x, l.98y, l.98z, l.99a, l.99b, l.99c, l.99d, l.99e, l.99f, l.99g, l.99h, l.99i, l.99j, l.99k, l.99l, l.99m, l.99n, l.99o, l.99p, l.99q, l.99r, l.99s, l.99t, l.99u, l.99v, l.99w, l.99x, l.99y, l.99z, l.100a, l.100b, l.100c, l.100d, l.100e, l.100f, l.100g, l.100h, l.100i, l.100j, l.100k, l.100l, l.100m, l.100n, l.100o, l.100p, l.100q, l.100r, l.100s, l.100t, l.100u, l.100v, l.100w, l.100x, l.100y, l.100z, l.101a, l.101b, l.101c, l.101d, l.101e, l.101f, l.101g, l.101h, l.101i, l.101j, l.101k, l.101l, l.101m, l.101n, l.101o, l.101p, l.101q, l.101r, l.101s, l.101t, l.101u, l.101v, l.101w, l.101x, l.101y, l.101z, l.102a, l.102b, l.102c, l.102d, l.102e, l.102f, l.102g, l.102h, l.102i, l.102j, l.102k, l.102l, l.102m, l.102n, l.102o, l.102p, l.102q, l.102r, l.102s, l.102t, l.102u, l.102v, l.102w, l.102x, l.102y, l.102z, l.103a, l.103b, l.103c, l.103d, l.103e, l.103f, l.103g, l.103h, l.103i, l.103j, l.103k, l.103l, l.103m, l.103n, l.103o, l.103p, l.103q, l.103r, l.103s, l.103t, l.103u, l.103v, l.103w, l.103x, l.103y, l.103z, l.104a, l.104b, l.104c, l.104d, l.104e, l.104f, l.104g, l.104h, l.104i, l.104j, l.104k, l.104l, l.104m, l.104n, l.104o, l.104p, l.104q, l.104r, l.104s, l.104t, l.104u, l.104v, l.104w, l.104x, l.104y, l.104z, l.105a, l.105b, l.105c, l.105d, l.105e, l.105f, l.105g, l.105h, l.105i, l.105j, l.105k, l.105l, l.105m, l.105n, l.105o, l.105p, l.105q, l.105r, l.105s, l.105t, l.105u, l.105v, l.105w, l.105x, l.105y, l.105z, l.106a, l.106b, l.106c, l.106d, l.106e, l.106f, l.106g, l.106h, l.106i, l.106j, l.106k, l.106l, l.106m, l.106n, l.106o, l.106p, l.106q, l.106r, l.106s, l.106t, l.106u, l.106v, l.106w, l.106x, l.106y, l.106z, l.107a, l.107b, l.107c, l.107d, l.107e, l.107f, l.107g, l.107h, l.107i, l.107j, l.107k, l.107l, l.107m, l.107n, l.107o, l.107p, l.107q, l.107r, l.107s, l.107t, l.107u, l.107v, l.107w, l.107x, l.107y, l.107z, l.108a, l.108b, l.108c, l.108d, l.108e, l.108f, l.108g, l.108h, l.108i, l.108j, l.108k, l.108l, l.108m, l.108n, l.108o, l.108p, l.108q, l.108r, l.108s, l.108t, l.108u, l.108v, l.108w, l.108x, l.108y, l.108z, l.109a, l.109b, l.109c, l.109d, l.109e, l.109f, l.109g, l.109h, l.109i, l.109j, l.109k, l.109l, l.109m, l.109n, l.109o, l.109p, l.109q, l.109r, l.109s, l.109t, l.109u, l.109v, l.109w, l.109x, l.109y, l.109z, l.110a, l.110b, l.110c, l.110d, l.110e, l.110f, l.110g, l.110h, l.110i, l.110j, l.110k, l.110l, l.110m, l.110n, l.110o, l.110p, l.110q, l.110r, l.110s, l.110t, l.110u, l.110v, l.110w, l.110x, l.110y, l.110z, l.111a, l.111b, l.111c, l.111d, l.111e, l.111f, l.111g, l.111h, l.111i, l.111j, l.111k, l.111l, l.111m, l.111n, l.111o, l.111p, l.111q, l.111r, l.111s, l.111t, l.111u, l.111v, l.111w, l.111x, l.111y, l.111z, l.112a, l.112b, l.112c, l.112d, l.112e, l.112f, l.112g, l.112h, l.112i, l.112j, l.112k, l.112l, l.112m, l.112n, l.112o, l.112p, l.112q, l.112r, l.112s, l.112t, l.112u, l.112v, l.112w, l.112x, l.112y, l.112z, l.113a, l.113b, l.113c, l.113d, l.113e, l.113f, l.113g, l.113h, l.113i, l.113j, l.113k, l.113l, l.113m, l.113n, l.113o, l.113p, l.113q, l.113r, l.113s, l.113t, l.113u, l.113v, l.113w, l.113x, l.113y, l.113z, l.114a, l.114b, l.114c, l.114d, l.114e, l.114f, l.114g, l.114h, l.114i, l.114j, l.114k, l.114l, l.114m, l.114n, l.114o, l.114p, l.114q, l.114r, l.114s, l.114t, l.114u, l.114v, l.114w, l.114x, l.114y, l.114z, l.115a, l.115b, l.115c, l.115d, l.115e, l.115f, l.115g, l.115h, l.115i, l.115j, l.115k, l.115l, l.115m, l.115n, l.115o, l.115p, l.115q, l.115r, l.115s, l.115t, l.115u, l.115v, l.115w, l.115x, l.115y, l.115z, l.116a, l.116b, l.116c, l.116d, l.116e, l.116f, l.116g, l.116h, l.116i, l.116j, l.116k, l.116l, l.116m, l.116n, l.116o, l.116p, l.116q, l.116r, l.116s, l.116t, l.116u, l.116v, l.116w, l.116x, l.116y, l.116z, l.117a, l.117b, l.117c, l.117d, l.117e, l.117f, l.117g, l.117h, l.117i, l.117j, l.117k, l.117l, l.117m, l.117n, l.117o, l.117p, l.117q, l.117r, l.117s, l.117t, l.117u, l.117v, l.117w, l.117x, l.117y, l.117z, l.118a, l.118b, l.118c, l.118d, l.118e, l.118f, l.118g, l.118h, l.118i, l.118j, l.118k, l.118l, l.118m, l.118n, l.118o, l.118p, l.118q, l.118r, l.118s, l.118t, l.118u, l.118v, l.118w, l.118x, l.118y, l.118z, l.119a, l.119b, l.119c, l.119d, l.119e, l.119f, l.119g, l.119h, l.119i, l.119j, l.119k, l.119l, l.119m, l.119n, l.119o, l.119p, l.119q, l.119r, l.119s, l.119t, l.119u, l.119v, l.119w, l.119x, l.119y, l.119z, l.120a, l.120b, l.120c, l.120d, l.120e, l.120f, l.120g, l.120h, l.120i, l.120j, l.120k, l.120l, l.120m, l.120n, l.120o, l.120p, l.120q, l.120r, l.120s, l.120t, l.120u, l.120v, l.120w, l.120x, l.120y, l.120z, l.121a, l.121b, l.121c, l.121d, l.121e, l.121f, l.121g, l.121h, l.121i, l

Kamohelo

Moithuti ya Ratehang,



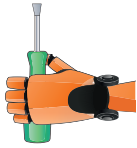



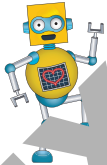



Re a o amohela bukeng ena ya baithuti e thabisang! O tla kopana le metswalle e ratehang. Metswalle ena ke batho ba nang le botho bo ikgethileng jwalo ka ba hao!



Itokisetse ho ithuta, ho bapala le ho etsa dintho tse ding le metswalle ya hao.

Thabela ho ithuta.

Mokgwa wa ho sebedisa bukantswe ena

Ha o bona:	Ho bolela:
	Nako ya ho sebeta le motswalle
	Nako ya ho sebeta le le sehlopha
	Nako ya ho sebedisa matshoho a mmele boko ba ka
	Nako ya ho taka le ngotlana
	Nako ya ho bua ka dintho
	Nako ya ho sebedisa boko le monahano
	Nako ya ho tsamaisa mmele
	Nako ya ho khouta
	Ho khouta ka ho bapala
	Nako ya ho arolelana

Ho utlwisisa mohopolo wa tataiso

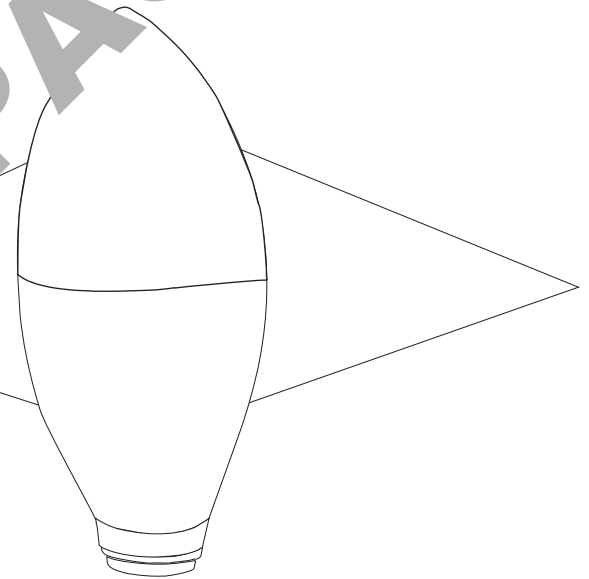
Etsa rokete

O tla hloka:

- Dithupa tse 4. Ekaba tse pentilweng, tsa le bokoo kapa tsa pampiri e sehilweng dikotwana. E ka sebedisa eng kapa eng eo o e fumanehang.
- I mmala o mokgubedu
- I mmala wa lamunu
- I bolou ba mmala wa lehodimo
- I mmala o mosehla
- Sekgomaretsi

Ho etsa rokete:

- Kopana rokete ka pampiring.
- Seta rokete e kopollotsweng.
- Taka rokete ya hao.
 - Hodimo – bo kgubedu.
 - Tlase – bo bolou ba lehodimo.
 - Ka ho le letona – mmala wa lamunu.
 - Ka ho le letshehadi – mmala o mosehla.
- Kgomaretsa rokete ya hao lebokosong.



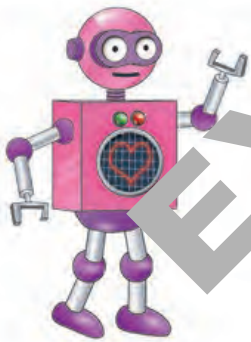
Dikahare

Kotara ya 1



Re hloka metsi hore re phele	1
Diseneke tse tletseng phepo di molemo.....	8
Mahae a tlhokomelo a etsa hore re dule re bolokehile re omme	11
Thekenoloji e bohlokwa	14
Bohle ba kgethehile	19
Re phela lefatsheng la dijithale	23
Kgetha tsela	28
Tatellano le dipaterone tse kgahlisang	34
Ditatellano tse loketseng	37
Roboto e tsamayang ya mabo.....	42
Seo ke se fumaneng	50

Kotara ya 2



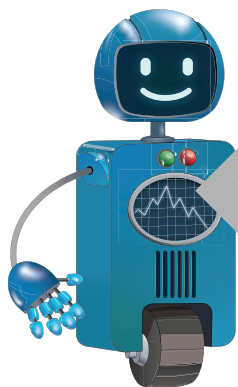
Selemo se hloka	54
Ebano swane wa sebele	62
Shoel 'roboto'	69
Ditaba ke eng?	76
Phoofolo ya ka ya pampiri	81
Sesebediswa sa ka sa dijithale	86
Kamoo thekenoloji e fetohileng kateng	92
Pholoso ya Starfish	98
Etsa mmutla wa pampiri.....	102
Thusa diphoofolo ho ya hae.....	107
Seo ke se fumaneng	111

Kotara ya 3



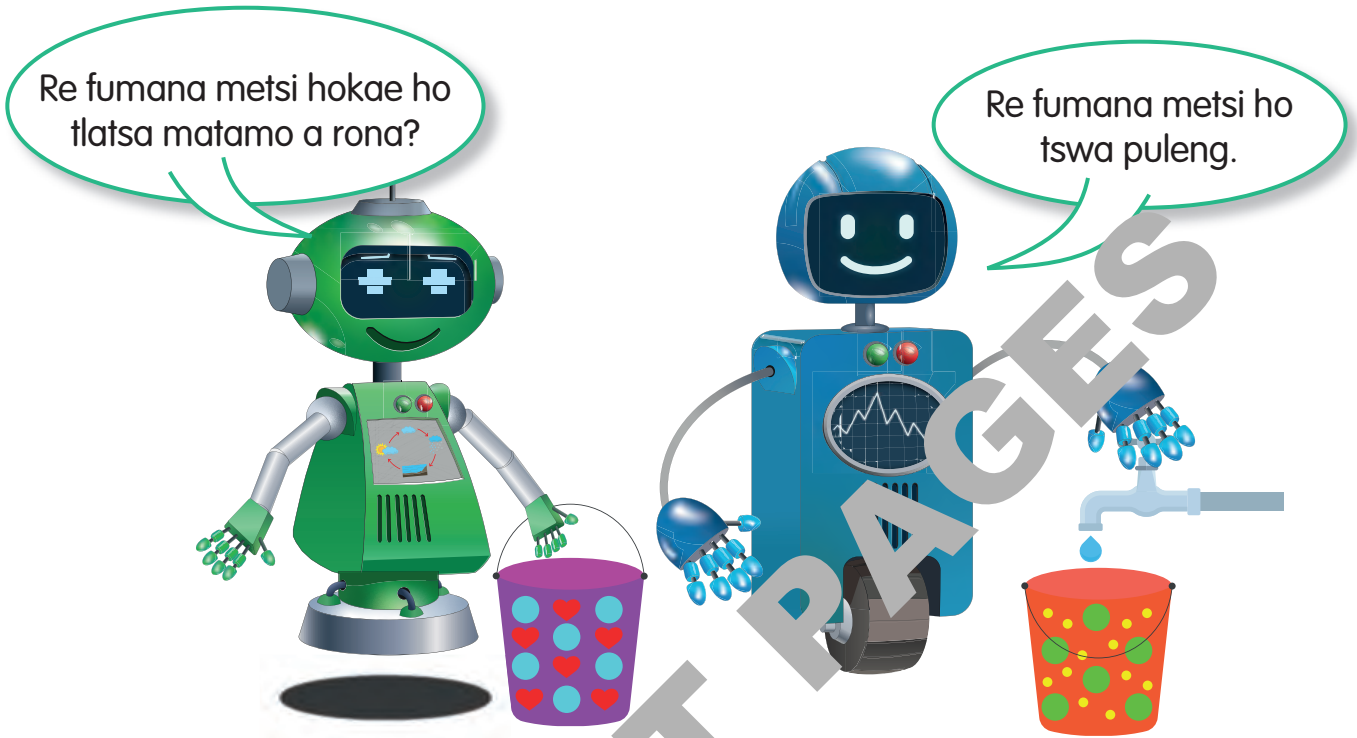
Monyaka polasing.....	118
Dipitsana tse ntle tsa dimela	125
Lokisa roboto.....	130
Fumana dibopeho polasing.....	135
Ngola melaetsa ya sephiri	139
Rarolla dikhoudu tsa sephiri	144
Difene di phodile.....	149
Fumana thuso e loketseng.....	155
Fumana tsela.....	158
Ngola khoudu	162
Seo ke se fumaneng.....	168

Kotara ya 4



Haeba e le ebe e be jwale?	176
Diripoti tsa Afrika Borwa.....	187
tshepo ya naha ya rona.....	195
Eba dipapadi tse natefisang	201
Ke moahi wa dijithale	206
Ho buisana kgale le kajeno	213
Khoudu ke eng?	217
Tsamaisa lebokoso	221
Eba hlwahlwa ka meizi.....	225
Thekenoloji e re potileng.....	229
Seo ke se fumaneng.....	234

EXTRACT PAGES



Ha re a lokela ho senya metsi... Re lokela ho boloka metsi ka moo re ka kgonang.

Ho senya metsi

Ho senya metsi bothata ka mehato e menyenyane. Ho fumana metsi mekgwa le ho etsa moralo wa ho bo rarolla, ho na le mehopolo e mene ya mantlha.

Tsela ya letsatsi le letsatsi ya ho itokisetsa ho ya sekolong.



1. Beha ditshwantsho ka tatellano e nepahetseng.
2. Sheba setshwantsho sa ka. Bua ka mehato ya ho hlapa meno.
3. Sheba tatellano ya ditshwantsho.



- a. Bua ka seo o se hlokanng ho etsa dijo tsa hoseng. Se tsotelle seo o sa se sebedisang.

Mosebetsi wa 1



Sheba ditshwantsho. Buisanang ka dipotso le motswalle wa hao.

1. Ke dinomoro tsa ditshwantsho dife tse bo pang saekele ya metsi?
2. Ke ditshwantsho dife tse pedi tsa nyallaneng le tse ding?
3. Ke tatellano efe e nepheteng ya ditshwantsho? Hlala mabobaneng.

Ho boloka metsi



Re hloka ho kwera pompo.

Hlweba



Marothodi a pula a bopeha marung. E be pula e a na.

Pokello



Dimela di ntshetsa phofudi moyeng ka mahlaku a tsona.

Kgwamo



Phofudi e bopa maru.

Ho bokella metsi a pula



Re bokella metsi a pula ho nosetsa dimela.

Moyafalo



Letsatsi le tjhesa metsi e be a moyafala.

Mosebetsi wa 2



Diroboto di entswe hore di latele ditaelo.



O tla hloka:

- poleiti ya pampiri e le 1 le thupa e motsu kapa pensele e bonale
- phini e le 1 e tlamang pampiri
- Didikadikwe tse 2 tsa 1/2
- sekere
- dikerayone tsa pensele

Mohato wa 1: Mena didikadikwe se le seng ka di kotara.



Mohato wa 2: Tanetse setshwantsho se le seng sa saekele ya metsi ka kotareng ka nngwe.



Mohato wa 3: Di take ka tatellano e nepahetseng: moyafalo, kgwamo, hlweba, pokello.



Mosebetsi wa 2 (o tswela pele)

Mohato Etsa lesoba bohareng ba
wa 4 didikadikwe ka bobedi.



Mohato Beha sedikadikwe hodimo
wa 5: se seng le ho sebedisa machini
ho di tlamella hammoo. Dikoloha le ho itluta ka
potoloho ya metsi.



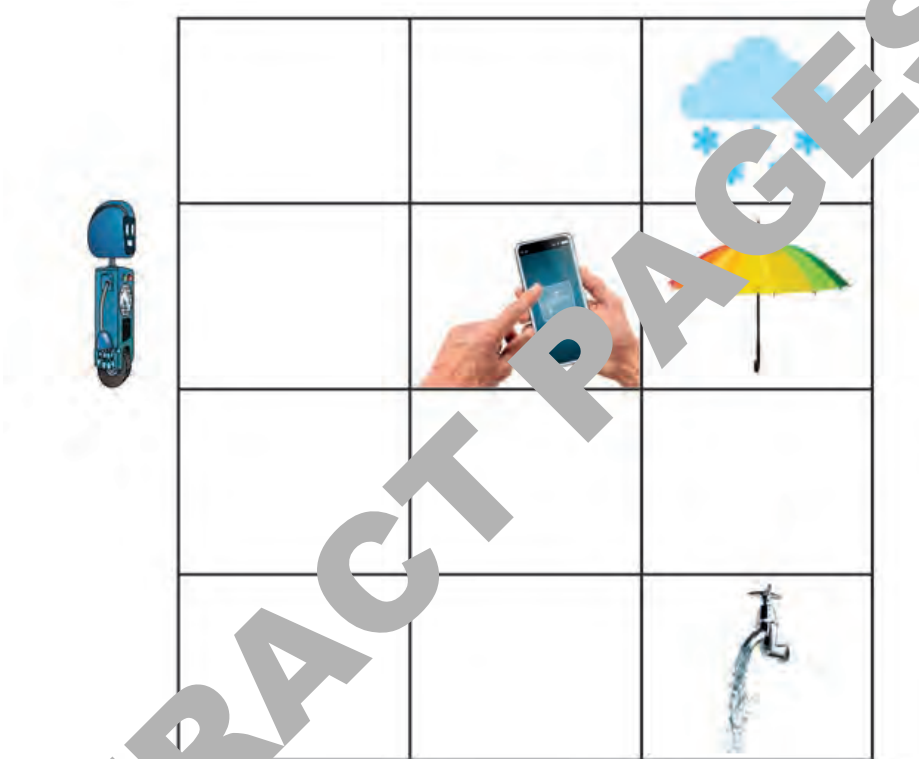
Lekola lebidi la maala saekele ya metsi.

Tsamaisa sedikadikwe se ka hodimo ho bona
setshwantsho se seng sa saekele ya metsi.

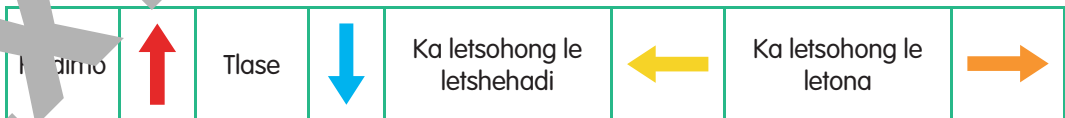
1. Na saekele e potoloha ha bobebe?
2. Na ditshwantsho di na le mebala?
3. Na ditshwantsho di eme ka tatellano e
nepahetseng?
4. Ke eng seo o ka se ntlafatsang?

Mosebetsi wa 3

Etsa ditaelo tse tla isa Binkie pompong.







Sebeletsa dikarete tse na tsa khoutu:



Mosebetsi wa 3 (o tswela pele)

- I. Eya:
- Selefounung.
 - Apo ya metsi a dutlang selefounung.
 - Pompo e buletsweng metsi.
 - Qoba pula.

O ikutlwa jwang ka mosebetsi o o entseng?

1 	2 	3 	4 
Ho leka!	Tshela!	Motlotlo!	Alilili!



Ha re qale

Ha re rarolla mathata, re be la boitsebiso ba bohlokwa e be re hlokomoloha boitsebiso bo bong.

1. Fumana dijo tse pedi tseo o lokelang ho iphapanuoa ka tsona ha o hlophisa tafole ya moketimo wa letsatsi la tswalo.



Ho arola

Ho arola ke ho hlopha dintho ka dikarolo tse nyane. Ka mohlala, 5 e ka arolwa ka 3 le 2.

Sheba dounate.

Didounate di qhaqhollotswe jwang?




Ho lemoha dipaterone

Ho lemoha dipaterone ke ho bona paterone ya dintho tse iphetang ka tatellano e tshwanang.



Ke tatellano efe ya paterone?

Mosebetsi wa 1

1. Thusa Zara  ho fumana dikhapokheiki tseo a di ratang.



1. Ke khapokheiki efe eo a tla e ja?
- a. Hobaneng o kgethile khapokheiki eo?
2. Kgetha khapokheiki eo o e ratang haholo.
- a. E qhetsole.
- b. Ke dikarolo dife tse fapaneng tse etsang khapokheiki ya hao?

Mosebetsi wa 2



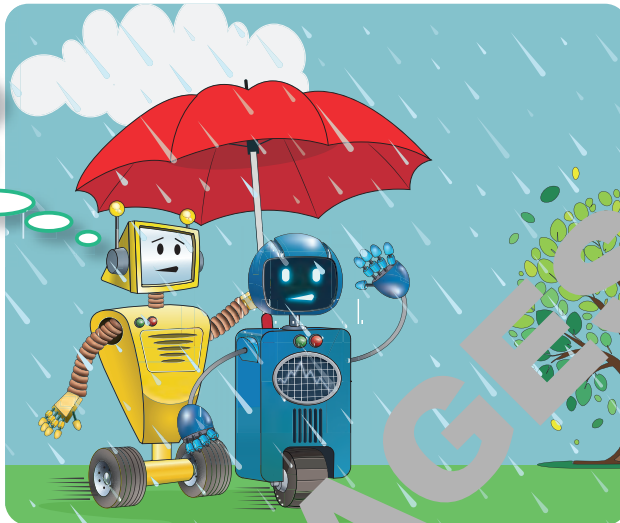
Bua le mphato wa hao.

1. Ke khapokheiki efe eo ba e ratileng ho ratana ho Mosebetsi wa 1
2. Taka le ho fana ka lebitso la khapokheiki ya motswalle wa hao.
3. Lekola motako wa motswalle wa hao. Na o takile khapokheiki ya hao e nepo? E bapise le khapokheiki e ka likeng.

O ikutlwa jwang ka mosebetsi o o entseng?

1		2		3		4	
Ho leka!	Thabile!	Motlotlo!	Alilili!				

Maemo a lehodimo a mpefala, re lokela ho ya lapeng!



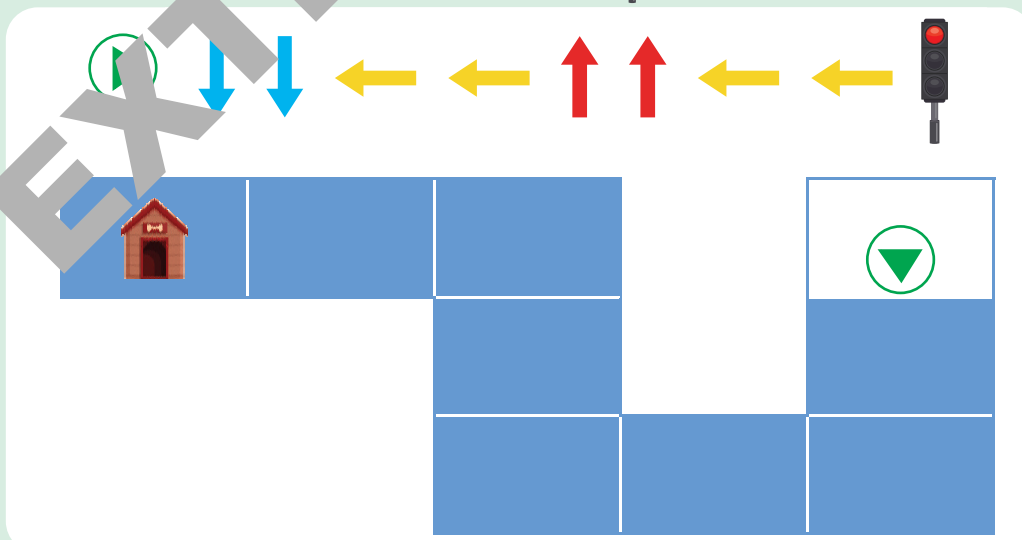
Diroboto di potlakela lapeng. Di dula maemo afe?

Ha re qale

Algorithm ke sehlopha sa taelo





Na khoudu e thusa  ho tloha puleng?




Latela khoudu e o emisa ho  :



















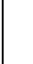

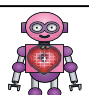









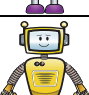










Mosebetsi wa 1

I. Roboto ka nngwe e dula hokae?

 A				
			 B	
	 C			
			 D	

Hodimo		Ka letsahong le letshehadi	
Tlase		Ka letsahong le letona	

Mosebetsi wa 1 (o tswela pele)



2. Ngola dikarabo tsa hao.
3. Ngola dikarabo tsa hao.

Sheba dipaterone. Ke mola ofe oo e seka mohlala? Buisana le motswalle wa leano.

a.

b.

c.

d.

e.

temohano oa dipaterone – lenaneo le fumanang dipaterone matšoereng a manyane, le ka re thusang ho rarolla hantle mathata a mang a kenelletseng



O ikutlwa jwang ka mosebetsi oo o o entseng?

1	2	3	4
Ho leka!	Thabile!	Motlotlo!	Alilili!



Thekenoloji e re thusa jwang?



Ha re qale

Thekenoloji ke eng?

Thekenoloji e entswe ho etsa fihlelle ditlhoko tsa botho le ho rarolla mathata a batho.

Sheba dihlahiswa. Di tseba batho molemo jwang?



Setofo



Sehatsetsi



Watjhe

thekenoloji – disebediswa tse re thusang ho etsa dintho kapele le ha bonolo

Lentswe
le letjha

Thekenoloji ya tlhahisoleseding (IT) ke tshebediso ya dikhomphyutha, *software* (khoudu), le dineteweke (sehlopha sa dikhomphyutha) ho qapa, ho boloka le ho arolelana ka tlhahisoleseding.



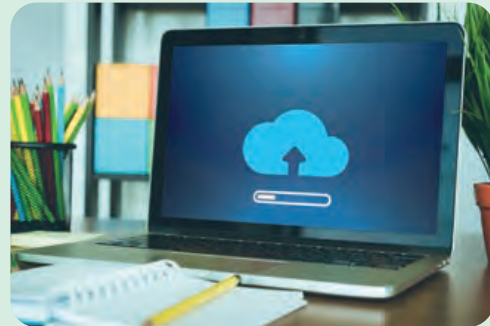
Khomphutha



Ho letsa o sebedisa vidiyo



Ho sheba inthaneteng



Ho aplouda tlhahisoleseding

Mosebetsi wa 1

Nyalanya thekenoloji ka nngwe le o le mong wa mesebetsi ya yona.



Tshepe



Lerole fatshe



Ho bua le Nkgono



Sehlwekisa ka tlung sa roboto



Diaparo tse hlwekileng, tse sosobaneng



Smart founo







Ho aha sehlahiswa sa patsi

Mosebetsi wa 2

Ngola khoutu ho thusa Binkie ho fumana sehlahiswa sa thekenoloji se bontshitsweng setshwantshong sa a ho ya ho c.

 b.			
		 a.	
	 c.		



Ho		Ma letsohong le letshehadi	
		Ka letsohong le letona	

- Binkie o batla ho romela imeile e memelang metswalle ya hae pesonameng.



Mosebetsi (o tswela pele)

2. Binkie o lekola apo ya boemo ba lehodimo ho bona bolepi.



3. Binkie o bulela sepikara hodimo ho mamela mmino.

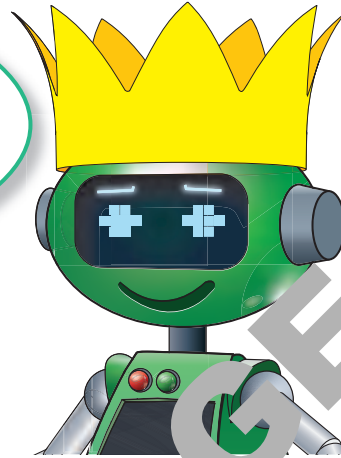


- Ngola khoudu.
- Fa e tsejana ka khoudu le motswalle wa hae.
- Lekola khoudu ya hae.
- Bua ka ho lokisa diposo dife kapa dife.

O ikhanya jwang ka mosebetsi oo o o entseng?

1		2		3		4	
Ho leka!		Thabile!		Motlotlo!		Alilili!	

"Le kgethehile ho nna kaofela," titjhere o rialo. "Ke tlo le bontsha hore korone e etswa jwang, hobane ho bohlokwa ho ikutlwa o kgethehile letsatsi le leng le le leng."



Ha re qale

Batho ba tsebang puo ya khomphyutha (khomphyuta) ba bitswa bakhouti.

Bakhouti ba ngola ditaelo e be ba di kenya ka hara roboto. Pele roboto e qala ho sebetsa, bakhouti ba etsa bonnete ba hore e e tsa mosebetsi wa yona ka nepo.

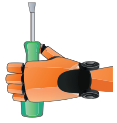


Letsoho la roboto

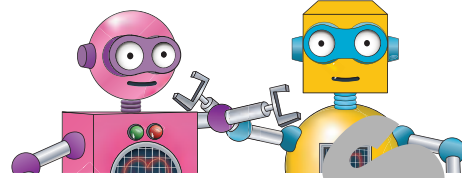


Ho hlahloba letsoho la roboto.

Mosebetsi wa 1



Etsa moqhaka wa motswalle wa hao



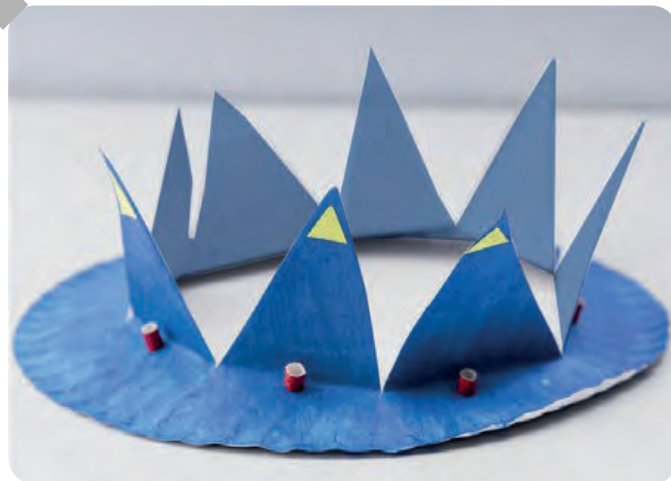
Fumana hore ke eng e tla etsa hore motswalle wa hao a ikutlwe a le betere.

Hobaneng ha motswalle wa hao a hlakile? O ka thoholetsa motswalle wa hao jwang? Na korone ya 'Ke kgethehile' e tla me thobisa?

Bua ka (hlalosa) hore korone ya hao e kgethehileng e tla shebeha jwang.

Taka kamoo korone ya hao e kgethehileng e tla shebeha kateo.

Sheba ditheko tsa kamoo o ka etsang mofuta o le mong wa korone ya pampiri. Ho na le meralo e meng e mengata



Mosebetsi wa 1 (o tswela pele)



Ditaelo

Mohato wa 1: Khalara mahlakore ka bobedi a poleiti ya pampiri ka ho sebedisa pente kapa kerayone.



Mohato wa 2: Mena poleiti ya pampiri ka halofo.



Mohato wa 3: Taka mela e meraro e ntle eba.



Mohato wa 4: Seha hodina mela kaofela e 3. O se sehe kaofihlo maphethelong a poleiti.



Mohato wa 5: Menolla poleiti mme o sehe bohareng ba mela e mennweng.



Mohato wa 6: Menolla maphethelo kaofela.



Iketsetse korone e kgethehileng.
Sebetsa ka bohlweki le ka nepo.

Mosebetsi wa 2

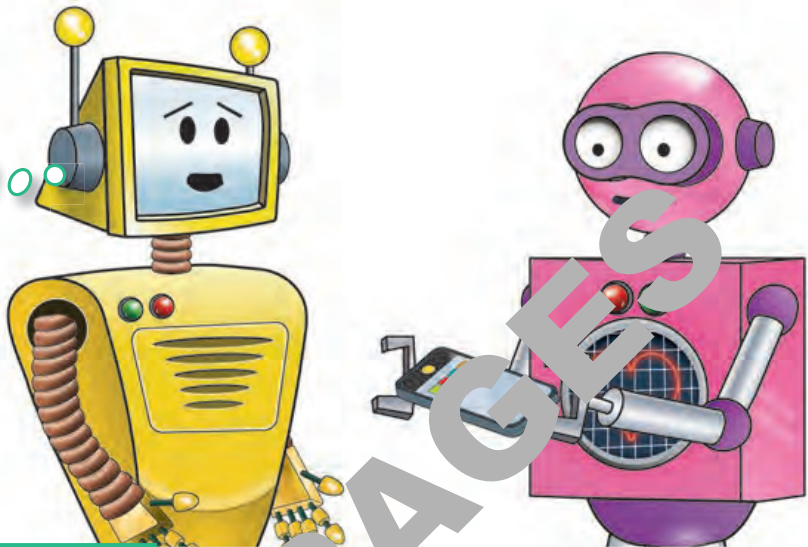


1. Na korone e lekana hlooho ya motswalle wa hao?
2. E lekana hantle hakae?
3. Ke eng seo o ka se ntlafatsang?
4. Bua ka hore motswalle wa hao o ikutlwa jwang.
 - a. O ikutlwa jwang ka ho tseba mana korone?
 - b. O ikutlwa jwang ka ho fa motho e mong korone ya hao e le moho?

O ikutlwa jwang ka mosebetsi oo o o entseng?

1		2		3		4	
Ho leba!	Thabile!	Ke motlotlo! Motlotlo!	Alilili!				

Re ka thusa Zaza jwang ho bua ka boitshepo ha a sebedisa selefounu ya hae.



Ha re qale

Ha re bua le batho intharineteng, re lokela ho ba tshwara ka tsela e tshwanang joalo ka ha eka re ne re ena le bona. Ha re buisa nako ka mekgwa ena.



Ikokobetse o be mosa, le ha o sa dumellane.



O se ke wa mo kena hanong. Emela nako ya hao ya ho bua



Kopa tumello



Nhokg'u ho phomotsa
malo a hao.



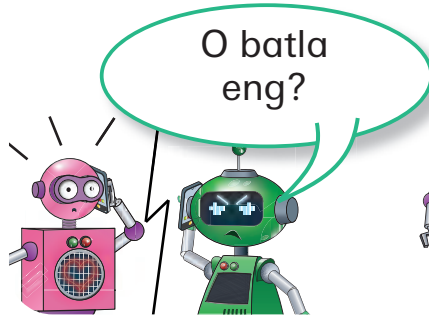
Hlophela founo ya hao.



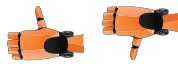
Nahana pele o romela
molaetsa.

Mosebetsi wa 1

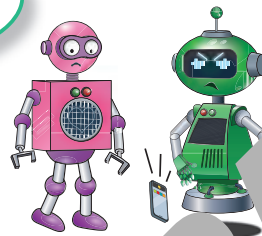
Buisanang ka tshwaelo ka nngwe ya founo le motswalle wa hao.



Na ona ke mokgwa o motle?



O lokela ho araba jwang?



Na ona ke mokgwa o motle?



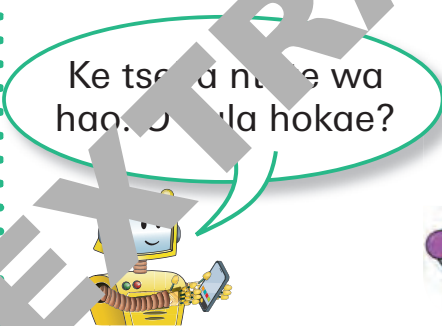
O lokela ho etsa eng?



Na ona ke mokgwa o motle?



Na o ne o ka fetola potso?



Na ena ke potso eo o lokelang ho e araba?



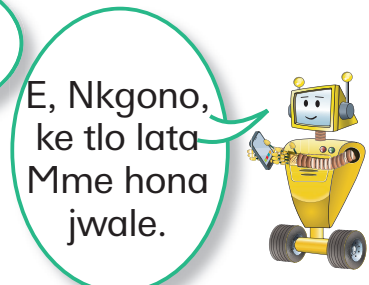
Hlalosa hobaneng



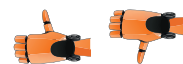
Na ona ke mokgwa o motle?



Na o ka fetola tshwaelo?



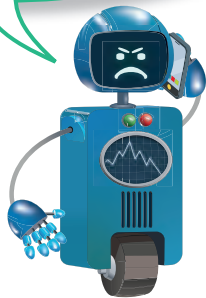
Na ona ke mokgwa o motle?



Na o ka fetola tshwaelo?

Mosebetsi wa 1 (o tswela pele)

Ke o boleletse, nke ke ka arolelana nomoro ya ka ya sephiri le wena!

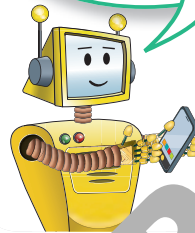


Na ona ke mokgwa o motle?



Ke eng seo a lokelang ho et? ?

Ke a leboha ha o letsitse. Ke tla o fa molaetsa.

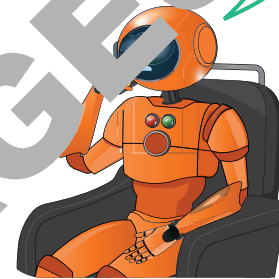


Na ona ke mokgwa o motle?



Na o ka fetola tshwaelo?

Ke o boleletse hore o se ke wa nts'wenya.



Na ona ke mokgwa o motle?



Na o ka fetola tshwaelo?

Boleletso

lokeha – Ka mehla kopa tumello ho motho e moholo pele o sebedisa sesebediswa, founo kapa thabolete. Mo bontshe seo o se etsang le hore o bua le mang.

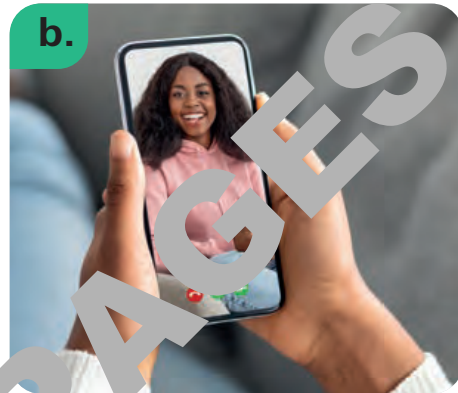
eba mosa – Ka mehla eba mosa ho ba bang inthaneteng, jwalo feela ka bophelong ba hao ba ka mehla.

Mosebetsi wa 2

Sheba setshwantsho ka seng.



Ho inka setshwantsho



Ho etsa mehala ya vidiyo

1. Na batho ba heno ba sebedisa diselefouno ka tsela ena?
2. Na ho lokile ho etsa sena pontsheng?
3. Haeba ho na le mahlale, o lokela ho nahana ka eng kapa ho hlokomela eng?

O iikutlwa jwang ka mosebetsi oo o o entseng?

1		2		3		4	
Ho leka!		Thabile!		Motlotlo!		Alilili!	