

Go efoga go eenya ka metsi

Dipotso pele ga puiso

1. Goreng metsi a le bothokwa?
2. O nwa galase tse kae tsa metsi ka letsatsi?



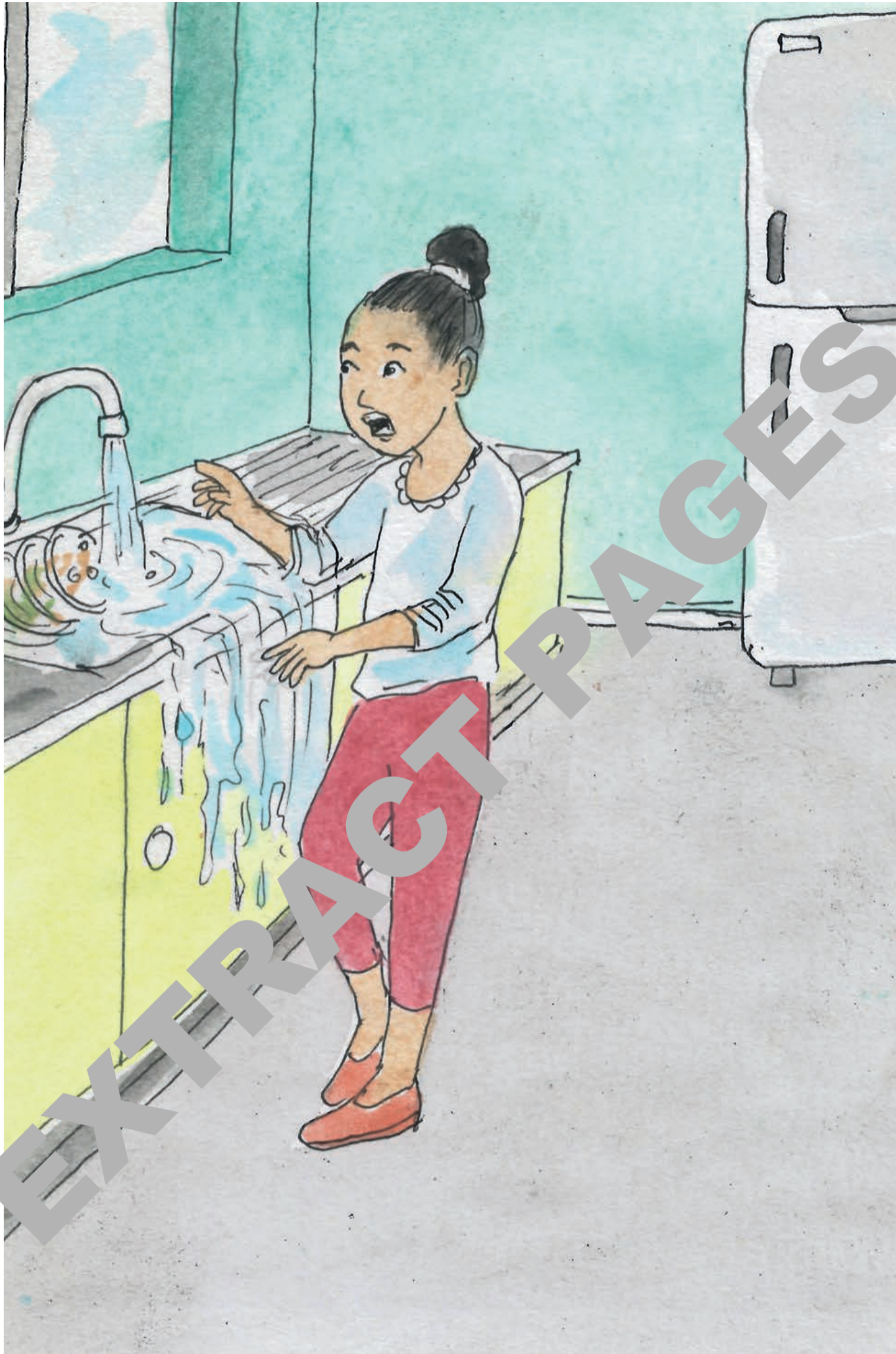
A metsi a ka kgala?
Re tlhoke metsi a seyo.
Ee! Fa re sa a somarele.



Re ka a somarela jang?
Kgosigadi nna ga ke itse.
Kgosi! Re ka a somarela.



Ke nosetse tlhaga motshegare?
Ao tlhe! E seng motshegare.
Dira jalo mo mosong.



Ke tlhatswe dijana mo tepeng?
Ao tlhe! E seng mo tepeng.
Dirisa sekotlolo go boloka metsi.



Ke tlhapele mo bateng e tletse?
Ao tlhe! E seng mo bateng.
Dirisa šawara go boloka metsi.



Ke tlhape meno ke buletse tepe?
Ao tlhe! E seng jalo.
Dirisa galase go boloka metsi.