

# Kalafo ya dikgobalo

## Dipotso pele ga puiso

- Ke eng se se mo setshwantshong?
- Koloji eno e dirisiwa go thusa batho jang?
- O tshwanetse go dira eng fa o gobetse?
- O ka thusa jang motho yo o gobetseng?
- O tthaloganya eng ka lefoko 'alafa'?



Bophelo bo bo itekanetseng bo bothokwa thata. Go bothokwa thata go phepafala le go ja sentle. Go bothokwa thata go itse mekgwa ya potlako go itshireletsa.



Motho o a tle a we mme a tswe ntho.  
Fa o tswa ntho, o e thokomela jang?  
O dira jang gore e seke ya tsena ke  
ditwatsi?



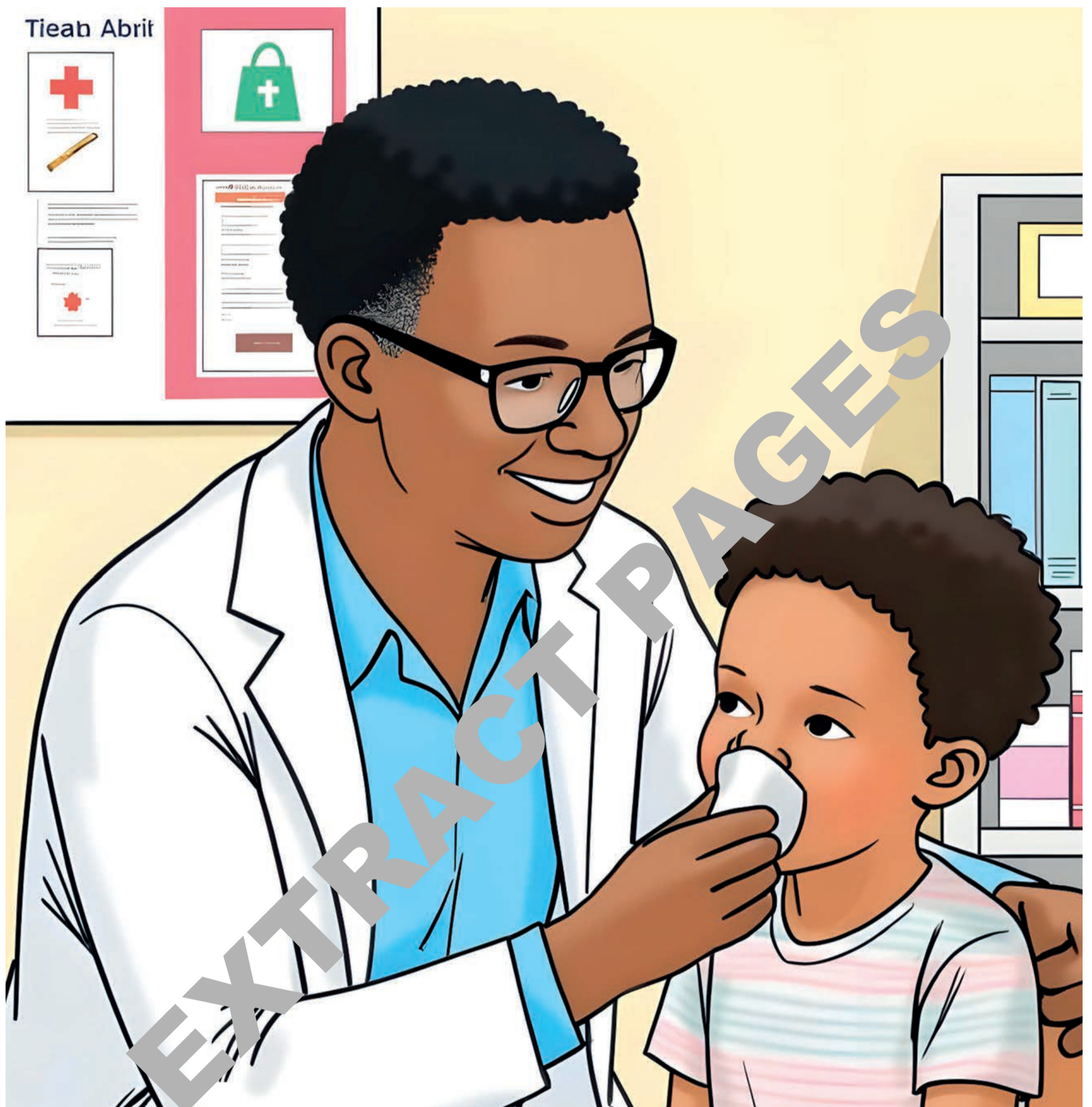
Motho o a tle a tswe mokola ka dinako dingwe. Motho o tswa mokola ka diphathana tsa nko. Ke eng se se dirang gore motho a tswe mokola?.



Dinako dingwe ke ka ntlha ya ditshika tse di sesefetseng. Gape e ka nna ka ntlha ya go kgotlha nko. E nne gape ka ntlha ya go tsenya dilo nkong.



O se lebise tlhogo kwa godimo fa mokola o tswa. Madi a ka tsena ka thamo ya mowa, wa kgamega. Go kgamega ka ntlha ya mokola go bothoko.



Se sengwe ke gore o seke wa leka go mina. Go leka go mina go tlotlheletsa madi go tswa thata. O seke wa ja dijo tse di bolelo tsa sepaese.



Inamane tlhogo e lebe fatshe o kgone go emisa mokola. O gatelele nko fa lerapong gore ditshika di tswalele mokola.

Baya toullo e e metsi ka fa morago ga tlhogo.



Fa mokola o sa emise tswelela go gatelela nko.

Mokola o tshwanetse go emisa morago ga metsotso e 5-10.

Mme fa go padile o ka ya go bona ngaka.