



IBANGA

3

INCWADI  
YOMFUNDI

# Platinum

Imibhalo efihliweyo  
NamaRobhothiksi

A. Elliott • K. Walstra • B. Willemse • M. Zeeman

Wonke amalungelo agodiwe. Ayikho ingxenye yalolushicilelo efanele yenziwe kabusha, ilondwe endaweni enokutholakala kuyo lula, noma idluliselwe phambili ngolunye uhlobo noma ngenye indlela, ye-elektroniki, kusetshenziswa imishini, ngokwenza amakhophi, ngokuqoshwa, noma kuzingxeni izindlela, ngaphandle kwemvume ebhalwe phansi yalowo onamalungelo alokho okushicilelwe.

Ukuthola imvume yokushicilela noma ukusebenzisa ingxenye layencwadini, xhumana neqembu lwamaLungelo nezimvume kule nombolo 021 532 6000 noma uthumele i-imeyili ku: rightsgranting@mml.co.za. Ukubika abaphula umthetho welungelomnikazi sicela uthumele umyalezu ku: copyright@mml.co.za.

Ishicilelwe ngowezi: 2025

ISBN 978-1-834-95143-0  
ePDF ISBN 978-1-834-97926-7

Umshicileli ngu: Whitley Makhari  
Umhleli ophethe ngu: Georgia Mehl  
Ikhava yencwadi yahlalelwa yi: MML Visual Design  
Umdwebho kwikhava yencwadi ngu: MML Visual Design  
Incwadi idizayinwe u: MML Visual Design  
Umdwebho ngu: AJ Erasmus, Angela Bowring, Illana Dillon, LT Design Worx, MML Visual Design  
Ukukhululeka kokuthayipha yi: Digital Paper Mermaid, Jsquare studio (pty) Ltd, MML Visual Design  
Igaywe abakwa:

## Ukubonga

Ababhali kanye nomshicileli babonga ukusetshenziswa kwalezi zithombe ezilandelayo:

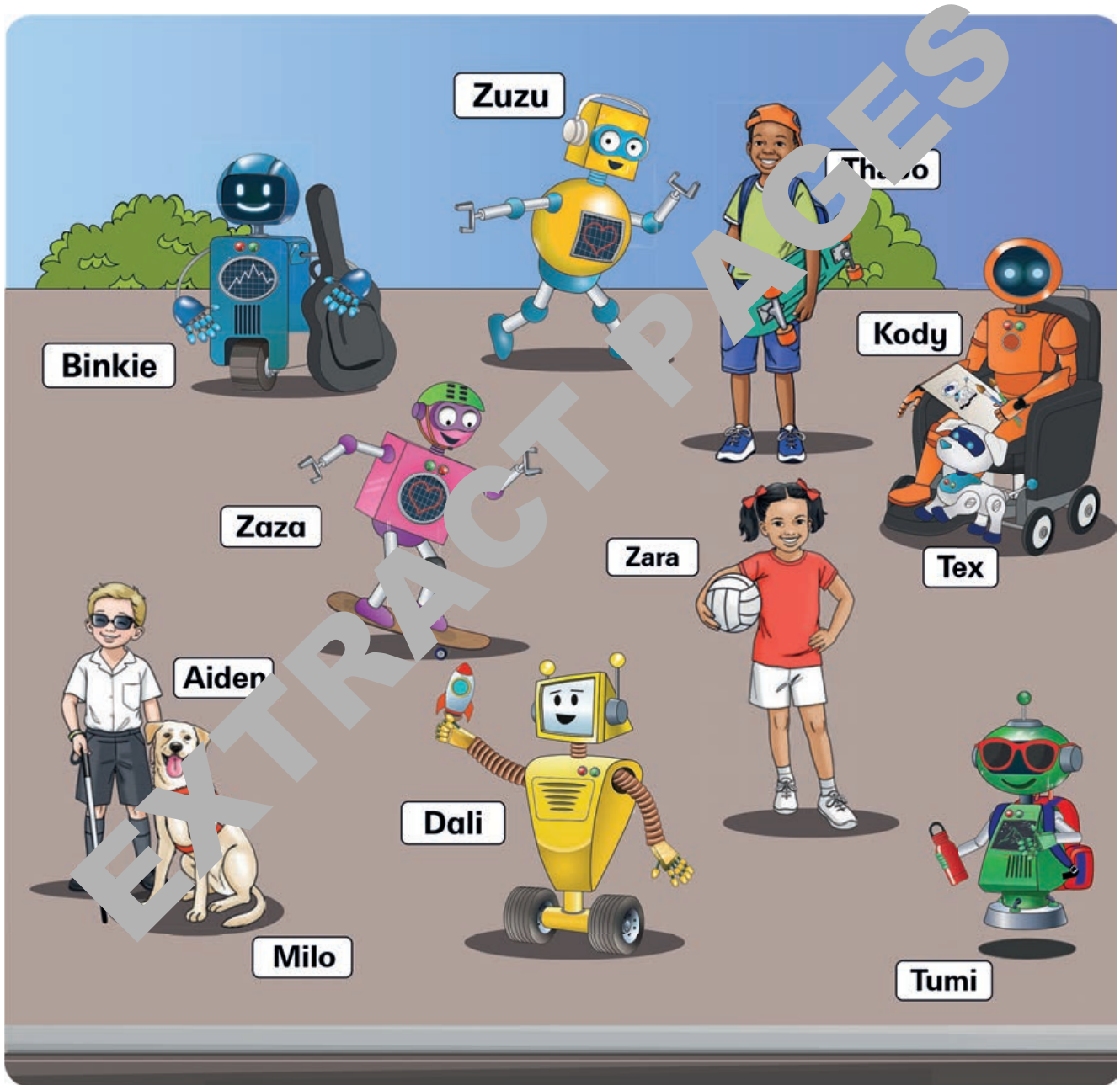
### Shutterstock:

I2a,Nadia Cruzova; 2b Sagir;I2c, Borislav Bajkic; I2d GoSlow; I2e, Meeza Design;I4a, Borislav Bajkic;I4b,Nadia Cruzova; I4c, Sagir; I4d, Meeza Design; I4e, GoSlow; I4f, Dmitri Disterheft;I6a, Engineer studio;I6b, Verzhinin89;I6c, AudriusBag;I7a, Paul Vasarhelyi; I7b, FUN FUN PHOTO; I7c, UlfisFotoart; I7d, perfectlab; I7e Ozan karatekin2; I7f, BOY ANTHONY; I8c, 19 STUDIO; I8g, rlat; I8i officeku; I10a, Yuganov Konstantin;I10b, Miroslav Dmitriy; I11c, PeopleImages;I11a, jd8;I11b, AnnaStills;I11c, Ground Picture; I15a, Andrey\_Popov; I15b, PeopleImages; I15,c SeventyFour;I16a Andrey\_Popov; I16b, goodluz; I16c, Eleonora\_os; I16d, PeopleImages; 17a-b.; Anatoliy Karlyuk; I18a, Krakenimages.com; I18b, Riccardo Mayer; I18c, Gelpi; I18d, Be; I18g, I18h, jsabirova;I19a-e, jsabirova;I21a-c, Flat vectors;I21d, The Studio;I22a, The Studio; I22b-d, Flat vectors;I23a The Mumus; I23b, CleanVector; I23c, S; I23d, yabluko\_draws; I26a, creativedesigner7; I26b, KittyVector; I27b, The Mumus; I27c, creativedesigner7; I27d, yabluko\_draws; I27e, KittyVector; I27f, S; I27g, S; I27h, S; I27i, S; I27j, S; I27k, S; I27l, S; I27m, S; I27n, S; I27o, S; I27p, S; I27q, S; I27r, S; I27s, S; I27t, S; I27u, S; I27v, S; I27w, S; I27x, S; I27y, S; I27z, S; I28a, I28b, I28c, I28d, I28e, I28f, I28g, I28h, I28i, I28j, I28k, I28l, I28m, I28n, I28o, I28p, I28q, I28r, I28s, I28t, I28u, I28v, I28w, I28x, I28y, I28z, I29a, I29b, I29c, I29d, I29e, I29f, I29g, I29h, I29i, I29j, I29k, I29l, I29m, I29n, I29o, I29p, I29q, I29r, I29s, I29t, I29u, I29v, I29w, I29x, I29y, I29z, I30a, I30b, I30c, I30d, I30e, I30f, I30g, I30h, I30i, I30j, I30k, I30l, I30m, I30n, I30o, I30p, I30q, I30r, I30s, I30t, I30u, I30v, I30w, I30x, I30y, I30z, I31a, I31b, I31c, I31d, I31e, I31f, I31g, I31h, I31i, I31j, I31k, I31l, I31m, I31n, I31o, I31p, I31q, I31r, I31s, I31t, I31u, I31v, I31w, I31x, I31y, I31z, I32a, I32b, I32c, I32d, I32e, I32f, I32g, I32h, I32i, I32j, I32k, I32l, I32m, I32n, I32o, I32p, I32q, I32r, I32s, I32t, I32u, I32v, I32w, I32x, I32y, I32z, I33a, I33b, I33c, I33d, I33e, I33f, I33g, I33h, I33i, I33j, I33k, I33l, I33m, I33n, I33o, I33p, I33q, I33r, I33s, I33t, I33u, I33v, I33w, I33x, I33y, I33z, I34a, I34b, I34c, I34d, I34e, I34f, I34g, I34h, I34i, I34j, I34k, I34l, I34m, I34n, I34o, I34p, I34q, I34r, I34s, I34t, I34u, I34v, I34w, I34x, I34y, I34z, I35a, I35b, I35c, I35d, I35e, I35f, I35g, I35h, I35i, I35j, I35k, I35l, I35m, I35n, I35o, I35p, I35q, I35r, I35s, I35t, I35u, I35v, I35w, I35x, I35y, I35z, I36a, I36b, I36c, I36d, I36e, I36f, I36g, I36h, I36i, I36j, I36k, I36l, I36m, I36n, I36o, I36p, I36q, I36r, I36s, I36t, I36u, I36v, I36w, I36x, I36y, I36z, I37a, I37b, I37c, I37d, I37e, I37f, I37g, I37h, I37i, I37j, I37k, I37l, I37m, I37n, I37o, I37p, I37q, I37r, I37s, I37t, I37u, I37v, I37w, I37x, I37y, I37z, I38a, I38b, I38c, I38d, I38e, I38f, I38g, I38h, I38i, I38j, I38k, I38l, I38m, I38n, I38o, I38p, I38q, I38r, I38s, I38t, I38u, I38v, I38w, I38x, I38y, I38z, I39a, I39b, I39c, I39d, I39e, I39f, I39g, I39h, I39i, I39j, I39k, I39l, I39m, I39n, I39o, I39p, I39q, I39r, I39s, I39t, I39u, I39v, I39w, I39x, I39y, I39z, I40a, I40b, I40c, I40d, I40e, I40f, I40g, I40h, I40i, I40j, I40k, I40l, I40m, I40n, I40o, I40p, I40q, I40r, I40s, I40t, I40u, I40v, I40w, I40x, I40y, I40z, I41a, I41b, I41c, I41d, I41e, I41f, I41g, I41h, I41i, I41j, I41k, I41l, I41m, I41n, I41o, I41p, I41q, I41r, I41s, I41t, I41u, I41v, I41w, I41x, I41y, I41z, I42a, I42b, I42c, I42d, I42e, I42f, I42g, I42h, I42i, I42j, I42k, I42l, I42m, I42n, I42o, I42p, I42q, I42r, I42s, I42t, I42u, I42v, I42w, I42x, I42y, I42z, I43a, I43b, I43c, I43d, I43e, I43f, I43g, I43h, I43i, I43j, I43k, I43l, I43m, I43n, I43o, I43p, I43q, I43r, I43s, I43t, I43u, I43v, I43w, I43x, I43y, I43z, I44a, I44b, I44c, I44d, I44e, I44f, I44g, I44h, I44i, I44j, I44k, I44l, I44m, I44n, I44o, I44p, I44q, I44r, I44s, I44t, I44u, I44v, I44w, I44x, I44y, I44z, I45a, I45b, I45c, I45d, I45e, I45f, I45g, I45h, I45i, I45j, I45k, I45l, I45m, I45n, I45o, I45p, I45q, I45r, I45s, I45t, I45u, I45v, I45w, I45x, I45y, I45z, I46a, I46b, I46c, I46d, I46e, I46f, I46g, I46h, I46i, I46j, I46k, I46l, I46m, I46n, I46o, I46p, I46q, I46r, I46s, I46t, I46u, I46v, I46w, I46x, I46y, I46z, I47a, I47b, I47c, I47d, I47e, I47f, I47g, I47h, I47i, I47j, I47k, I47l, I47m, I47n, I47o, I47p, I47q, I47r, I47s, I47t, I47u, I47v, I47w, I47x, I47y, I47z, I48a, I48b, I48c, I48d, I48e, I48f, I48g, I48h, I48i, I48j, I48k, I48l, I48m, I48n, I48o, I48p, I48q, I48r, I48s, I48t, I48u, I48v, I48w, I48x, I48y, I48z, I49a, I49b, I49c, I49d, I49e, I49f, I49g, I49h, I49i, I49j, I49k, I49l, I49m, I49n, I49o, I49p, I49q, I49r, I49s, I49t, I49u, I49v, I49w, I49x, I49y, I49z, I50a, I50b, I50c, I50d, I50e, I50f, I50g, I50h, I50i, I50j, I50k, I50l, I50m, I50n, I50o, I50p, I50q, I50r, I50s, I50t, I50u, I50v, I50w, I50x, I50y, I50z, I51a, I51b, I51c, I51d, I51e, I51f, I51g, I51h, I51i, I51j, I51k, I51l, I51m, I51n, I51o, I51p, I51q, I51r, I51s, I51t, I51u, I51v, I51w, I51x, I51y, I51z, I52a, I52b, I52c, I52d, I52e, I52f, I52g, I52h, I52i, I52j, I52k, I52l, I52m, I52n, I52o, I52p, I52q, I52r, I52s, I52t, I52u, I52v, I52w, I52x, I52y, I52z, I53a, I53b, I53c, I53d, I53e, I53f, I53g, I53h, I53i, I53j, I53k, I53l, I53m, I53n, I53o, I53p, I53q, I53r, I53s, I53t, I53u, I53v, I53w, I53x, I53y, I53z, I54a, I54b, I54c, I54d, I54e, I54f, I54g, I54h, I54i, I54j, I54k, I54l, I54m, I54n, I54o, I54p, I54q, I54r, I54s, I54t, I54u, I54v, I54w, I54x, I54y, I54z, I55a, I55b, I55c, I55d, I55e, I55f, I55g, I55h, I55i, I55j, I55k, I55l, I55m, I55n, I55o, I55p, I55q, I55r, I55s, I55t, I55u, I55v, I55w, I55x, I55y, I55z, I56a, I56b, I56c, I56d, I56e, I56f, I56g, I56h, I56i, I56j, I56k, I56l, I56m, I56n, I56o, I56p, I56q, I56r, I56s, I56t, I56u, I56v, I56w, I56x, I56y, I56z, I57a, I57b, I57c, I57d, I57e, I57f, I57g, I57h, I57i, I57j, I57k, I57l, I57m, I57n, I57o, I57p, I57q, I57r, I57s, I57t, I57u, I57v, I57w, I57x, I57y, I57z, I58a, I58b, I58c, I58d, I58e, I58f, I58g, I58h, I58i, I58j, I58k, I58l, I58m, I58n, I58o, I58p, I58q, I58r, I58s, I58t, I58u, I58v, I58w, I58x, I58y, I58z, I59a, I59b, I59c, I59d, I59e, I59f, I59g, I59h, I59i, I59j, I59k, I59l, I59m, I59n, I59o, I59p, I59q, I59r, I59s, I59t, I59u, I59v, I59w, I59x, I59y, I59z, I60a, I60b, I60c, I60d, I60e, I60f, I60g, I60h, I60i, I60j, I60k, I60l, I60m, I60n, I60o, I60p, I60q, I60r, I60s, I60t, I60u, I60v, I60w, I60x, I60y, I60z, I61a, I61b, I61c, I61d, I61e, I61f, I61g, I61h, I61i, I61j, I61k, I61l, I61m, I61n, I61o, I61p, I61q, I61r, I61s, I61t, I61u, I61v, I61w, I61x, I61y, I61z, I62a, I62b, I62c, I62d, I62e, I62f, I62g, I62h, I62i, I62j, I62k, I62l, I62m, I62n, I62o, I62p, I62q, I62r, I62s, I62t, I62u, I62v, I62w, I62x, I62y, I62z, I63a, I63b, I63c, I63d, I63e, I63f, I63g, I63h, I63i, I63j, I63k, I63l, I63m, I63n, I63o, I63p, I63q, I63r, I63s, I63t, I63u, I63v, I63w, I63x, I63y, I63z, I64a, I64b, I64c, I64d, I64e, I64f, I64g, I64h, I64i, I64j, I64k, I64l, I64m, I64n, I64o, I64p, I64q, I64r, I64s, I64t, I64u, I64v, I64w, I64x, I64y, I64z, I65a, I65b, I65c, I65d, I65e, I65f, I65g, I65h, I65i, I65j, I65k, I65l, I65m, I65n, I65o, I65p, I65q, I65r, I65s, I65t, I65u, I65v, I65w, I65x, I65y, I65z, I66a, I66b, I66c, I66d, I66e, I66f, I66g, I66h, I66i, I66j, I66k, I66l, I66m, I66n, I66o, I66p, I66q, I66r, I66s, I66t, I66u, I66v, I66w, I66x, I66y, I66z, I67a, I67b, I67c, I67d, I67e, I67f, I67g, I67h, I67i, I67j, I67k, I67l, I67m, I67n, I67o, I67p, I67q, I67r, I67s, I67t, I67u, I67v, I67w, I67x, I67y, I67z, I68a, I68b, I68c, I68d, I68e, I68f, I68g, I68h, I68i, I68j, I68k, I68l, I68m, I68n, I68o, I68p, I68q, I68r, I68s, I68t, I68u, I68v, I68w, I68x, I68y, I68z, I69a, I69b, I69c, I69d, I69e, I69f, I69g, I69h, I69i, I69j, I69k, I69l, I69m, I69n, I69o, I69p, I69q, I69r, I69s, I69t, I69u, I69v, I69w, I69x, I69y, I69z, I70a, I70b, I70c, I70d, I70e, I70f, I70g, I70h, I70i, I70j, I70k, I70l, I70m, I70n, I70o, I70p, I70q, I70r, I70s, I70t, I70u, I70v, I70w, I70x, I70y, I70z, I71a, I71b, I71c, I71d, I71e, I71f, I71g, I71h, I71i, I71j, I71k, I71l, I71m, I71n, I71o, I71p, I71q, I71r, I71s, I71t, I71u, I71v, I71w, I71x, I71y, I71z, I72a, I72b, I72c, I72d, I72e, I72f, I72g, I72h, I72i, I72j, I72k, I72l, I72m, I72n, I72o, I72p, I72q, I72r, I72s, I72t, I72u, I72v, I72w, I72x, I72y, I72z, I73a, I73b, I73c, I73d, I73e, I73f, I73g, I73h, I73i, I73j, I73k, I73l, I73m, I73n, I73o, I73p, I73q, I73r, I73s, I73t, I73u, I73v, I73w, I73x, I73y, I73z, I74a, I74b, I74c, I74d, I74e, I74f, I74g, I74h, I74i, I74j, I74k, I74l, I74m, I74n, I74o, I74p, I74q, I74r, I74s, I74t, I74u, I74v, I74w, I74x, I74y, I74z, I75a, I75b, I75c, I75d, I75e, I75f, I75g, I75h, I75i, I75j, I75k, I75l, I75m, I75n, I75o, I75p, I75q, I75r, I75s, I75t, I75u, I75v, I75w, I75x, I75y, I75z, I76a, I76b, I76c, I76d, I76e, I76f, I76g, I76h, I76i, I76j, I76k, I76l, I76m, I76n, I76o, I76p, I76q, I76r, I76s, I76t, I76u, I76v, I76w, I76x, I76y, I76z, I77a, I77b, I77c, I77d, I77e, I77f, I77g, I77h, I77i, I77j, I77k, I77l, I77m, I77n, I77o, I77p, I77q, I77r, I77s, I77t, I77u, I77v, I77w, I77x, I77y, I77z, I78a, I78b, I78c, I78d, I78e, I78f, I78g, I78h, I78i, I78j, I78k, I78l, I78m, I78n, I78o, I78p, I78q, I78r, I78s, I78t, I78u, I78v, I78w, I78x, I78y, I78z, I79a, I79b, I79c, I79d, I79e, I79f, I79g, I79h, I79i, I79j, I79k, I79l, I79m, I79n, I79o, I79p, I79q, I79r, I79s, I79t, I79u, I79v, I79w, I79x, I79y, I79z, I80a, I80b, I80c, I80d, I80e, I80f, I80g, I80h, I80i, I80j, I80k, I80l, I80m, I80n, I80o, I80p, I80q, I80r, I80s, I80t, I80u, I80v, I80w, I80x, I80y, I80z, I81a, I81b, I81c, I81d, I81e, I81f, I81g, I81h, I81i, I81j, I81k, I81l, I81m, I81n, I81o, I81p, I81q, I81r, I81s, I81t, I81u, I81v, I81w, I81x, I81y, I81z, I82a, I82b, I82c, I82d, I82e, I82f, I82g, I82h, I82i, I82j, I82k, I82l, I82m, I82n, I82o, I82p, I82q, I82r, I82s, I82t, I82u, I82v, I82w, I82x, I82y, I82z, I83a, I83b, I83c, I83d, I83e, I83f, I83g, I83h, I83i, I83j, I83k, I83l, I83m, I83n, I83o, I83p, I83q, I83r, I83s, I83t, I83u, I83v, I83w, I83x, I83y, I83z, I84a, I84b, I84c, I84d, I84e, I84f, I84g, I84h, I84i, I84j, I84k, I84l, I84m, I84n, I84o, I84p, I84q, I84r, I84s, I84t, I84u, I84v, I84w, I84x, I84y, I84z, I85a, I85b, I85c, I85d, I85e, I85f, I85g, I85h, I85i, I85j, I85k, I85l, I85m, I85n, I85o, I85p, I85q, I85r, I85s, I85t, I85u, I85v, I85w, I85x, I85y, I85z, I86a, I86b, I86c, I86d, I86e, I86f, I86g, I86h, I86i, I86j, I86k, I86l, I86m, I86n, I86o, I86p, I86q, I86r, I86s, I86t, I86u, I86v, I86w, I86x, I86y, I86z, I87a, I87b, I87c, I87d, I87e, I87f, I87g, I87h, I87i, I87j, I87k, I87l, I87m, I87n, I87o, I87p, I87q, I87r, I87s, I87t, I87u, I87v, I87w, I87x, I87y, I87z, I88a, I88b, I88c, I88d, I88e, I88f, I88g, I88h, I88i, I88j, I88k, I88l, I88m, I88n, I88o, I88p, I88q, I88r, I88s, I88t, I88u, I88v, I88w, I88x, I88y, I88z, I89a, I89b, I89c, I89d, I89e, I89f, I89g, I89h, I89i, I89j, I89k, I89l, I89m, I89n, I89o, I89p, I89q, I89r, I89s, I89t, I89u, I89v, I89w, I89x, I89y, I89z, I90a, I90b, I90c, I90d, I90e, I90f, I90g, I90h, I90i, I90j, I90k, I90l, I90m, I90n, I90o, I90p, I90q, I90r, I90s, I90t, I90u, I90v, I90w, I90x, I90y, I90z, I91a, I91b, I91c, I91d, I91e, I91f, I91g, I91h, I91i, I91j, I91k, I91l, I91m, I91n, I91o, I91p, I91q, I91r, I91s, I91t, I91u, I91v, I91w, I91x, I91y, I91z, I92a, I92b, I92c, I92d, I92e, I92f, I92g, I92h, I92i, I92j, I92k, I92l, I92m, I92n, I92o, I92p, I92q, I92r, I92s, I92t, I92u, I92v, I92w, I92x, I92y, I92z, I93a, I93b, I93c, I93d, I93e, I93f, I93g, I93h, I93i, I93j, I93k, I93l, I93m, I93n, I93o, I93p, I93q, I93r, I93s, I93t, I93u, I93v, I93w, I93x, I93y, I93z, I94a, I94b, I94c, I94d, I94e, I94f, I94g, I94h, I94i, I94j, I94k, I94l, I94m, I94n, I94o, I94p, I94q, I94r, I94s, I94t, I94u, I94v, I94w, I94x, I94y, I94z, I95a, I95b, I95c, I95d, I95e, I95f, I95g, I95h, I95i, I95j, I95k, I95l, I95m, I95n, I95o, I95p, I95q, I95r, I95s, I95t, I95u, I95v, I95w, I95x, I95y, I95z, I96a, I96b, I96c, I96d, I96e, I96f, I96g, I96h, I96i, I96j, I96k, I96l, I96m, I96n, I96o, I96p, I96q, I96r, I96s, I96t, I96u, I96v, I96w, I96x, I96y, I96z, I97a, I97b, I97c, I97d, I97e, I97f, I97g, I97h, I97i, I97j, I97k, I97l, I97m, I97n, I97o, I97p, I97q, I97r, I97s, I97t, I97u, I97v, I97w, I97x, I97y, I97z, I98a, I98b, I98c, I98d, I98e, I98f, I98g, I98h, I98i, I98j, I98k, I98l, I98m, I98n, I98o, I98p, I98q, I98r, I98s, I98t, I98u, I98v, I98w, I98x, I98y, I98z, I99a, I99b, I99c, I99d, I99e, I99f, I99g, I99h, I99i, I99j, I99k, I99l, I99m, I99n, I99o, I99p, I99q, I99r, I99s, I99t, I99u, I99v, I99w, I99x, I99y, I99z, I100a, I100b, I100c, I100d, I100e, I100f, I100g, I100h, I100i, I100j, I100k, I100l, I100m, I100n, I100o, I100p, I100q, I100r, I100s, I100t, I100u, I100v, I100w, I100x, I100y, I100z, I101a, I101b, I101c, I101d, I101e, I101f, I101g, I101h, I101i, I101j, I101k, I101l, I101m, I101n, I101o, I101p, I101q, I101r, I101s, I101t, I101u, I101v, I101w, I101x, I101y, I101z, I102a, I102b, I102c, I102d, I102e, I102f, I102g, I102h, I102i, I102j, I102k, I102l, I102m, I102n, I102o, I102p, I102q, I102r, I102s, I102t, I102u, I102v, I102w, I102x, I102y, I102z, I103a, I103b, I103c, I103d, I103e, I103f, I103g, I103h, I103i, I103j, I103k, I103l, I103m, I103n, I103o, I103p, I103q, I103r, I103s, I103t, I103u, I103v, I103w, I103x, I103y, I103z, I104a, I104b, I104c, I104d, I104e, I104f, I104g, I104h, I104i, I104j, I104k, I104l, I104m, I104n, I104o, I104p, I104q, I104r, I104s, I104t, I104u, I104v, I104w, I104x, I104y, I104z, I105a, I105b, I105c, I105d, I105e, I105f, I105g, I105h, I105i, I105j, I105k, I105l, I105m, I105n, I105o, I105p, I105q, I105r, I105s, I105t, I105u, I105v, I105w, I105x, I105y, I105z, I106a, I106b, I106c, I106d, I106e, I106f, I106g, I106h, I106i, I106j, I106k, I106l, I106m, I106n, I106o, I106p, I106q, I106r, I106s, I106t, I106u, I106v, I106w, I106x, I106y, I106z, I107a, I107b, I107c, I107d, I107e, I107f, I107g, I107h, I107i, I107j, I107k, I107l, I107m, I107n, I107o, I107p, I107q, I107r, I107s, I107t, I107u, I107v, I107w, I107x, I107y, I107z, I108a, I108b, I108c, I108d, I108e, I108f, I108g, I108h, I108i, I108j, I108k, I108l, I108m, I108n, I108o, I108p, I108q, I108r, I108s, I108t, I108u, I108v, I108w, I108x, I108y, I108z, I109a, I109b, I109c, I109d, I109e, I109f, I109g, I109h, I109i, I109j, I1

# Siyakwamukela

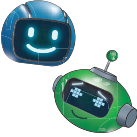

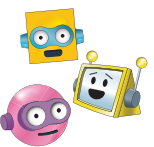







Mfundi othandekayo,

Siyakwamukela kule ncwadi ethokozisayo! Uzohlangana nabalingiswa abamangalisayo; njengoba nje umlingisi ngamunye ekhethekile ngendlela yakhe, nawe unjalo!



Lungela ukufunda, ukudlala nokusebenzisana nabangani bakho. Kujabulele ukufunda.

# Indlela yokusebenzisa lesi sichazamazwi

Uma ubona	Kusho ukuthi:	Uma ubona	Kusho ukuthi:
	isikhathi sokusebenza nomngane wami		Ukufaka amakhodi ngokubona
	isikhathi sokusebenza ngokweqembu		Isikhathi sokwabelana
	isikhathi sokusebenzisa izandlami nengqondo umni		Isikhathi sokufaka amakhodi
	isikhathi sokusebenza nokubhalisa		
	isikhathi sokukhuluma ngezinko		
	isikhathi sokusebenzisa ingqondo nomcabango wami		
	isikhathi sokunyakazisa umzimba wami		

# Ukubamba umqondo wokuqondisa

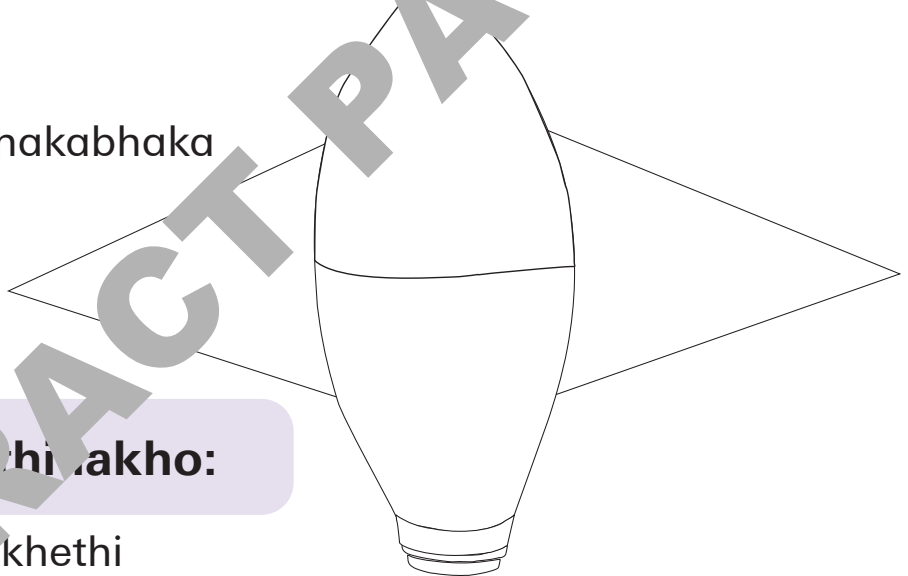
## Yenza Irokhethi:

Uzodinga:

- 4 x izinduku (lokhu kungaba izinti zikaswidi ezipelele, utshani, amakhalibhothi, noma iphepha elinombala elisikwe imidweshu. Noma ikuphi okulula kakhulu nokuncinane lakala kuwe.
- I-obomvu
- I-osawolintshi
- I-oluhlaza sasibhakabhaka
- I-ophuzi
- I-sinamathelisi

## Ukwakha irokhethi yakho:

- Ukulandelela irokhethi
- Sika nomkhondo werokhethi
- Faka umbala kwirokhethi yakho
- Phansi – obomvu
- Phansi – oluhlaza sasibhakabhaka
- Kwesokudla – osawolintshi
- Kwesobunxele - ophuzi
- Namathelisa I -rokhethi yakho ocezweni lwekhalibhothi



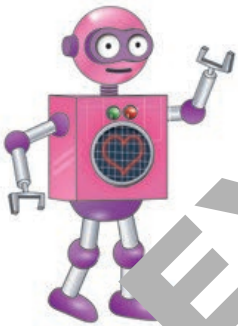
# Okuqukethwe

## Ithemu yesi- 1



Uma kungase? Kusho ukuthini? .....	1
Okumayelana nami .....	6
Masidwebe .....	10
Banemizwa enjani?.....	15
Isikhwama sami sosizo lokuqala.....	20
Ukukhetha okulungele impilo .....	31
Masakheni imoto .....	36
Izinsalela zalokho engikwenze ngokuyi-epheshe .....	43
Amalungelo akho kanye nokulungelo ami .....	50
Ngikubonisa kangakanani ukuba nomthwalo? .....	57

## Ithemu yesi- 2



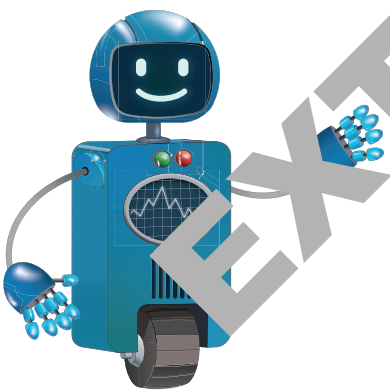
Yidla amakhala noma drethi enempilo .....	61
Kumele ngakwenze .....	66
Amaphothozi kanye nokudla okwakhiwa ngobisi okufanele ..	71
Izilobane ezinhle .....	77
Kusho ukuthini lokhu? .....	82
Yini inkinga? .....	87
Thatha izinyathelo ezilandelayo .....	92
Izigaba zohlelo lokuphila .....	100
Xazulula inkinga yezibi .....	109
Sebenzisa kabusha Vuselela Nciphisa .....	117

### Ithemu yesi- 3



Abantu abasisizayo .....	123
Ukuphrinta amaphethini.....	130
Ukulwa nokungcola .....	139
Ukwenza isitsha semâché sephepha .....	145
Ukwenza ikhodi ngeBraille .....	152
Ukuhlobisa isitsha sakho .....	158
Indlela ubuchwepheshe obushintsho ngayo .....	167
Amarobothi nezikhala .....	173
Ukuhlola ukuhleleka ka-roboti .....	179
Ukuhlola Uhlelo lo-roboti.....	185

### Ithemu yesi- 4



Imikhiqizo ezinobuso .....	194
Amarobothi emsebenzini .....	204
Amarobothi azosindisa .....	213
Ukudala ifreyimu yakho .....	219
Ukuwela isivunguvungu .....	225
Ukulinganisa isimo sezulu .....	230
Ukufaka ikhodi – ulimi lwethu oluyimfihlo .....	236
Ubuchwepheshe obusisiza .....	243
Izilwane ezisiza thina .....	249
Izinyosi ezinhle ezimatasatasa .....	257

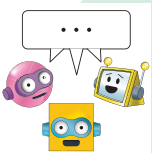
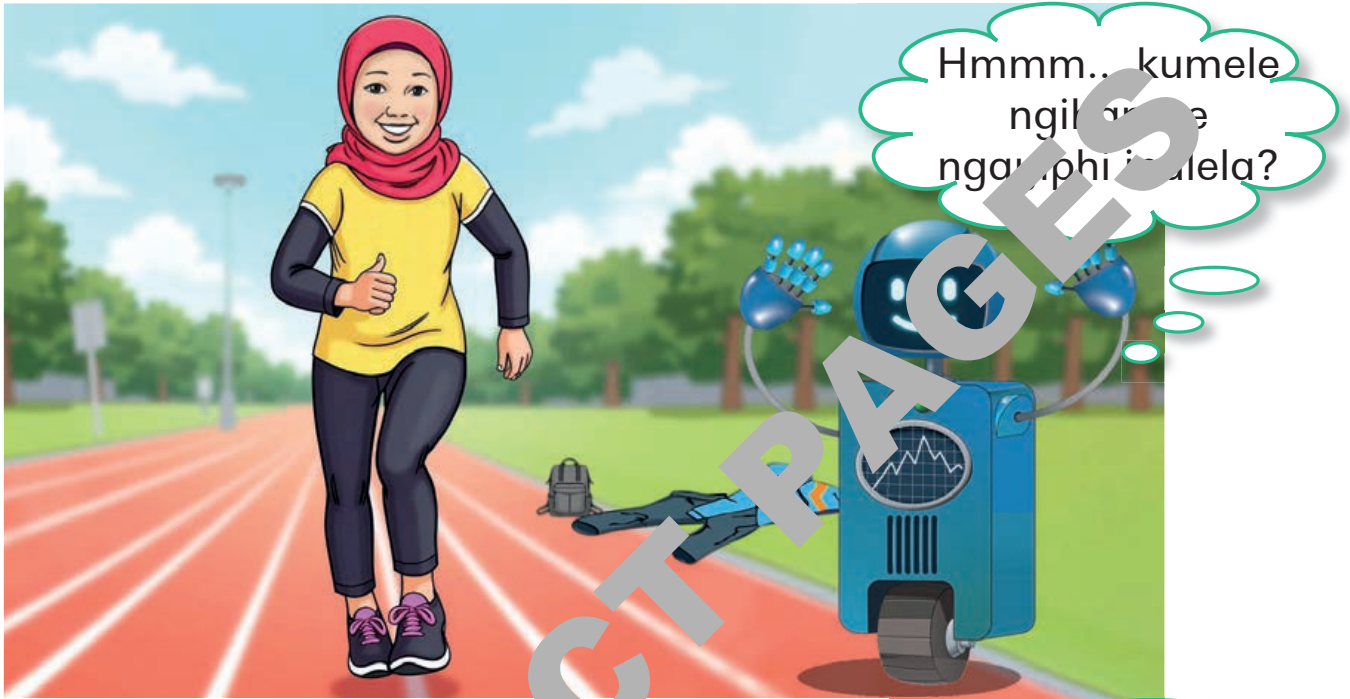
**EXTRACT PAGES**

# Uma kungase? Kusho ukuthini?

C1, C2

YiLanga Lezemidlalo esikoleni.

Sihlala sithatha izingqumo. Usithatha kanjani isinqumo?



## Masina

Ingabe lukhu kuyiphethini?

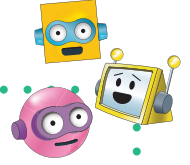
Pho, lunini uhlelo lokulandelana kwezinto?



Yebo, bhaka izimbali eziphindaphindwayo. Iphethini wuhlu lwezinto eziphindaphindwayo.

Uhlelo lokulandelana kwezinto wuhlu lwezakhi noma lwezinto. Uma ziphindaphindwa, zakha iphethini.

## Umsebenzi wesi-1



### Igridi yoku-1

1. Siza ukuthola izingubo zika-Aamina. Bheka igridi.

a. Thola izingubo zezemidlalo.





b. Thola izingubo zokuzinqokekane.

2. Akha ikhodi uzobona ebhulukhini elibomvu elifutshane.

- Ikhodi kungaba iqale emcibisholweni oluhlaza.
- Ikhodi kungaba izithiyo endleleni yakho ngokugxuma phezu kwazo.




## Umsebenzi wesi-1 (uyaqhubeka)

Phambili			
Jikela Kwesokunxele		Jikela kwesokudla	
Eqa		Phinda	② ③ ④ ⑤

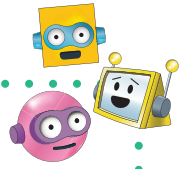
3. Bhala ikhodi bese uyihlole.
4. Cela ilungu leqembu liyihlole.

**ukuphindaphinda** – ubho kuthile kwenzeka ngokuphindaphinda.

**izakhi** – yinombini engatholakala kulandelana.

Igama elisha

## Umsebenzi wesi-2



### Igridi yesi-2

1. Bheka igridi.



a. Thola izingubo zezemidlalo.

b. Thola izingubo okuzigqokela nje.

2. Akha ikhodi omzothi **UMA** ungena ebhulokhini eliphuzi **KUSHO UKUTHI** uqoqa izingubo zezemidlalo.

- Thola kumele iqale kumcibisholo oluhlaza satshani.
- Okungenani qoqa izinto **EZINE**.



Phindisa			
Jikela kwesokunxele		Jikela kwesokudla	
Cosha		Phinda	(2) (3) (4) (5)

## Umsebenzi wesi-2 (uyaqhubeka)



3. Bhala ikhodi bese uyihlola. Khetha isithonjana esihambisana nempendulo yemibuzo.

Ingabe ikhodi inamaphutha?



Cha, awekho amaphutha!



Yiphutha elilodwa noma amabili kuphele!



Yebo, amaphutha amaningana

4. Cela ilungu leqembu elijihlola

Ingabe ikhodi iyakazulula inkinga?



Kungakazululi nako






Kuhle



Kuhle kakhulu

Uzizwa kanjani ngomsebenzi owenzile?

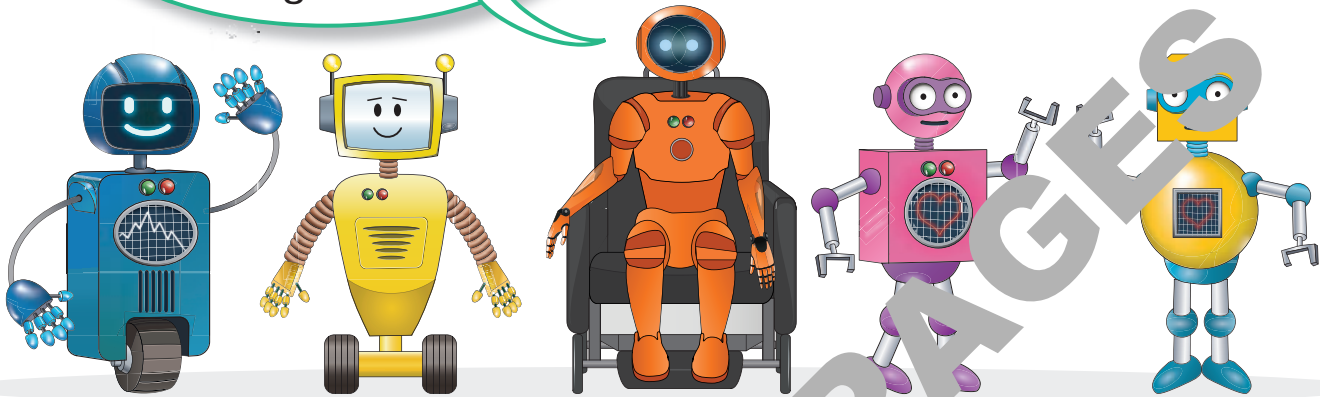
1		2		3		4	
Ngizazama!		Ngijabule!		Ngiyaziqhenya!		Yebo!	

**Uhlelo** – uhlu lwemiyalelo etshela ikhompuyutha, irobhothi noma ithoyizi ukuthi lenzeni.

**Ikhompuyutha** – umshini okusiza wenze izinto eziningi, njengokuxoxa nabanye abantu, ukudlala imidlalo kanye nokuthola ulwazi

Igama elisha

Ngifuna ukunazi kangcono nonke. Ningangixoxela ngani?



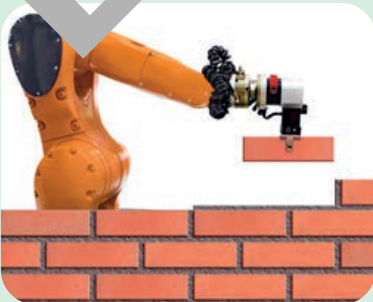
Ingabe uyazi ukuthi yiluphi ulwazi okuphephile nokungaphephile ukuba wabelane ngalo?



## Masiqalo

Irobhothi linokutheni. Lakhiwe futhi lahlelwa ngumuntu ngekhonkco yetha.

Irobhothi ilandela imiyalelo. Lisiza abantu benze imisebenzi.



## Umsebenzi woku-1



Xoxa ngokuthi la marobhothi enza miphi imisebenzi.



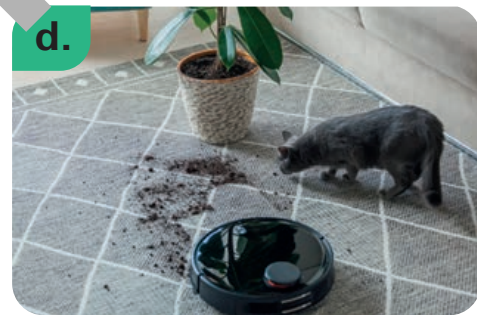
Ingalo yokwenza imisebenzi



abantu abaqoqa imfucuza



Irobhothi nokunquma utshani egcekeni



Umuntu usika utshani

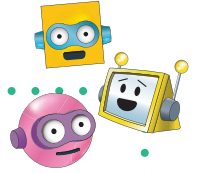


Irobhothi elihlanganisa izingxenye



Funda nge-AI

## Umsebenzi wesi-2



UKody ufuna ukufunda kabanzi ngawe. Kumele uhlakaniphe.

Uma umbuzo uqondene nawe siqu, kumele "Cha angikwazi ukukutshela lokho, kuwazi oluqondene nami siqu."



Uyini umsebenzi wakho owuthandayo?

- Uyini inombolo yakho yocingo?
- Likuphi ikheli lakho?
- Ubani igama lakho?
- Yikuphi ukudla okuthandayo?
- Ingabe uthanda u-ayisikhilimu noma i-soda?
- Ingabe uyathanda ukudansa?
- Yimuphi umbala owuthandayo?
- Yini othanda ukuyenza ngemva kwesikole?



Unemicibisholo eyi-13:

- Emi-2 'yokujikela kwesokudla'
- Eyi-9 yokuya 'phambili'.
- Emi-2 'yokujikela kwesokunxele'.

Unan-1 'wamathokheni njengoba ucosha amabali kanye' kanye nama-2 'okuphindaphinda'.

## Umsebenzi wesi-2 (uyachukumeka)

1. Bhala ikhodi. Sebenzisa imicibisholo.
2. Ikhodi kumele icoshe amakhadi amabili aphuzi kanye nokhadi eilodwa elibomvu.
3. Hlola ikhodi yakho.
4. Shintshani amabali ngekhodi yakho nomunye umuntu oqenjinini.
5. Funda ikhodi yomunye umuntu. Funda imibuzo ohlangana nawo bese uwuphendule.
6. Dhubeka njengoba iqembu lilalela imibuzo nezimpendulo. Lonke lihlola nekhodi.
7. Iqembu lilonke liyashintshisana kuzo kuhlolwe futhi kufundwe wonke amakhodi.

Uzizwa kanjani ngomsebenzi owenzile?

1		2		3		4	
Ngiyazama!		Ngijabule!		Ngiyaziqhenya!		Yebo!	



We! Singadweba futhi?

Uthanda ukudwebani?

## Masiqale

Ubuchwepheshe bukhulu ukusiza abantu bathuthukise indlela abaphila ngayo. Sithola ubuchwepheshe ezindaweni ezintathu.



Emakhaya



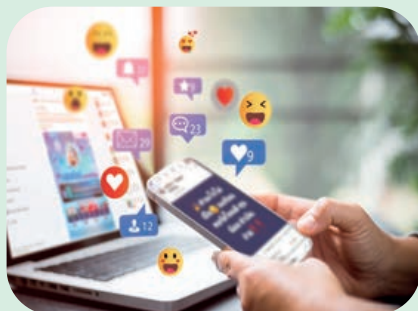
Emapulazini



Lapho sihamba

## Masiqale

Idivayisi yekhomphyutha isebenza ngolwazi lwedijithali olusisiza ukwenza imisebenzi yethu.



Ngokuxhumana ngokwedijithali.



Emsobenzini

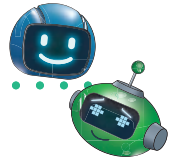


Ukuxhumanisa abantu emhlabeni wonke.

**Ulwazi lwedijithali** – ukhodi ayimfihlo enziwe ngezibali ezisetseniswa kumkomphyutha ukukhombisa izithombe, amagama nabamividiyo.

**Umkhombandlela** – umuntu oshoyo kukhomphyutha ukuthi mayenzeni.

Igama elisha



## Umsebenzi woku-1

Vumelanani ngokuthi ngubani ofundayo nokuthi ngubani irobhothi.

Umfundi ufunda ikhodi. Irobhothi liyalalela bese lidv el kugridi engabhalwe lutho. Ukuthi 'peni phezulu' lasha ukuthi shiya ibhulokhi lingabhalwe lutho.

Bhala phansi kusho ukuthi khrayona phakathi kwibhulokhi. Landela imiyalelo.

Ipeni phezulu phambili  
Ipeni phansi phambili

Umugqa ophezulu: asikho isithombe

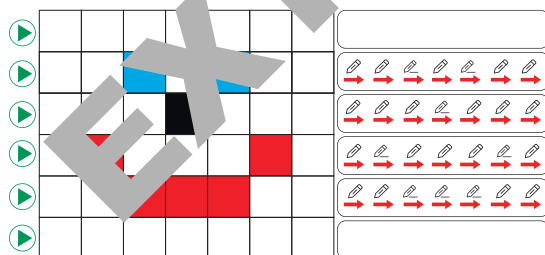
Umugqa wesibili: FPU F PD FPU FPD F F

Umugqa omusha obhalwe phansi: FPU F F FPD

Umugqa omusha obhalwe phansi: FPU FPD FPU F F FPD FPU

Umugqa omusha obhalwe phansi: FPU F FPD F F FPU F F

Umugqa omusha obhalwe phansi: asikho isithombe



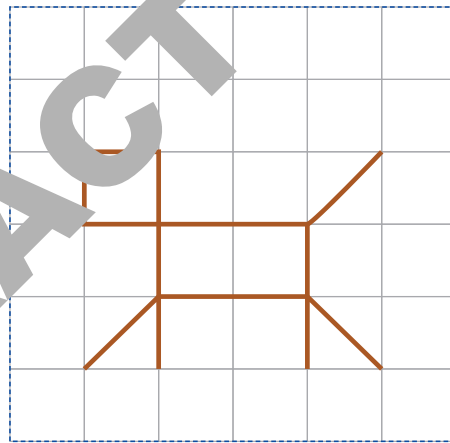
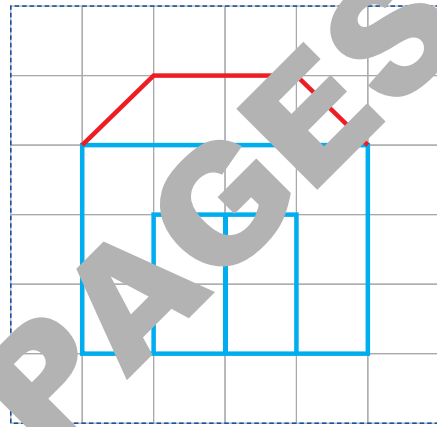
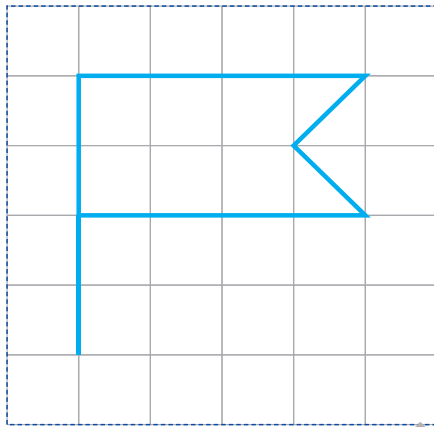
Qala ngakwesokunxele

Shintshanisa izindima nomngane wakho bese wenza umsebenzi futhi







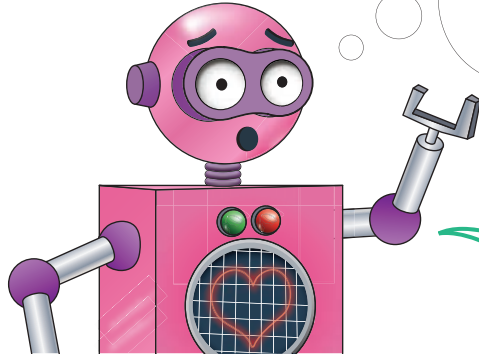
## Umsebenzi wesi-2 (uyaqhubeka)

2. Kopisha lezi zithombe kumagridi.



Uzizwa kunjani ngomsebenzi owenzile?

<p>1</p> 	<p>2</p> 	<p>3</p> 	<p>4</p> 
<p>Ngiyazama!</p>	<p>Ngijabule!</p>	<p>Ngiyaziqhanya!</p>	<p>Yebo!</p>



Banemizwa enjani?

Ubona ngani ukuthi umuntu uphatheke kanjani?

## Masiqale

**Ubuchwepheshe Bawazi (i-IT)** yizinsiza nezinhlelo esizisebenzisela ukusebenza ngemininingo kanye nemininingwane, imigembhalo, izinombolo, izithombe nemisindo.



Izinombolo

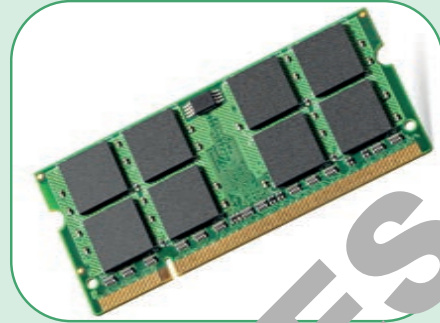


Izithombe



Umsindo

Ikhompyutha ikhumbula ulwazi. Igcina ulwazi okumele ilukhumbule.



Ikhompyutha ilondoloza futhi igcine izinhlobo zolwazi ezihlukene.



Izindaba ezibhalwe kumaphephandanga



Umsebenzi wasekhaya



Amavidiyo aku-inthanethi

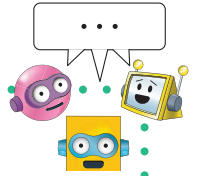
Ikhompyutha ilungisa ulwazi. Ingaxazulula izinkinga zezinhlangotho.

**Imemori** – indawo egcina lonke ulwazi olubalulekile ukuze amakhomphyutha abe nalo kanti fuithi yazi ukusebenza.

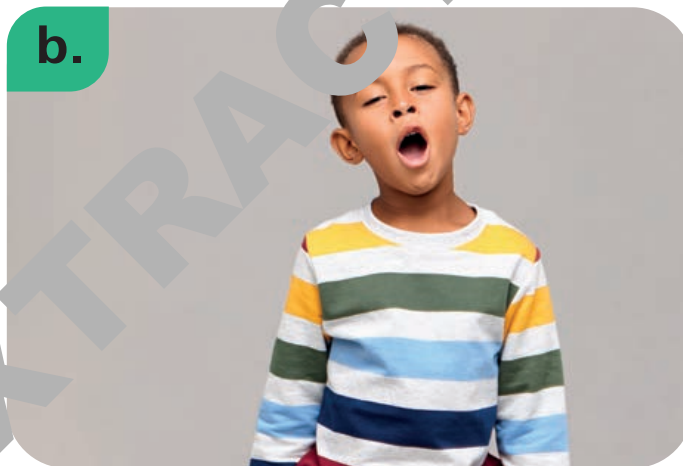
**Inqubo** – ifana nohlelo lokupheka olukukhombisa indlela yokwenza into ethile.



## Umsebenzi woku-1

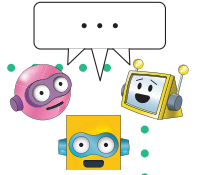


Buka isithombe. Khetha isithonjani esihambisanayo.



- 1.
- 2.
- 3.
- 4.
- 5.
- 6.

## Umsebenzi wesi-2



Sizwa imizwa ehlukene zonke izinsuku.

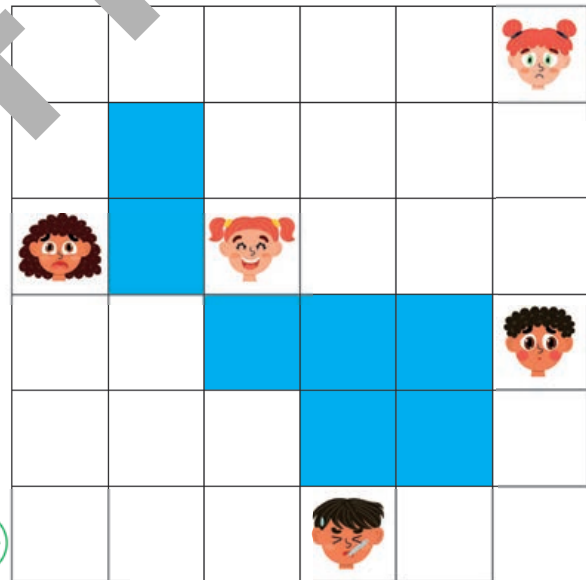


1. Sebenzisa unxantathu woku-1

a. Bhala ikhodi yokuqoqa yonke imizwa emi-5 ekugridi

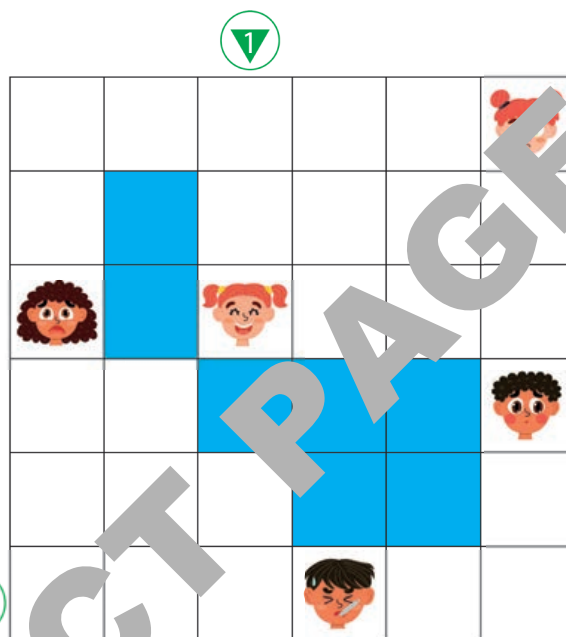
b. Hlola ikhodi.

c. Lungisa iphutha: Bheka isuka ikhodi yakho bese uthole ikhodi eliphi iphutha elikhona.



## Umsebenzi wesi-2 (uyaqhubeka)

2. Sebenzisa unxantathu wesi-2 ▶.



a. Bhala ikhodi yokuqoqa yonke imizwa emi-  
khekeke ek gridi.





b. Nhlola ikhodi.

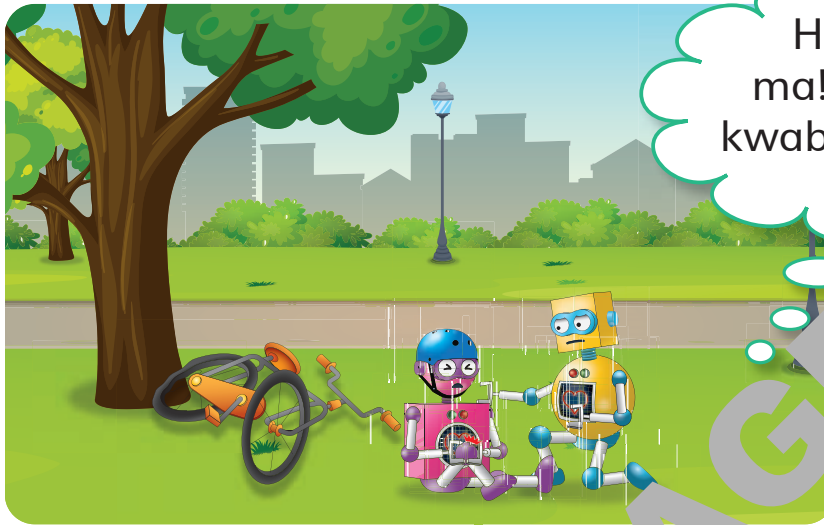
c. Lungisa inkinga uma kunesidingo.

d. Ukhetha muphi umzila?

4. Finyeza ikhodi yalowo owukhethayo.

Uzizwa kanjani ngomsebenzi owenzile?

1 	2 	3 	4 
Ngiyazama!	Ngijabule!	Ngiyaziqhenya!	Yebo!



Ngenye inkathi siba sengozini bese sidingeni isikhwama sosizo lokuqala.

## Masiqale

Izingozi ziyezuka. Kumele uqikelele futhi uphephe emhlabeni wangempela nalapho uthengisa ngwe-inthanethi.

1. Funda izindaba ezine.
2. Xoxani ngendlela yokuziphatha ephephile nengaphephile. Lezi zindaba zingaba namuthelela muni esimweni sethu sempilo nakwezokuphepha?
3. Qhathanisa isithombe esiyinombolo nohlamvu lwamagama olufanele. Bhala inombolo nohlamvu lwamagama kuphela.



**Indlela yokuziphatha engaphephile**

1.



Ngigibela ibhayisikili lami ngibe ngikhuluma nocingo

2.



Ngiwela umgwaqo ngibe ngibhala efonini yami.

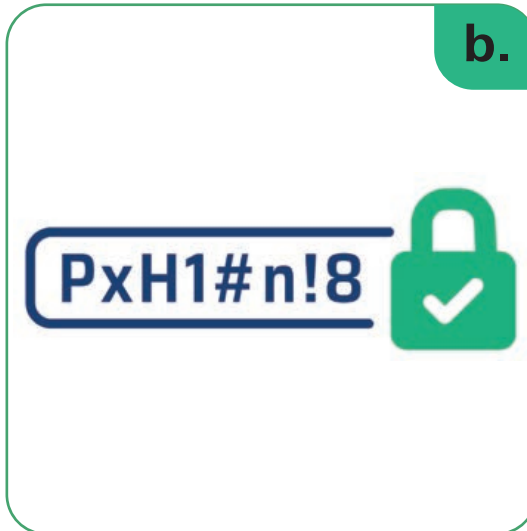
**Indlela yokuziphatha ephephile**

a.



Ngilinda imoto ihlehle ngaphambi kokuba ngidlale ibhola.

b.



Ngisebenzisa iphasiwedi eyimfihlo kakhulu exube izinhlamvu zamagama, izinombolo kanye nezimpawu.

### Indlela yokuziphatha engaphephile

3.



Ngisebenzisa iphasiwedi enezinombolo noma izinhlamvu zamagama kuphela.

### Indlela yokuziphatha ephephile

c.



Ngigibela ibhayisikili lami bese ngigade izimoto ezidlulayo. Ifoni yami isephaketheni lami.

4.



Ngigijima emuva kwemoto ehlehlayo ukuze ngithathe ibhola.

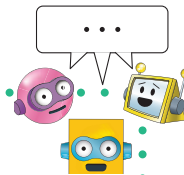
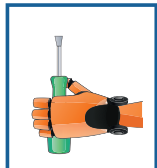
d.



Ngiyama bese ngibheke izimoto ngaphambi kokuwela umgwaqo. Ifoni yami isephakethini lami.

## Umsebenzi woku-1

Yenza isikhwama sosizo lokuqala



- I. Bheka izithombe. Khetha ngezinto okufanele zifakwe ngaphakathi kwesikhwama sosizo lokuqala.

Nakhu ozodidinga:

- Iphoyithi ikakhilbhodi eli-1 elibomvu elingama-A4.
- Ikhadi eli-1 elingu-A4 lokudweba izinto ezizongena esikhwameni sosizo lokuqala: uvolo, ibhandishi, umuthi wokugcoba, iziguduzi zezindlebe, amagilavu, njl.
- Isikelo
- Irula elingamasentimitha angu-30
- Ipensela namakhrayoni epensela
- Amapeni kayinki angamakhrayoni
- Iglu

## Umsebenzi wesi-1 (uyaqhubeka)

### Imininingwane

- I. Isikhwama sosizo lokuqala sephepha silinganiselwa ngosayizi wephepha elingu-A4, futhi liqukethe imininingwane ezinhlanu zosizo lokuqala.

### Imiyalelo



- Yenza imininingwane futhi wenza isikhwama sosizo lokuqala, usebenzisa iphepha lekhadibhodi elingu-A4.

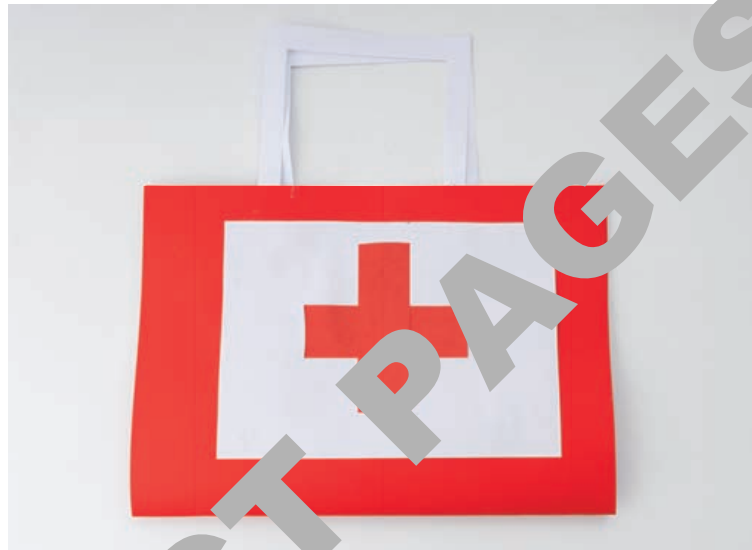
Sika uphawu lwesizifo lombano ephepheni elimhlophe bese ulunamathisele oningothini olungaphambili nolungemuva kwethasi.



- Landela imiyalelo. Isikhwama sinesivalo esingavuleka futhi sivaleke.
- Khetha futhi udwebe izinto zosizo lokuqala ezizongena esikhwameni sakho. Zipende bese uzisike.

## Umsebenzi woku-1 (uyaqhubeka)

Nasi isikhwama esiqediwe.



Hlola isikhwama sosizo lokuqala sakho. Dweba ubuso obunobusana nempendulo yakho.



Kuhle kakhulu



Kuhle



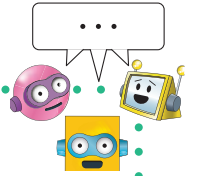
Kungaba ngcono

Sivaleke futhi savuleka kanjani isikhwama sami sosizo lokuqala?

Isikhwama sami sosizo lokuqala sakheke ngobunono kangakanani?

Ngisihlobise futhi ngasiqedela kahle kangakanani isikhwama sami sosizo lokuqala?

## Umsebenzi wesi-2



Kule khodi, uzocosha izinto futhi ugxume weqe izinto.  
Izithiyo okuzodlulwa kuzo yi-ambulensi



kanye neloli lezicishamlilo



Sebenzisa la mabhulokhi ekhodi.:

				
Phambili	Jikela kwesokunxelo	Jikela kwesokudla	Cosha (gxavuna)	Eqa

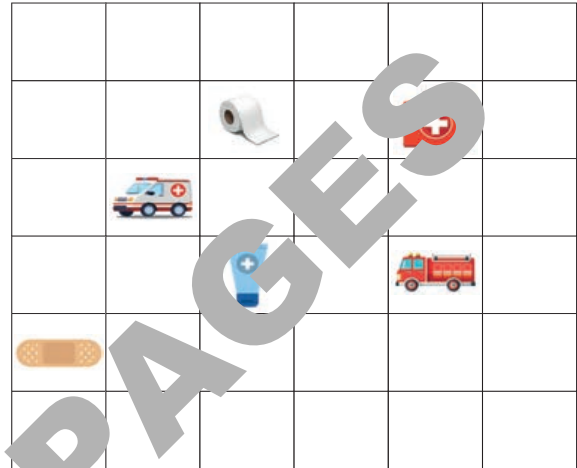


EXTRACT PAGES

## Umsebenzi wesi-2 (uyaqhubeka)

### Ikhodi yoku-1

- I. Bheka igridi.  
Fundu futhi  
ulandele ikhodi.  
Qala kunxantathu  
oluhlaza  
satshani ►.




Phambili, [phambili, cosha, phambili,

[phambili, jikela kwesokudla], eqa ,

[phambili, jikela kwesokudla], ,

[phambili, cosha , [phambili, jikela  
kwesokunxele], phambili, [phambili, cosha,

[phambili, jikela kwesokudla], eqangaphezulu

, phambili, [phambili, cosha ,

[phambili, jikela kwesokunxele], phambili

## Umsebenzi wesi-2 (uyaqhubeka)



2. Xoxa ngokulandelayo nophathini wakho:

b. Ugxuma weqeni?

c. Ume kuphi?

3. Bhala ikhodi.

4. Qhathanisa amakhodi amabili. Naeyiphi ikhodi emfishane?

5. Finyeza ikhodi.

a. Khetha umzila omfishane kakhulu.

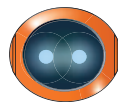
b. Finyeza umzimba omfishane usebenzisa izinkinobho zophindaphinda.

6. Bheka futhi ubhele ikhodi.

Ingabe ikhodi iyamaphutha?



Khetha, awekho  
amaphutha!



Yiphutha  
elilodwa noma  
amabili kuphela

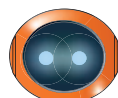


Yebo,  
amaphutha  
amaningana

Ingabe ikhodi iyayixazulula inkinga?



Kuhle kakhulu



Kuhle

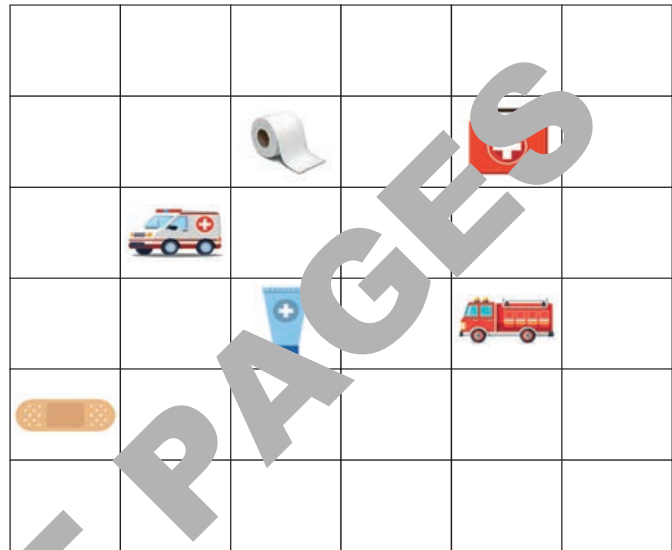



Kungaba ngcono

## Umsebenzi wesi-2 (uyaqhubeka)

### Ikhodi yesi-2

- I. Bheka igridi. Landela ikhodi. Qala kunxantathu oluhlaza satshani ►.



Phambili [phambili, cosha ], phambili, [phambili, jikela kwesokudla], eqangaphezulu

, [phambili, jikela kwesokudla],

, [phambili, eqangaphezulu 

], [jikela kwesokudla, phambili, cosha 

], [phambili, jikela kwesokudla], phambili,

[phambili, cosha ] [jikela kwesokudla,

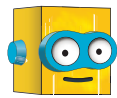
phambili], phambili, cosha .

## Umsebenzi wesi-2 (uyaqhubeka)



2. Xoxa ngokulandelayo nophathini wakho:
  - a. Ingabe ikhodi ilungile?
  - b. Ume kuphi?
3. Bhala ikhodi.

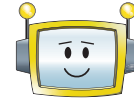
Emuva kokushintsha ikhodi, ingabe ikhodi ilungile inkinga?



Yebo, sikwazile!







Kudinga usizo  
ocane  
kuphela.



Kudinga usizo  
lokuba usivezele  
kuqala.

Uzizwa kanjani na-umsebenzi owenzile?

1 	2 	3 	4 
Ngiyabuleka!	Ngijabule!	Ngiyaziqhonya!	Yebo!

Ngazi kanjani uma ukudla kunempilo noma kungenayo impilo?



Ungamsiza uAmina akhethe ukudla okunempilo.

## Masiqale

Kunokudla okunempilo nokudla okungenayo impilo.

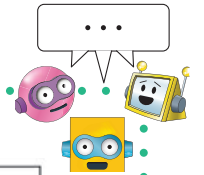
Buka izithombe. Unokuba ipuleti elinokudla okunempilo.

Hlukanisa ipuleti lokudla ngokwezinhlobo zokudla ezihlukene.

Bhalaphansi uhlu lokudla okwahlukene nokusepuletini lokudla okukhethayo.



## Umsebenzi woku-1



1. Bheka igridi. Njengeqembu, yakhani ikhodi ehambisana nokudla okunempilo.
2. Hlola ikhodi yenu.
3. Shintshanisanani ngekhodi yakho nelinye iqembu. Hlola futhi ulandele ikhodi yenu.
4. Buyisa ikhodi yakho. Finyeza ikhodi usebenzisa amakhodi okuphinda phinda.






**Ithiphu:**






Phinda amathokheni



Ingabe ikhodi amaphutha?

 U...wekho amaphutha!	 Yiphutha elilodwa noma amabili kuphela	 Yebo, amaphutha amaningana
---	---	---

Ingabe ikhodi iyayixazulula inkinga?

 Kuhle kakhulu	 Kuhle	 Kungaba ngcono
--	--	---

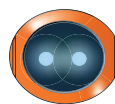
## Umsebenzi woku-1 (uyaqhubeka)

5. Lungisa inkinga uma kunesidingo.

Emuva kokushintsha ikhodi, ingabe ixazululekile inkinga?



Yebo, sikwazile!



Sidingo usizo oluncane ukusukela.



Kudingeke usizo lokuba usivezele kuqala.

**Hlukanisa** – Ukuqhekeka kubekho igxenye ezincane

**Thola iphutha** – Ukuthola nokungisa amaphutha

Igama elisha

## Umsebenzi wesi-2

1. Bheka igridi.
2. Ninophathini wakho, yakhani ikhodi kusukela ekuqaleni kuya ekugcineni. Kumele neqe amabhulokhi amabili aphuzi. Lawa ngamabhulokhi amagama athi 'uma'. Uma ungena ebhokisini elibhalwe ngokuphuzi, kumele uqonde ukudla okunempilo.

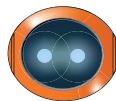


3. Bhala ikhodi.

Ingabe ikhodi namaphutha?



Cha, awekho amaphutha!



Yiphutha elilodwa noma amabili kuphela



Yebo, amaphutha amaningana

Ingabe ikhodi iyayixazulula inkinga?



Kuhle kakhulu



Kuhle



Kungaba ngcono

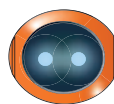
## Umsebenzi wesi-2 (uyaqhubeka)

4. Lungisa inkinga uma kunesidingo.

Emuva kokushintsha ikhodi, ingabe ixazululeki inkinga?



Yebo, sikwazile!



Sidinge usizo oluncane kunalula.



Sidingeke usizo lokuba usivezele kuqala.

5. Finyeza ikhodi.

6. Shintshanisani nabanye ophathini bese nihlole ikhodi yabo.

Uzizwa kanjani ngomsebenzi owenzile?

1		2		3		4	
Ngizazani!		Ngijabule!		Ngiyaziqhenya!		Yebo!	



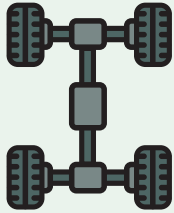
Ingabe uyakwazi ukwakha imoto ngezinto ezilahlwayo ezisetshenzisiweyo?

## Masakheni imoto

Nganombi kokwenza umklamo, kumele uhlele futhi wazise ukwaningo ngento ofuna ukuyakha.

Yini igaziyo ngemoto? Imoto inezingxenye ezihlukene.

1.



Lesi sisekelo sisekela imoto kanye nokubamba amasondo.

2.



Umzimba wemoto uthwala umshayeli nabagibeli futhi ubagcina bephephile.

3.



Amasondo enza uku- imoto ukuba iyakuse.

4.



Ama-eksili abamba amasondo.

Udinga izinto zokwakha ezithile ukuze wakhe imoto.

- Ungasebenzisi uku- ukhaka umzimba?
- Yini ongayisebenzisa ukuze wakhe amasondo?
- Ingabe amasondo angaphambili kanye nawo angemva azofana?
- I-eksili ungayakha ngani?

## Kule zizinto zokwakha yini ongayisebenzisa?

Ibhodlela lepulasitiki

Ibhokisi likamentshisi

Ithreyi lepolystyrene

Ibhokisi lomuthi yokuxubha

Isivalo spulasitiki esikhulu

Izivalo zepulasitiki ezisibaca

Izivalo zebhodlela eziwupulasitiki

Izivalo zepulasitiki ezihlukene

Induku yedowel encinyana

Ibhokisi lensipho

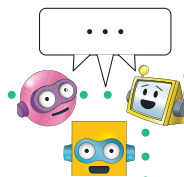
Izinti zokuvungula amazinyo

Iskewer sepulangwe.

Izistraw zepulasitiki zibamba inkxili



## Umsebenzi woku-1



### I. Nizosebenzisani ukwakha izingxenye ezihlukene zomzimba?

Upulasitiki, sitilo, thi lokuvungula, isivalo sikapulasitiki

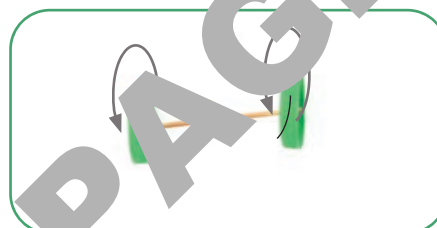


Kungenzeka ukuthi ninama-eksili anyakazayo.

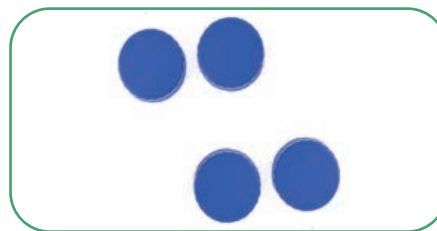


Zama mizimba ehlukene

Ama-eksili ajika kahle phakathi kwesibini ama-eksili. Jikeleza amasondo. Womabili amasondo anyakazayo. Amasondo afakwe iglu yalombeni nise ku-eksili.



Hlela ukujikeleza kwesonto.



Zama izinhlobo zama-eksili ezihlukene.

Igama elisha

**Imoto** – into ehambisa abantu isuka endaweni eyodwa iye kwenye.

**I-algorithm** – Isethi yemiyalelo

**Izingxenye** – izingcezu ezahlukeni ezihlangana ukuze kwakhiwe into ethile.

## Umsebenzi woku-1 (uyaqhubeka)

Bamba umzimba wemoto bese bamba isivalo eduze komzimba. Isikhungo esiphakathi esondweni kumele sibe seduze naphansi, hhayi empeleni phansi, ukuze i-eksili ilingane kahle.



Hlola ukuthi amasondo azoba makhulu ngokwanele umzimba.

Enza izimbobo ku-eksili yomzimba.

2. Uzozenza kanjani izimbobo emasondweni?



3. Ubani ozokwakha izingxenye ezihlukene?

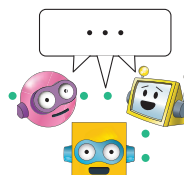
4. Iqembu lizoyihlanganisa kanjani imoto?

5. Bhala phansi zonke izinyathelo (i-algorithm) zokwakha imoto.

6. Fundela elinye iqembu izinyathelo. Ingabe imiyalelo ilandelwe ngokohlelo oluqondakalayo?






## Umsebenzi woku-1 (uyaqhubeka)



### 7. Akha imoto.




 Njalo	 Ngokuvamile	 Kungaba ngcono.
Eqenjini elilandelayo yiba nohlelo lwe-imbongi ukuze nakhe imoto?		
Xoxani nganoma wuluphi ushinyano okudingeka ukuba lwenziwe bese nithatha imoto njengeqembu?		
Ingabe iqembu lisebenzisa imathuluzi ngokuphephile?		
Ingabe indawo enisebenzela kuyo niyigcine ihlanzekile?		
Ingabe iqembu kubelana kahle ngezinsiza nempahla?		
Ingabe iqembu liyisebenzisa kahle impahla nganokudle kokumosha?		

### 8. Hlola imoto.




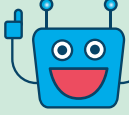
 Kuhle kakhulu	 Kuhle	 Kungaba ngcono
Ajikeleza kanjani amasondo?		
Imoto iqedwe ngobunono obunjani?		
Iye yaqonda kangakanani imoto ngenkathi yehla ngerempu?		

## Umsebenzi woku-1 (uyaqhubeka)

9. Iqembu lakho lisebenze kanjani ngokubambisana?

 Njalo	 Ngokuvamile	 Kunjababa ngcono
Ingabe ngiyenzile eyami ingxenye yomsebenzi? Ngibalalelile abanye?		
Iye yaqonda kangakanani imoto ingenkathi yehla ngerempu?		
Ingabe abanye bangabalalelile?		
Ingabe ngiyenze imisebenzi obekumele ngiyenze?		

Uzizwa kanjani ngomsebenzi owenzile?

<b>1</b> 	<b>2</b> 	<b>3</b> 	<b>4</b> 
Ngijabule!	Ngijabule!	Ngiyaziqhanya!	Yebo!