



MPHATO

3

PUKU YA
MOITHUTI

Platinum

Dikhoundu le Diroboto

Maskew Miller Learning
10 Freedom Way, Milnerton, Cape Town, 7441

© Maskew Miller Learning (Pty) Ltd 2022

Ditokelo tšohle di šireleditšwe. Ga go karolo ya phatlalatsšo ye, yeo e kago tšweletšwa, go bolokwa ka mokgwa wa go ntšha, goba go fetošwa ka mokgwa goba sebopego sefe goba sefe (elektroniki, semotšhene, go fotokopa, go gatišwa goba ka mokgwa wo mongwe) ntle le tumelelo ya go ngwalwa pele ya mong wa tokelo ya ngwalollo.

Go kgopela tumelelo ya go tšweletša lefsa goba go fetola karolo ye nngwe ya phatlalatsšo ye, o kgopelwa gore o ikopanye le ba lefapha la Ditokelo le Ditumelelo mo go 021 532 6000 goba romela e-meile go rightsgranting@mml.co.za. Go bega tshelo ya molao wa tokelo ya ngwalollo, re kgopela o romele imeile go copyright@mml.co.za

E gatišitšwe la 1 ka 2025

ISBN 978-1-834-95149-2
ePDF ISBN 978-1-834-99061-3

Mophatlalatsi: Whitley Makhari
Morulaganyimogolo: Georgia Mehl
Tihamo ya khabara ka MML Visual Design
Peakanyo ya puku ka MML Visual Design
Diswantšho ka AJ Erasmus, Angela Bowring, Ilana Dillon, LT Design Worx, Courtney Smith, Natalie Phillips, MML Visual Design
Tšweletšo ka Dorothea H Bester-Swanepoel, Straive, MML Visual Design
E gatišitšwe koro

Ditebogo

Bangwadi le mophatlalatsi ba leboga tšhomišo ya diswantšho go tšwa go:

Shutterstock

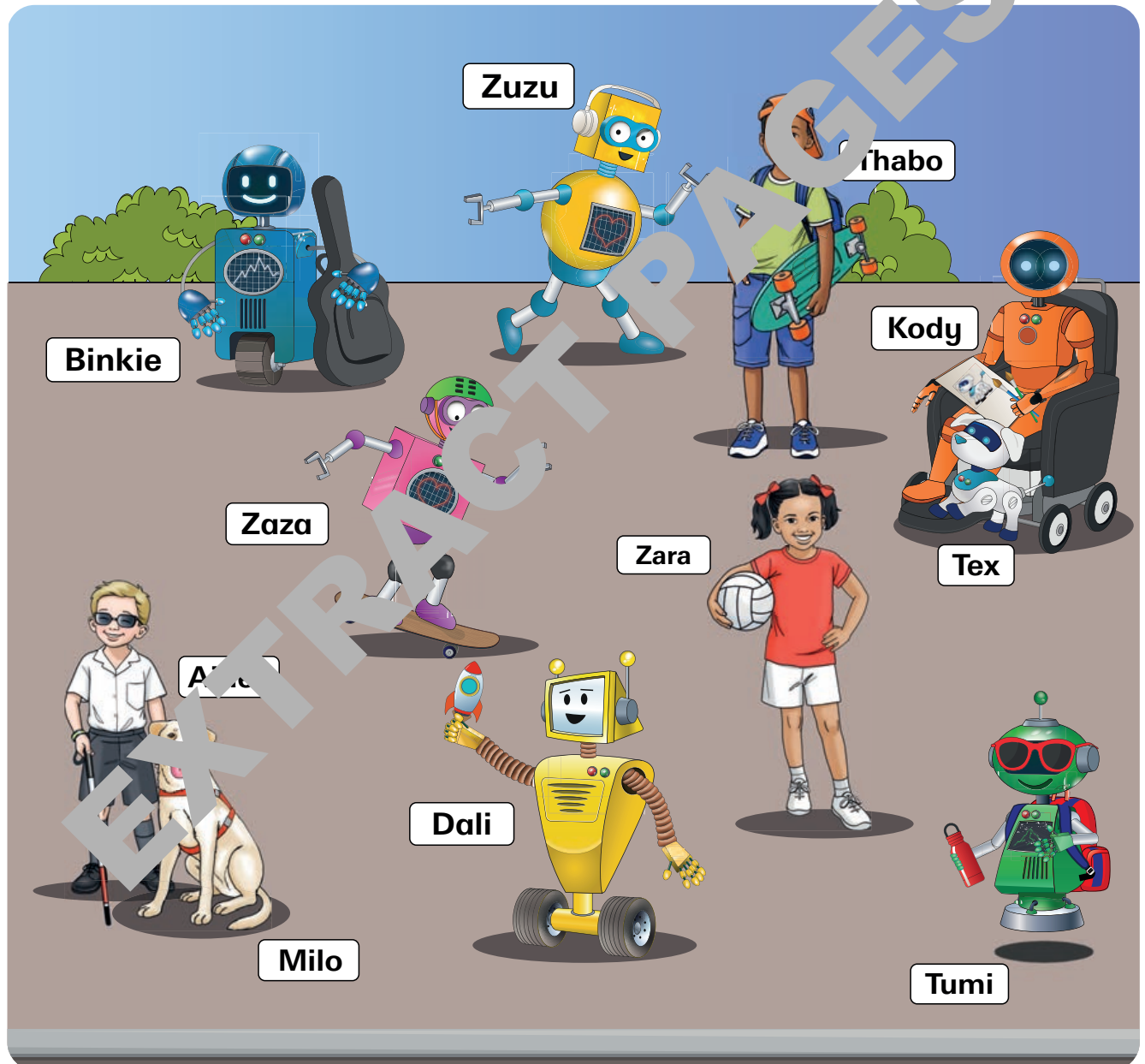
I. 3a, I. 4b, Nadia Cruzova; I. 3b, I. 4c, sagir; I. 3c, I. 4a, Borislav Bajkic; I. 3d, I. 4e, GloSlow; I. 3e, I. 4d, Meeza; I. 3f, Dmitri Disterheft; I.6a, I.126a, Engineer Studio; I.6b, Vershinin89; I.6c, I.126b, I.144a, AudriusBag; I. 7a, Paul Vasarhelyi; I. 7b, FUN FUN PHOTO; I. 7c, I. 144b, UlfsFotoart; I. 7d, perfectlab; I. 7e, es Sarawuth I. 7f, BOY ANTHONY; I. 8a, 19 STUDIO; I. 8b, I. 31a, rlat; I. 8c, I. 230b, officeku; I. 11a, I. 230c, nazarov Konstantin; I. 10b, I. 110d, Melnikov Dmitriy; I. 10c, I. 16d, I. 71f, I. 110a, I. 177a, PeopleImages; I. 11a, jd8f; I. 11b, I. 246d, AnnaStills; I. 11c, I. 43a, I. 43c, I. 248b, I. 249c, Ground Picture; I. 15a, I. 18a, Krakenimages, I. 15b, I. 18b, Riccardo Mayer; I. 15c, I. 18c Gelpi; I. 15d, I. 124a, I. 171a, I. 172a, I. 186, I. 187, I. 188, I. 189, I. 190, I. 191, I. 192, I. 193, I. 194, I. 195, I. 196, I. 197, I. 198, I. 199, I. 200, I. 201, I. 202, I. 203, I. 204, I. 205, I. 206, I. 207, I. 208, I. 209, I. 210, I. 211, I. 212, I. 213, I. 214, I. 215, I. 216, I. 217, I. 218, I. 219, I. 220, I. 221, I. 222, I. 223, I. 224, I. 225, I. 226, I. 227, I. 228, I. 229, I. 230, I. 231, I. 232, I. 233, I. 234, I. 235, I. 236, I. 237, I. 238, I. 239, I. 240, I. 241, I. 242, I. 243, I. 244, I. 245, I. 246, I. 247, I. 248, I. 249, I. 250, I. 251, I. 252, I. 253, I. 254, I. 255, I. 256, I. 257, I. 258, I. 259, I. 260, I. 261, I. 262, I. 263, I. 264, I. 265, I. 266, I. 267, I. 268, I. 269, I. 270, I. 271, I. 272, I. 273, I. 274, I. 275, I. 276, I. 277, I. 278, I. 279, I. 280, I. 281, I. 282, I. 283, I. 284, I. 285, I. 286, I. 287, I. 288, I. 289, I. 290, I. 291, I. 292, I. 293, I. 294, I. 295, I. 296, I. 297, I. 298, I. 299, I. 300, I. 301, I. 302, I. 303, I. 304, I. 305, I. 306, I. 307, I. 308, I. 309, I. 310, I. 311, I. 312, I. 313, I. 314, I. 315, I. 316, I. 317, I. 318, I. 319, I. 320, I. 321, I. 322, I. 323, I. 324, I. 325, I. 326, I. 327, I. 328, I. 329, I. 330, I. 331, I. 332, I. 333, I. 334, I. 335, I. 336, I. 337, I. 338, I. 339, I. 340, I. 341, I. 342, I. 343, I. 344, I. 345, I. 346, I. 347, I. 348, I. 349, I. 350, I. 351, I. 352, I. 353, I. 354, I. 355, I. 356, I. 357, I. 358, I. 359, I. 360, I. 361, I. 362, I. 363, I. 364, I. 365, I. 366, I. 367, I. 368, I. 369, I. 370, I. 371, I. 372, I. 373, I. 374, I. 375, I. 376, I. 377, I. 378, I. 379, I. 380, I. 381, I. 382, I. 383, I. 384, I. 385, I. 386, I. 387, I. 388, I. 389, I. 390, I. 391, I. 392, I. 393, I. 394, I. 395, I. 396, I. 397, I. 398, I. 399, I. 400, I. 401, I. 402, I. 403, I. 404, I. 405, I. 406, I. 407, I. 408, I. 409, I. 410, I. 411, I. 412, I. 413, I. 414, I. 415, I. 416, I. 417, I. 418, I. 419, I. 420, I. 421, I. 422, I. 423, I. 424, I. 425, I. 426, I. 427, I. 428, I. 429, I. 430, I. 431, I. 432, I. 433, I. 434, I. 435, I. 436, I. 437, I. 438, I. 439, I. 440, I. 441, I. 442, I. 443, I. 444, I. 445, I. 446, I. 447, I. 448, I. 449, I. 450, I. 451, I. 452, I. 453, I. 454, I. 455, I. 456, I. 457, I. 458, I. 459, I. 460, I. 461, I. 462, I. 463, I. 464, I. 465, I. 466, I. 467, I. 468, I. 469, I. 470, I. 471, I. 472, I. 473, I. 474, I. 475, I. 476, I. 477, I. 478, I. 479, I. 480, I. 481, I. 482, I. 483, I. 484, I. 485, I. 486, I. 487, I. 488, I. 489, I. 490, I. 491, I. 492, I. 493, I. 494, I. 495, I. 496, I. 497, I. 498, I. 499, I. 500, I. 501, I. 502, I. 503, I. 504, I. 505, I. 506, I. 507, I. 508, I. 509, I. 510, I. 511, I. 512, I. 513, I. 514, I. 515, I. 516, I. 517, I. 518, I. 519, I. 520, I. 521, I. 522, I. 523, I. 524, I. 525, I. 526, I. 527, I. 528, I. 529, I. 530, I. 531, I. 532, I. 533, I. 534, I. 535, I. 536, I. 537, I. 538, I. 539, I. 540, I. 541, I. 542, I. 543, I. 544, I. 545, I. 546, I. 547, I. 548, I. 549, I. 550, I. 551, I. 552, I. 553, I. 554, I. 555, I. 556, I. 557, I. 558, I. 559, I. 560, I. 561, I. 562, I. 563, I. 564, I. 565, I. 566, I. 567, I. 568, I. 569, I. 570, I. 571, I. 572, I. 573, I. 574, I. 575, I. 576, I. 577, I. 578, I. 579, I. 580, I. 581, I. 582, I. 583, I. 584, I. 585, I. 586, I. 587, I. 588, I. 589, I. 590, I. 591, I. 592, I. 593, I. 594, I. 595, I. 596, I. 597, I. 598, I. 599, I. 600, I. 601, I. 602, I. 603, I. 604, I. 605, I. 606, I. 607, I. 608, I. 609, I. 610, I. 611, I. 612, I. 613, I. 614, I. 615, I. 616, I. 617, I. 618, I. 619, I. 620, I. 621, I. 622, I. 623, I. 624, I. 625, I. 626, I. 627, I. 628, I. 629, I. 630, I. 631, I. 632, I. 633, I. 634, I. 635, I. 636, I. 637, I. 638, I. 639, I. 640, I. 641, I. 642, I. 643, I. 644, I. 645, I. 646, I. 647, I. 648, I. 649, I. 650, I. 651, I. 652, I. 653, I. 654, I. 655, I. 656, I. 657, I. 658, I. 659, I. 660, I. 661, I. 662, I. 663, I. 664, I. 665, I. 666, I. 667, I. 668, I. 669, I. 670, I. 671, I. 672, I. 673, I. 674, I. 675, I. 676, I. 677, I. 678, I. 679, I. 680, I. 681, I. 682, I. 683, I. 684, I. 685, I. 686, I. 687, I. 688, I. 689, I. 690, I. 691, I. 692, I. 693, I. 694, I. 695, I. 696, I. 697, I. 698, I. 699, I. 700, I. 701, I. 702, I. 703, I. 704, I. 705, I. 706, I. 707, I. 708, I. 709, I. 710, I. 711, I. 712, I. 713, I. 714, I. 715, I. 716, I. 717, I. 718, I. 719, I. 720, I. 721, I. 722, I. 723, I. 724, I. 725, I. 726, I. 727, I. 728, I. 729, I. 730, I. 731, I. 732, I. 733, I. 734, I. 735, I. 736, I. 737, I. 738, I. 739, I. 740, I. 741, I. 742, I. 743, I. 744, I. 745, I. 746, I. 747, I. 748, I. 749, I. 750, I. 751, I. 752, I. 753, I. 754, I. 755, I. 756, I. 757, I. 758, I. 759, I. 760, I. 761, I. 762, I. 763, I. 764, I. 765, I. 766, I. 767, I. 768, I. 769, I. 770, I. 771, I. 772, I. 773, I. 774, I. 775, I. 776, I. 777, I. 778, I. 779, I. 780, I. 781, I. 782, I. 783, I. 784, I. 785, I. 786, I. 787, I. 788, I. 789, I. 790, I. 791, I. 792, I. 793, I. 794, I. 795, I. 796, I. 797, I. 798, I. 799, I. 800, I. 801, I. 802, I. 803, I. 804, I. 805, I. 806, I. 807, I. 808, I. 809, I. 810, I. 811, I. 812, I. 813, I. 814, I. 815, I. 816, I. 817, I. 818, I. 819, I. 820, I. 821, I. 822, I. 823, I. 824, I. 825, I. 826, I. 827, I. 828, I. 829, I. 830, I. 831, I. 832, I. 833, I. 834, I. 835, I. 836, I. 837, I. 838, I. 839, I. 840, I. 841, I. 842, I. 843, I. 844, I. 845, I. 846, I. 847, I. 848, I. 849, I. 850, I. 851, I. 852, I. 853, I. 854, I. 855, I. 856, I. 857, I. 858, I. 859, I. 860, I. 861, I. 862, I. 863, I. 864, I. 865, I. 866, I. 867, I. 868, I. 869, I. 870, I. 871, I. 872, I. 873, I. 874, I. 875, I. 876, I. 877, I. 878, I. 879, I. 880, I. 881, I. 882, I. 883, I. 884, I. 885, I. 886, I. 887, I. 888, I. 889, I. 890, I. 891, I. 892, I. 893, I. 894, I. 895, I. 896, I. 897, I. 898, I. 899, I. 900, I. 901, I. 902, I. 903, I. 904, I. 905, I. 906, I. 907, I. 908, I. 909, I. 910, I. 911, I. 912, I. 913, I. 914, I. 915, I. 916, I. 917, I. 918, I. 919, I. 920, I. 921, I. 922, I. 923, I. 924, I. 925, I. 926, I. 927, I. 928, I. 929, I. 930, I. 931, I. 932, I. 933, I. 934, I. 935, I. 936, I. 937, I. 938, I. 939, I. 940, I. 941, I. 942, I. 943, I. 944, I. 945, I. 946, I. 947, I. 948, I. 949, I. 950, I. 951, I. 952, I. 953, I. 954, I. 955, I. 956, I. 957, I. 958, I. 959, I. 960, I. 961, I. 962, I. 963, I. 964, I. 965, I. 966, I. 967, I. 968, I. 969, I. 970, I. 971, I. 972, I. 973, I. 974, I. 975, I. 976, I. 977, I. 978, I. 979, I. 980, I. 981, I. 982, I. 983, I. 984, I. 985, I. 986, I. 987, I. 988, I. 989, I. 990, I. 991, I. 992, I. 993, I. 994, I. 995, I. 996, I. 997, I. 998, I. 999, I. 1000, I. 1001, I. 1002, I. 1003, I. 1004, I. 1005, I. 1006, I. 1007, I. 1008, I. 1009, I. 1010, I. 1011, I. 1012, I. 1013, I. 1014, I. 1015, I. 1016, I. 1017, I. 1018, I. 1019, I. 1020, I. 1021, I. 1022, I. 1023, I. 1024, I. 1025, I. 1026, I. 1027, I. 1028, I. 1029, I. 1030, I. 1031, I. 1032, I. 1033, I. 1034, I. 1035, I. 1036, I. 1037, I. 1038, I. 1039, I. 1040, I. 1041, I. 1042, I. 1043, I. 1044, I. 1045, I. 1046, I. 1047, I. 1048, I. 1049, I. 1050, I. 1051, I. 1052, I. 1053, I. 1054, I. 1055, I. 1056, I. 1057, I. 1058, I. 1059, I. 1060, I. 1061, I. 1062, I. 1063, I. 1064, I. 1065, I. 1066, I. 1067, I. 1068, I. 1069, I. 1070, I. 1071, I. 1072, I. 1073, I. 1074, I. 1075, I. 1076, I. 1077, I. 1078, I. 1079, I. 1080, I. 1081, I. 1082, I. 1083, I. 1084, I. 1085, I. 1086, I. 1087, I. 1088, I. 1089, I. 1090, I. 1091, I. 1092, I. 1093, I. 1094, I. 1095, I. 1096, I. 1097, I. 1098, I. 1099, I. 1100, I. 1101, I. 1102, I. 1103, I. 1104, I. 1105, I. 1106, I. 1107, I. 1108, I. 1109, I. 1110, I. 1111, I. 1112, I. 1113, I. 1114, I. 1115, I. 1116, I. 1117, I. 1118, I. 1119, I. 1120, I. 1121, I. 1122, I. 1123, I. 1124, I. 1125, I. 1126, I. 1127, I. 1128, I. 1129, I. 1130, I. 1131, I. 1132, I. 1133, I. 1134, I. 1135, I. 1136, I. 1137, I. 1138, I. 1139, I. 1140, I. 1141, I. 1142, I. 1143, I. 1144, I. 1145, I. 1146, I. 1147, I. 1148, I. 1149, I. 1150, I. 1151, I. 1152, I. 1153, I. 1154, I. 1155, I. 1156, I. 1157, I. 1158, I. 1159, I. 1160, I. 1161, I. 1162, I. 1163, I. 1164, I. 1165, I. 1166, I. 1167, I. 1168, I. 1169, I. 1170, I. 1171, I. 1172, I. 1173, I. 1174, I. 1175, I. 1176, I. 1177, I. 1178, I. 1179, I. 1180, I. 1181, I. 1182, I. 1183, I. 1184, I. 1185, I. 1186, I. 1187, I. 1188, I. 1189, I. 1190, I. 1191, I. 1192, I. 1193, I. 1194, I. 1195, I. 1196, I. 1197, I. 1198, I. 1199, I. 1200, I. 1201, I. 1202, I. 1203, I. 1204, I. 1205, I. 1206, I. 1207, I. 1208, I. 1209, I. 1210, I. 1211, I. 1212, I. 1213, I. 1214, I. 1215, I. 1216, I. 1217, I. 1218, I. 1219, I. 1220, I. 1221, I. 1222, I. 1223, I. 1224, I. 1225, I. 1226, I. 1227, I. 1228, I. 1229, I. 1230, I. 1231, I. 1232, I. 1233, I. 1234, I. 1235, I. 1236, I. 1237, I. 1238, I. 1239, I. 1240, I. 1241, I. 1242, I. 1243, I. 1244, I. 1245, I. 1246, I. 1247, I. 1248, I. 1249, I. 1250, I. 1251, I. 1252, I. 1253, I. 1254, I. 1255, I. 1256, I. 1257, I. 1258, I. 1259, I. 1260, I. 1261, I. 1262, I. 1263, I. 1264, I. 1265, I. 1266, I. 1267, I. 1268, I. 1269, I. 1270, I. 1271, I. 1272, I. 1273, I. 1274, I. 1275, I. 1276, I. 1277, I. 1278, I. 1279, I. 1280, I. 1281, I. 1282, I. 1283, I. 1284, I. 1285, I. 1286, I. 1287, I. 1288, I. 1289, I. 1290, I. 1291, I. 1292, I. 1293, I. 1294, I. 1295, I. 1296, I. 1297, I. 1298, I. 1299, I. 1300, I. 1301, I. 1302, I. 1303, I. 1304, I. 1305, I. 1306, I. 1307, I. 1308, I. 1309, I. 1310, I. 1311, I. 1312, I. 1313, I. 1314, I. 1315, I. 1316, I. 1317, I. 1318, I. 1319, I. 1320, I. 1321, I. 1322, I. 1323, I. 1324, I. 1325, I. 1326, I. 1327, I. 1328, I. 1329, I. 1330, I. 1331, I. 1332, I. 1333, I. 1334, I. 1335, I. 1336, I. 1337, I. 1338, I. 1339, I. 1340, I. 1341, I. 1342, I. 1343, I. 1344, I. 1345, I. 1346, I. 1347, I. 1348, I. 1349, I. 1350, I. 1351, I. 1352, I. 1353, I. 1354, I. 1355, I. 1356, I. 1357, I. 1358, I. 1359, I. 1360, I. 1361, I. 1362, I. 1363, I. 1364, I. 1365, I. 1366, I. 1367, I. 1368, I. 1369, I. 1370, I. 1371, I. 1372, I. 1373, I. 1374, I. 1375, I. 1376, I. 1377, I. 1378, I. 1379, I. 1380, I. 1381, I. 1382, I. 1383, I. 1384, I. 1385, I. 1386, I. 1387, I. 1388, I. 1389, I. 1390, I. 1391, I. 1392, I. 1393, I. 1394, I. 1395, I. 1396, I. 1397, I. 1398, I. 1399, I. 1400, I. 1401, I. 1402, I. 1403, I. 1404, I. 1405, I. 1406, I. 1407, I. 1408, I. 1409, I. 1410, I. 1411, I. 1412, I. 1413, I. 1414, I. 1415, I. 1416, I. 1417, I. 1418, I. 1419, I. 1420, I. 1421, I. 1422, I. 1423, I. 1424, I. 1425, I. 1426, I. 1427, I. 1428, I. 1429, I. 1430, I. 1431, I. 1432, I. 1433, I. 1434, I. 1435, I. 1436, I. 1437, I. 1438, I. 1439, I. 1440, I. 1441, I. 1442, I. 1443, I. 1444, I. 1445, I. 1446, I. 1447, I. 1448, I. 1449, I. 1450, I. 1451, I. 1452, I. 1453, I. 1454, I. 1455, I. 1456, I. 1457, I. 1458, I. 1459, I. 1460, I. 1461, I. 1462, I. 1463, I. 1464, I. 1465, I. 1466, I. 1467, I. 1468, I. 1469, I. 1470, I. 1471, I. 1472, I. 1473, I. 1474, I. 1475, I. 1476, I. 1477, I. 1478, I. 1479, I. 1480, I. 1481, I. 1482, I. 1483, I. 1484, I. 1485, I. 1486, I. 1487, I. 1488, I. 1489, I. 1490, I. 1491, I. 1492, I. 1493, I. 1494, I. 1495, I. 1496, I. 1497, I. 1498, I. 1499, I. 1500, I. 1501, I. 1502, I. 1503, I. 1504, I. 1505, I. 1506, I. 1507, I. 1508, I. 1509, I. 1510, I. 1511, I. 1512, I. 1513, I. 1514, I. 1515, I. 1516, I. 1517, I. 1518, I. 1519, I. 1520, I. 1521, I. 1522, I. 1523, I. 1524, I. 1525, I. 1526, I. 1527, I. 1528, I. 1529, I. 1530, I. 1531, I. 1532, I. 1533, I. 1534, I. 1535, I. 1536, I. 1537, I. 1538, I. 1539, I. 1540, I. 1541, I. 1542, I. 1543, I. 1544, I. 1545, I. 1546, I. 1547, I. 1548, I. 1549, I. 1550, I. 1551, I. 1552, I. 1553, I. 1554, I. 1555, I. 1556, I. 1557, I. 1558, I. 1559, I. 1560, I. 1561, I. 1562, I. 1563, I. 1564, I. 1565, I. 1566, I. 1567, I. 1568, I. 1569, I. 1570, I. 1571, I. 1572, I. 1573, I. 1574, I. 1575, I. 1576, I. 1577, I. 1578, I. 1579, I. 1580, I. 1581, I. 1582, I. 1583, I. 1584, I. 1585, I. 1586, I. 1587, I. 1588, I. 1589, I. 1590, I. 1591, I. 1592, I. 1593, I. 1594, I. 1595, I. 1596, I. 1597, I. 1598, I. 1599, I. 1600, I. 1601, I. 1602, I. 1603, I. 1604, I. 1605, I. 1606, I. 1607, I. 1608, I. 1609, I. 1610, I. 1611, I. 1612, I. 1613, I. 1614, I. 1615, I. 1616, I. 1617, I. 1618, I. 1619, I. 1620, I. 1621, I. 1622, I. 1623, I. 1624, I. 1625, I. 1626, I. 1627, I. 1628, I. 1629, I. 1630, I. 1631, I. 1632, I. 1633, I. 1634, I. 1635, I. 1636, I. 1637, I. 1638, I. 1639, I. 1640, I. 1641, I. 1642, I. 1643, I. 1644, I. 1645, I. 1646, I. 1647, I. 1648, I. 1649, I. 1650, I. 1651, I. 1652, I. 1653, I. 1654, I. 1655, I. 1656, I. 1657, I. 1658, I. 1659, I. 1660, I. 1661, I. 1662, I. 1663, I. 1664, I. 1665,

Le amogetšwe

Go ithuta

Moithuti yo a rategago,

O amogetšwe mo go puku ye ya go thabiša ya kgakollo! O tla kopana le dikokwane tša go makatša; go swana le gore kokwane ye nngwe le ye nngwe e kgethegile, le wena o kgethegile!



Itokišetše go ithuta, go raloka le go hlama o na le bagwera ba gago. Ithute ka go ipshina.

Tsela ya go šomiša pukuntšu ye

Ge o bona	Go ra gore:
	nako ya go šoma le mogwera
	nako ya go šoma ka sehlopha
	nako ya go šomiša diatla le bjoko bja
	nako ya go thala le go ngwala
	nako ya go lala a ga dilo
	nako ya go šomiša mabjoko a ka le bopolelo
	nako ya go khouta
	nako ya go sepetša mmele wa ka
	nako ya go abelana

Go kwešiša kgopolo ya tlhahlo

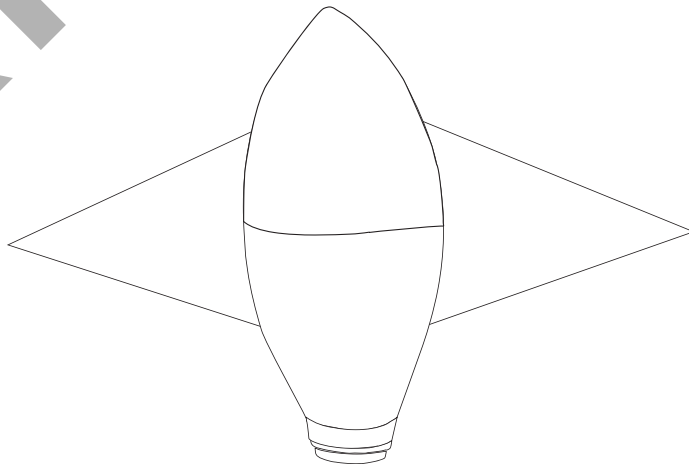
Dira rokhete:

O tla nyaka:

- Dipatlana tše 4 (e ka ba dipatlana tša go hupa tše di pentilwego, mathontswana, khathete goba pampiri ya mebala yeo e segilwego ka diripa. Šomiša eng goba eng yeo e lego bonolo o tšona ebile e hwetšagala gabonolo.
 - Ye I ye khubedu
 - Ye I ya mmala wa namune
 - Ye I ya talalerata
 - Ye I ye serolwane
- Sekgomaretši.

Go dira rokhete ya gago:

- Thala methalo go dikologa rokhete
- Ripa mo o thadilego methalo go dikologa rokhete
- Lokela rokhete ya gago mebala
 - Ka godimo – khubedu
 - Ka tlase – talalerata
 - Ka go la ngele – mmala wa namune
 - Ka go la go ipele – serolwane
- Kgomaretša re tšona go godimo ga seripa sa khatebote



Kotara ya 1



Ke tšea tsela efe.....	1
Ke tšohle ka nna	7
A re thale.....	11
Naa maikutlo ke eng?.....	16
Lepokisana la ka la thušo ya pele.....	21
Dikgetho tša maphelo a mabotse	32
A re ageng sefatanaga.....	37
Mohlala wa leoto la ka la titšithale.....	44
Ditokelo tša gago le ditokelo tša	51
Ke dira eng go laetša maikarabelo	58

Kotara ya 2



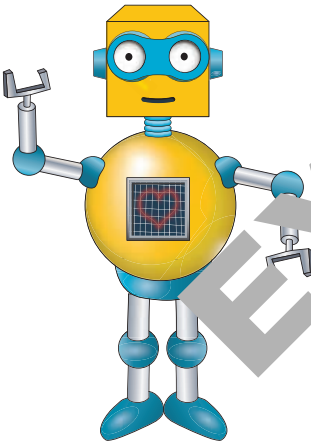
Eja dikhapohaetse tša go lokela maphelo.....	60
Ke swanetše go kge.....	65
Diproteine le	68
Dikhu.....	74
.....	79
Naa bothata ke eng?	84
.....	89
Maboyo a maphelo	97
Rarolla bothata bja tšhilafatšo.....	106
Fokotša, diriša gape, šomiša leswa	114

Kotara ya 3



Batho ba go re thuša	120
Go gatiša Dipatrone.....	127
Go lwantšha tšhilafatšo	137
Go dira sekotlela sa matšhe ya pampiri	144
Go khouta ka Poreile	151
Go kgabiša mogopo wa gago.....	157
Ka fao theknolotši e fetogilego.....	167
Diroboto ka sebaka.....	173
Lafaufaung la ka ntle.....	179
Re nyakana le letlakala le letšatsi.....	185

Kotara ya 4

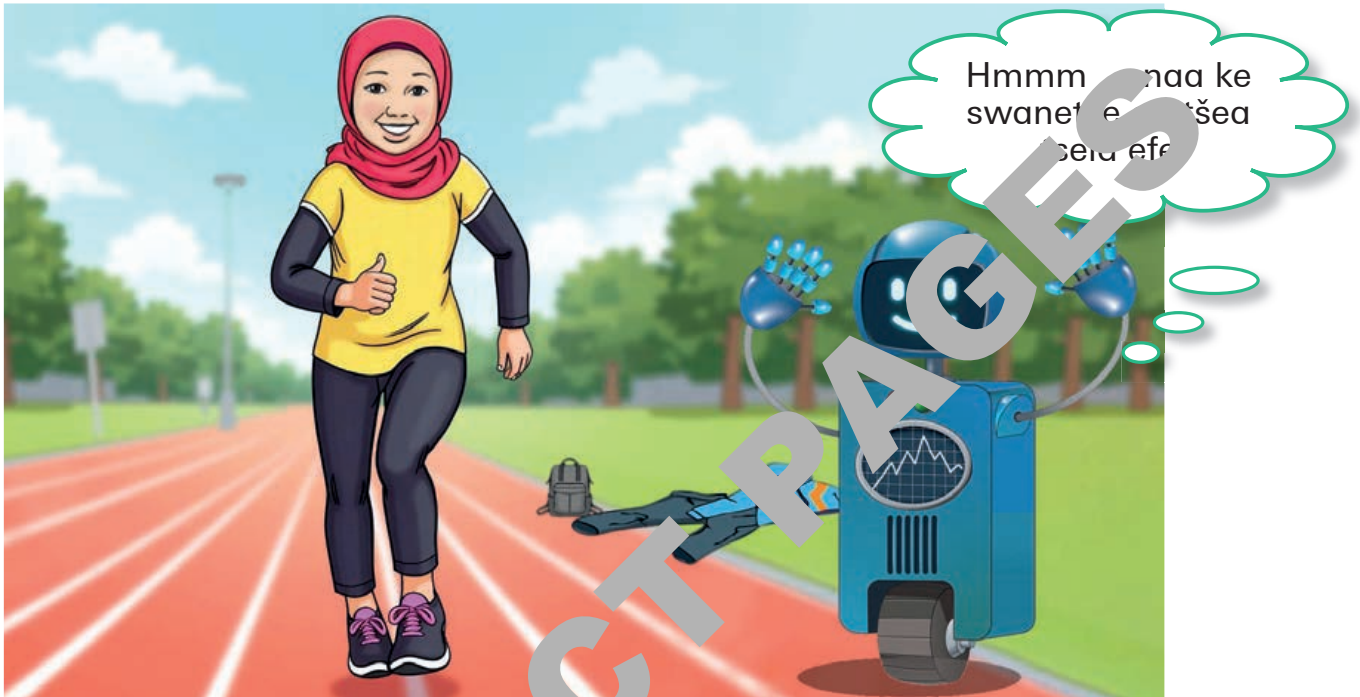


Ditšweletšwa le tšheretšo.....	196
Diroboto Mašengweng.....	206
Diroboto di tšhiloša	215
Feleletšano ya gago	221
Go fenyedimo	227
Go tšhama maemo a boso	232
Khoutu - leleme la renu lephihli.....	238
Theknolotši yeo e re thušago.....	245
Diphoofolo tša dire thušago.....	251
Ditšie tše šomago kudu.....	259

EXTRACT PAGES

Ke Letšatši la Dipapadi Sekolong.

Re tšea dipheho ka dinako ka moka. Naa o tšea bjang dipheho?



A re thome eng

Naa ye e pat.

Ka fao, tatelano ke eng bjale?



Ee, lebelela matšoba a go **ipušetša**. Patrone ke sete ya go bušetšwa ya ditatelano.

Tatelano ke sete ya **dikarolo** goba dilo. Ge di bušetšwa, di hlama patrone.

go ipušeletša - ge selo se direga gape le gape

dielemente - elemente ke selo sefe goba sefe seo se ka hwetšagalano go tatelano.

EXTRACT PAGES

Mošongwana wa 1



Kiriti ya I

1. Thuša Aamina go hwetša diaparo tša gagwe. Lebelela kriti.
 - a. Hwetša diaparo tša dipapadi.
 - b. Hwetša diaparo tša gae.



2. Hlala khoutu ya go ya go borokgo bjo bokopana bjo bo khubedu.
 - Khoutu swanetše go thoma go mosebe wa go thoma.
 - Efoya mapheko tseleng ya gago ka go a taboga ka go godimo.



Pele			
Retologela ka go la nngole		Retologela ka go la go ja	
Taboga ka godimo		Bušetša	② ③ ④ ⑤

3. Ngwala khoutu gomme o e leke.
4. Kgotla leloko la sehlopha go e lekola.

Mošongwana wa 1 (o tšwela pele)



Kiriti ya 2

1. Lebelela kriti.



a. Hwetša diaparo tsa dipapadi.

b. Hwetša dipapadi tša gae.

2. Hlama khutlwa ga dipapadi, gomme e felele go lefelo la go tšwela kgoboketša diaparo tša.

• Kgoboketša e swanetše go thoma go mosebo wa go tšwela ema.

• Kgoboketša bonnyane dilo tše tharo.



Pele				
Retologela ka go la ngele		Retologela ka go la go ja		
Fetela godimo		Bušeletša		

Mošongwana wa 2 (o tšwela pele)

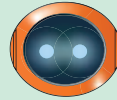


3. Ngwala khoutu gomme o e leke. Kgetha aekhone ya go tswalana le yona go araba potšišo

E ka ba khoutu e na le dipošo?



Ee, dipošo tše mmalwa



Phošo ye tee go... owa, ga e tše pedi fela... na dipošo!

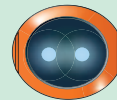


4. Fanang le sehlopha se sengwe gomme le diriše khoutu ya bona.

Naa khoutu e rarolotše bathata?



Go ka ba...







Gabotse



Gabotse kudu

O ikwa bjang ka Mošongwana wa wo o o dirilego??

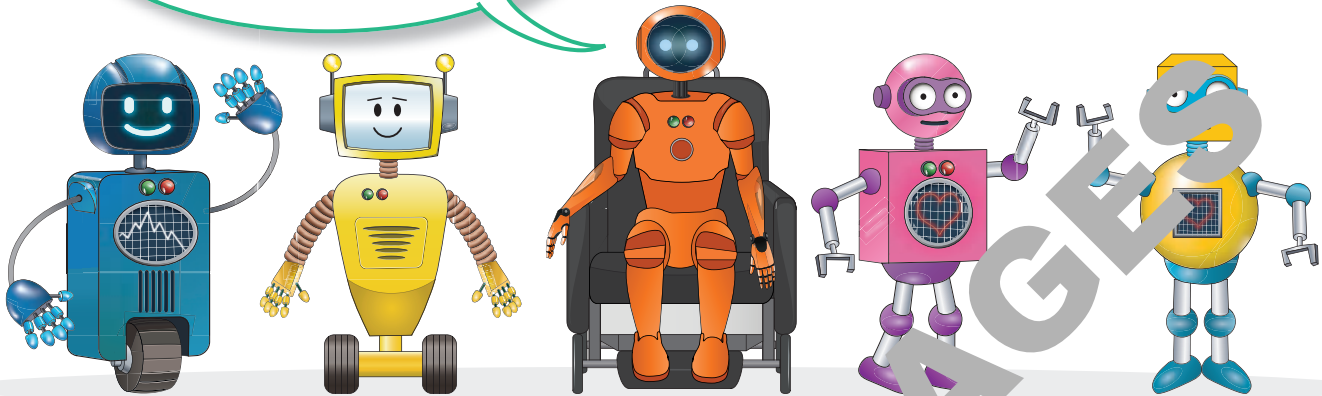
1 	2 	3 	4 
Thabile!	Thabile!	Ikgantšha!	Yay!

Programo – lenaneo la ditaelo tša go botša khomphutha, roboto goba sebakadišwa gore se dire eng.

Khomphutha – motšhene wa go go thuša go dira dilo tše ntši, go swana le go bolela le batho ba bangwe, go bapala dipapadi le go hwetša tshedimošo.

Mantšu a Maswa

ke nyaka go le tseba bokaone. Yo mongwe le yo mongwe a ka mpotša ka yena?

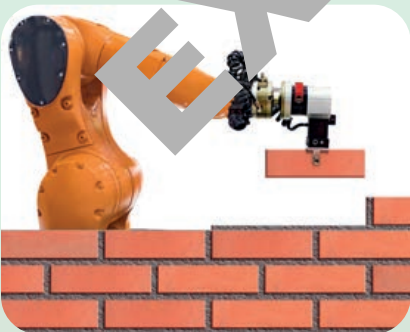


Naa o tseba tshedimošo yeo go bologelego a abelana ka yona, le yeo go sego gwa bologeга?

A re thomengn

Roboto ke motšhene. **o diraganywa** ke batho ka tirišo ya **khomphutha**.

Roboto e **la** ka diragano. E **thuša** batho go dira mešomo.



Mošongwana wa 1



Bolelang ka seo diroboto tše di se dirago.



a.

Roboto ya letsogo la go kgoboketša ditlakala



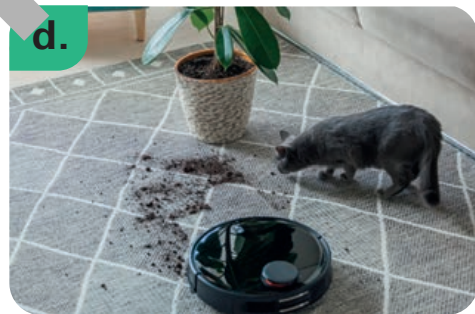
b.

Roboto ya faporiking



c.

Roboto go kota bjang



d.

Roboto ya go hlwekiša ka motšhene wa go tloša lerole/ ditšhila



e.

Teroune



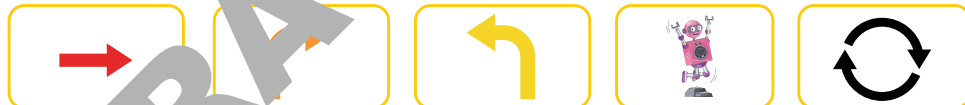
f.

Go ithuta ka AI

Mošongwana wa 2



Kody o nyaka go ithuta tše ntši ka wena. O swanetše go ba bohlae. Ge potšišo e nyaka tshedimošo ye bohlokwa ka wena, o swanetše go re, “Aowa, nka se go lona yeo, yeo ke tshedimošo ye bohlokwa ya motho.”



O na mesebe e 13:

- ye 2 ya ditaelo tša 'retologela ka go la ngele'
- ye 9 ya ditaelo tša 'pele'
- ye 2 ya ditaelo tša 'retologela ka go la go ja'.





Gape o na le: 1 'tše dintši ka mo o ka kgonago go topa' 2. dithokene tša 'boeletša'.



Mošongwana wa 2 (o tšwela pele)

1. Ngwala khoutu. Diriša dikarata tša go khoutu.
2. Khoutu e swanetše go kgoboketša dikarata tše pedi tše serolwane le ye tee ye hubedu.
3. Lekola khoutu ya gago.
4. Fanang dikhoutu le mogwera wa gago.
5. Latela khoutu ya motho yoo. Bala dipotšišo ga fao khoutu e felelago gona gomme o tšarape.
6. Tšwela pele mola maloko a nna mme a sehlopha a theeditše dipotšišo le dikarata. E re le bona ba lekole khoutu.
7. Sehlopha ka moka se a šierana go fihlela dikhoutu ka moka di lekilwe go balwa.

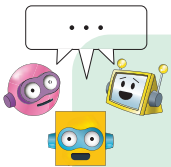
O ikwa bjano ka Mošongwana wo o o dirilego?

1 	2 	3 	4 
Go Leka!	Thabile!	Ikgantšha!	Yay!



Ao hle! Re ka di thala gape?

Naa o rata go thala eng?



A re thomengng

Theknolotši e direšwa go tšhama batho le go hlabbolla tsela ya bona ya go phelisa le kgetša theknolotši mafelong a mantši.



Magaeng a rena



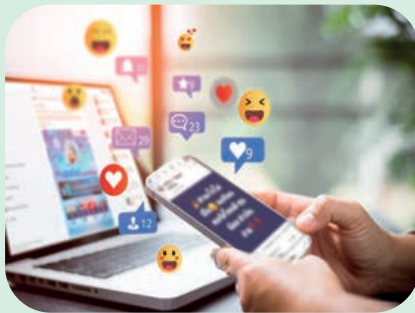
Dipolaseng



Ge re tšea maeto

A re thomengng

Sedirišwa sa go šomiša khomphutha se šoma ka tshedimošo ya titšithale go re thuša go dira mešomo ya rena.



Ka dikgokagano tša titšithale



Mošongwanang



Go kgokaganya batho go ralala le lefase

EXTRACT PAPERS



Tshedimošo ya titšithale – Dikhoutu tša sephiri tša go dirwa ka dinomoro tšeo dikhomphutha di di šomišago go bontšha diswantšho, mantšu, le dibidio.

Mokhoutu – Motho yo a botšago khomphutha seo e swanetšego go se dira

Mošongwana wa 1

Phetha gore **mokhouti** ke mang le gore roboto ke mang.

Mokhouti o bala khoutu.

Roboto e a theeletša gomme ya thala godimo ga kritšho go se be le selo.

‘Pene godimo’ e ra go re tlogela poloko e se ya tšwa.

‘Pene fase’ e ra go khalara ploko.

Latela ditaelo.

Mothaladi wa ka godimo: ga go na seswantšho

Mothaladi wa 2: : FPU F FPD FPU F D F F

Mothaladi wo mofsa wa go ya fase: FPU F F FPD

Mothaladi wo mofsa wa go ya fase: FPU FPD FPU F F FPD FPU

Mothaladi wo mofsa wa go ya fase: FPU F FPD F F FPU F F

Mothaladi wa ka fase: ga go na seswantšho

▶								
▶			■		■			
▶			■					
▶		■				■		
▶			■	■	■			

✎ ✎ ✎ ✎ ✎ ✎ ✎ ✎

→ → → → → → → →

✎ ✎ ✎ ✎ ✎ ✎ ✎ ✎

→ → → → → → → →

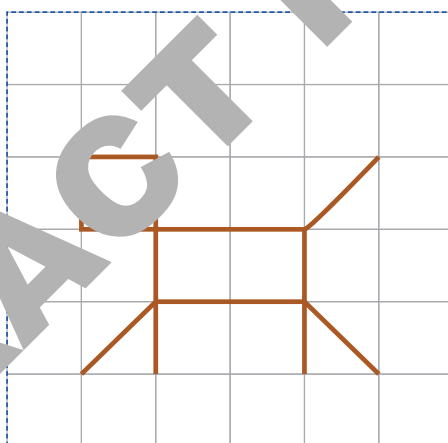
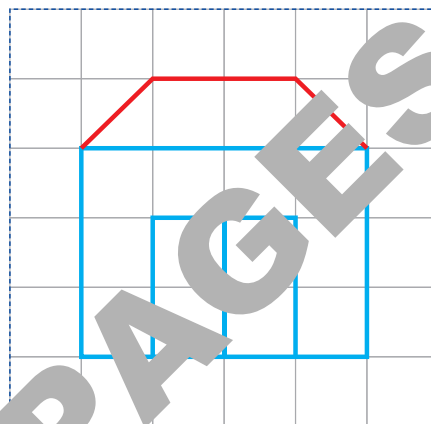
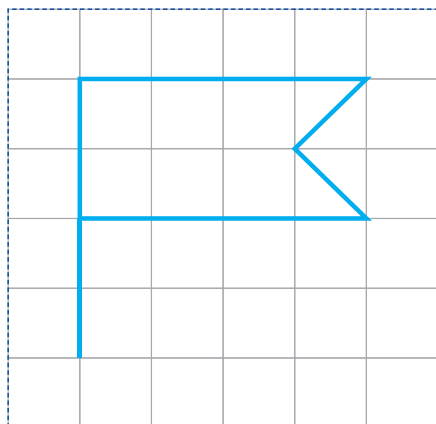
✎ ✎ ✎ ✎ ✎ ✎ ✎ ✎

→ → → → → → → →





Fetolelanang maikarabelo le mogwera wa gago gomme le dire Mošongwana gape.

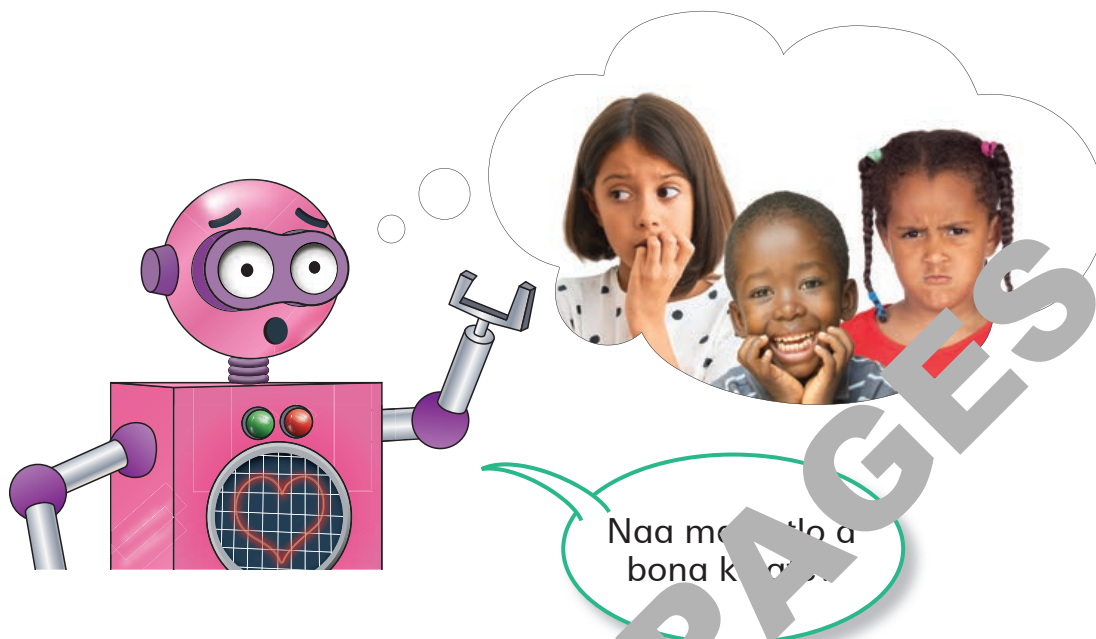
Mošongwana wa 2 (o tšwela pele)

2. Kopolla diswantšho tše godimo ga dikriti.



O ikwa bini g ka Mošongwana wo o o dirilego?

<p>1</p> 	<p>2</p> 	<p>3</p> 	<p>4</p> 
<p>Go Leka</p>	<p>Thabile!</p>	<p>Ikgantšha!</p>	<p>Yay!</p>



Naa o ka tseba bjang gore motho o ikwa bjang?

A re thomengwa

Theknolotši ya tšeo eheimošo (IT) e ka didirišwa tšeo re di šomišago go šoma ka eheimošo, bjalo ka mantšu, dinomoro, diswantšho le medumo.



Dinomoro



Diswantšho



Medumo

Khomphutha e gopola tshedimošo.
Ena le memori.



E boloka le go lota mehuta ya go fapafapana go tshedimošo
gore e tle e kgone go e šomiša lebakeng le tlogo.



Dingwalwa tša a tšaba Mošongwana wa gae Dibidio tša inthaneteng

Khomphutha e **sepetša** tshedimošo. E ka rarolla mathata a
komoro.

Mantšu a
mafisa

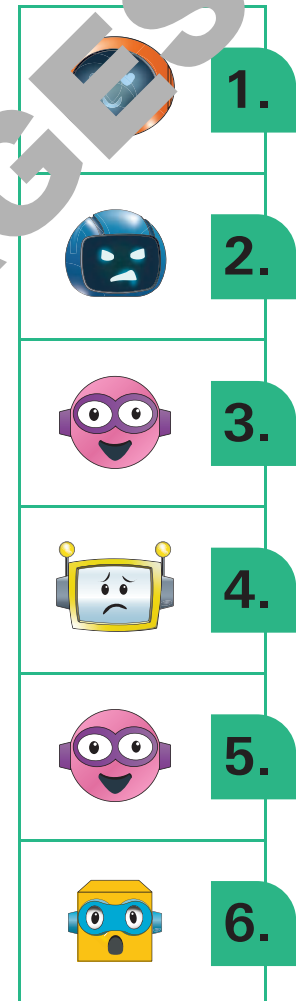
Memori – Lefelo la mohola moo tshedimošo ka moka ya bohlokwa e
hwetšagalago gore khomphutha e kgone go e hwetša gape.

Tshepetšo – Tshepetšo e swana le resipi yeo e go bontšhago ka moo o
ka dirago selo.

Mošongwana wa 1



Lebelela seswantšho gomme o kgethe aekhone ye e amanago le sona.



Mošongwana wa 2



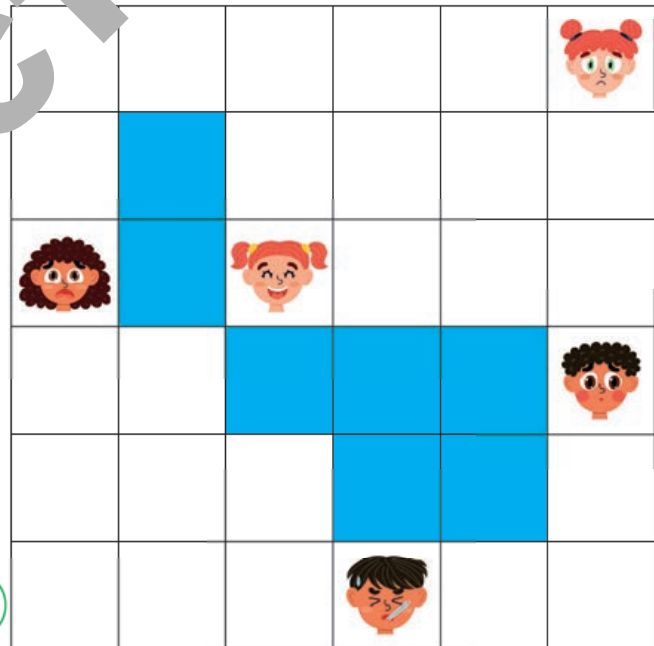
Tšatši le lengwe le le
lengwe re ba le maikutlo a
go fapafapana.




1. Thoma mathomong
a mosebe wa pele.

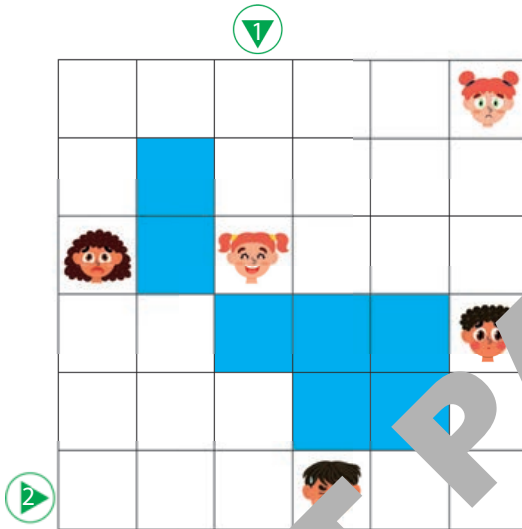


- Ngwala khoutu
go kgoboka ya
maikutlo ka
moka a tšahano
godinaga kriti.
- Lekola
khoutu.
- Phošolla, ge go
mokega.
- Lekola khoutu
ya sehlopha se
sengwe.



Mošongwana wa 2 (o tšwela pele)





2. Thoma mathomong a mosebe wa bobedi. 



- Ngwala khoutu go kgoboketša maikutlo ka moka a mahleho go dimo ga kriti.
 - Lela khoutu.
 - Phofoa ge go hlokega.
- Kopana tsela ya gago ya mmamoratwa.
 - Khutlofatša khoutu ya tsela ya kgetho ya gago.



O ikwa hlangwa Mošongwana wo o o dirilego??

1 	2 	3 	4 
Go Leka!	Thabile!	Ikgantšha!	Yay!



Ka dinako tše dingwe re ba le dikotsi ra hloka le pokisana la thušo ya pele.

A re thomang

Dikotsi tsa dingwe. O swanetše go hlokomela gore o bolokege ka faseng la nnete le inthaneteng.

Bonang ka maitshwaro a go bolokega le ao a sa bolokegago mo diswantšhong.

2. Maitshwaro a mohuta wo a ama bjang maphelo a rena le polokego ya rena?
3. Amantšha maitshwaro a mangwe le a mangwe a go se bolokege le maitshwaro a go bolokega. Ngwala fela nomoro le tlhaka?



Maitshwaro a go se bolokege



Ke otlela paesekela ya ka ke le gare ke bolela ka sellatheleng.

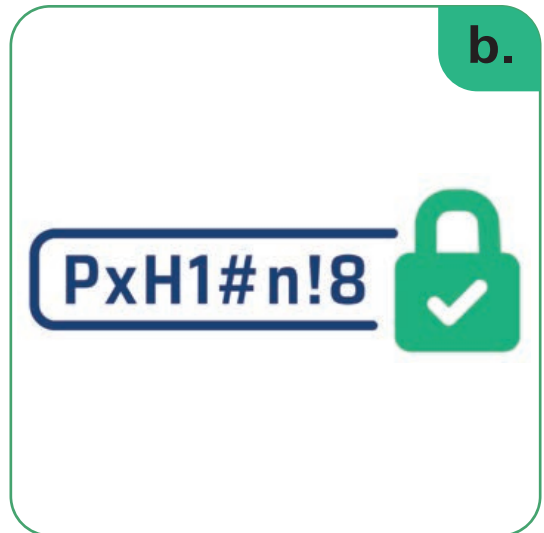


Ke tshela mmila ke le gare ke **romela** melaetša ka sellathekeng sa ka.

Maitshwaro a go bolokega



Ke emela sefatanaga go fetela morago pele ke tšea kgwele.



Ke šomiša nomoro ye maatla ya sephiri ya kopantšho ya ditlhaka, dinomoro le maswao.

Maitshwaro a go se bolokege

3.



Ke šomiša nomoro ya sephiri ya go ba le dinomoro le ditlhaka fela.

4.



Ke kitima ka morago ga sefatanaga seo se sepelago ka sa ka morago go ya go topa kgwele.

Maitshwaro a go bolokega

c.



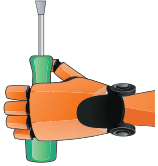
Ke otlela paesekela ya ka gomme ka šetša sephethephethe. Sellathekeng sa ka se ka potleng.

d.



Ke a ema ka hlokomela sephethephethe pele ke kgabaganya mmila. Sellathekeng sa ka se ka potleng.

Mošongwana wa 1



Dira lepokisana le thušo ya pele.



- I. Lebelela diswantšho. Bona ka dilo tšeo di swanetšego go ba ka lepokisaneng la thušo ya pele.

O tla hloka:

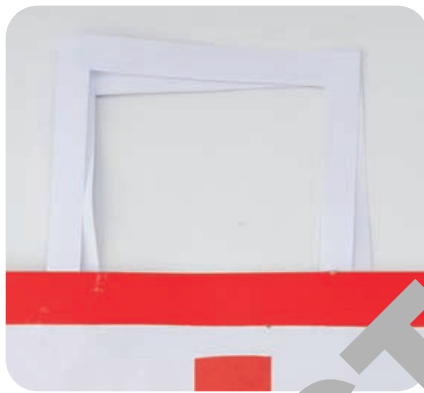
- Letlako le le lekhubedu la A4 la khatebote
- Karata ya A4 go thala dilo tšeo di tlogo go tšelwa ka gare ga lepokisana la gago la thušo ya pele: wulu ya leokodi, pantiši, setlolo, dihlwekišaditsebe, ditelafo, bj.bj.
- Sekero
- Rula ya 30 cm
- Phensele le dikherayone
- Dikhokhi
- Sekgomaretši

Mošongwana wa 1 (o tšwela pele)

Ditlhalošo tša tlhamo

- I. Lepokisana la thušo ya pele la pampiri ke bogolo bja pampišana ya A4, gape le na le dilo tše hlano tša thušo ya pele.

Ditaelo



- Mena pampišana ya A4 ka bogare. Ripa diswaro ka mabakoreng ka potledi gomme o e kgomaretše godimo ga letlakala.

Ripa leswaga la sefapano go letlakala le lešweu la pampiri gomme o le kgomaretše mabakoreng a ka pele le a ka morago a letlakala.



- Latišiša fela, khalara gomme o ripe dilo tše di tsenago ka lepokisaneng.
- Kgomaretša dilo ka gare letlakala le le phuthilwego.

Mošongwana wa 1 (o tšwela pele)

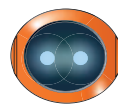
Setšweletšwa se se feditšwego.



Lekola lepokisana la gago la thušo ya pele. Thala sefahlego sa go sepelelela ka karabo ya gago.



Gabotse kudu



Gabotse



Go be go ka
ba kaone

Naa lepokisi la ka la thušo ya pele le tswalelega le go bulega bokaone ga kaakang?

Naa lepokisi la ka la thušo ya pele le dirilwe ka bokgwari bjo bo kaakang?

Naa ke kgabišitše le go feleletša lepokisana la ka la thušo ya pele ga botse go fihla kae?

Mošongwana wa 2






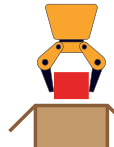
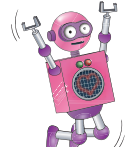
Khoutung ye, o tla topa dilo gomme wa tshela dingwe.

Mapheko ao a swanetšego go tshelwa ke ampule ya setimamollo.



Šomiša diploko tše tša khoutu:







				
Pele	Retologela ka go la nngela	Retologela ka go la go ja	Topa (swara)	Tshela ka godimo

Mošongwana wa 2 (o tšwela pele)

Khoutu ya I

1. Lebelela kriti.
Bala o be o
latele khoutu.
Thoma go
khutlotharo ye
talamorogo.



Pele, [pele, topa ], pele, [pele, retologela ka go
la go ja], tshela ka godimo [], [pele, retologela
ka go ja], [pele, topa ], [pele, retologela ka go
ja], [pele, topa ], [pele, retologela ka go la
ja], [pele, topa ].

Mošongwana wa 2 (o tšwela pele)



2. Bolela ka tše di latelago le mogwera wa gago:

- a. Naa khoutu e nepagetše?
- b. Naa o tabogile eng?
- c. Naa o eme kae?



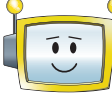


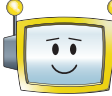
3. Ngwala khoutu.

4. Khutsufatša khoutu..

- a. Khutsufatša khoutu.
- b. Khutsufatša khoutu ye kopana o šemisidikonope tša go laetša pušeletšo.

6. Lekola khoutu gomme o e leke



Naa khoutu e na le diphošo?		
 Aowa, gomme nna e na le diphošo.	 Phošo ye tee goba tše pedi fela	 Ee, diphošo tša palo ya go bonala
Naa khoutu e rarolotše bothata?		
 Gabotse kudu	 Gabotse	 Go ka ba kaone

Mošongwana wa 2 (o tšwela pele)

Khoutu ya 2

1. Bala le go latela khoutu. Thoma.



[Pele, retologela ka go la go ja], pele, [pele, retologela ka go la ngele], pele, [retologela ka go la ngele, pele,, topa], [pele, retologela ka go la ngele], tshela ka go la ka la go ja, retologela ka go la ka la go ja, pele, [pele, topa], [pele, retologela ka go la ngele], pele, pele.

Mošongwana wa 2 (o tšwela pele)



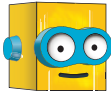


2. Bolela ka tše di latelago le mogwera wa gago:

- a. Naa o tabogile eng?
- b. Naa o eme kae?






3. Ngwala khoutu yeo wena le mogwera wa gago le e hlamilego..

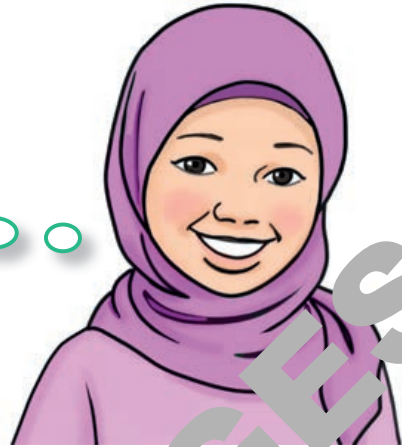
Morago ga go fetola khoutu, le kgonne go araba bothata?

 Ee, re kgonne!	 Re nyakile la thušo ye nnyane.	 Re nyakile thušo gore re bontšhwe pele.
---	--	--

O ikwa bjang ka Mošongwana wa wo o o dirilego?

1 	2 	3 	4 
Gonek!	Thabile!	Ikgantšha!	Yay!

Naa ke tseba bjang gore ke dijo dife tša phepo le tšeo de sego tša phepo?



O ka thuša Tumi go dira dikgetho tša dijo tša phepo

A re thomengng

Go na le dijo tša phepo le tšeo de sego tša phepo.

Lebelela diswantšho. Kgetha poleiti ya dijo tša phepo.

Hlahlamolla poleiti ka go dijo tša go fapana tšeo di dirago sejo.

Ngwana wa naneo la dijo tša go fapafapana tša sejo se o se tšethilego.



Hlahlamolla - go thuba ka go dikarolo tše nnyane.

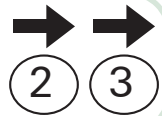
Mošongwana wa 1



1. Lebelelang kriti gomme le hlame khoutu ye e yago go dijo ka moka tša phepo.
2. Fanang dikhoutu le sehlopha se sengwe. Lekolang le latele khoutu ya bona.
3. Khutsofatšang khoutu ya lena le šomiša dikarata tša poeletšo.
4. Lekolang dikhoutu.



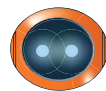
Maele: Dithoukene
tša pušeletšo



Naa khoutu tšona le diphošo?



Wawa, ga e na
diphošo!



Phošo ye tee goba
tše pedi fela



Ee, diphošo tša palo
ya go bonala

Naa khoutu e rarolotše bothata?



Gabotse kudu



Gabotse



Go ka ba kaone

Mošongwana wa 2

1. Lebelela kriti.
2. Hlama khoutu go tloga mathomong go fihla mafelelong. **Ge** o wela godimo ga ploko ye serolane, **Bjale** o swanetše go kgoboketša dijo tša phepo.
3. Ngwala le go tloga leka khoutu.
4. Khutsofotšwe khoutu.



Naa khoutu e na le diphošo?



Aowa, ga e na diphošo!



Phošo ye tee goba tše pedi fela



Ee, diphošo tša palo ya go bonala

Naa khoutu e rarolotše bothata?



Gabotse kudu



Gabotse







Go ka ba kaone

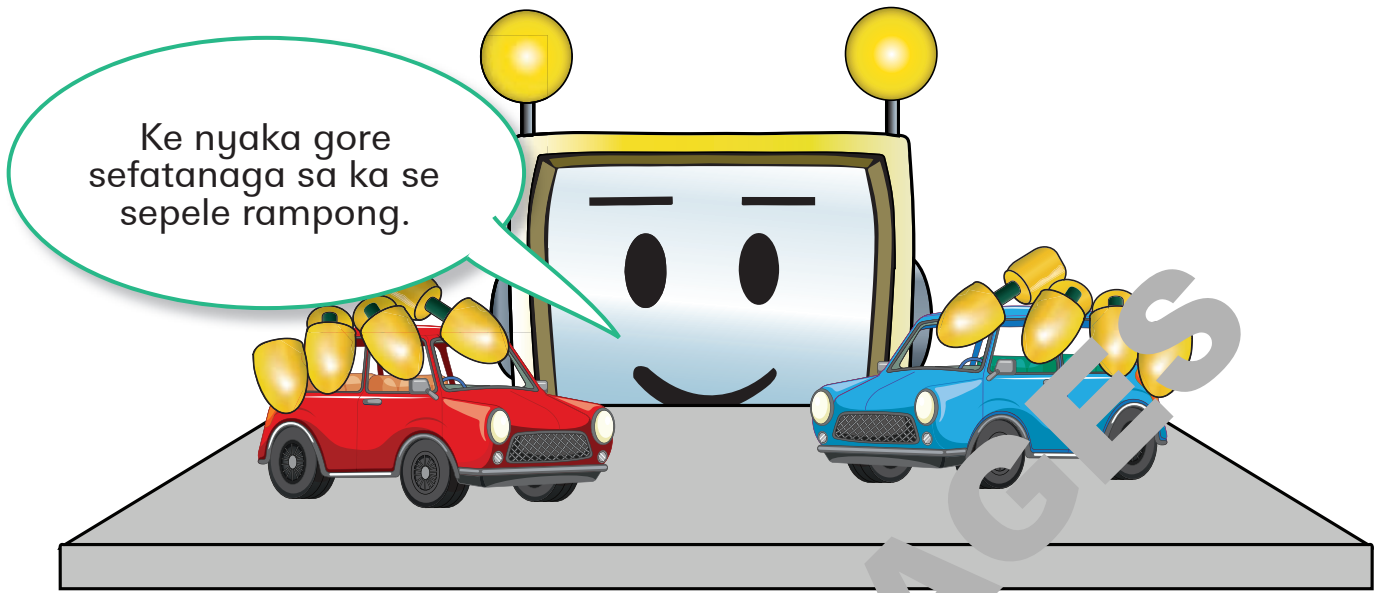
Mošongwana wa 2 (o tšwela pele)

5. Fana le bobedi bjo bongwe gomme o lekole khoutu ya bona.

EXTRACT PAGES

O ikwa bjani ka Mošongwana wo o o dirilego?

1 	2 	3 	4 
Go Leka!	Thabile!	Ikgantšha!	Yay!



Naa o kgona go aga sefatanaga o di tšha leswa didirišwa tšha kgale tšeo di swanetšego go lahlwa?

A re thomang

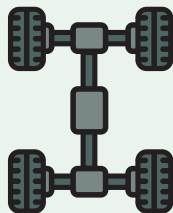
Pele o aka geta o swanetše go beakanyetša le go nyakišiša mabapi le tšeo seo o nyakago go se aga.

Naa o tšha eng ka ga sefatanaga? Sefatanaga se na le dikarolo tšha go tšapafapana.

Pele o ka hlama, o swanetše go beakanya le go hwetša tshedimošo ka ga selo se o nyaka go se aga.

O nyaka go tseba ka ga koloi? Koloi e na le dikarolo tše dintši.

1.



Motheo o thekga sefatanaga gomme wa swara le maotwana.

2.

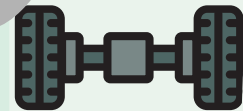


Mmele wa sefatanaga o rwala motledi e baneledi gomme wa buleleletša.

3.



Maotwana a dumelela sefatanaga go sepela.



Asele e swara maotwana.

Go aga sefatanaga o hloka didirišwa.

- Naa o be o ka šomiša eng bakeng sa mmele?
- Naa o be o ka šomiša eng bakeng sa maotwana?
- Naa maotwana a pele le a morago a be a tla swana?
- O be o ka šomiša eng bakeng sa asele?

Ke sefe sa didirišwa tše seo o bego o ka se diriša?

- Lebotlelo la polasetiki
- Mapokisi a mankgwari
- Therei ya pholisterine
- Lepokisi sa sesepe sa meno
- Sekhurumelo se segolo sa polasetiki
- Dikhurumelo tša papetla tša polasetiki
- Dikhurumelo tša mabotlelo tša polasetiki
- Dikhurumelo tša go fapafapana tša polasetiki
- Mathotswana a polasetiki go swara
- Dikotana tša go ntšha ditšhi
- Lepokisi la sesepe
- Kotana ya go hlaba



Mošongwana wa 1



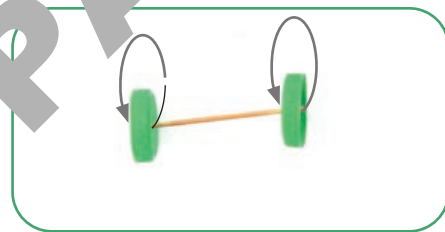
- O tla šomiša didirišwa dife sebakeng sa dikarolo tša go fapana tša mmele?

Lehlaka la polasetiki, patlana ya go ntšha ditšhila ka menong, Sekhurumelo sa polasetiki



O ka ba le asele ya go sepela.

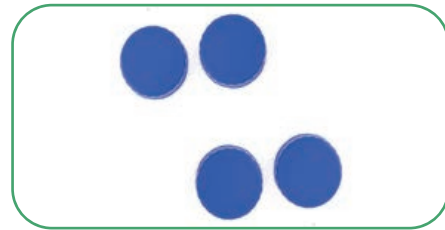
Asele ya go sepela e re tloga ka bonolo ka gare ga didirišwa tša go e swara. Maotwana ka moka a sepela ka tšhelelo. Mošongwana a kgomarediwa go dimo ga asele.



Dira teko ya go dikološa maotwana.



Kgetha mmele.



Koloi e tla ba le maoto a makae?

Sefatanaga – selo se se sepetšago batho go tloga lefelong le lengwe go ya gole lengwe.

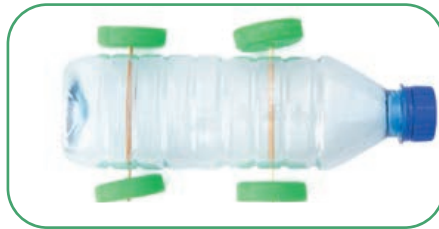
Alkorithime – sete ya ditaelo.

Dikarolo – diripa tše di fapanego tšeo di kopanago go aga selo.



Mošongwana wa 1 (o tšwela pele)

Mmele wa sefatanaga Swara sekhurumelo kgauswi le mmele. Bogare bja leotwana bo swanetše go ba kgauswi le bokafase, e sego fasefase, gore asele e lekane gabotse.

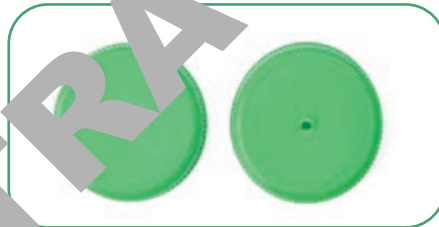


Lekola gore maotwana a tla ba le bogolo bja sepelelana le mmele.



Phula mašoba mmeleng fao asele e tlogo lokelwa gona.

- O tla phula mašoba bjang maotwaneng



- Ke mang a tla agago dikarolo tša go fapana?
- Naa sehlopha se tla kopanya sefatanaga bjang?
- Ngwala dikgato ka moka (alkoritheme) tša go aga sefatanaga sa gago.
- Balelang sehlopha se sengwe dikgato tša lena. Naa tatelano ya ditaelo e nepagetše?






Write




Mošongwana wa 1 (o tšwela pele)



7. Aga sefatanaga.


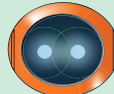

		
Ka dinako ka moka	Nakong e ntši	Go ka ba kaone
Naa sehlopha se latela dipeakanyetšo tšeo di dirilwego ka aga sefatanaga?		
Naa le bolela ka diphetogo tšeo di ka hlokago go tšwa le go tšea dipheho le le sehlopha?		
Naa sehlopha se šoma ka polokeo ya didirišwa?		
E ka ba le netefatša gore le hlwekisa efelo la lena la go šomela?		
Naa sehlopha se abelane ka didirišwa le didirišwa ka katlego?		
Naa sehlopha se šomisa didirišwa ka bohlale ntle le go senya?		

8. Leka sefatanaga.





		
Gabotse kudu	Gabotse	Go ka ba kaone
Naa maotwana a dikologile gabotse bjang?		
Naa sefatanaga se feleleditšwe ka bothakga bjang?		
Naa sefatanaga se sepetše ka go otloga bjang ge se theoga rempo?		

Mošongwana wa 1 (o tšwela pele)

9. Naa le šomile bjang bjalo ka sehlopha?

		
Ka dinako ka moka	Nakong e ntši	Go ka b...aone
Naa ke dirile karolo ya ka ya Mošongwana?		
Naa ke kgonne go theeletša ba bangwe?		
Naa ba bangwe ba kgonne go ntheeletša?		
Naa ke dirile mešomo ka moka... ke lego e ke swanetše go e dira?		

O ikwa bjang ka Mošongwana... wo o o dirilego?

1 	2 	3 	4 
C...Leka!	Thabile!	Ikgantšha!	Yay!